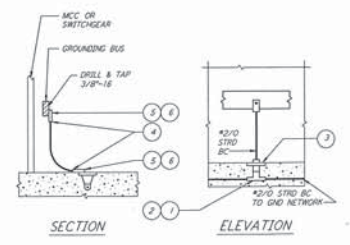


LIST OF MATERIAL

ITEM NO.	QTY	DESCRIPTION
1	1	SETUP POST, #2-#2/D WIRE, BURNDY K32C
2	1	CONNECTOR, TWO #4-#2/D WIRE FLAT BAR, BURNDY TYPE GCNDE (LONGER BOLT AS REQD)

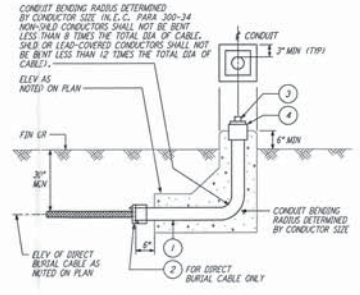
MOTOR GROUNDING (1) REF
 N.T.S.



LIST OF MATERIAL

ITEM NO.	QTY	DESCRIPTION
1	1	BAR, MILD HORIZONTAL TEE, #4/D-#4/D WIRE
2	1	CARTRIDGE, STANDARD PINDER 1SD GRAM
3	1	FLUSH PLATE, #4/D WIRE SIZE, 3/8\"/>
4	2	WAS, #1/D-#2/D WIRE x 3/8\"/>
5	2	SILICONE-BRONZE BOLT, 3/8\"/>
6	2	SILICONE-BRONZE LOCKWASHER SPRING 3/8\"/>

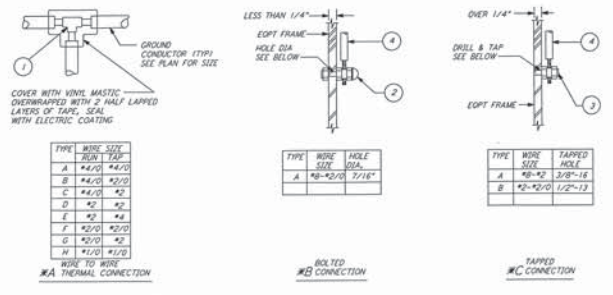
SWITCHGEAR OR CONTROL PANEL GROUNDING (2) REF
 N.T.S.



LIST OF MATERIAL

ITEM NO.	QTY	DESCRIPTION
1	1	BAR, CONDUIT, RIGID GALVANIZED STEEL, SIZE PER PLAN
2	1	CONDUIT BUSHING, NON-INSULATED GALV, PER CONDUIT SIZE
3	1	PLUG, SO HD RIGID ALUM, PER CONDUIT SIZE
4	1	CONDUIT COUPLING, RIGID GALVANIZED STEEL, PER CONDUIT SIZE

CONDUIT STUB-UP (3) REF
 N.T.S.



WIRE TO WIRE

TYPE	WIRE SIZE	ANGLE	TAP
A	#4/D	#4/D	#4/D
B	#4/D	#2/D	#2/D
C	#4/D	#2	#2
D	#2	#2	#2
E	#2	#4	#4
F	#2/D	#2/D	#2/D
G	#2/D	#2	#2
H	#1/D	#1/D	#1/D

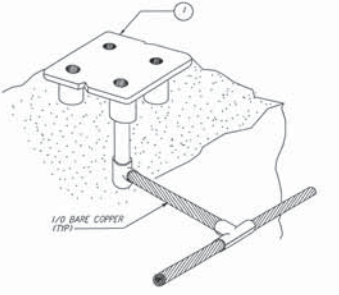
WIRE TO WIRE

TYPE	WIRE SIZE	ANGLE	TAPPED HOLE
A	#8-#2/D	7/16"	3/8"-16
B	#8-#2/D	1/2"-13	1/2"-13

LIST OF MATERIAL

ITEM NO.	QTY	DESCRIPTION
1	1	THERMAL WELD, GROUND, SIZE AS REQUIRED
2	1	GROUND CONNECTOR, CABLE TO BAR, SIZE AS REQUIRED
3	1	GROUND POST, SIZE AS REQUIRED
4	1	TYPE TFM INSULATED GREEN GROUND WIRE (UNLESS OTHERWISE NOTED)

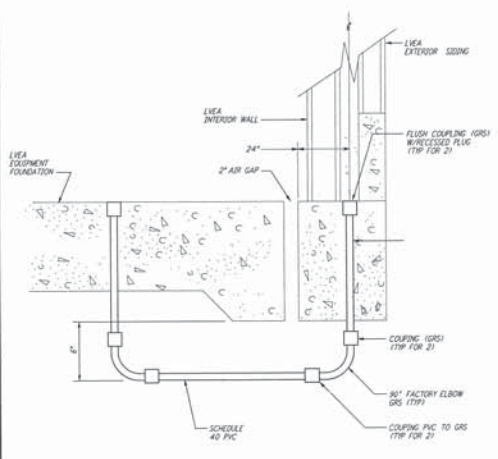
GROUNDING CONNECTIONS (4) REF
 N.T.S.



LIST OF MATERIAL

ITEM NO.	QTY	DESCRIPTION
1	1	GROUND PLATE, FLUSH, CADWELD #B16420

FLUSH FLOOR GROUND PLATE (5) REF
 N.T.S.



LVEA CONDUIT FLOOR RISER (6) REF
 N.T.S.

NO.	DATE	BY	CHKD	ENGR	PROJ	DESCRIPTION

PARSONS
 100 WEST WALNUT STREET
 PASADENA, CALIFORNIA

LIGO
 CALIFORNIA INSTITUTE OF TECHNOLOGY
 MASSACHUSETTS INSTITUTE OF TECHNOLOGY

LASER INTERFEROMETER
 GRAVITATIONAL-WAVE OBSERVATORY
 BTE SITWORK & FABRICATION - HANFORD, WA

ELECTRICAL
 GROUNDING DETAILS
 SHEET 1

NONE PP150969 8094
BT-E-603

This document and the design it carries are the property of PARSONS. They are loaned only with the borrower's expressed written agreement that they will not be reproduced, copied, loaned, exhibited, or used in any other way, except by written consent from PARSONS to the borrower.

This document and the design it carries are the property of PARSONS. They are loaned only with the borrower's expressed written agreement that they will not be reproduced, copied, loaned, exhibited, or used in any other way, except by written consent from PARSONS to the borrower.

JTB: 3/7/96

1: 04/19/96 2: 04/19/96 3: 04/19/96 4: 04/19/96 5: 04/19/96 6: 04/19/96