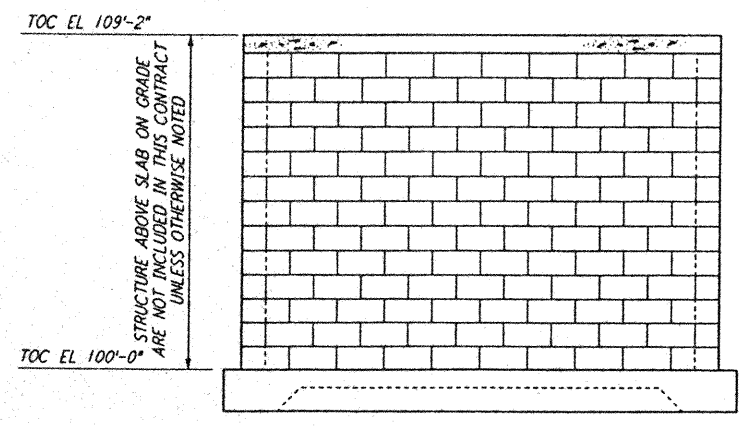
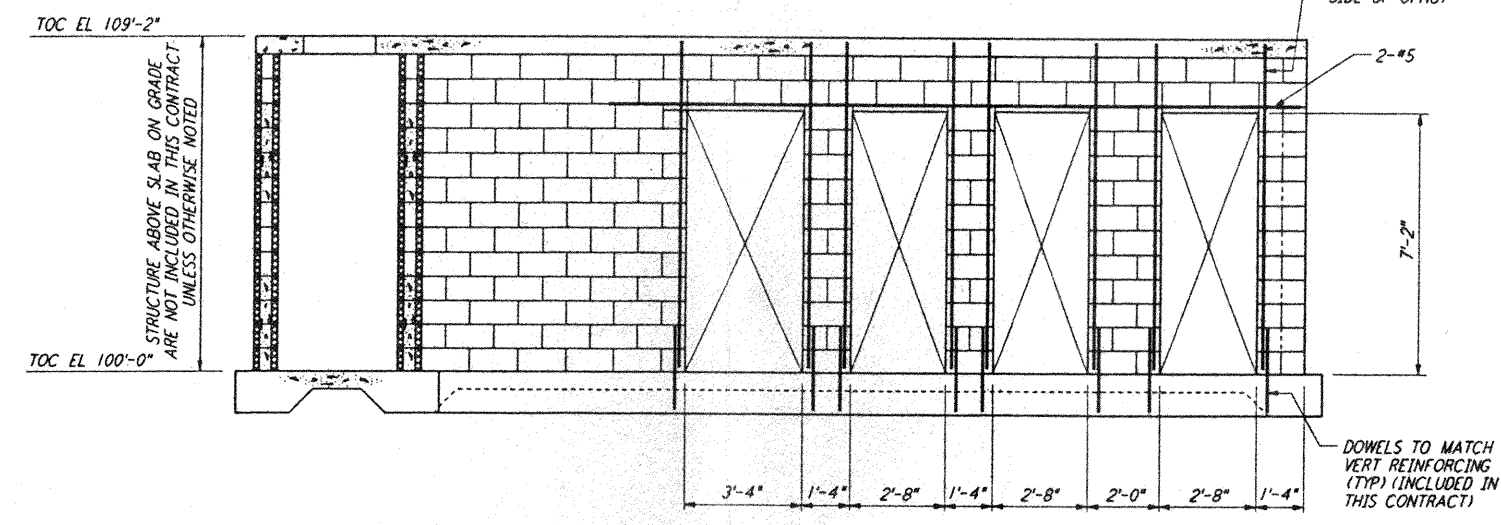


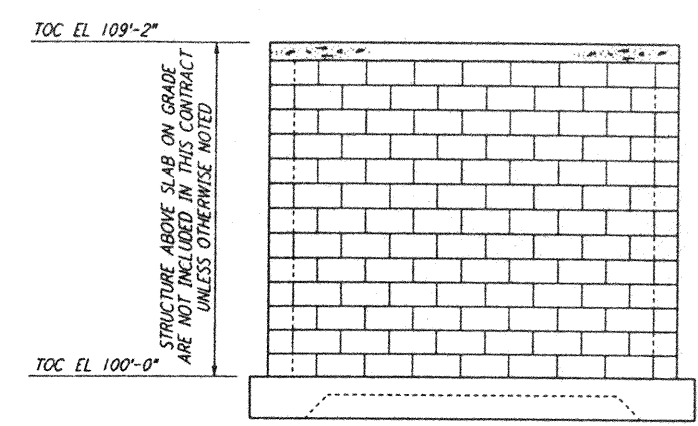
This document and the design it covers are the property of PARSONS. They are loaned only with the borrower's expressed written agreement that they will not be reproduced, copied, loaned, exhibited, or used in any other way, except by written consent from PARSONS to the borrower.



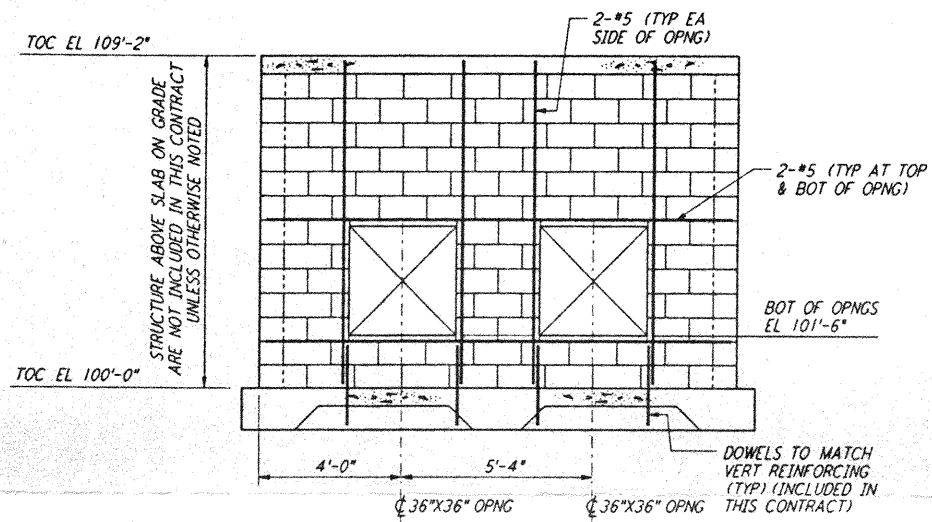
ELEVATION A REF
 BT-S-606 BT-S-605
 1/8" = 1'-0"



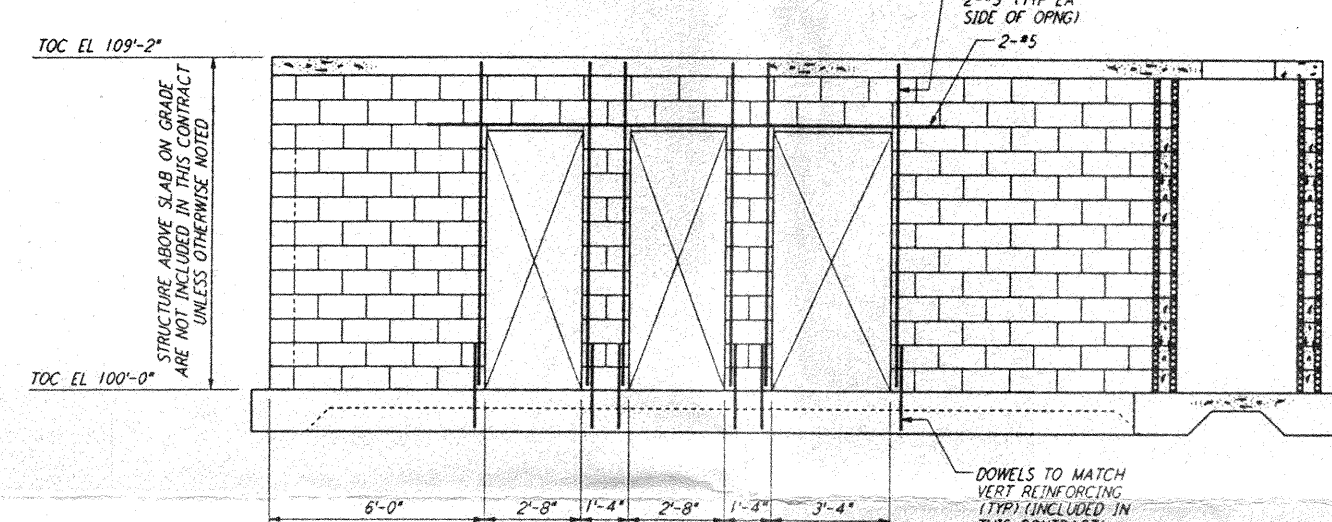
ELEVATION B REF
 BT-S-606 BT-S-605
 1/8" = 1'-0"



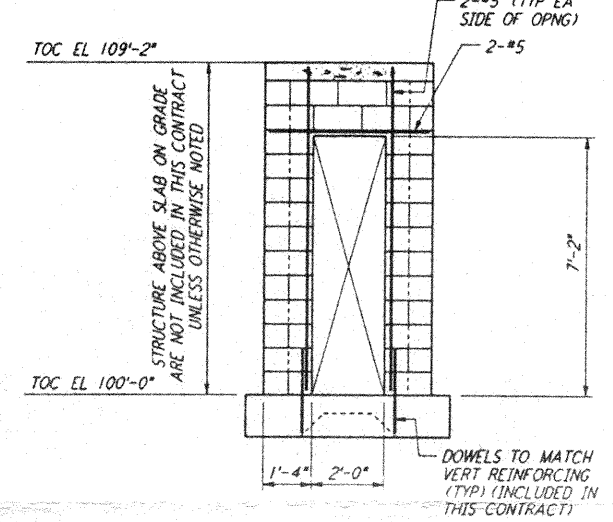
ELEVATION C REF
 BT-S-606 BT-S-605
 1/8" = 1'-0"



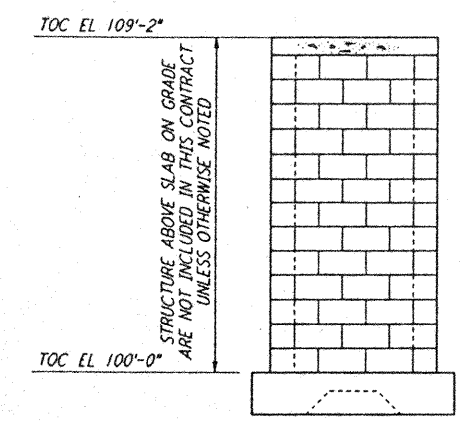
ELEVATION D REF
 BT-S-606 BT-S-605
 1/8" = 1'-0"



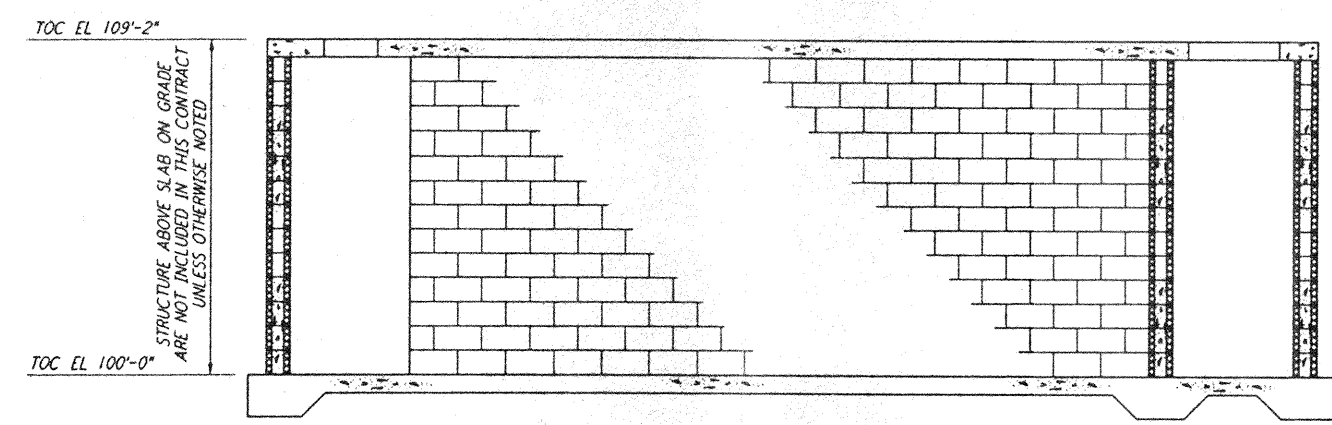
ELEVATION E REF
 BT-S-606 BT-S-605
 1/8" = 1'-0"



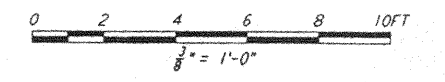
ELEVATION F REF
 BT-S-606 BT-S-605
 1/8" = 1'-0"



ELEVATION G REF
 BT-S-606 BT-S-605
 1/8" = 1'-0"



ELEVATION H REF
 BT-S-606 BT-S-605
 1/8" = 1'-0"



NO.	DATE	BY	CHKD	ENGR	PROJ	DESCRIPTION
A	4-19-96	MCS	KS	JP	BT-S-606	CHANGE ORDER #4

DRAWN	MCS
CHECKED	
ENGINEER	
PROJ	

PARSONS
 100 WEST WALNUT STREET
 PASADENA, CALIFORNIA

LIGO
 CALIFORNIA INSTITUTE OF TECHNOLOGY
 MASSACHUSETTS INSTITUTE OF TECHNOLOGY

LASER INTERFEROMETER
 GRAVITATIONAL-WAVE OBSERVATORY
 BTE SITWORK & FABRICATION - HANFORD, WA

TITLE	STRUCTURAL MID & END STATIONS "B" AIR HANDLING UNIT ENCLOSURE ELEVS & SECTS	SCALE	AS NOTED	CONTRACT NUMBER	PPI 50969	PROJECT NUMBER	8094
BT-S-606		LIGO-0960740-110					