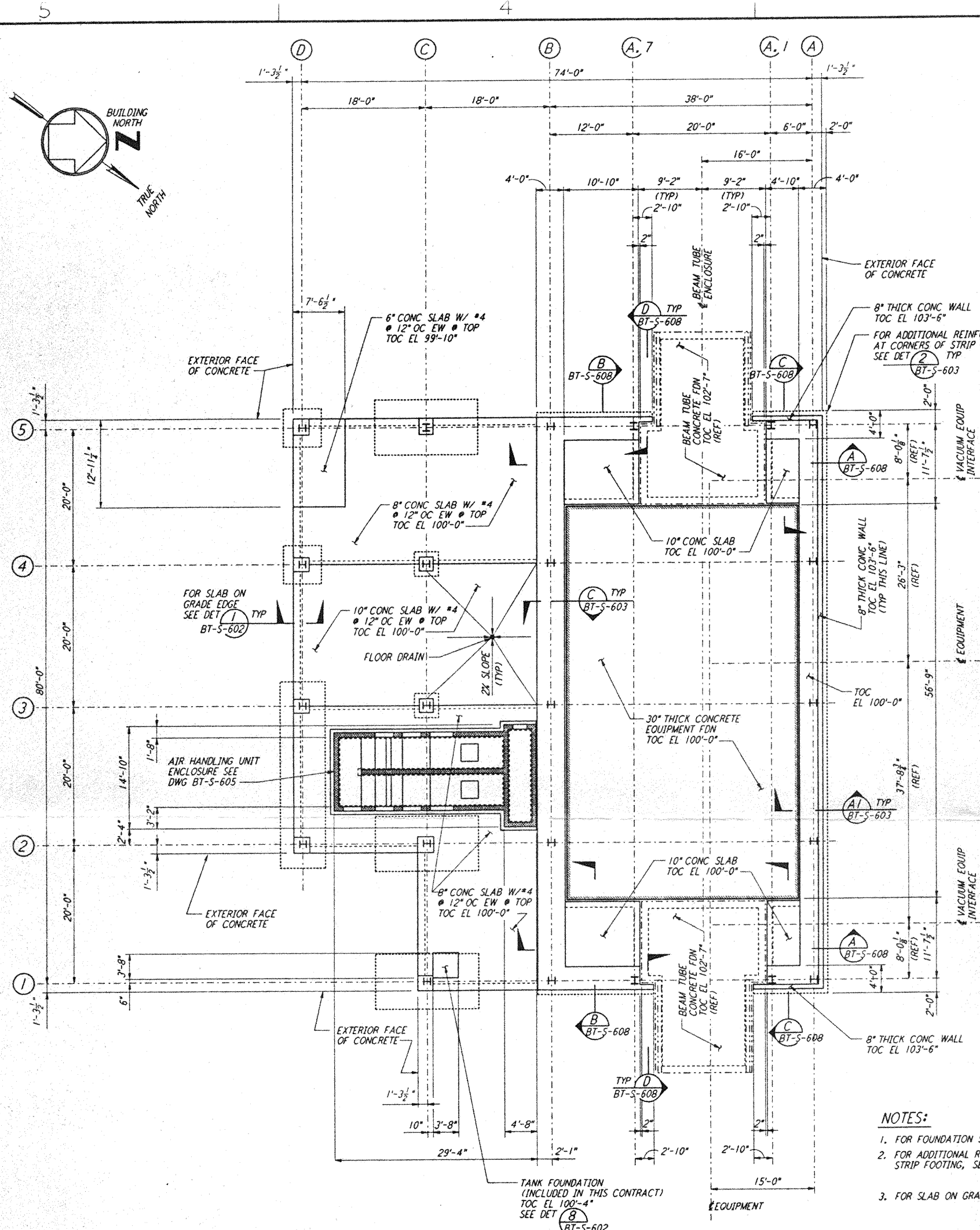


THIS DOCUMENT AND THE DESIGN IT REPRESENTS ARE THE PROPERTY OF PARSONS. They are loaned only with the written consent from PARSONS to the borrower. No other party, without the written consent of PARSONS, shall reproduce or use the design or information contained herein for any purpose other than that for which they were originally prepared. Borrower's expressed written agreement that they will not use, copy, manufacture, reproduce, transmit, disseminate, or make any other party aware of the design or information contained herein without the written consent of PARSONS.

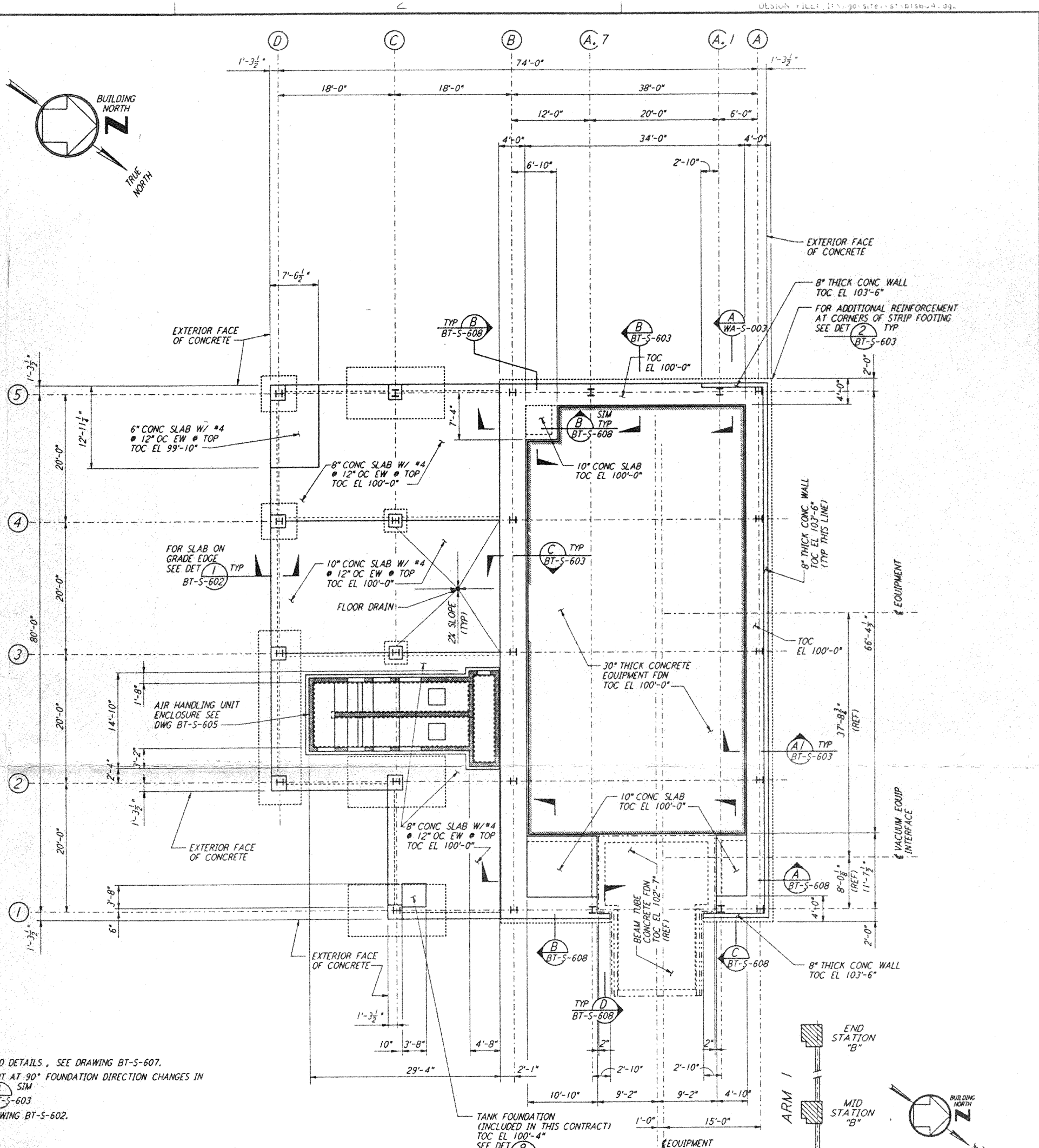


ARM 1 (SOUTHWEST ARM)
MID STATION "B" FOUNDATION PLAN

1/8" = 1'-0"
DATUM POINT EL 100'-0" = EL 532.22'

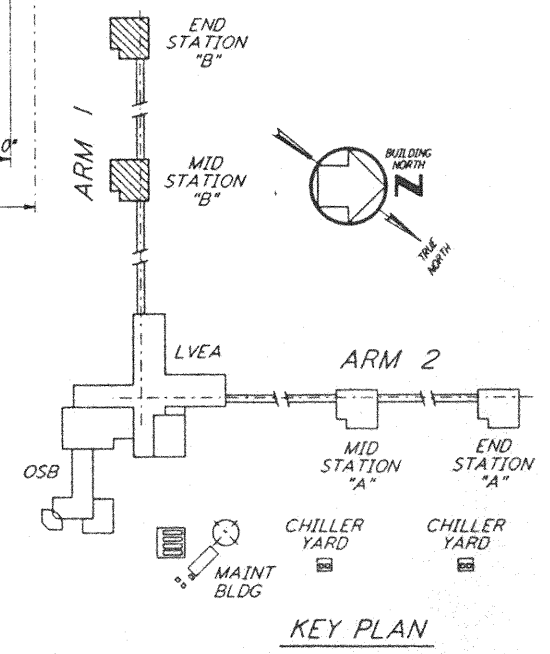
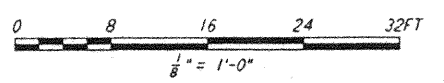
- NOTES:**
1. FOR FOUNDATION SCHEDULE AND DETAILS, SEE DRAWING BT-S-607.
 2. FOR ADDITIONAL REINFORCEMENT AT 90° FOUNDATION DIRECTION CHANGES IN STRIP FOOTING, SEE DETAIL (4) BT-S-603.
 3. FOR SLAB ON GRADE, SEE DRAWING BT-S-602.

- EQUIPMENT FOUNDATION NOTES:**
1. CONCRETE FOR EQUIPMENT FOUNDATION SHALL BE PLACED IN MULTIPLE LIFTS OF ONE (1) FOOT OR MORE WITH A FINAL LIFT OF SIX (6) INCHES.
 2. FIBERMESH FIBERS (MANUFACTURED BY FIBERMESH, CHATTANOOGA, TENNESSEE OR EQUAL) SHALL BE MIXED WITH CONCRETE FOR THE FINAL LIFT OF SIX (6) INCHES FOR THE EQUIPMENT FOUNDATION.
 3. CONCRETE SURFACE SHALL BE CLEANED, RAKED AND ROUGHENED TO DEVELOPE BOND BETWEEN CONCRETE LAYERS.
 4. TOP REINFORCEMENT OF EQUIPMENT FOUNDATION SHALL HAVE 1 1/2" CLEAR COVER. CONTRACTOR SHALL TAKE ALL THE NECESSARY PRECAUTIONS TO MAINTAIN UNIFORM COVER.
 5. CONTRACTOR SHALL HAVE SPARE PUMPS TO ENSURE UNINTERRUPTED PLACEMENT OF CONCRETE.
 6. EQUIPMENT FOUNDATION SHALL BE CURED BY MEMBRANE CURING METHOD AS PER SPECIFICATIONS.



ARM 1 (SOUTHWEST ARM)
END STATION "B" FOUNDATION PLAN

1/8" = 1'-0"
DATUM POINT EL 100'-0" = EL 535.26'



NO.	DATE	BY	CHKD	ENGR	PROJ	DESCRIPTION
A	4-19-96	MCS	KS	BP	MWJ	CHANGE ORDER #4

DRAWN	MCS
CHECKED	
ENGINEER	
PROJ	

PARSONS
100 WEST WALNUT STREET
PASADENA, CALIFORNIA

LIGO
CALIFORNIA INSTITUTE OF TECHNOLOGY
MASSACHUSETTS INSTITUTE OF TECHNOLOGY

LASER INTERFEROMETER
GRAVITATIONAL-WAVE OBSERVATORY
BTE SITESWORK & FABRICATION - HANFORD, WA

TITLE: STRUCTURAL
MID STATION "B" &
END STATION "B"
FOUNDATION PLANS

AS NOTED PPI50969 8094
SHEET NUMBER: BT-S-604
LIGO-0960738-A-D