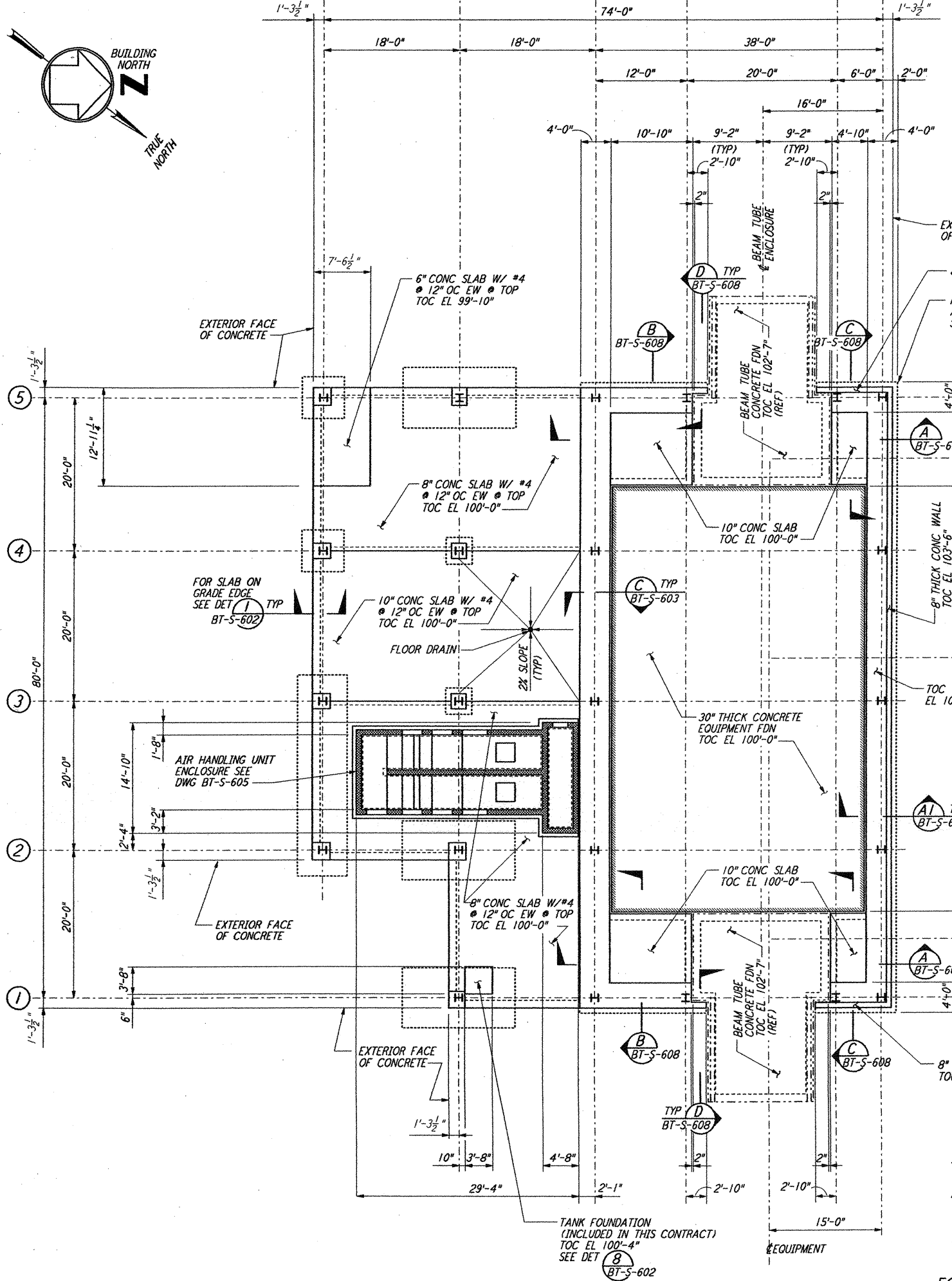


5 4 3 2 1  
 D C B A.7 A.1 A



ARM 1 (SOUTHWEST ARM)  
 MID STATION "B" FOUNDATION PLAN

1/8" = 1'-0"  
 DATUM POINT EL 100'-0" = EL 532.22'

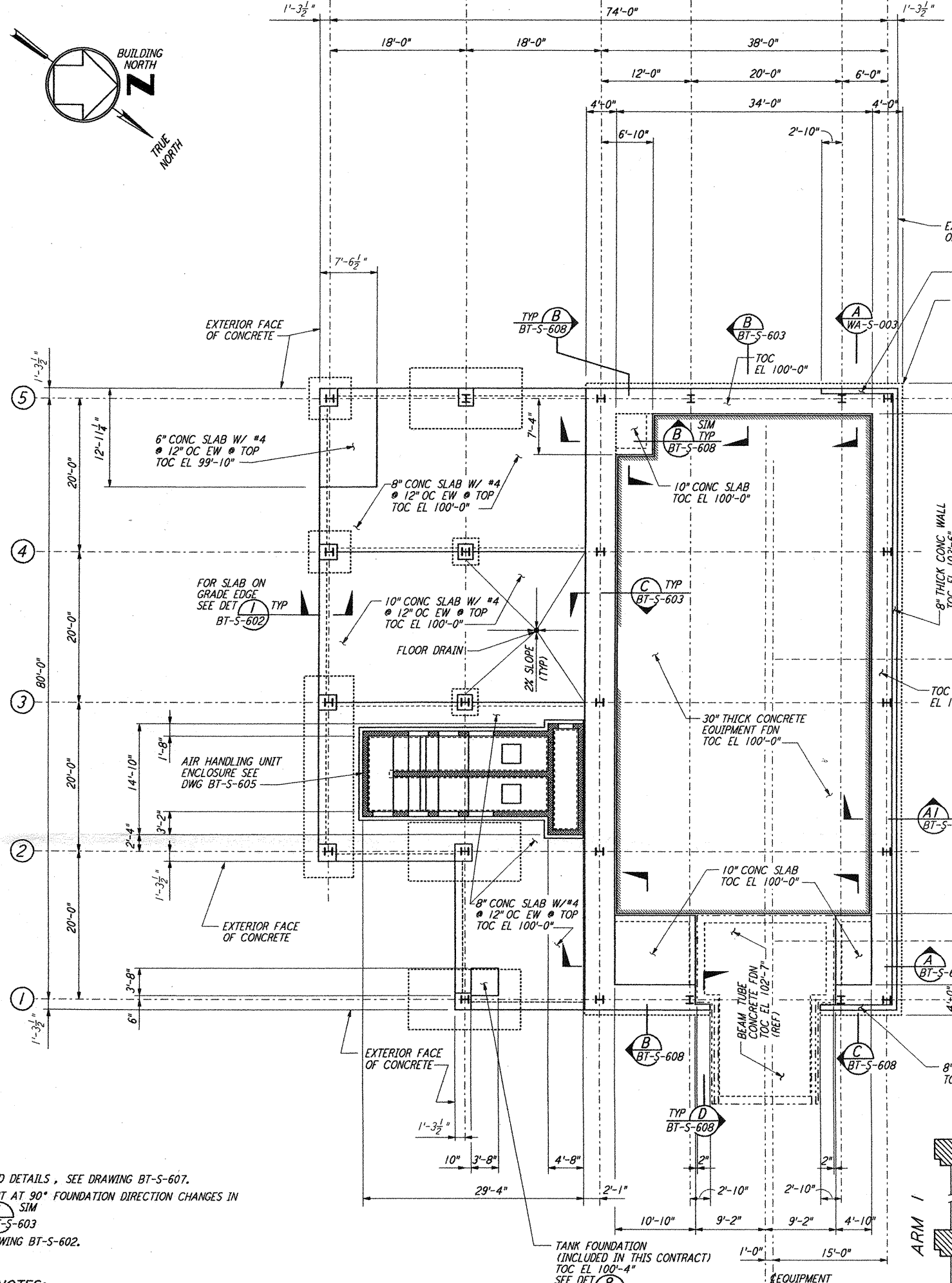
**NOTES:**

1. FOR FOUNDATION SCHEDULE AND DETAILS, SEE DRAWING BT-S-607.
2. FOR ADDITIONAL REINFORCEMENT AT 90° FOUNDATION DIRECTION CHANGES IN STRIP FOOTING, SEE DETAIL (A) SIM BT-S-603
3. FOR SLAB ON GRADE, SEE DRAWING BT-S-602.

**EQUIPMENT FOUNDATION NOTES:**

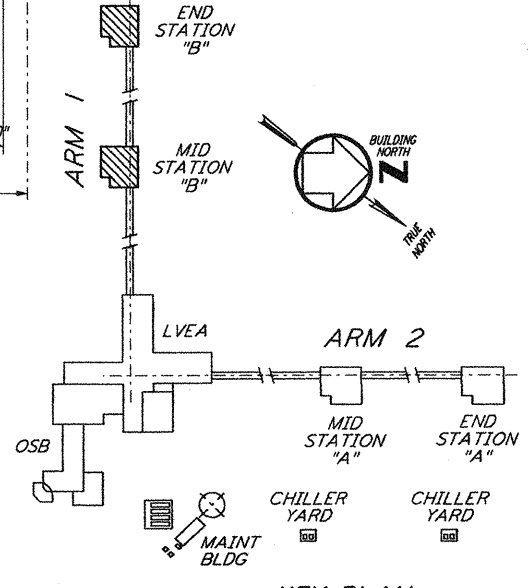
1. CONCRETE FOR EQUIPMENT FOUNDATION SHALL BE PLACED IN MULTIPLE LIFTS OF ONE (1) FOOT OR MORE WITH A FINAL LIFT OF SIX (6) INCHES.
2. FIBERMESH FIBERS (MANUFACTURED BY FIBERMESH, CHATTANOOGA, TENNESSEE OR EQUAL) SHALL BE MIXED WITH CONCRETE FOR THE FINAL LIFT OF SIX (6) INCHES FOR THE EQUIPMENT FOUNDATION.
3. CONCRETE SURFACE SHALL BE CLEANED, RAKED AND ROUGHENED TO DEVELOPE BOND BETWEEN CONCRETE LAYERS.
4. TOP REINFORCEMENT OF EQUIPMENT FOUNDATION SHALL HAVE 1 1/2" CLEAR COVER. CONTRACTOR SHALL TAKE ALL THE NECESSARY PRECAUTIONS TO MAINTAIN UNIFORM COVER.
5. CONTRACTOR SHALL HAVE SPARE PUMPS TO ENSURE UNINTERRUPTED PLACEMENT OF CONCRETE.
6. EQUIPMENT FOUNDATION SHALL BE CURED BY MEMBRANE CURING METHOD AS PER SPECIFICATIONS.

5 4 3 2 1  
 D C B A.7 A.1 A



ARM 1 (SOUTHWEST ARM)  
 END STATION "B" FOUNDATION PLAN

1/8" = 1'-0"  
 DATUM POINT EL 100'-0" = EL 535.26'



LIGO-D960738-00-0 KEY PLAN

NO.	DATE	BY	CHKD	ENGR	PROJ	DESCRIPTION
0	1-22-99	MEI	--	--	MOW	ISSUED FOR AS BUILT
A	4-19-96	MCS	KS	BP		CHANGE ORDER #4

AS-BUILT DRAWINGS

**PARSONS**  
 100 WEST WALNUT STREET  
 PASADENA, CALIFORNIA

**LIGO**  
 CALIFORNIA INSTITUTE OF TECHNOLOGY  
 MASSACHUSETTS INSTITUTE OF TECHNOLOGY

LASER INTERFEROMETER GRAVITATIONAL-WAVE OBSERVATORY BTE SITING & FABRICATION - HANFORD, WA	
TITLE	STRUCTURAL MID STATION "B" & END STATION "B" FOUNDATION PLANS
SCALE	AS NOTED
CONTRACT NUMBER	PP150969
PROJECT NUMBER	8094
SHEET NUMBER	BT-S-604