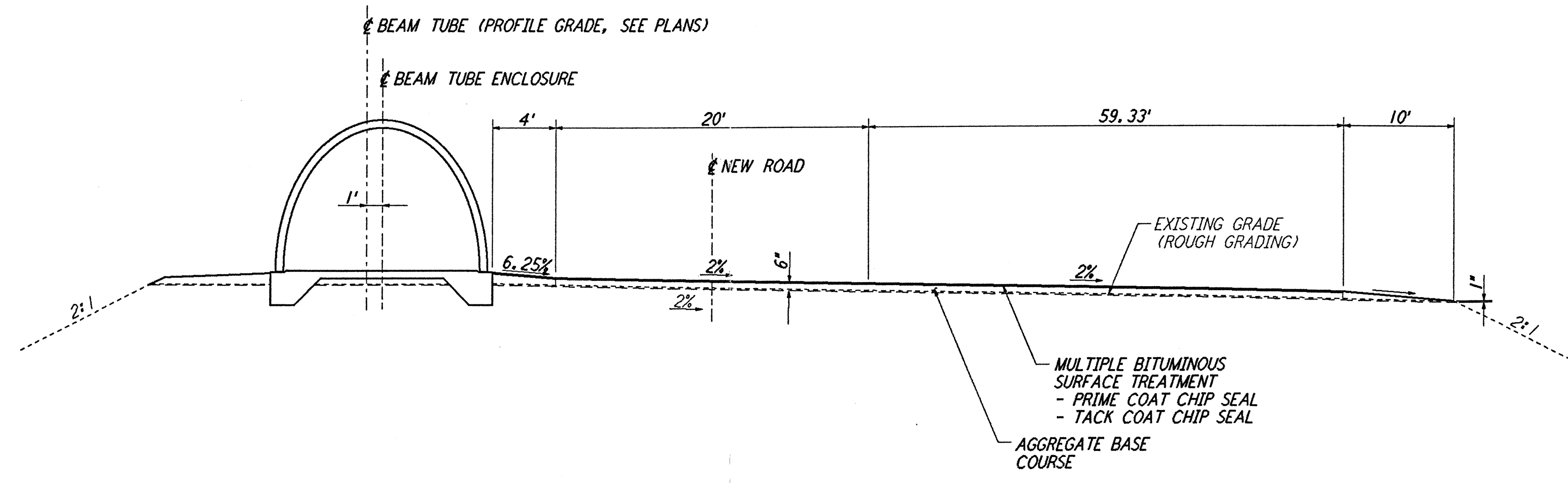
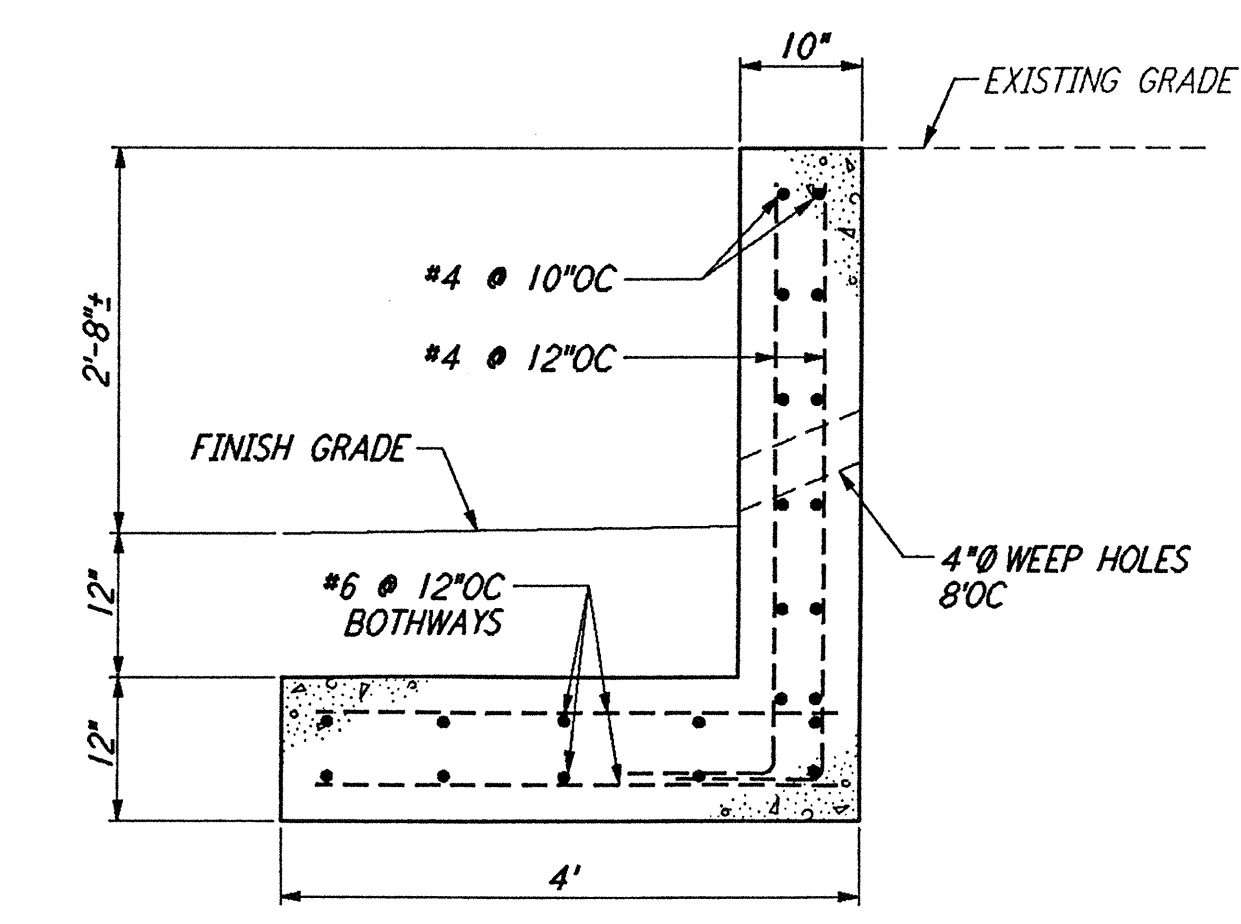


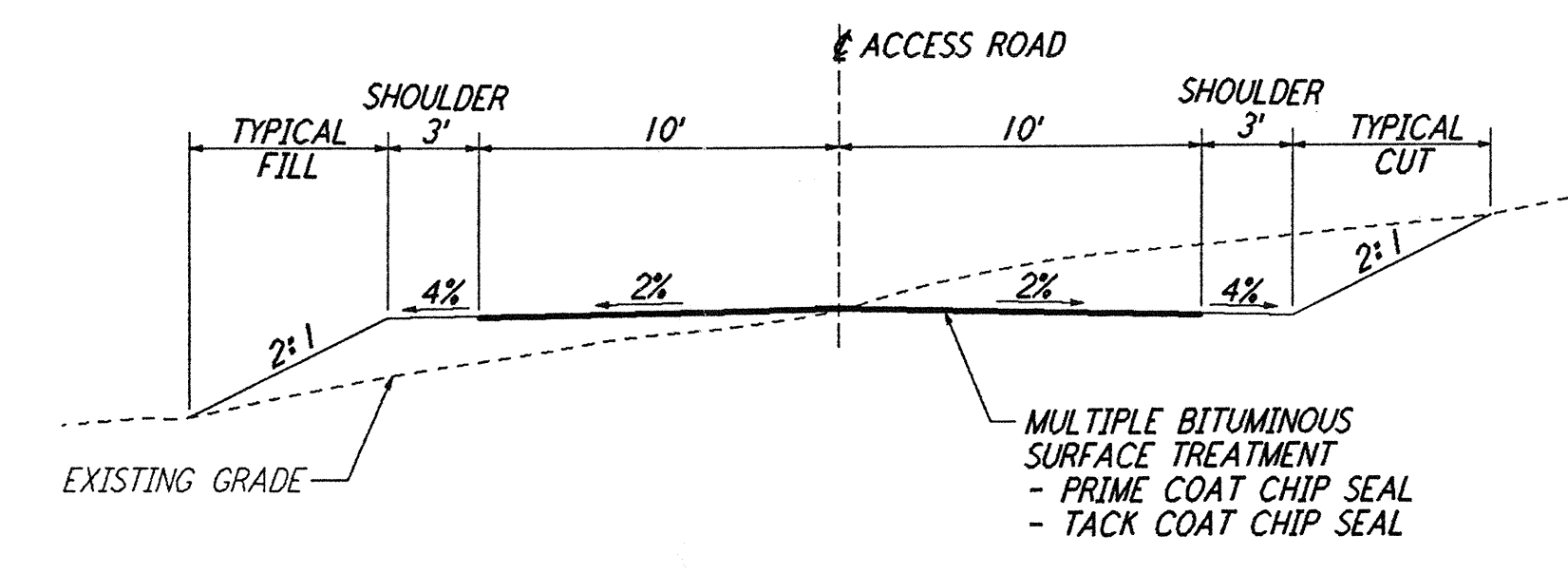
**NOTES:**  
 1. SEE SHEET BT-C-002 FOR GENERAL NOTES, LEGEND AND ABBREVIATIONS.



**SECTION A**  
 NOT TO SCALE  
 REF: BT-C-013, BT-C-017, BT-C-018, BT-C-033, BT-C-037, BT-C-038  
 (TURNAROUNDS ALONG NORTHWEST AND SOUTHWEST ARMS)



**RETAINING WALL 1**  
 NOT TO SCALE  
 REF: BT-C-052, BT-C-046



**ACCESS ROAD B**  
 NOT TO SCALE  
 REF: BT-C-021/022, BT-C-025/026, BT-C-041/042, BT-C-045/046  
 (ACCESS ROAD FROM MID/END STATION TO CHILLER YARD PAD)

not be reproduced, copied, loaned, exhibited, or used in any other way, except by written consent from PARSONS to the borrower.

This document and the design it covers are the property of PARSONS. They are loaned only with the borrower's expressed written agreement that they will

NO.	DATE	BY	CHKD	ENGR	PROJ	DESCRIPTION
A	4-19-96	WRB	TJM	TJM		CHANGE ORDER NO. 4

DRAWN	WRB
CHECKED	
ENGINEER	
PROJ	

**PARSONS**  
 100 WEST WALNUT STREET  
 PASADENA, CALIFORNIA

**LIGO**  
 CALIFORNIA INSTITUTE OF TECHNOLOGY  
 MASSACHUSETTS INSTITUTE OF TECHNOLOGY

LASER INTERFEROMETER  
 GRAVITATIONAL-WAVE OBSERVATORY  
 BTE SITWORK & FABRICATION - HANFORD, WA

CIVIL  
 GRADING SECTIONS  
 & DETAILS

SCALE: AS NOTED  
 CONTRACT NUMBER: PPI50969  
 PROJECT NUMBER: 8094

SHEET NUMBER: **BT-C-052**