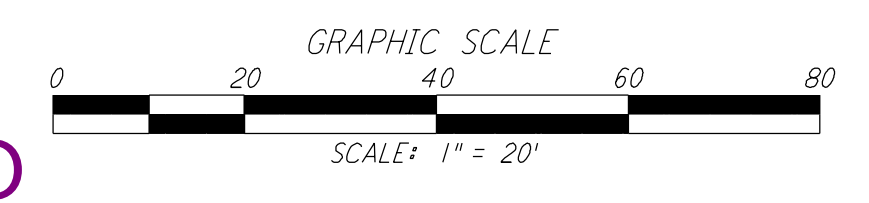
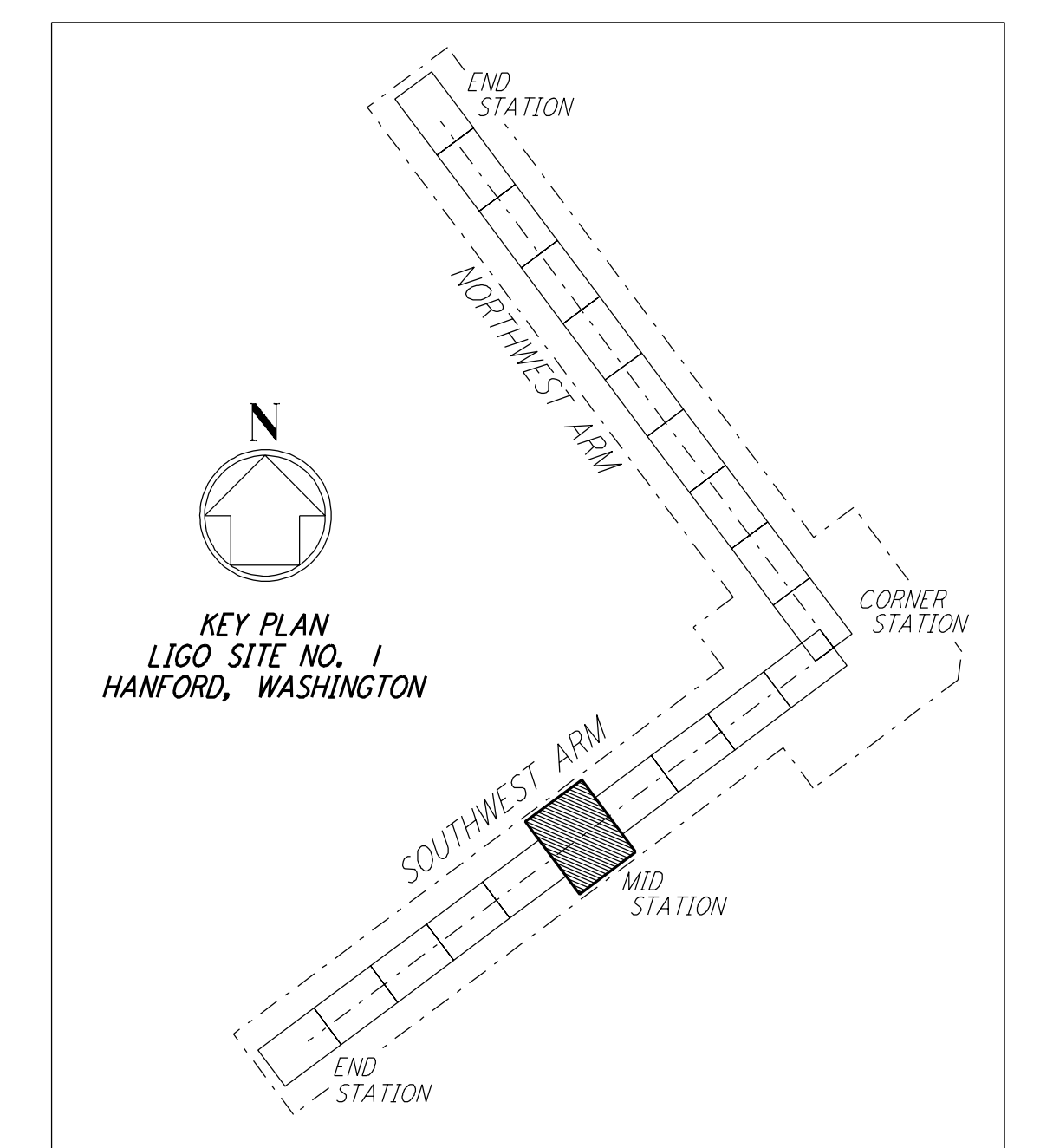
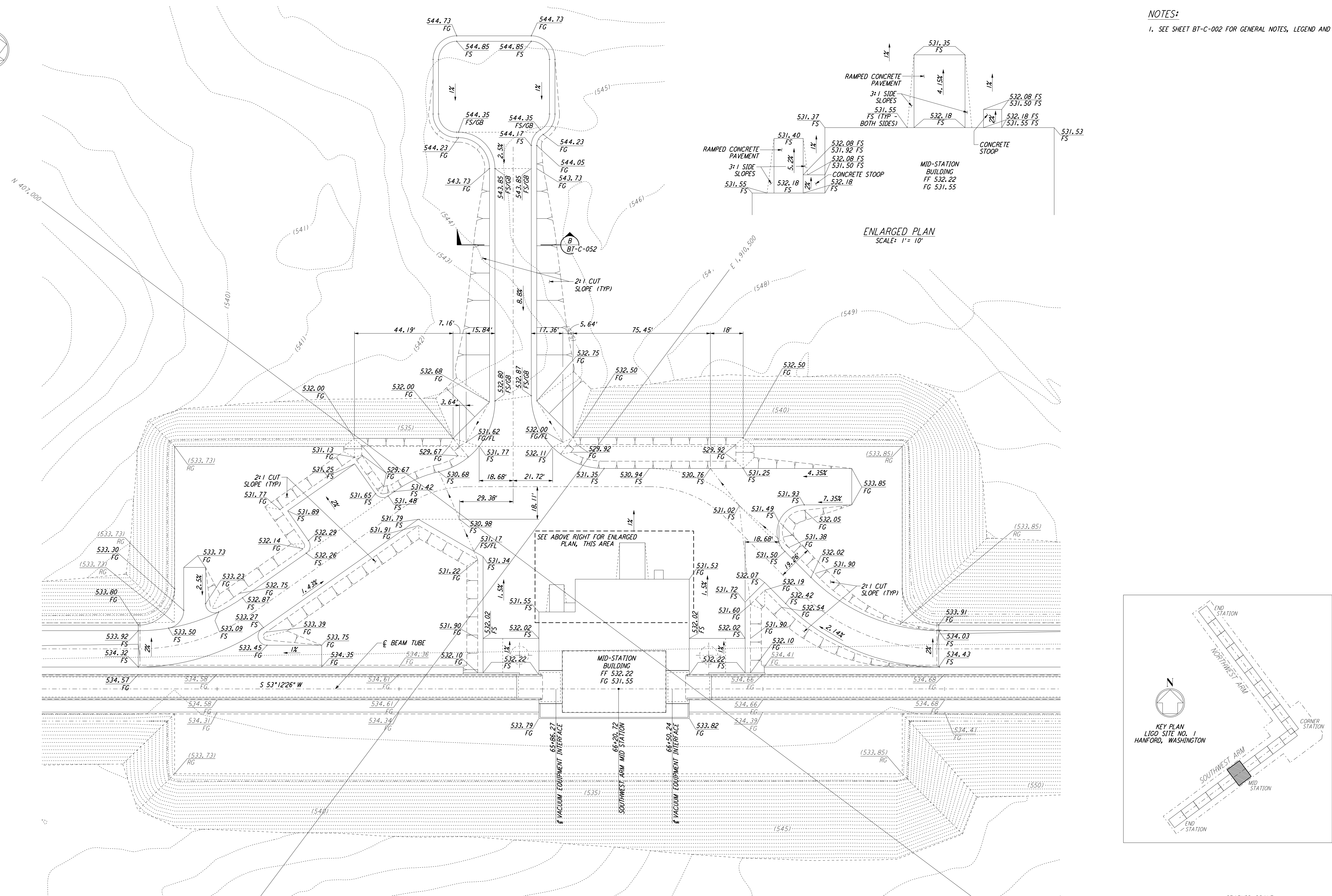
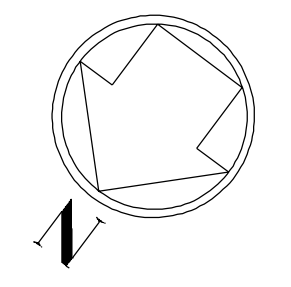


**NOTES:**  
 1. SEE SHEET BT-C-002 FOR GENERAL NOTES, LEGEND AND ABBREVIATIONS.

This document and the design it covers are the property of PARSONS. They are loaned only with the borrower's expressed written agreement that they will not be reproduced, copied, loaned, exhibited, or used in any other way, except by written consent from PARSONS to the borrower.



LIGO-D960728-A-O

REFERENCES		REVISIONS		DRAWN		CHECKED		ENGINEER		PROJ	
NO.	DATE	BY	CHKD	ENGR	PROJ	NO.	DATE	BY	CHKD	ENGR	PROJ
A	4-19-96	WRB									
CHANGE ORDER NO. 4											
DESCRIPTION											

DRWN	WRB
CHEK	
ENGR	
PROJ	

**PARSONS**  
 100 WEST WALNUT STREET  
 PASADENA, CALIFORNIA

**LIGO**  
 CALIFORNIA INSTITUTE OF TECHNOLOGY  
 MASSACHUSETTS INSTITUTE OF TECHNOLOGY

LASER INTERFEROMETER GRAVITATIONAL-WAVE OBSERVATORY BTE SITESWORK & FABRICATION - HANFORD, WA			
TITLE	SCALE	CONTRACT NUMBER	PROJECT NUMBER
CIVIL SOUTHWEST ARM MID-STATION GRADING PLAN	1" = 20'	PP150969	8094
SHEET NUMBER	REVISIONS		
<b>BT - C - 042</b>			