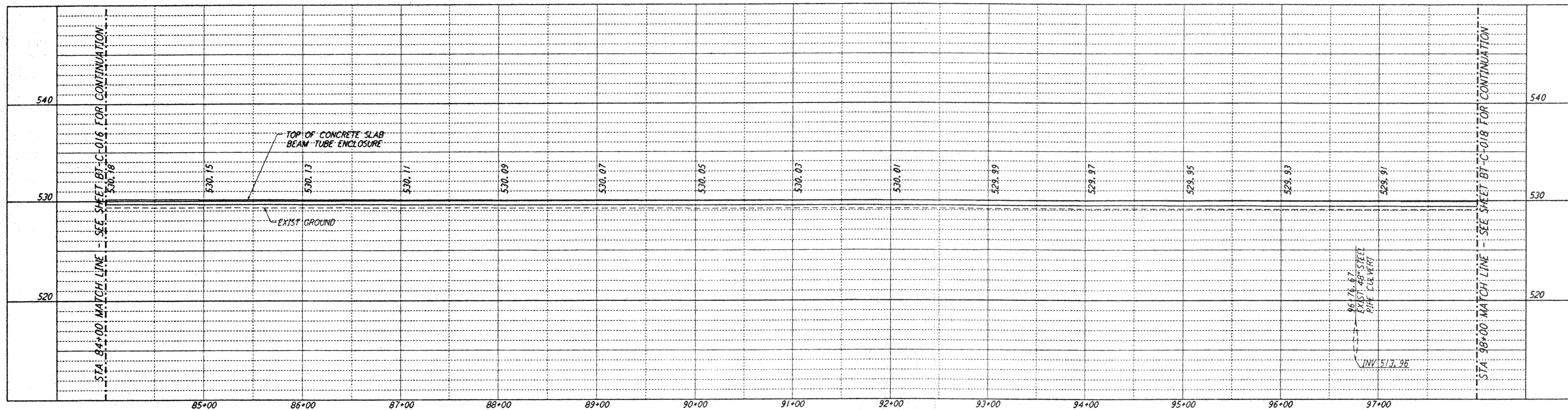
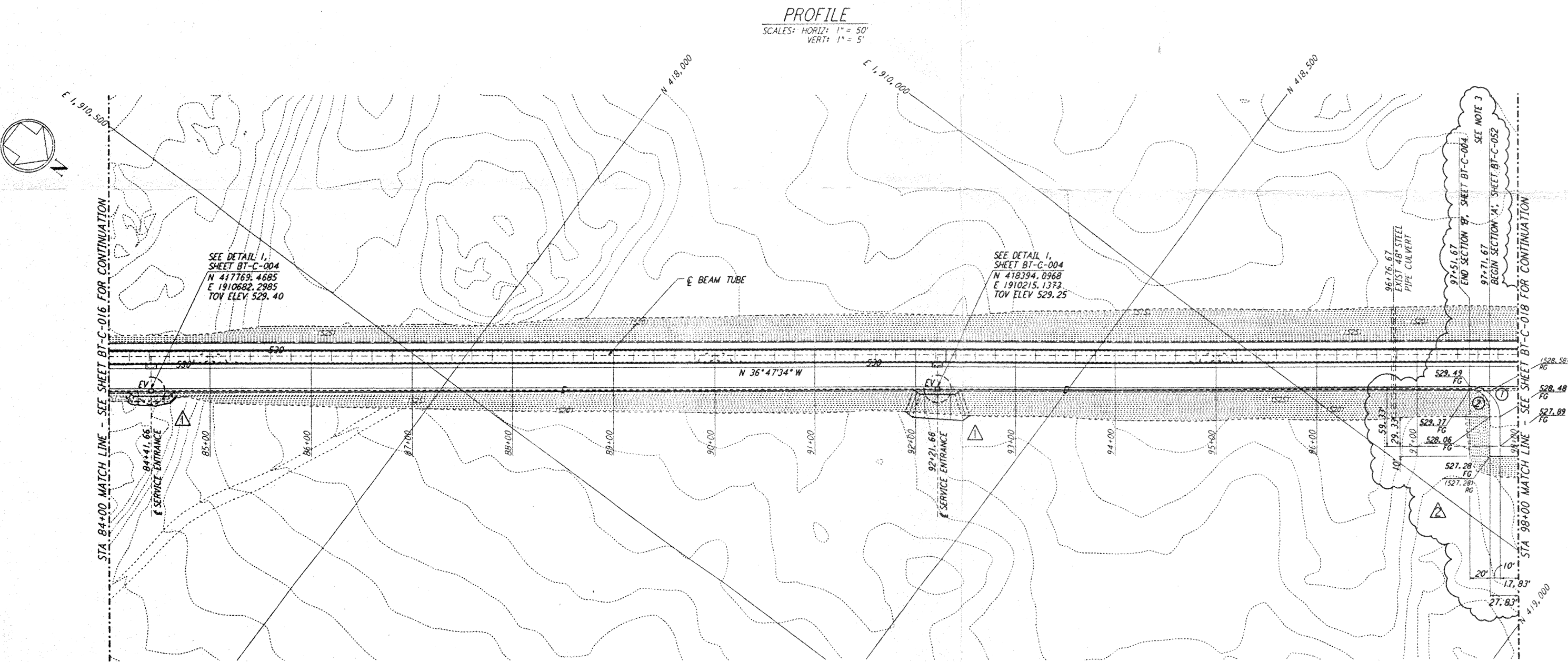


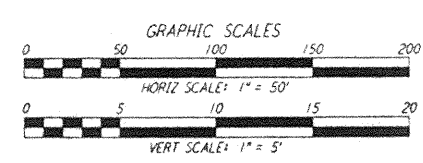
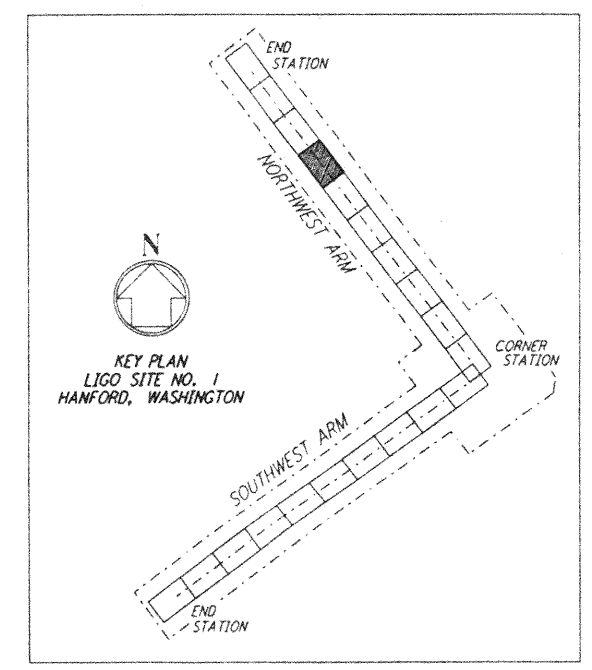
This document and the design it covers are the property of **PARSONS**. They are loaned only with the borrower's expressed written agreement that they will not be reproduced, copied, loaned, exhibited, or used in any other way, except by written consent from **PARSONS** to the borrower.



- NOTES:**
- SEE SHEET BT-C-002 FOR GENERAL NOTES, LEGEND AND ABBREVIATIONS.
 - SEE SHEET BT-C-004 FOR TYPICAL SECTIONS AND DETAILS.
 - TRANSITION BETWEEN SECTIONS, AS SHOWN ON PLAN.



CURVE DATA				
Δ	RADIUS	LENGTH	TANGENT	
1 90°00'00"	30'	47.12'	30.00'	
2 90°00'00"	20'	31.42'	20.00'	



NO.	DATE	BY	CHKD	ENGR	PROJ	DESCRIPTION
2	4-19-96	WRB	TDM	MDW		CHANGE ORDER NO. 4
1	2-29-96	WRB	JB	MDW		CHANGE ORDER NO. 2

ISSUED FOR CONSTRUCTION		
DRAWN	WRB	1-19-96
CHECKED	MP	1-19-96
ENGINEER	JB	1-19-96
PROJ	MDW	1-19-96

PARSONS
 100 WEST WALNUT STREET
 PASADENA, CALIFORNIA

LIGO
 CALIFORNIA INSTITUTE OF TECHNOLOGY
 MASSACHUSETTS INSTITUTE OF TECHNOLOGY

LASER INTERFEROMETER
 GRAVITATIONAL-WAVE OBSERVATORY
 BTE SITWORK & FABRICATION - HANFORD, WA
 TITLE: CIVIL NORTHWEST ARM PLAN AND PROFILE
 AS NOTED PPI50969 8094
 SHEET NUMBER: **BT-C-017**
 LIGO-0960713-02