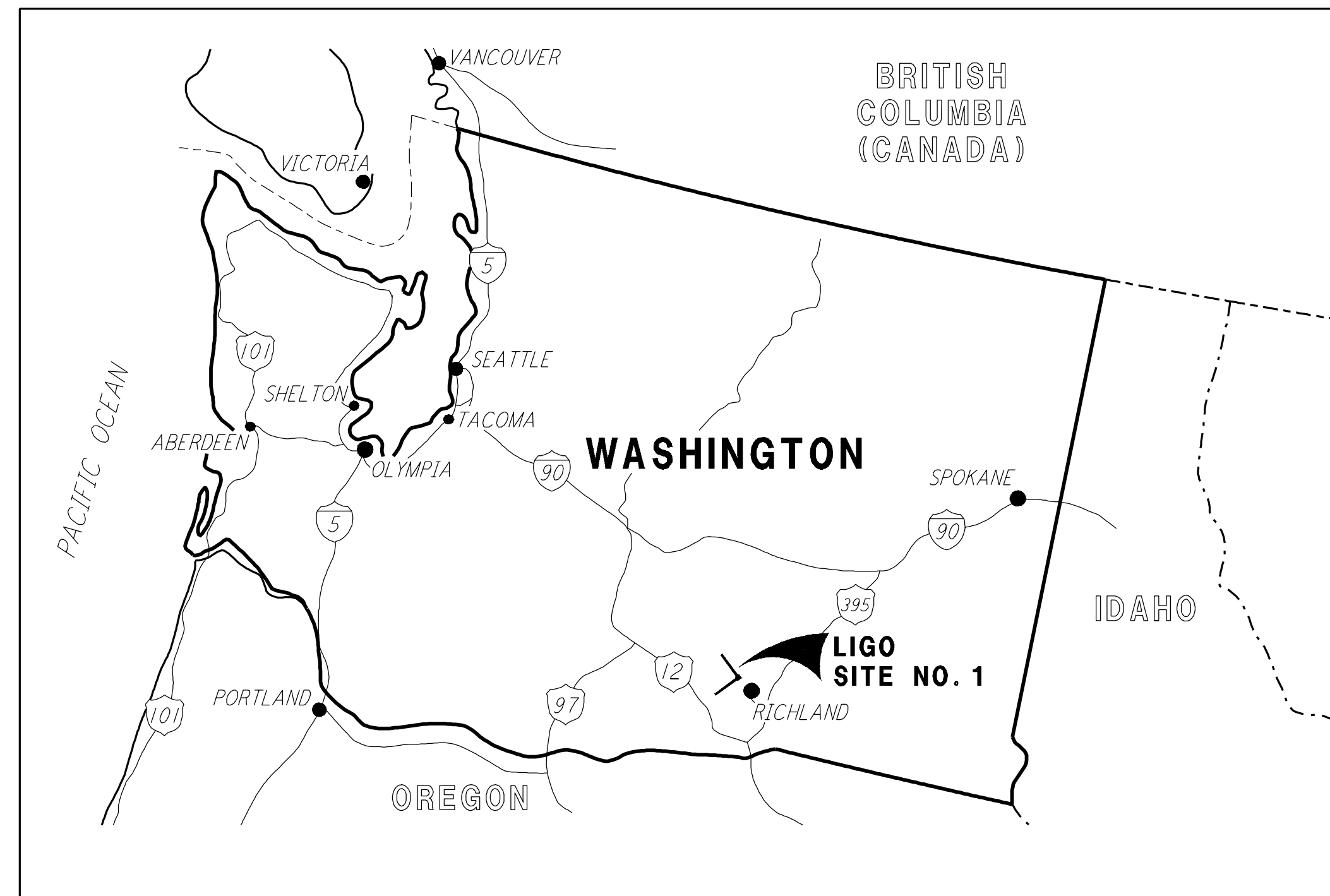
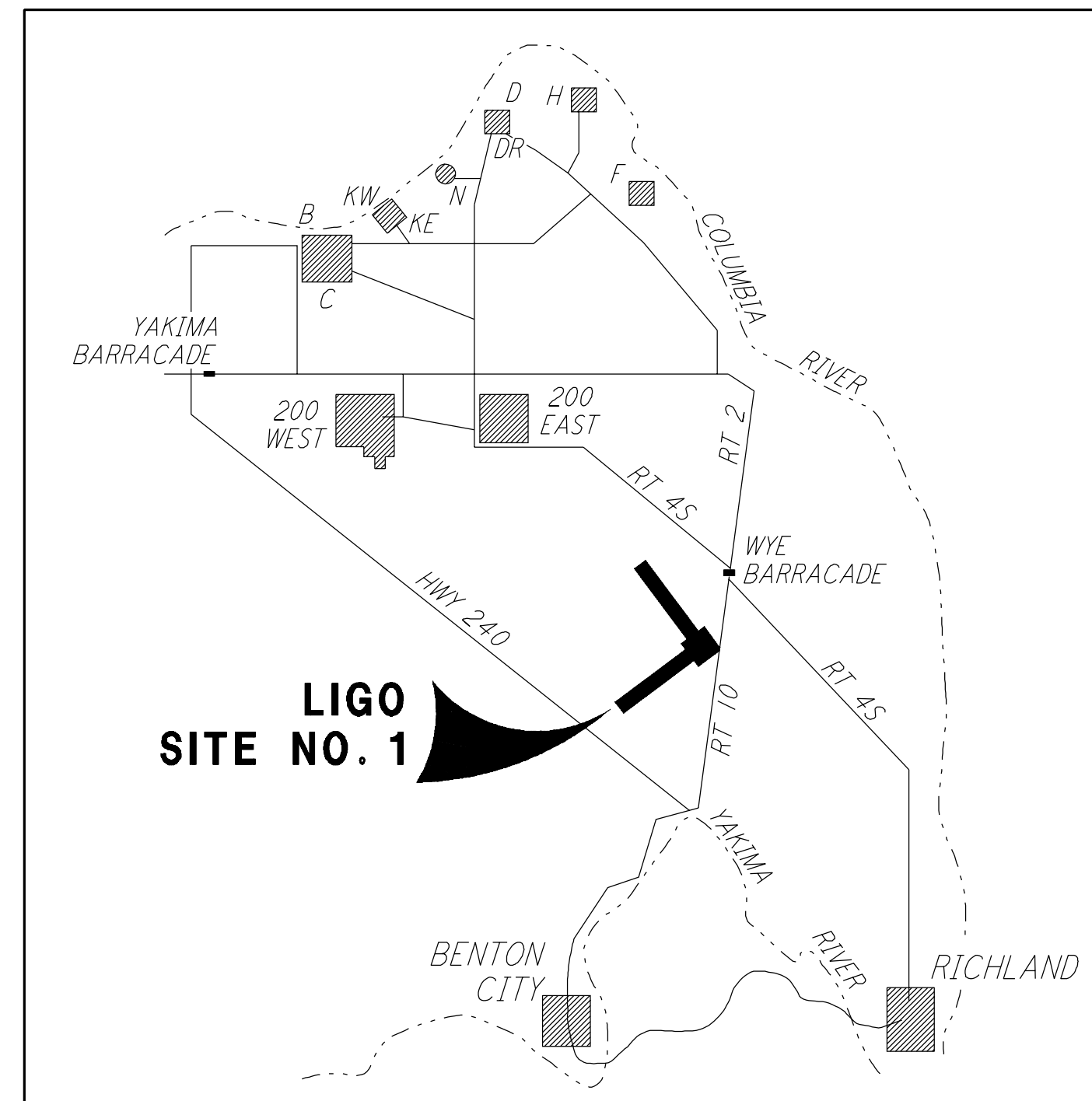


DRAWING INDEX

| SHEET NUMBER | SHEET TITLE |
|-------------------|---------------------------------------------------------------------------------|
| GENERAL | |
| BT-G-001 | GENERAL, COVER SHEET |
| CIVIL | |
| BT-C-001 | CIVIL, DRAWING INDEX, LOCATION & VICINITY MAPS |
| BT-C-002 | CIVIL, GENERAL NOTES, LEGEND & ABBREVIATIONS |
| BT-C-003 | CIVIL, DRAWING MATRIX |
| BT-C-004 | CIVIL, TYPICAL SECTIONS AND DETAILS |
| BT-C-005 | CIVIL, CORNER STATION PLAN |
| BT-C-011 | CIVIL, NORTHWEST ARM, PLAN AND PROFILE, STA 0+00 TO 14+00 |
| BT-C-012 | CIVIL, NORTHWEST ARM, PLAN AND PROFILE, STA 14+00 TO 28+00 |
| BT-C-013 | CIVIL, NORTHWEST ARM, PLAN AND PROFILE, STA 28+00 TO 42+00 |
| BT-C-014 | CIVIL, NORTHWEST ARM, PLAN AND PROFILE, STA 42+00 TO 56+00 |
| BT-C-015 | CIVIL, NORTHWEST ARM, PLAN AND PROFILE, STA 56+00 TO 70+00 |
| BT-C-016 | CIVIL, NORTHWEST ARM, PLAN AND PROFILE, STA 70+00 TO 84+00 |
| BT-C-017 | CIVIL, NORTHWEST ARM, PLAN AND PROFILE, STA 84+00 TO 98+00 |
| BT-C-018 | CIVIL, NORTHWEST ARM, PLAN AND PROFILE, STA 98+00 TO 112+00 |
| BT-C-019 | CIVIL, NORTHWEST ARM, PLAN AND PROFILE, STA 112+00 TO 126+00 |
| BT-C-020 | CIVIL, NORTHWEST ARM, PLAN AND PROFILE, STA 126+00 TO 133+00 |
| BT-C-021 | CIVIL, NORTHWEST ARM, MID-STATION, PLOT PLAN |
| BT-C-022 | CIVIL, NORTHWEST ARM, MID-STATION, GRADING PLAN |
| BT-C-023 | CIVIL, NORTHWEST ARM, MID-STATION, UTILITY PLAN |
| BT-C-025 | CIVIL, NORTHWEST ARM, END-STATION, PLOT PLAN |
| BT-C-026 | CIVIL, NORTHWEST ARM, END-STATION, GRADING PLAN |
| BT-C-027 | CIVIL, NORTHWEST ARM, END-STATION, UTILITY PLAN |
| BT-C-031 | CIVIL, SOUTHWEST ARM, PLAN AND PROFILE, STA 0+00 TO 14+00 |
| BT-C-032 | CIVIL, SOUTHWEST ARM, PLAN AND PROFILE, STA 14+00 TO 28+00 |
| BT-C-033 | CIVIL, SOUTHWEST ARM, PLAN AND PROFILE, STA 28+00 TO 42+00 |
| BT-C-034 | CIVIL, SOUTHWEST ARM, PLAN AND PROFILE, STA 42+00 TO 56+00 |
| BT-C-035 | CIVIL, SOUTHWEST ARM, PLAN AND PROFILE, STA 56+00 TO 70+00 |
| BT-C-036 | CIVIL, SOUTHWEST ARM, PLAN AND PROFILE, STA 70+00 TO 84+00 |
| BT-C-037 | CIVIL, SOUTHWEST ARM, PLAN AND PROFILE, STA 84+00 TO 98+00 |
| BT-C-038 | CIVIL, SOUTHWEST ARM, PLAN AND PROFILE, STA 98+00 TO 112+00 |
| BT-C-039 | CIVIL, SOUTHWEST ARM, PLAN AND PROFILE, STA 112+00 TO 126+00 |
| BT-C-040 | CIVIL, SOUTHWEST ARM, PLAN AND PROFILE, STA 126+00 TO 133+00 |
| BT-C-041 | CIVIL, SOUTHWEST ARM, MID-STATION, PLOT PLAN |
| BT-C-042 | CIVIL, SOUTHWEST ARM, MID-STATION, GRADING PLAN |
| BT-C-043 | CIVIL, SOUTHWEST ARM, MID-STATION, UTILITY PLAN |
| BT-C-045 | CIVIL, SOUTHWEST ARM, END-STATION, PLOT PLAN |
| BT-C-046 | CIVIL, SOUTHWEST ARM, END-STATION, GRADING PLAN |
| BT-C-047 | CIVIL, SOUTHWEST ARM, END-STATION, UTILITY PLAN |
| BT-C-051 | CIVIL, SITEWORK DETAILS |
| BT-C-052 | CIVIL, GRADING SECTIONS & DETAILS |
| STRUCTURAL | |
| BT-S-001 | STRUCTURAL, GENERAL NOTES, ABBREVIATIONS & LEGEND |
| BT-S-002 | STRUCTURAL, KEY PLAN OF BEAM TUBE ENCLOSURE & PARTIAL ENLARGED PLANS |
| BT-S-003 | STRUCTURAL, BEAM TUBE ENCLOSURE PLANS, SECTIONS & DETAILS |
| BT-S-004 | STRUCTURAL, KEY PLAN OF BEAM TUBE ENCLOSURE FOUNDATION & PARTIAL ENLARGED PLANS |
| BT-S-005 | STRUCTURAL, BEAM TUBE ENCLOSURE, SECTIONS & DETAILS, SHEET 1 |
| BT-S-006 | STRUCTURAL, BEAM TUBE ENCLOSURE, SECTIONS & DETAILS, SHEET 2 |
| BT-S-601 | STRUCTURAL, GENERAL NOTES, ABBREVIATIONS & LEGEND |
| BT-S-602 | STRUCTURAL, STANDARD, CONCRETE DETAILS SHEET 1 |
| BT-S-603 | STRUCTURAL, STANDARD, CONCRETE DETAILS SHEET 2 |
| BT-S-604 | STRUCTURAL, MID STATION "B" & END STATION "B", FOUNDATION PLANS |
| BT-S-605 | STRUCTURAL, MID & END STATIONS "B", AIR HANDLING UNIT ENCLOSURE PLANS |
| BT-S-606 | STRUCTURAL, MID & END STATIONS "B", AIR HANDLING UNIT ENCLOSURE ELEVS & SECTS |
| BT-S-607 | STRUCTURAL, MID AND END STATIONS "B", FOUNDATION SCHEDULE AND DETAILS |
| BT-S-608 | STRUCTURAL, FOUNDATION SECTIONS & DETAILS |
| ELECTRICAL | |
| BT-E-601 | ELECTRICAL, MID & END STATION, GROUNDING PLAN |
| BT-E-602 | ELECTRICAL, MID & END STATION, UNDERGROUND PLAN |
| BT-E-603 | ELECTRICAL, GROUNDING DETAILS, SHEET 1 |
| BT-E-604 | ELECTRICAL, GROUNDING DETAILS, SHEET 2 |
| PLUMBING | |
| BT-P-601 | PLUMBING, MID & END STATIONS "B", UNDERGROUND PLAN |
| BT-P-602 | PLUMBING, MID & END STATIONS "B", RISER DIAGRAM & SCHEMATICS |



LOCATION MAP
NOT TO SCALE

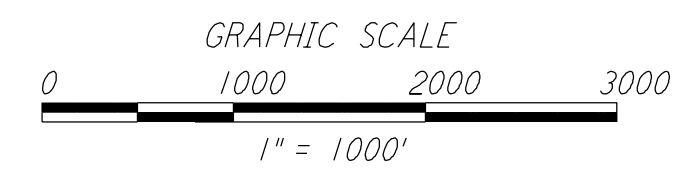
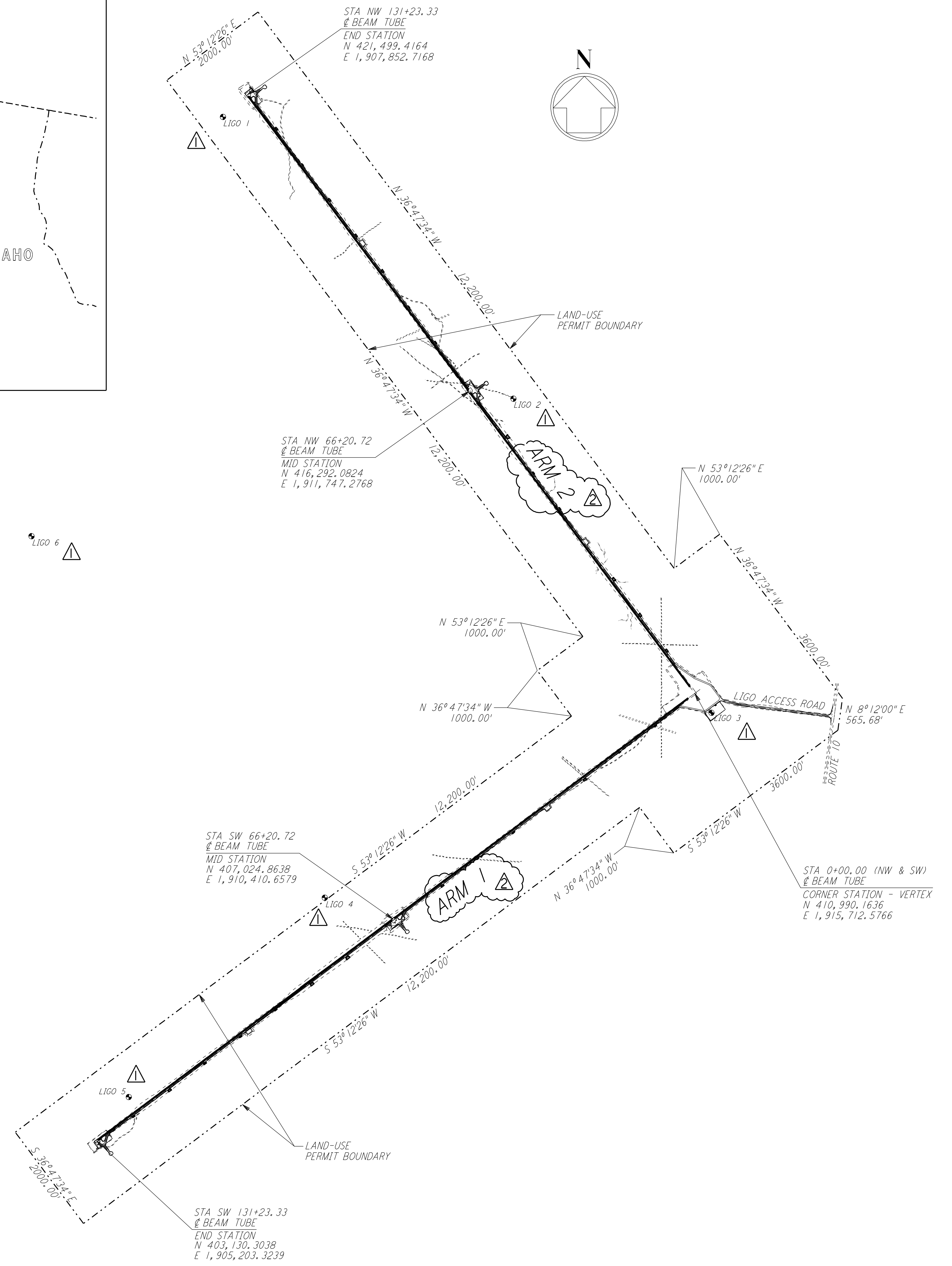


VICINITY MAP
NOT TO SCALE

COORDINATE TABLE & ELEVATIONS FOR LIGO GPS POINTS

| GPS POINT | COORDINATES | | ELEVATION |
|-----------|-------------|-------------|-----------|
| | NORTH | EAST | |
| LIGO 1 | 421113.464 | 1907424.820 | 563.237 |
| LIGO 2 | 416164.285 | 1912526.068 | 550.905 |
| LIGO 3 | 410647.803 | 1916004.584 | 542.532 |
| LIGO 4 | 407401.131 | 1909213.733 | 561.242 |
| LIGO 5 | 403900.640 | 1905770.659 | 554.431 |
| LIGO 6 | 413750.547 | 1904062.124 | |

NOTE: GPS COORDINATE POINTS ARE HIGH ACCURACY, PLACED BY THE WSDOT GEOGRAPHIC SERVICES.



LIGO-D960707-02-0

| NO. | DATE | BY | CHKD | ENGR | PROJ | DESCRIPTION |
|-----|---------|-----|------|------|------|--------------------|
| 2 | 4-19-96 | WRB | | | | CHANGE ORDER NO. 4 |
| 1 | 2-29-96 | WRB | TDM | JB | MDW | CHANGE ORDER NO. 2 |

| ISSUED FOR CONSTRUCTION | | |
|-------------------------|-----|---------|
| DRAWN | WRB | 1-19-96 |
| CHECKED | MP | 1-19-96 |
| ENGINEER | JB | 1-19-96 |
| PROJ | MDW | 1-19-96 |



100 WEST WALNUT STREET
PASADENA, CALIFORNIA



CALIFORNIA INSTITUTE OF TECHNOLOGY
MASSACHUSETTS INSTITUTE OF TECHNOLOGY

| LASER INTERFEROMETER GRAVITATIONAL-WAVE OBSERVATORY BTE SITEWORK & FABRICATION - HANFORD, WA | | | |
|----------------------------------------------------------------------------------------------|----------------------------------------------|----------------|----------|
| TITLE | CIVIL DRAWING INDEX LOCATION & VICINITY MAPS | SCALE | AS NOTED |
| CONTRACT NUMBER | PP150969 | PROJECT NUMBER | 8094 |
| SHEET NUMBER | BT-C-001 | REVISIONS | |

This document and the design it covers are the property of PARSONS. They are loaned only with the borrower's expressed written agreement that they will not be reproduced, copied, loaned, exhibited, or used in any other way, except by written consent from PARSONS to the borrower.