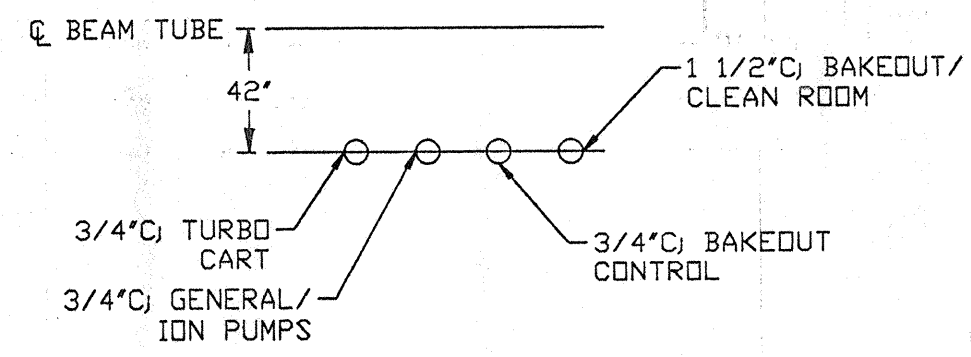
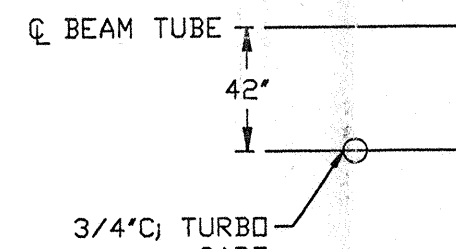


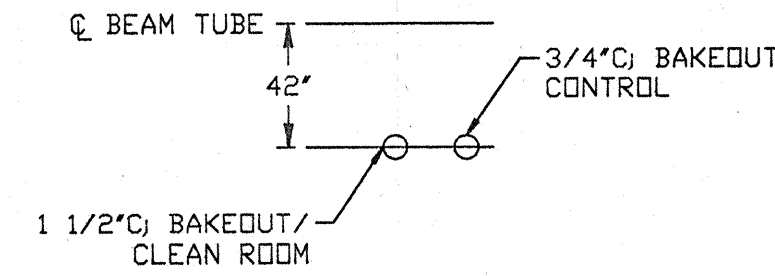
DETAIL 1  
NO SCALE



DETAIL 2  
NO SCALE



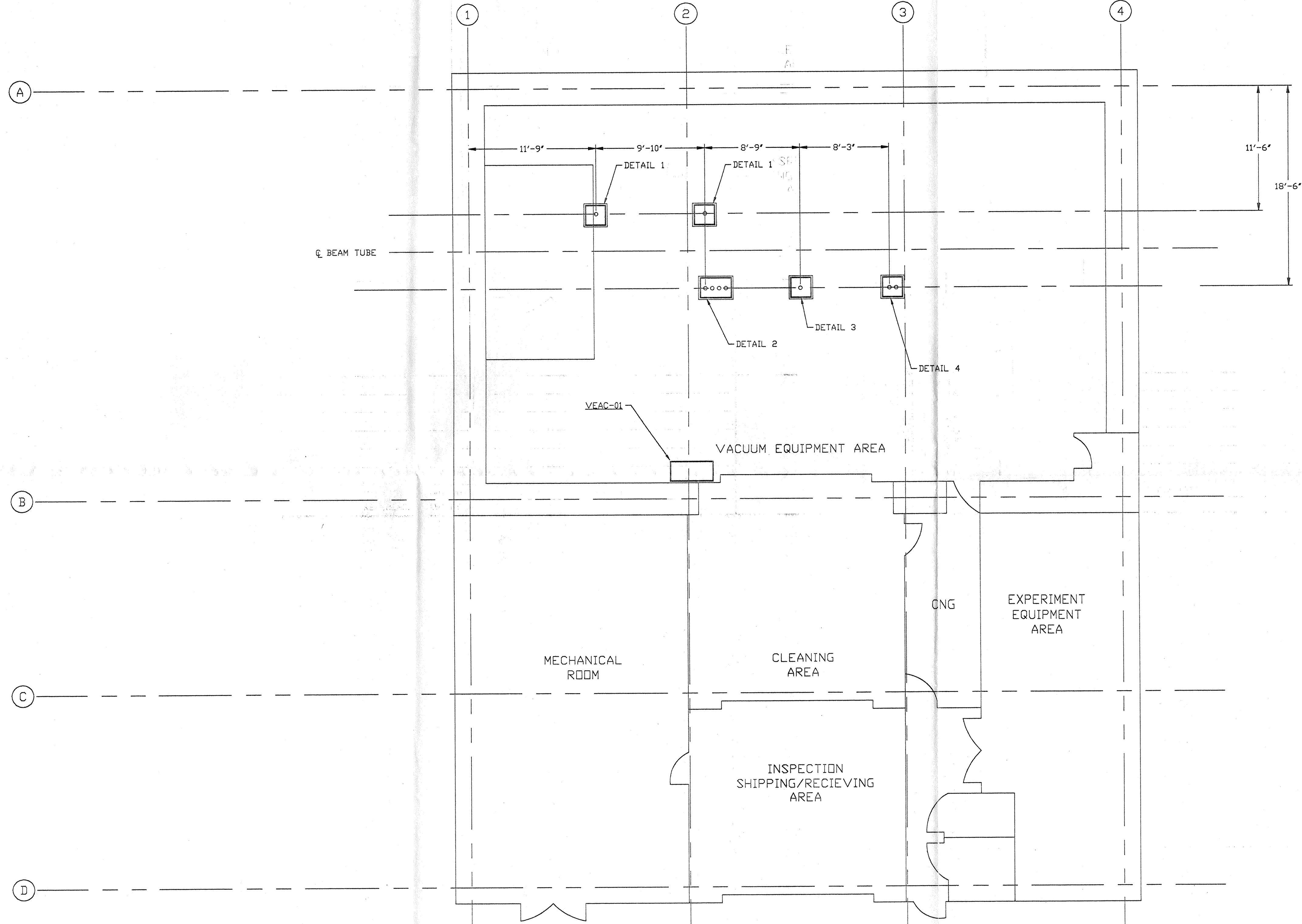
DETAIL 3  
NO SCALE



DETAIL 4  
NO SCALE

NOTES:

- 1.) PROVIDE PULL TAPE IN EACH CONDUIT.
- 2.) ALL UNDERGROUND INSTALLATION AND DETAILS ARE BY OTHERS.
- 3.) POWER SOURCE SHALL BE AS FOLLOWS:
  - A) BAKEDOUT/CLEAN ROOM 480/277VAC
  - B) GATE VALVE 480/277VAC
  - C) GENERAL/IGN PUMPS 120VAC
  - D) BAKEDOUT CONTROL 120VAC
  - E) TURBO CART 208/120VAC
- 4.) FOR EQUIPMENT POWER REQUIREMENTS, REFER TO PSI DOCUMENT #V049-1-047.



LEGEND:

- POWER STATION LOCATION
- STUB-UP LOCATIONS

FEB 29 1996

PROPRIETARY AND CONFIDENTIAL

THIS DOCUMENT CONTAINS PROPRIETARY INFORMATION BELONGING TO PROCESS SYSTEMS INTERNATIONAL, INC. OR ITS AFFILIATED COMPANIES AND SHALL BE USED ONLY FOR THE PURPOSE FOR WHICH IT WAS SUPPLIED. IT SHALL NOT BE COPIED, REPRODUCED OR OTHERWISE USED, NOR SHALL SUCH INFORMATION BE FURNISHED IN WHOLE OR IN PART TO OTHERS EXCEPT IN ACCORDANCE WITH THE TERMS OF ANY AGREEMENT UNDER WHICH IT WAS SUPPLIED OR WITH THE PRIOR WRITTEN CONSENT OF PROCESS SYSTEMS INTERNATIONAL, INC. AND SHALL BE RETURNED UPON REQUEST.

UNLESS OTHERWISE SPECIFIED DIMENSIONS ARE IN INCHES  
TOLERANCES:  
FRACTIONAL ±  
ANGULAR/MACH 10°-30° BEND ±2°  
TWO PLACE DECIMAL ±.01  
THREE PLACE DECIMAL ±.005  
FINISHED SURFACE, RHS  
BREAK CORNERS IN OUT.  
REMOVE ALL BURRS

DO NOT SCALE THIS DRAWING  
USED ON:  
NEXT ASS'Y:

REV	DESCRIPTION	ISSUE DESCRIPTION
P1	PRELIMINARY	

CHKD	DRWN	DATE	DEO#
		02.29.96	0074



PROCESS SYSTEMS INTERNATIONAL, INC.  
20 WALKUP DR. WESTBOROUGH, MASSACHUSETTS 01581 USA

ELECTRICAL CONDUIT STUB-UP PLAN  
LIGO VACUUM EQUIPMENT  
WASHINGTON SITE  
RIGHT END STATION

CAD FILE	SIZE	DWG. NO.	REV.
V0493505	D	V049-3-505	P1
SCALE	SHEET		1 OF 1
3/16" = 1' - 0"	1 LIGO-D960603 PI-V		