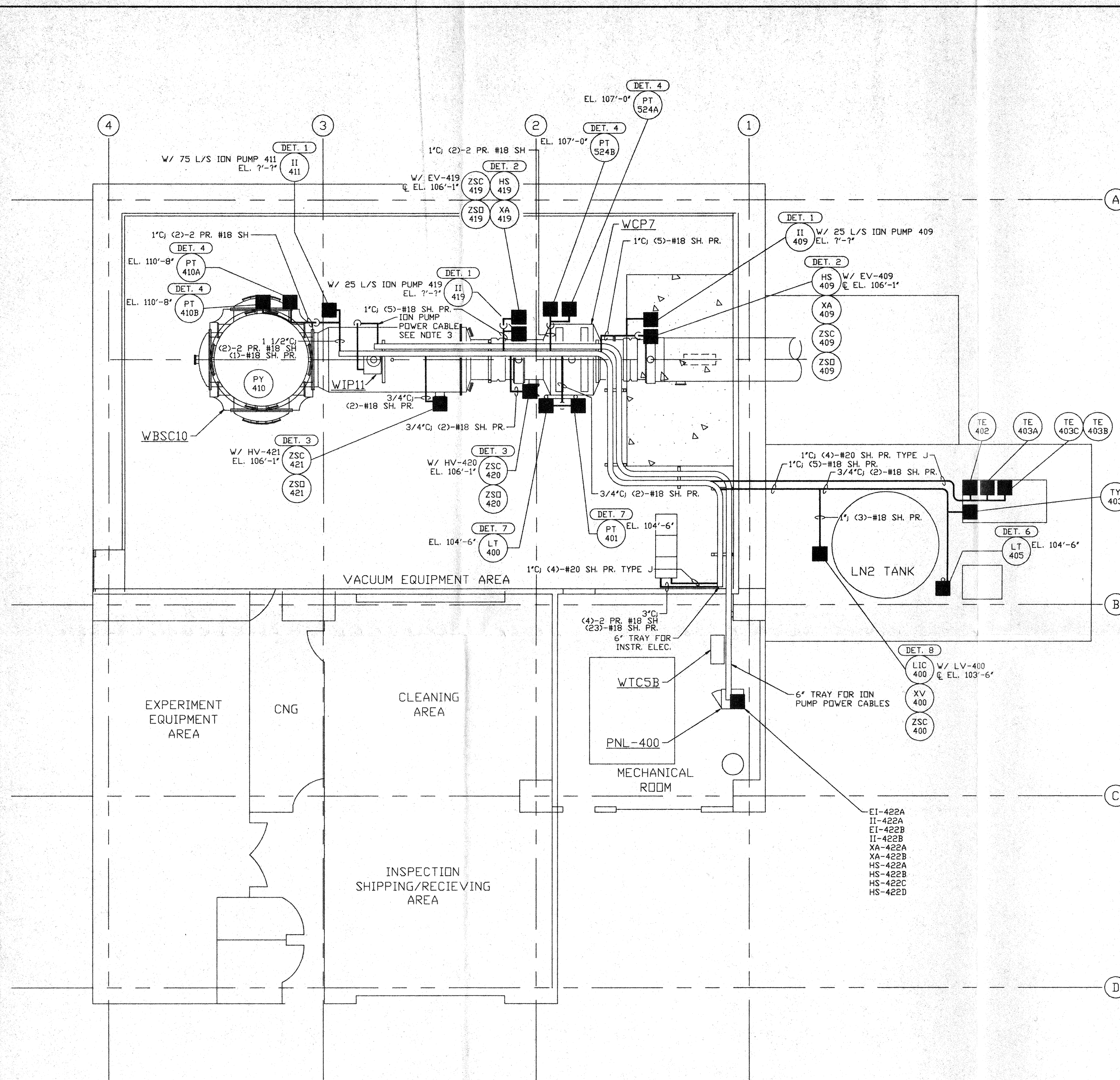


NOTES:

- 1) FOR INSTRUMENT ELECTRICAL INSTALLATION DETAILS SEE PSI DWG. V049-3-007.
- 2) CONDUIT IS SHOWN DIAGRAMMATICALLY AND SHALL BE FIELD VERIFIED SO AS TO OPTIMIZE SUPPORTING MEANS AND TO AVOID INTERFERENCES WITH PIPING SYSTEMS.
- 3) ION PUMP POWER CABLES SHALL BE RUN IN 2" CABLE CHANNEL FROM ION PUMP DOWN TO 4" TRAY LOCATED UNDER BEAM TUBE.



NOT FOR CONSTRUCTION

LEGEND

- INSTRUMENT ELECTRICAL CONNECTION
- ⊘ INSTRUMENT IDENTIFICATION
- DET. X) INSTALLATION DETAIL SEENOTE 1

APR 30 1996

D960593-00-V

PROPRIETARY AND CONFIDENTIAL THIS DOCUMENT CONTAINS PROPRIETARY INFORMATION BELONGING TO PROCESS SYSTEMS INTERNATIONAL, INC. OR ITS AFFILIATED COMPANIES AND SHALL BE USED ONLY FOR THE PURPOSE FOR WHICH IT WAS SUPPLIED. IT SHALL NOT BE COPIED, REPRODUCED OR OTHERWISE USED, NOR SHALL SUCH INFORMATION BE FURNISHED IN WHOLE OR IN PART TO OTHERS EXCEPT IN ACCORDANCE WITH THE TERMS OF ANY AGREEMENT UNDER WHICH IT WAS SUPPLIED OR WITH THE PRIOR WRITTEN CONSENT OF PROCESS SYSTEMS INTERNATIONAL, INC. AND SHALL BE RETURNED UPON REQUEST.	V049-3-407	PNL-400 WIRING DIAGRAM																			
	V049-3-401	INSTRUMENT PLAN WASHINGTON LEFT END STATION																			
	V049-3-007	INSTRUMENT ELECTRICAL INSTALLATION DETAILS																			
	V049-3-002	WASHINGTON OVERALL SITE PLAN																			
	V049-3-001	GENERAL NOTES & LEGEND	V049-5-???	EQUIP. ARRANGEMENT WASHINGTON LEFT END STATION																	
	V049-0-010	P & I D WASHINGTON LEFT END STATION	V049-3-408	CDS INTERFACE DIAGRAM																	
DWG. NO.		DESCRIPTION	DWG. NO.	DESCRIPTION																	
8		7		6		5		4		3		2		1							

UNLESS OTHERWISE SPECIFIED DIMENSIONS ARE IN INCHES

TOLERANCES:
 FRACTIONAL ±
 ANGULAR/RADIUS 30°-90° BEND ±2°
 THREE PLACE DECIMAL ± .005
 FINISHED SURFACE RMS
 BREAK CORNERS IN OUT:
 REMOVE ALL BURRS

DO NOT SCALE THIS DRAWING

USED ON:

NEXT ASS'Y:

0 ISSUE FOR FDR

REV DESCRIPTION

CHKD DRWN DATE DEO#

ISSUE DESCRIPTION

04.26.96 0129

CAD FILE V0493403

SCALE 3/16" = 1" - 0"

PROCESS SYSTEMS INTERNATIONAL INC.
 20 WALKUP DR. WESTBOROUGH, MASSACHUSETTS 01581 USA

INSTRUMENT ELECTRICAL PLAN
 LIGO VACUUM EQUIPMENT
 WASHINGTON SITE
 LEFT END STATION

REV. 0

SHEET 1 OF 1