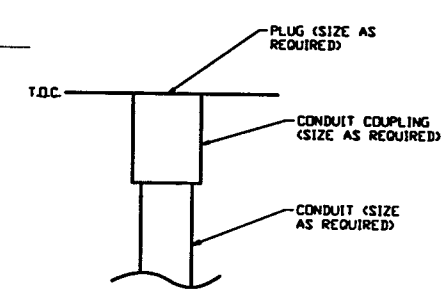
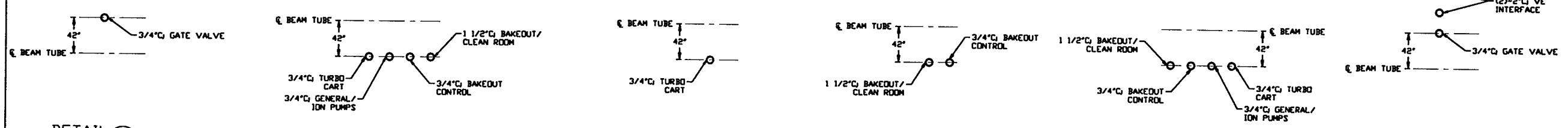
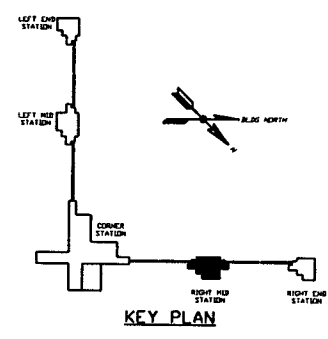


- NOTES:**
- 1) PROVIDE PULL TAPE IN EACH CONDUIT.
 - 2) ALL UNDERGROUND INSTALLATION AND DETAILS ARE BY OTHERS.
 - 3) POWER SOURCE SHALL BE AS FOLLOWS:
 - A) BAKEDOUT/CLEAN ROOM 480/277VAC
 - B) GATE VALVE 480/277VAC
 - C) GENERAL/ION PUMPS 120VAC
 - D) BAKEDOUT CONTROL 120VAC
 - E) TURBO CART 208/120VAC
 - 4) FOR EQUIPMENT POWER REQUIREMENTS, REFER TO PSI DOCUMENT #V049-1-047.
 - 5) FOR GENERAL NOTES & LEGEND SEE PSI DVG. #V049-3-001 SHT. 1.
 - 6) FOR LIST OF CIVIL CONTRACTOR REFERENCE DVGs. WITH CURRENT REVISIONS SEE PSI DVG. #V049-3-001 SHT. 2.



PRELIMINARY NOT FOR CONSTRUCTION
FADI AZIZ BARK
WA REG. #33057



RIGHT MID STATION PLAN @ EL. 100'-0"

DETAIL 1 REF. THIS SHT. NO SCALE
DETAIL 2 REF. THIS SHT. NO SCALE
DETAIL 3 REF. THIS SHT. NO SCALE
DETAIL 4 REF. THIS SHT. NO SCALE
DETAIL 5 REF. THIS SHT. NO SCALE
DETAIL 6 REF. THIS SHT. NO SCALE

DWG. NO.	DESCRIPTION	DWG. NO.	DESCRIPTION
8	REFERENCE DRAWINGS	7	
6		5	
4		3	
2		1	

L160-D960587-02-V

PROCESS SYSTEMS INTERNATIONAL, INC.
20 WALRUP DR. WESTBOROUGH, MASSACHUSETTS 01581 USA

ELECTRICAL CONDUIT STUB-UP PLAN
LIGO VACUUM EQUIPMENT
WASHINGTON SITE
RIGHT MID STATION

ISSUE DESCRIPTION	REV	DATE	DESN
2 ISSUE FOR FDR UPDATE & BID		11.25.96	0355
1 ISSUE FOR INSTALLATION		08.15.96	0241
0 ISSUE FOR FDR		04.26.96	0129

SCALE 3/16" = 1' - 0"

SHEET 1 OF 1