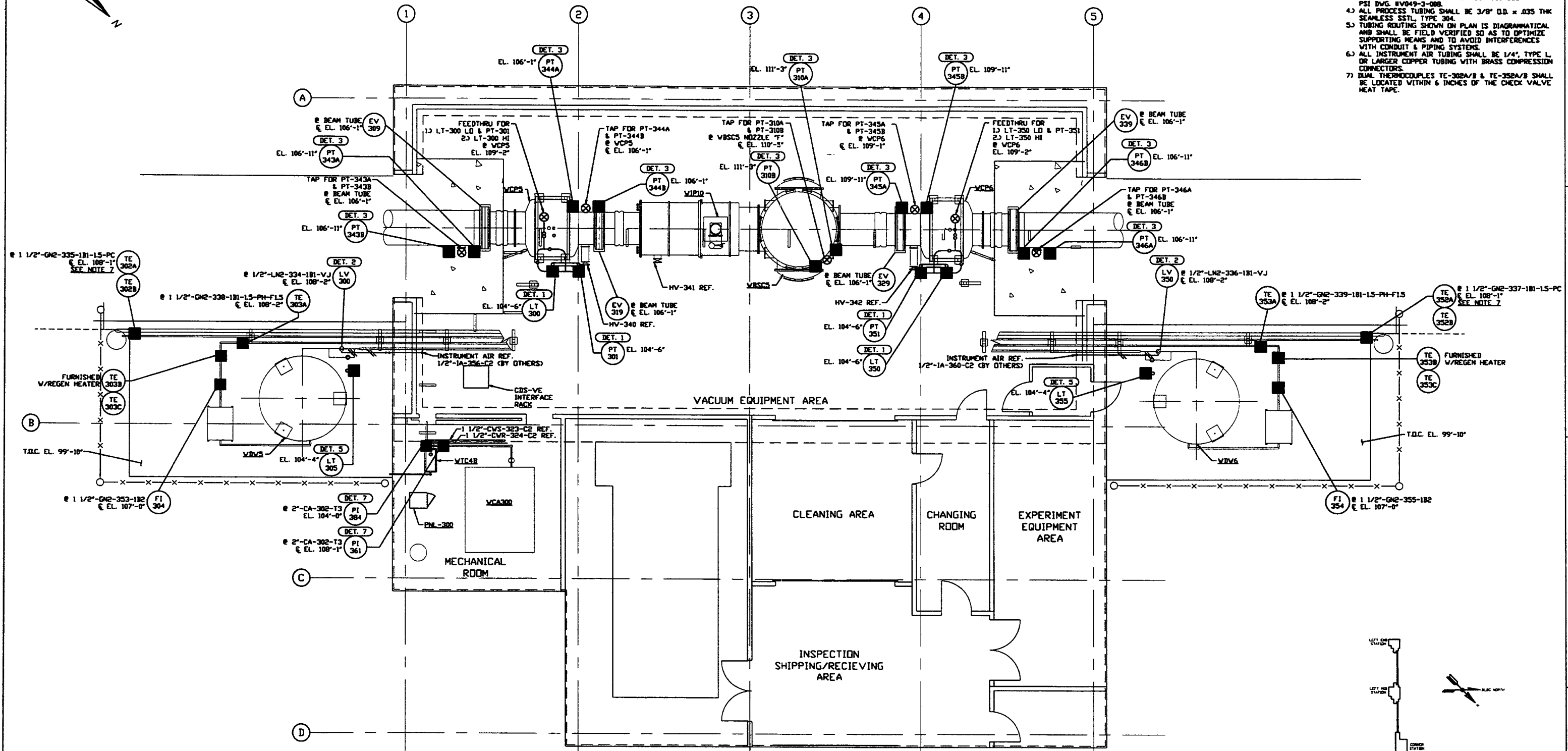


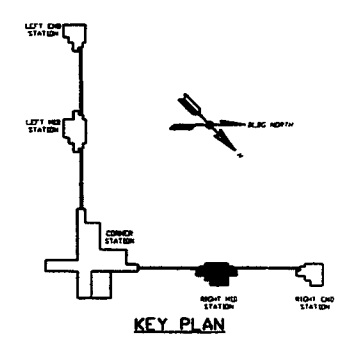


NOTES:

- 1) FOR GENERAL NOTES & LEGEND SEE PSI DWG. #V049-3-001 SHT. 1
- 2) FOR LIST OF CIVIL CONTRACTOR REFERENCE DWGS. WITH CURRENT REVISIONS SEE PSI DWG. #V049-3-001 SHT. 2
- 3) FOR INSTRUMENT INSTALLATION DETAILS SEE PSI DWG. #V049-3-008
- 4) ALL PROCESS TUBING SHALL BE 3/8" O.D. x .035 THK SEAMLESS SS316 TYPE 304.
- 5) TUBING ROUTING SHOWN ON PLAN IS DIAGRAMMATICAL AND SHALL BE FIELD VERIFIED SO AS TO OPTIMIZE SUPPORTING MEANS AND TO AVOID INTERFERENCES WITH CONDUIT & PIPING SYSTEMS.
- 6) ALL INSTRUMENT AIR TUBING SHALL BE 1/4" TYPE L OR LARGER COPPER TUBING WITH BRASS COMPRESSION CONNECTORS.
- 7) DUAL THERMOCOUPLES TE-302A/B & TE-352A/B SHALL BE LOCATED WITHIN 6 INCHES OF THE CHECK VALVE HEAT TAPE.



RIGHT MID STATION PLAN @ EL. 100'-0"



DWG. NO.	DESCRIPTION	DWG. NO.	DESCRIPTION	REV	DESCRIPTION	CHKD	DRWN	DATE	SEDR
V049-5-004	EQUIP. ARRANGEMENT WASHINGTON RIGHT MID STATION								
V049-3-008	INSTRUMENT INSTALLATION DETAILS								
V049-3-002	WASHINGTON OVERALL SITE PLAN								
V049-3-001	GENERAL NOTES & LEGEND								
V049-0-016	P & I D WASHINGTON RIGHT MID STATION								
V049-0-006	P & I D BOX CRYOPUMP								
V049-5-017	PIPING PLAN WASHINGTON RIGHT MID STATION								

ISSUE NO.	ISSUE DATE	ISSUE DESCRIPTION
2	05.12.97	ISSUE FOR CONSTRUCTION
1	11.25.96	ISSUE FOR FOR UPDATE & BID
0	04.26.96	ISSUE FOR FOR

SCALE	SHEET	TOTAL SHEETS
3/16" = 1' - 0"	1 OF 1	1

PROCESS SYSTEMS INTERNATIONAL INC.
 20 WALKUP DR. WESTBOROUGH, MASSACHUSETTS 01581 USA

INSTRUMENT PLAN
LIGO VACUUM EQUIPMENT
WASHINGTON SITE
RIGHT MID STATION

CAD FILE: V0493301
 SIZE: D
 DWG NO.: V049-3-301
 REV: 2

SCALE: 3/16" = 1' - 0" SHEET: 1 OF 1