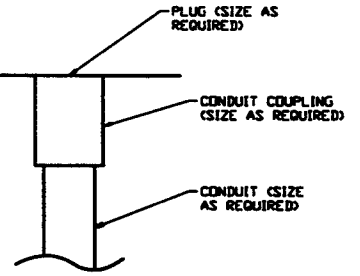
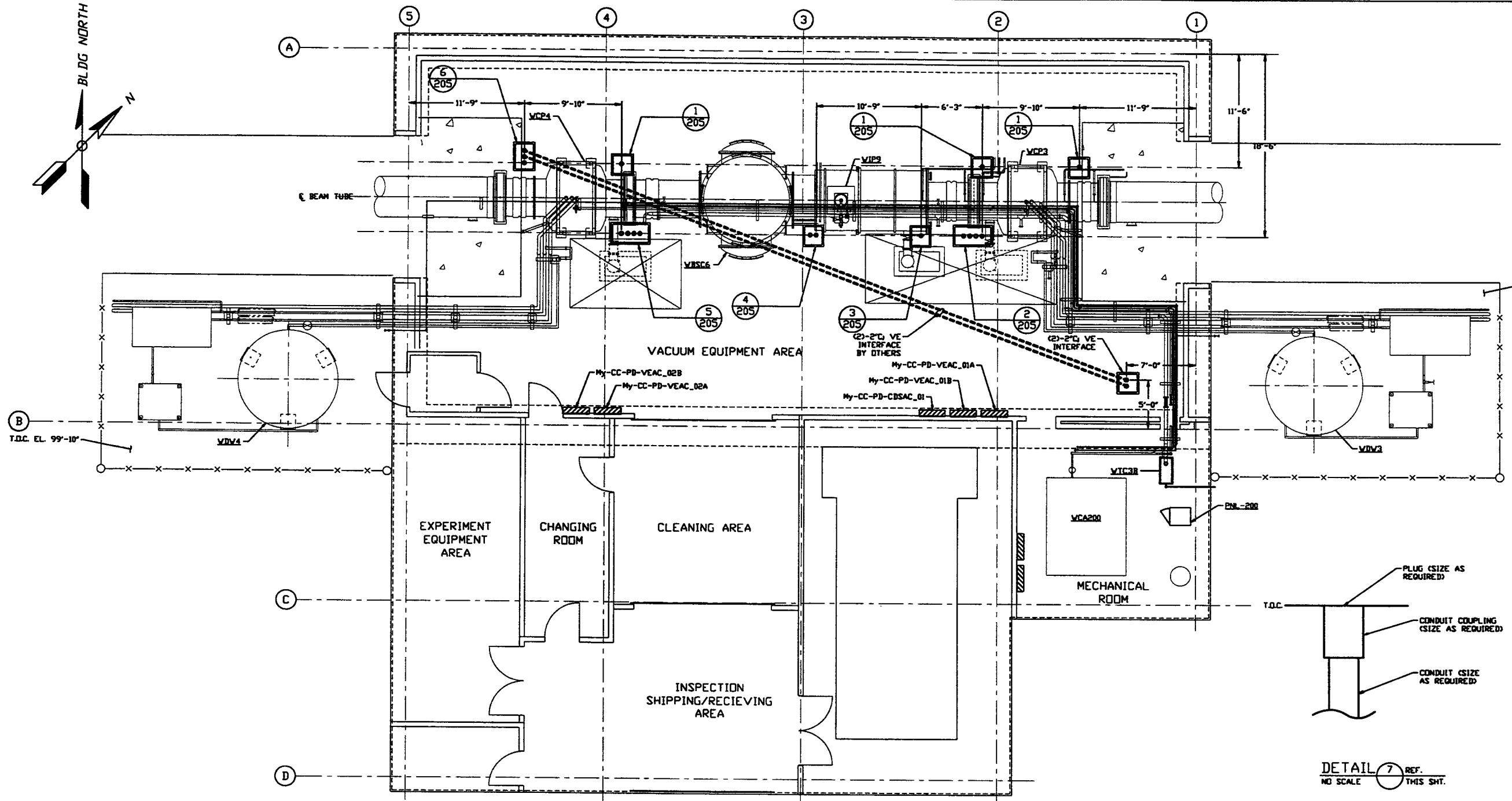
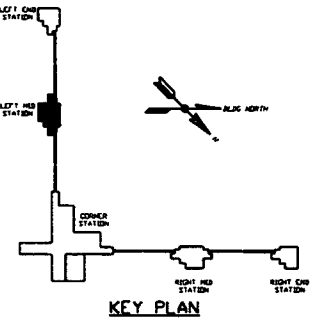
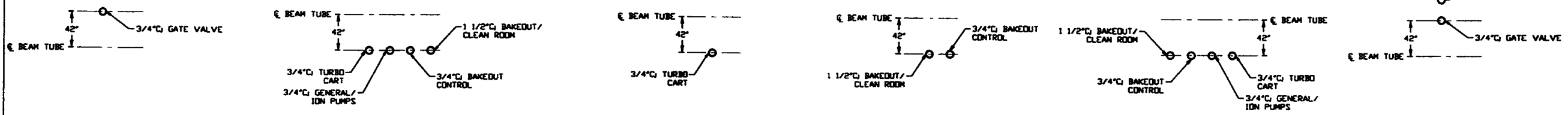


- NOTES:**
- 1) PROVIDE PULL TAPE IN EACH CONDUIT.
 - 2) ALL UNDERGROUND INSTALLATION AND DETAILS ARE BY OTHERS.
 - 3) POWER SOURCE SHALL BE AS FOLLOWS:
 - A) BAKEDOUT/CLEAN ROOM 480/277VAC
 - B) GATE VALVE 480/277VAC
 - C) GENERAL/ION PUMPS 120VAC
 - D) BAKEDOUT CONTROL 120VAC
 - E) TURBO CART 208/120VAC
 - 4) FOR EQUIPMENT POWER REQUIREMENTS, REFER TO PSI DOCUMENT #V049-1-047.
 - 5) FOR GENERAL NOTES & LEGEND SEE PSI DWG. #V049-3-001 SHT. 1.
 - 6) FOR LIST OF CIVIL CONTRACTOR REFERENCE DWGS. WITH CURRENT REVISIONS SEE PSI DWG. #V049-3-001 SHT. 2.



LEFT MID STATION PLAN @ EL. 100'-0"



DETAIL 1 REF. THIS SHT. NO SCALE. DETAIL 2 REF. THIS SHT. NO SCALE. DETAIL 3 REF. THIS SHT. NO SCALE. DETAIL 4 REF. THIS SHT. NO SCALE. DETAIL 5 REF. THIS SHT. NO SCALE. DETAIL 6 REF. THIS SHT. NO SCALE.

<p>PROPRIETARY AND CONFIDENTIAL</p> <p>THIS DOCUMENT CONTAINS PROPRIETARY INFORMATION BELONGING TO PROCESS SYSTEMS INTERNATIONAL, INC. OR ITS AFFILIATED COMPANIES AND SHALL BE USED ONLY FOR THE PURPOSE FOR WHICH IT WAS SUPPLIED. IT SHALL NOT BE COPIED, REPRODUCED OR OTHERWISE USED, IN WHOLE OR IN PART, WITHOUT THE WRITTEN CONSENT OF PROCESS SYSTEMS INTERNATIONAL, INC. AND SHALL BE RETURNED UPON REQUEST.</p>		<p>UNLESS OTHERWISE SPECIFIED</p> <p>DIMENSIONS ARE IN INCHES</p> <p>TOLERANCES:</p> <p>FRACTIONAL: ± 1/16" (1/32" MIN)</p> <p>DECIMAL: ± 0.01" (0.005" MIN)</p> <p>THREE PLACE DECIMAL: ± 0.005" (0.002" MIN)</p> <p>FINISHED SURFACE: R0.8</p> <p>BREAK CORNERS: R0.125"</p> <p>REMOVE ALL BURRS</p>		<p>3 ISSUE FOR CONSTRUCTION</p> <p>2 ISSUE FOR FOR UPDATE & BID</p> <p>1 ISSUE FOR INSTALLATION</p> <p>0 ISSUE FOR FOR</p>		<p>DO NOT SCALE THIS DRAWING</p> <p>USED ON:</p> <p>REV</p> <p>DESCRIPTION</p>		<p>ISSUE DESCRIPTION</p>		<p>SCALE 3/16" = 1' - 0"</p> <p>SHEET 1 OF 1</p>	
DWG. NO.	DESCRIPTION	DWG. NO.	DESCRIPTION	REV	DESCRIPTION	CHKD	DRWN	DATE	BE08	<p>PROCESS SYSTEMS INTERNATIONAL, INC.</p> <p>20 WALKUP DR. WESTBOROUGH, MASSACHUSETTS 01581 USA</p> <p>ELECTRICAL CONDUIT STUB-UP PLAN</p> <p>LIGO VACUUM EQUIPMENT</p> <p>WASHINGTON SITE</p> <p>LEFT MID STATION</p> <p>CAR FILE V0493205</p> <p>SIZE D</p> <p>DWG. NO. V049-3-205</p> <p>REV. 3</p>	