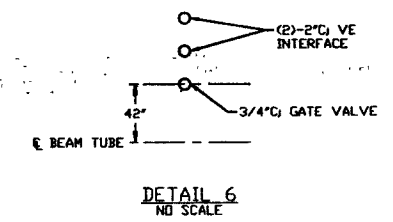
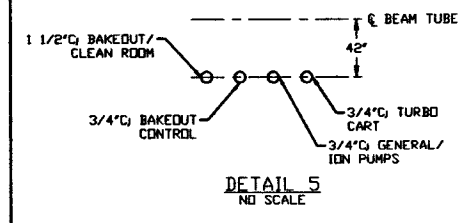
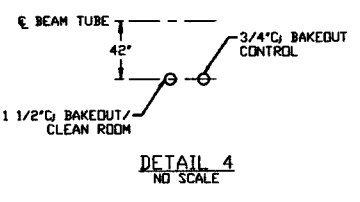
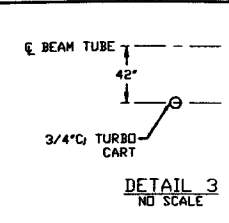
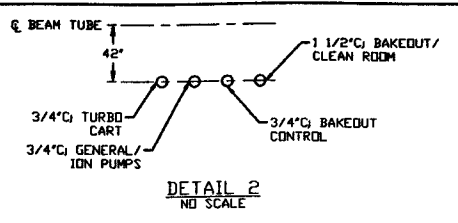
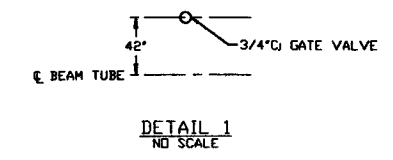
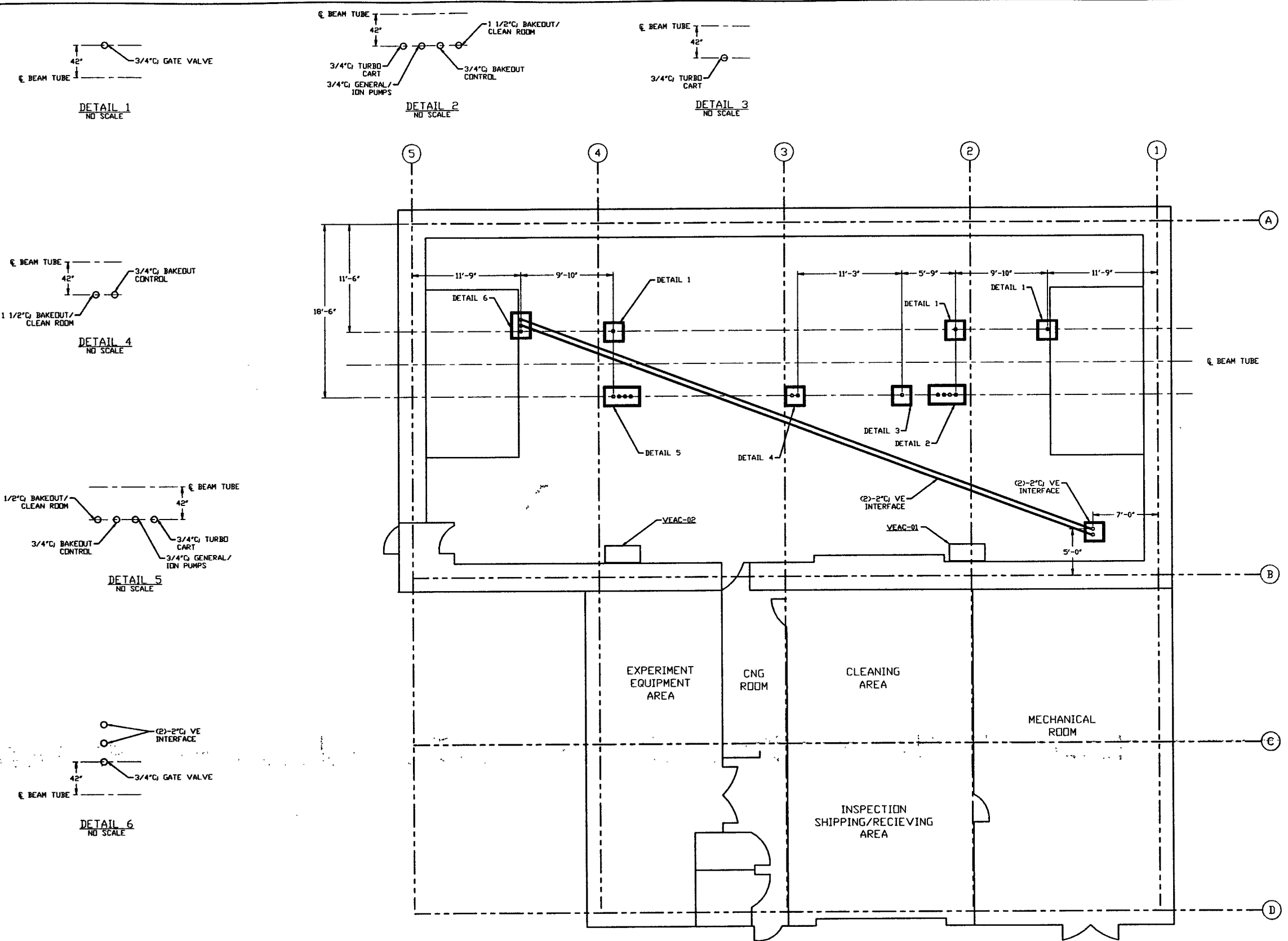


- NOTES:**
- 1) PROVIDE PULL TAPE IN EACH CONDUIT.
  - 2) ALL UNDERGROUND INSTALLATION AND DETAILS ARE BY OTHERS.
  - 3) POWER SOURCE SHALL BE AS FOLLOWS:
    - A) BAKEDOUT/CLEAN ROOM 480/277VAC
    - B) GATE VALVE 480/277VAC
    - C) GENERAL/ION PUMPS 120VAC
    - D) BAKEDOUT CONTROL 120VAC
    - E) TURBO CART 208/120VAC
  - 4) FOR EQUIPMENT POWER REQUIREMENTS, REFER TO PST DOCUMENT #V049-1-047.



**NOT FOR CONSTRUCTION**

- LEGEND:**
- VACUUM EQUIPMENT INTERFACE CONDUIT
  - POWER STATION LOCATION
  - STUB-UP LOCATIONS

LIGO-D960579-00-V

<p><b>PROPRIETARY AND CONFIDENTIAL</b></p> <p>THIS DOCUMENT CONTAINS PROPRIETARY INFORMATION BELONGING TO PROCESS SYSTEMS INTERNATIONAL, INC. OR ITS AFFILIATED COMPANIES AND SHALL BE USED ONLY FOR THE PURPOSE FOR WHICH IT WAS SUPPLIED. IT SHALL NOT BE COPIED, REPRODUCED OR OTHERWISE USED, NOR SHALL SUCH INFORMATION BE FURNISHED IN WHOLE OR IN PART TO OTHERS EXCEPT IN ACCORDANCE WITH THE TERMS OF ANY AGREEMENT UNDER WHICH IT WAS SUPPLIED OR WITH THE PRIOR WRITTEN CONSENT OF PROCESS SYSTEMS INTERNATIONAL, INC. AND SHALL BE RETURNED UPON REQUEST.</p>		<p><b>UNLESS OTHERWISE SPECIFIED</b></p> <p>DIMENSIONS ARE IN INCHES</p> <p>TOLERANCES:</p> <p>FUNCTIONAL &amp; FINISH APPROX 0.015" BOND 0.015" THIS PLACE SECOND &amp; ALL THREE PLACE DECIMALS &amp; ALL FINISHED SURFACE FINISH BUT REMOVE ALL BURRS</p>		<p>DO NOT SCALE THIS DRAWING</p>		<p>ISSUE FOR FDR</p>		<p>DATE: 04.26.96</p>		<p>DESN: 0129</p>		<p>SCALE: 3/16" = 1' - 0"</p>		<p>SHEET: 1 OF 1</p>	
DWG. NO.	DESCRIPTION	DWG. NO.	DESCRIPTION	REV	DESCRIPTION	CHKD	DRWN	DATE	DESN	SCALE	SHEET	REV.			

**PROCESS SYSTEMS INTERNATIONAL, INC.**  
 20 WALKUP DR. WESTBOROUGH, MASSACHUSETTS 01581 USA

**ELECTRICAL CONDUIT STUB-UP PLAN**  
 LIGO VACUUM EQUIPMENT  
 WASHINGTON SITE  
 LEFT MID STATION

CAD FILE: V0493205  
 SIZE: D  
 DWG. NO.: V049-3-205  
 REV: 0