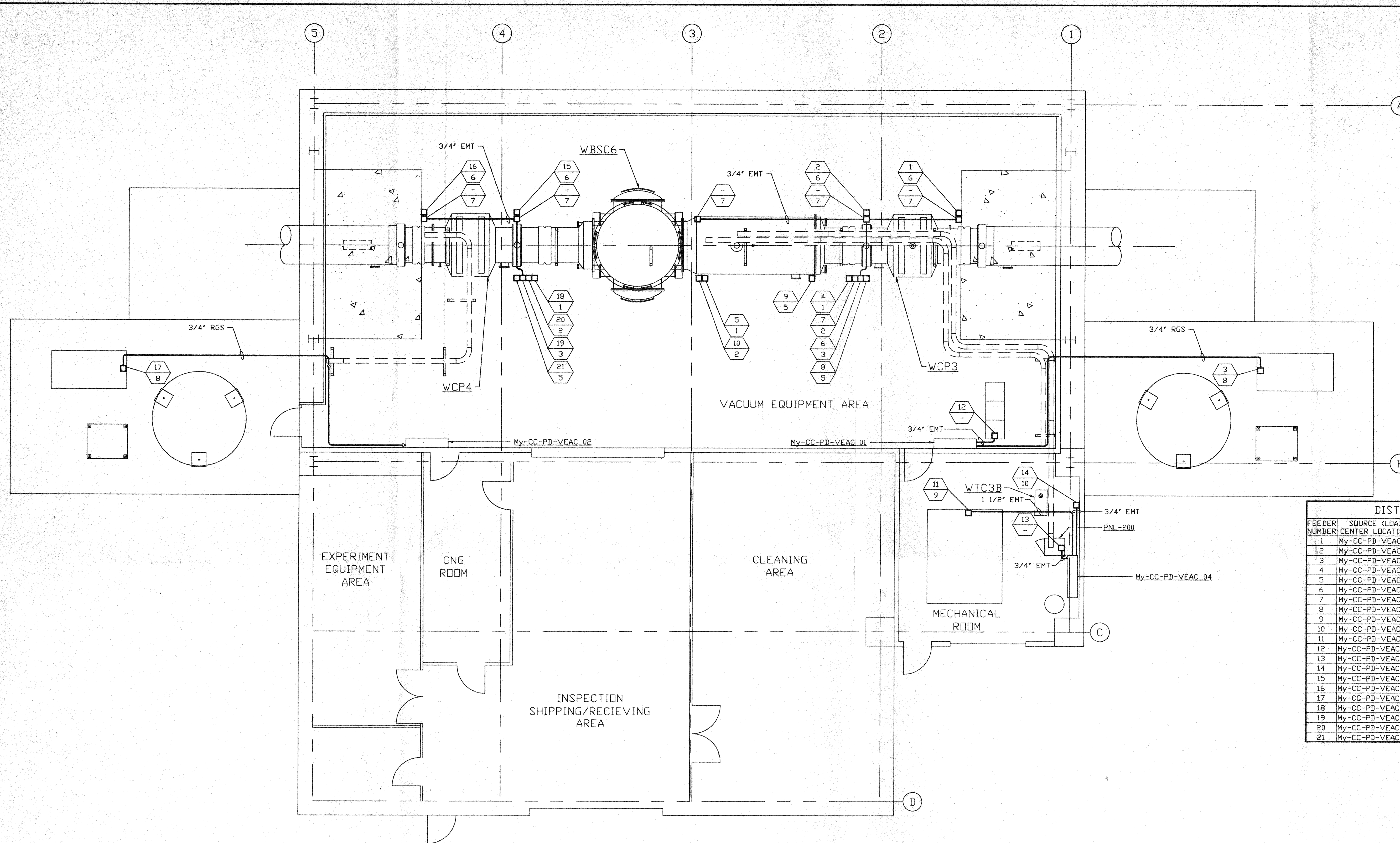


**NOTES:**

- 1) FOR ELECTRICAL INSTALLATION DETAILS SEE PSI DWG. V049-3-006.
- 2) CONDUIT IS SHOWN DIAGRAMMATICALLY AND SHALL BE FIELD VERIFIED SO AS TO OPTIMIZE SUPPORTING MEANS AND TO AVOID INTERFERENCES WITH PIPING SYSTEMS.
- 3) ALL RECEPTACLES SHALL BE IDENTIFIED WITH PANEL AND CKT. NUMBER.



DISTRIBUTION SYSTEM FEEDER SCHEDULE					
FEEDER NUMBER	SOURCE (LOAD CENTER LOCATION)	CKT #	EQUIPMENT SERVED	CONDUIT	FILL
1	My-CC-PD-VEAC_01	TBD	GATE VALVE WGV9	3/4"	3-#12, #10 GND
2	My-CC-PD-VEAC_01	TBD	GATE VALVE WGV10	3/4"	3-#12, #10 GND
3	My-CC-PD-VEAC_01	TBD	REGEN HEATER	3/4"	3-#10, #8 GND
4	My-CC-PD-VEAC_01	TBD	BAKEOUT/CLEAN ROOM	1 1/2"	4-#6, #8 GND
5	My-CC-PD-VEAC_01	TBD	BAKEOUT/CLEAN ROOM	1 1/2"	4-#6, #8 GND
6	My-CC-PD-VEAC_01	TBD	GENERAL/ION PUMP/AUX. TURBO	3/4"	2-#12, #12 GND
7	My-CC-PD-VEAC_01	TBD	BAKEOUT CONTROL	3/4"	2-#12, #12 GND
8	My-CC-PD-VEAC_01	TBD	TURBO PUMP	3/4"	4-#12, #10 GND
9	My-CC-PD-VEAC_01	TBD	TURBO PUMP	3/4"	4-#12, #10 GND
10	My-CC-PD-VEAC_01	TBD	BAKEOUT CONTROL	3/4"	2-#12, #12 GND
11	My-CC-PD-VEAC_01	TBD	AIR COMPRESSOR	1 1/2"	3-#4, #6 GND
12	My-CC-PD-VEAC_03	TBD	VE CONTROL TRANSFORMER	3/4"	2-#12, #12 GND
13	My-CC-PD-VEAC_04	TBD	2500 L/S ION PUMP	3/4"	2-#12, #12 GND
14	My-CC-PD-VEAC_04	TBD	TURBO BACKING PUMP	3/4"	4-#10, #8 GND
15	My-CC-PD-VEAC_02	TBD	GATE VALVE WGV11	3/4"	3-#12, #10 GND
16	My-CC-PD-VEAC_02	TBD	GATE VALVE WGV12	3/4"	3-#12, #10 GND
17	My-CC-PD-VEAC_02	TBD	REGEN HEATER	3/4"	3-#10, #8 GND
18	My-CC-PD-VEAC_02	TBD	BAKEOUT/CLEAN ROOM	1 1/2"	4-#6, #8 GND
19	My-CC-PD-VEAC_02	TBD	GENERAL/ION PUMP/AUX. TURBO	3/4"	2-#12, #12 GND
20	My-CC-PD-VEAC_02	TBD	BAKEOUT CONTROL	3/4"	2-#12, #12 GND
21	My-CC-PD-VEAC_02	TBD	TURBO PUMP	3/4"	4-#12, #10 GND

NOT FOR CONSTRUCTION

**LEGEND**

- ELECTRICAL DEVICE CONNECTION
- XX YY DEVICE CONNECTION IDENTIFIER
- XX = FEEDER NUMBER; SEE DISTRIBUTION SYSTEM FEEDER SCHEDULE THIS SHIT.
- YY = ELECTRICAL INSTALLATION DETAIL NUMBER; SEE NOTE 1
- CONDUIT; SEE PLAN FOR SIZE

APR 30 1996

D960578-00-V

**PROCESS SYSTEMS INTERNATIONAL INC.**  
20 WALKUP DR. WESTBOROUGH, MASSACHUSETTS 01581 USA

POWER PLAN  
LIGO VACUUM EQUIPMENT  
WASHINGTON SITE  
LEFT MID STATION

CAD FILE	SIZE	DWG. NO.	REV.
V0493204	D	V049-3-204	0
SCALE	SHEET		1 OF 1
3/16" = 1' - 0"			

**PROPRIETARY AND CONFIDENTIAL**

THIS DOCUMENT CONTAINS PROPRIETARY INFORMATION BELONGING TO PROCESS SYSTEMS INTERNATIONAL, INC. OR ITS AFFILIATED COMPANIES AND SHALL BE USED ONLY FOR THE PURPOSE FOR WHICH IT WAS SUPPLIED. IT SHALL NOT BE COPIED, REPRODUCED OR OTHERWISE USED, NOR SHALL SUCH INFORMATION BE FURNISHED IN WHOLE OR IN PART TO OTHERS EXCEPT IN ACCORDANCE WITH THE TERMS OF ANY AGREEMENT UNDER WHICH IT WAS SUPPLIED OR WITH THE PRIOR WRITTEN CONSENT OF PROCESS SYSTEMS INTERNATIONAL, INC. AND SHALL BE RETURNED UPON REQUEST.

DWG. NO.	DESCRIPTION	DWG. NO.	DESCRIPTION
V049-3-006	ELECTRICAL INSTALLATION DETAILS		
V049-3-005	ION PUMP CONTROLLER CABINET WIRING DIAGRAM		
V049-3-002	WASHINGTON OVERALL SITE PLAN		
V049-3-001	GENERAL NOTES & LEGEND		
REFERENCE DRAWINGS			

**UNLESS OTHERWISE SPECIFIED**

DIMENSIONS ARE IN INCHES  
TOLERANCES:  
FRACTIONAL ± ANGULAR/ARMACH ±0°-30' BEND ±2°  
TWO PLACE DECIMAL ±.01  
THREE PLACE DECIMAL ±.005  
FINISHED SURFACE RMS  
BREAK CORNERS IN OUT  
REMOVE ALL BURRS

DO NOT SCALE THIS DRAWING  
USED ON:  
NEXT ASS'Y:

REV	DESCRIPTION	ISSUE DESCRIPTION	CHKD	DRWN	DATE	DECD
0	ISSUE FOR FDR				04.26.96	0129