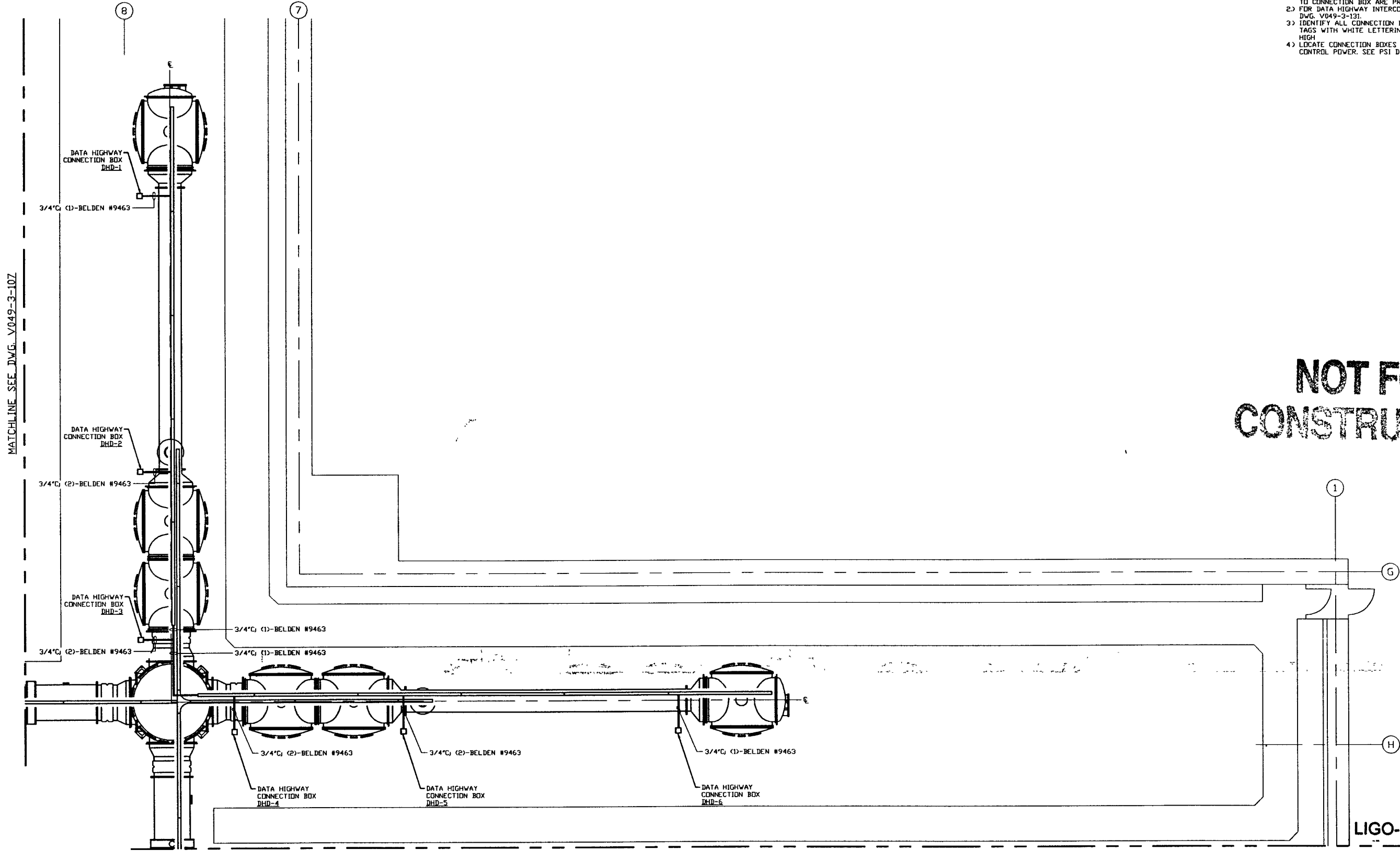


- NOTES:**
- DATA HIGHWAY EXTENSION CABLES FOR BAKEDOUT CART TO CONNECTION BOX ARE PROVIDED W/CART.
  - FOR DATA HIGHWAY INTERCONNECTING WIRING SEE DWG. V049-3-131.
  - IDENTIFY ALL CONNECTION BOXES WITH BLACK PHENOLIC TAGS WITH WHITE LETTERING. LETTERING SHALL BE 3/8" HIGH.
  - LOCATE CONNECTION BOXES ADJACENT TO BAKEDOUT CART CONTROL POWER. SEE PSI DWG. #V049-3-119

NOT FOR  
CONSTRUCTION



MATCHLINE SEE DWG. V049-3-107

MATCHLINE SEE DWG. V049-3-108

**LIGO-D960573-00-V**

<small>PROPRIETARY AND CONFIDENTIAL</small> <small>THIS DOCUMENT CONTAINS PROPRIETARY INFORMATION BELONGING TO PROCESS SYSTEMS INTERNATIONAL, INC. OR ITS AFFILIATED COMPANIES AND SHALL BE USED ONLY FOR THE PURPOSES FOR WHICH IT WAS SUPPLIED. IT SHALL NOT BE COPIED, REPRODUCED OR OTHERWISE USED FOR ANY OTHER PURPOSE WITHOUT THE WRITTEN CONSENT OF PROCESS SYSTEMS INTERNATIONAL, INC. AND SHALL BE RETURNED UPON REQUEST.</small>	V049-3-131	DATA HIGHWAY INTERCONNECTION DIAGRAM			<small>UNLESS OTHERWISE SPECIFIED DIMENSIONS ARE IN INCHES</small> <small>TOLERANCES:</small> <small>FUNCTIONAL &amp; APPROXIMATE ±.005</small> <small>FINISHED SURFACE ±.015</small> <small>REMOVE ALL BURRS</small> <small>DO NOT SCALE THIS DRAWING</small>	<table border="1"> <tr> <td>ISSUE DESCRIPTION</td> <td>0</td> <td>ISSUE FOR FDR</td> <td></td> <td></td> <td></td> <td></td> <td></td> <td></td> </tr> <tr> <td>USED ON</td> <td>REV</td> <td>DESCRIPTION</td> <td>CHKD</td> <td>DRWN</td> <td>DATE</td> <td>DECD</td> <td></td> <td></td> </tr> </table>	ISSUE DESCRIPTION	0	ISSUE FOR FDR							USED ON	REV	DESCRIPTION	CHKD	DRWN	DATE	DECD		
	ISSUE DESCRIPTION	0	ISSUE FOR FDR																					
	USED ON	REV	DESCRIPTION	CHKD			DRWN	DATE	DECD															
	V049-3-119	POWER PLAN DIAGONAL SECTION																						
V049-3-109	CABLE TRAY PLAN DIAGONAL SECTION																							
V049-3-002	WASHINGTON OVERALL SITE PLAN																							
V049-3-001	GENERAL NOTES & LEGEND																							
DWG. NO.	DESCRIPTION		DWG. NO.	DESCRIPTION	ISSUE DESCRIPTION																			
REFERENCE DRAWINGS																								
8	7	6	5	4	3	2	1																	

<b>PROCESS SYSTEMS INTERNATIONAL, INC.</b> <small>20 WALKUP DR. WESTBOROUGH, MASSACHUSETTS 01581 USA</small>			
<b>DATA HIGHWAY PLAN</b> <b>LIGO VACUUM EQUIPMENT</b> <b>WASHINGTON SITE</b> <b>DIAGONAL SECTION</b>			
CAR FILE V0493130	SIZE D	DWG. NO. V049-3-130	REV. 0
SCALE 3/16" = 1' - 0"	SHEET		1 OF 1