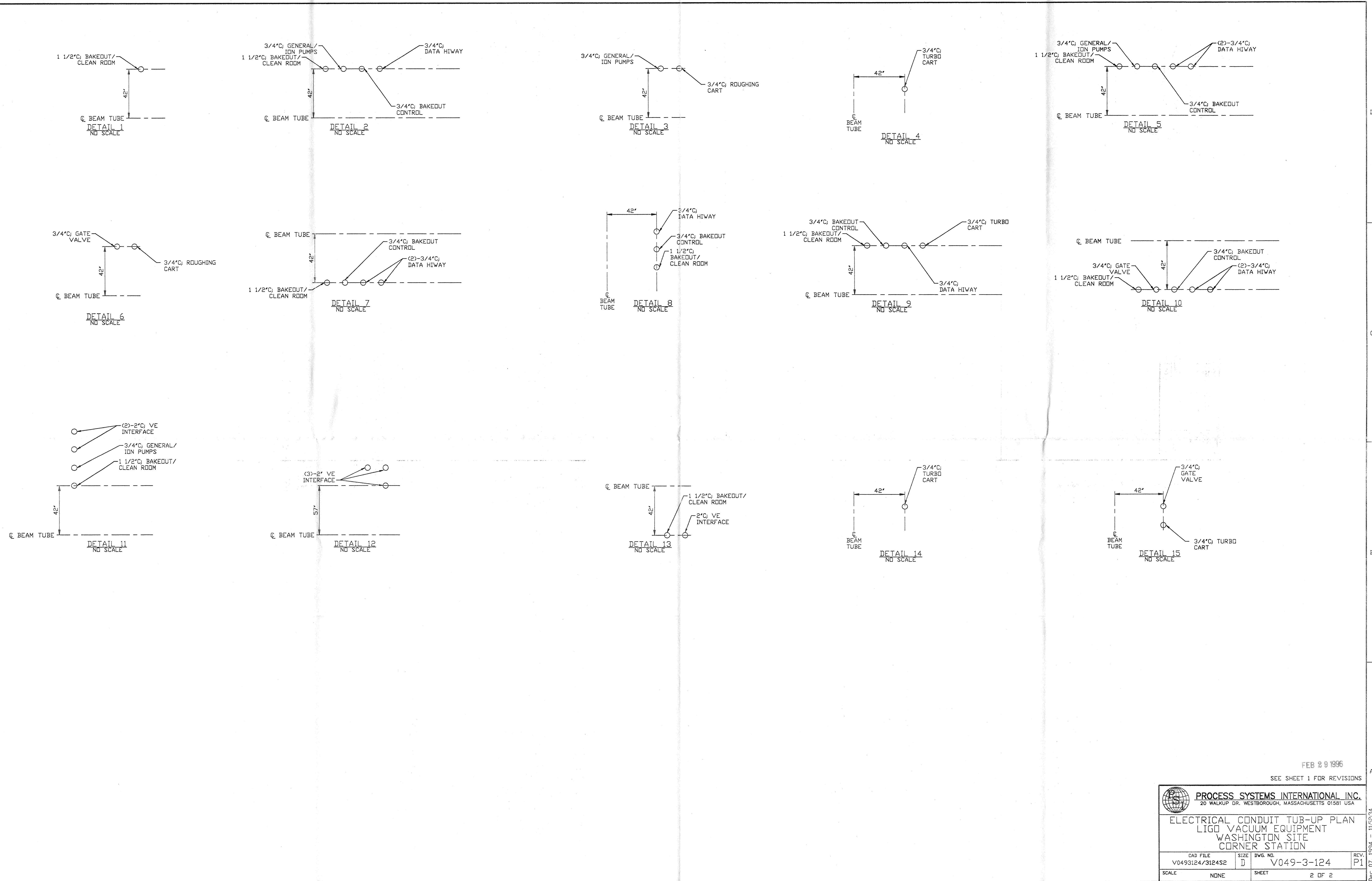


- NOTES:**
- 3/4" CONDUITS FOR DATA HIWAY ARE SHOWN DIAGRAMATICALLY.
 - PROVIDE PULL TAPE IN EACH CONDUIT.
 - ALL UNDERGROUND INSTALLATION AND DETAILS ARE BY OTHERS.
 - POWER SOURCE SHALL BE AS FOLLOWS:
 - A) BAKEDOUT/CLEAN ROOM 480/277VAC
 - B) ROUGHING CART 480/277VAC
 - C) GATE VALVE 480/277VAC
 - D) GENERAL/ION PUMPS 120VAC
 - E) BAKEDOUT CONTROL 120VAC
 - F) TURBO CART 208/120VAC
 - FOR EQUIPMENT POWER REQUIREMENTS, REFER TO PSI DOCUMENT #V049-1-047.
 - DATA HIWAY CONDUIT ARE INTERCONNECTED AS SHOWN.


- LEGEND:**
- VACUUM EQUIPMENT INTERFACE CONDUIT
 - BAKEDOUT SYSTEM DATA HIWAY CONDUIT
 - POWER STATION LOCATIONS
 - STUB-UP LOCATIONS

FEB 29 1996

<p>PROPRIETARY AND CONFIDENTIAL</p> <p>THIS DOCUMENT CONTAINS PROPRIETARY INFORMATION BELONGING TO PROCESS SYSTEMS INTERNATIONAL, INC. OR ITS AFFILIATED COMPANIES AND SHALL BE USED ONLY FOR THE PURPOSE FOR WHICH IT WAS SUPPLIED. IT SHALL NOT BE COPIED, REPRODUCED OR OTHERWISE USED, NER SHALL SUCH INFORMATION BE FURNISHED IN WHOLE OR IN PART TO OTHERS EXCEPT IN ACCORDANCE WITH THE TERMS OF ANY AGREEMENT UNDER WHICH IT WAS SUPPLIED OR WITH THE PRIOR WRITTEN CONSENT OF PROCESS SYSTEMS INTERNATIONAL, INC. AND SHALL BE RETURNED UPON REQUEST.</p>	<p>UNLESS OTHERWISE SPECIFIED DIMENSIONS ARE IN INCHES</p> <p>TOLERANCES: FRACTIONAL ± ANGULAR/MACH 10°-30° BEND ±2° TWO PLACE DECIMAL ± .01 THREE PLACE DECIMAL ± .005 FINISHED SURFACE RMS BREAK CORNERS IN OUT REMOVE ALL BURRS</p>	<p>DO NOT SCALE THIS DRAWING</p> <p>USED ON</p> <p>NEXT ASS'Y:</p>	<table border="1" style="width: 100%; border-collapse: collapse;"> <tr> <td style="width: 10%;">P1</td> <td>PRELIMINARY</td> </tr> <tr> <td>REV</td> <td>DESCRIPTION</td> </tr> <tr> <td>ISSUE</td> <td>DESCRIPTION</td> </tr> </table>	P1	PRELIMINARY	REV	DESCRIPTION	ISSUE	DESCRIPTION	<p>DATE</p> <p>02.29.96</p> <p>0074</p>	<p>CHKD</p> <p>DRWN</p> <p>DATE</p> <p>DED#</p>	<p>SCALE</p> <p>1" = 10'-0"</p> <p>SHEET</p> <p>1 OF 2</p>	<p>PROCESS SYSTEMS INTERNATIONAL, INC. 20 WALKUP DR. WESTBOROUGH, MASSACHUSETTS 01581 USA</p> <p>ELECTRICAL CONDUIT STUB-UP PLAN LIGO VACUUM EQUIPMENT WASHINGTON SITE CORNER STATION</p> <p>CAD FILE: V0493124\3124S1 SIZE: D DWG. NO.: V049-3-124 REV: P1</p>
P1	PRELIMINARY												
REV	DESCRIPTION												
ISSUE	DESCRIPTION												



FEB 29 1996
SEE SHEET 1 FOR REVISIONS

 PROCESS SYSTEMS INTERNATIONAL INC. 20 WALKUP DR. WESTBOROUGH, MASSACHUSETTS 01581 USA			
ELECTRICAL CONDUIT TUB-UP PLAN LIGO VACUUM EQUIPMENT WASHINGTON SITE CORNER STATION			
CAD FILE	SIZE	DWG. NO.	REV.
V0493124/3124S2	D	V049-3-124	P1
SCALE	NONE	SHEET	2 OF 2