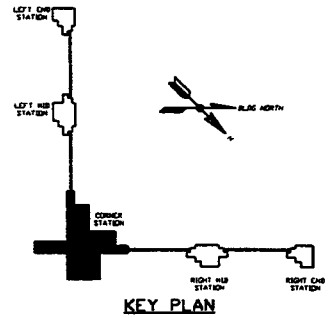
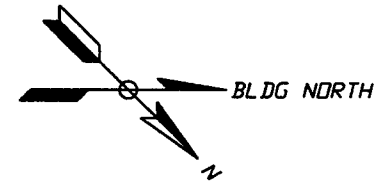


- NOTES:**
- 1) PROVIDE PULL TAPE IN EACH CONDUIT.
 - 2) ALL UNDERGROUND INSTALLATION AND DETAILS ARE BY OTHERS.
 - 3) POWER SOURCE SHALL BE AS FOLLOWS:
 - A) BAKEDOUT/CLEAN ROOM 480/277VAC
 - B) ROUGHING CART 480/277VAC
 - C) GATE VALVE 480/277VAC
 - D) GENERAL/TION PUMPS 120VAC
 - E) BAKEDOUT CONTROL 120VAC
 - F) TURBO CART 208/120VAC
 - 4) FOR EQUIPMENT POWER REQUIREMENTS, REFER TO PSI DOCUMENT #V049-1-047.
 - 5) FOR GENERAL NOTES & LEGEND SEE PSI DWG. #V049-3-001 SHT. 1.
 - 6) FOR LIST OF CIVIL CONTRACTOR REFERENCE DWGS. WITH CURRENT REVISIONS SEE PSI DWG. #V049-3-001 SHT. 2.



PROPRIETARY AND CONFIDENTIAL
 THIS DOCUMENT CONTAINS PROPRIETARY INFORMATION BELONGING TO PROCESS SYSTEMS INTERNATIONAL, INC. OR ITS AFFILIATED COMPANIES AND SHALL BE USED ONLY FOR THE PURPOSE FOR WHICH IT WAS SUPPLIED. IT SHALL NOT BE COPIED, REPRODUCED OR OTHERWISE USED, NOR SHALL SUCH INFORMATION BE FURNISHED IN WHOLE OR IN PART TO OTHERS EXCEPT BY ACCORDANCE WITH THE TERMS OF ANY AGREEMENT UNDER WHICH IT WAS SUPPLIED OR WITH THE PRIOR WRITTEN CONSENT OF PROCESS SYSTEMS INTERNATIONAL, INC. AND SHALL BE RETURNED UPON REQUEST.

DWG. NO.	DESCRIPTION	DWG. NO.	DESCRIPTION

UNLESS OTHERWISE SPECIFIED DIMENSIONS ARE IN INCHES
 TOLERANCES:
 FRACTIONAL: ± ANGULAR: ±
 TWO PLACE DECIMAL: ± THREE PLACE DECIMAL: ±
 FINISHED SURFACE: ± BREAK CORNERS: R= OUT- REMOVE ALL BURNS
 DO NOT SCALE THIS DRAWING
 USED ON: NEXT ASSY:

REV	DESCRIPTION	CHKD	DRWN	DATE	DESN
3	ISSUE FOR CONSTRUCTION				
2	ISSUE FOR FOR UPDATE & BID				
1	ISSUE FOR INSTALLATION				
0	ISSUE FOR FOR				

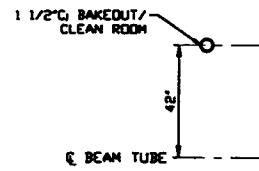
PROCESS SYSTEMS INTERNATIONAL, INC.
 30 WALSH DR. WESTBOROUGH, MASSACHUSETTS 01581 USA

ELECTRICAL CONDUIT STUB-UP PLAN
 LIGO VACUUM EQUIPMENT
 WASHINGTON SITE
 CORNER STATION

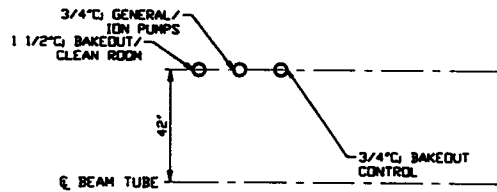
CAD FILE: V0493124\312451
 SIZE: D
 DWG. NO.: V049-3-124
 SHEET: 1 OF 2

SCALE: 1" = 10'-0"

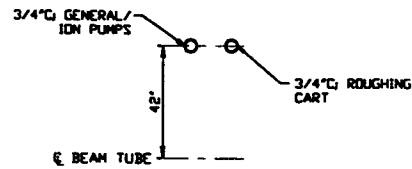
LIGO-D960568-03-V



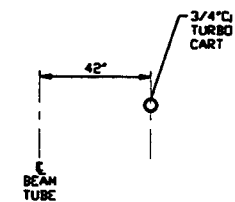
DETAIL 1 REF.
NO SCALE --- V049-3-124 SHT. 1



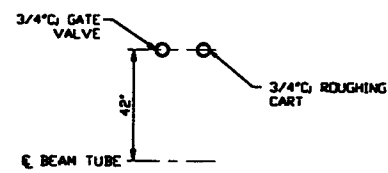
DETAIL 2 REF.
NO SCALE --- V049-3-124 SHT. 1



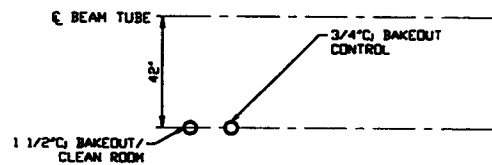
DETAIL 3 REF.
NO SCALE --- V049-3-124 SHT. 1



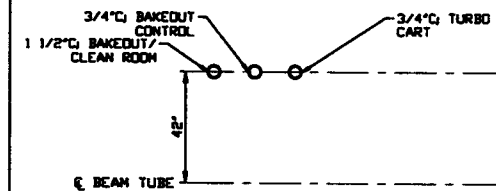
DETAIL 4 REF.
NO SCALE --- V049-3-124 SHT. 1



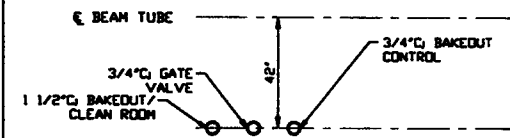
DETAIL 6 REF.
NO SCALE --- V049-3-124 SHT. 1



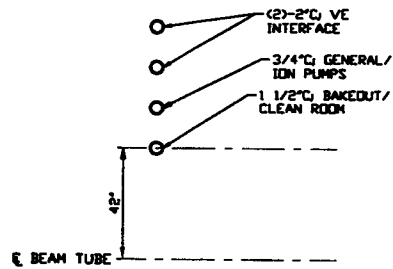
DETAIL 7 REF.
NO SCALE --- V049-3-124 SHT. 1



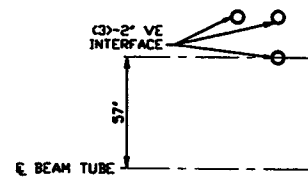
DETAIL 9 REF.
NO SCALE --- V049-3-124 SHT. 1



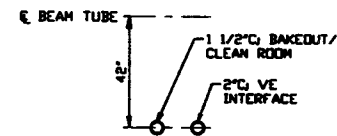
DETAIL 10 REF.
NO SCALE --- V049-3-124 SHT. 1



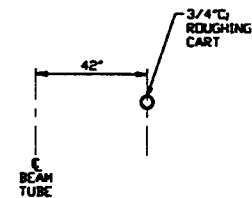
DETAIL 11 REF.
NO SCALE --- V049-3-124 SHT. 1



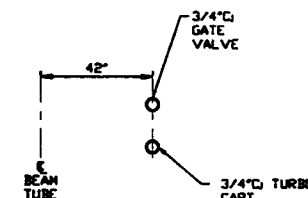
DETAIL 12 REF.
NO SCALE --- V049-3-124 SHT. 1



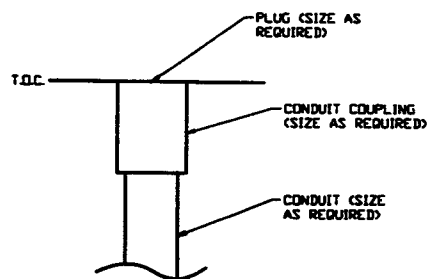
DETAIL 13 REF.
NO SCALE --- V049-3-124 SHT. 1



DETAIL 14 REF.
NO SCALE --- V049-3-124 SHT. 1



DETAIL 15 REF.
NO SCALE --- V049-3-124 SHT. 1



DETAIL 16 REF.
NO SCALE --- V049-3-124 SHT. 1

SEE SHEET 1 FOR REVISIONS

PROCESS SYSTEMS INTERNATIONAL INC. 20 WALWUP DR. WESTBOROUGH, MASSACHUSETTS 01581 USA			
ELECTRICAL CONDUIT STUB-UP PLAN LIGO VACUUM EQUIPMENT WASHINGTON SITE CORNER STATION			
CAD FILE V0493124/3124S2	SIZE D	DWG. NO. V049-3-124	REV. 3
SCALE NONE	SHEET 2 OF 2		