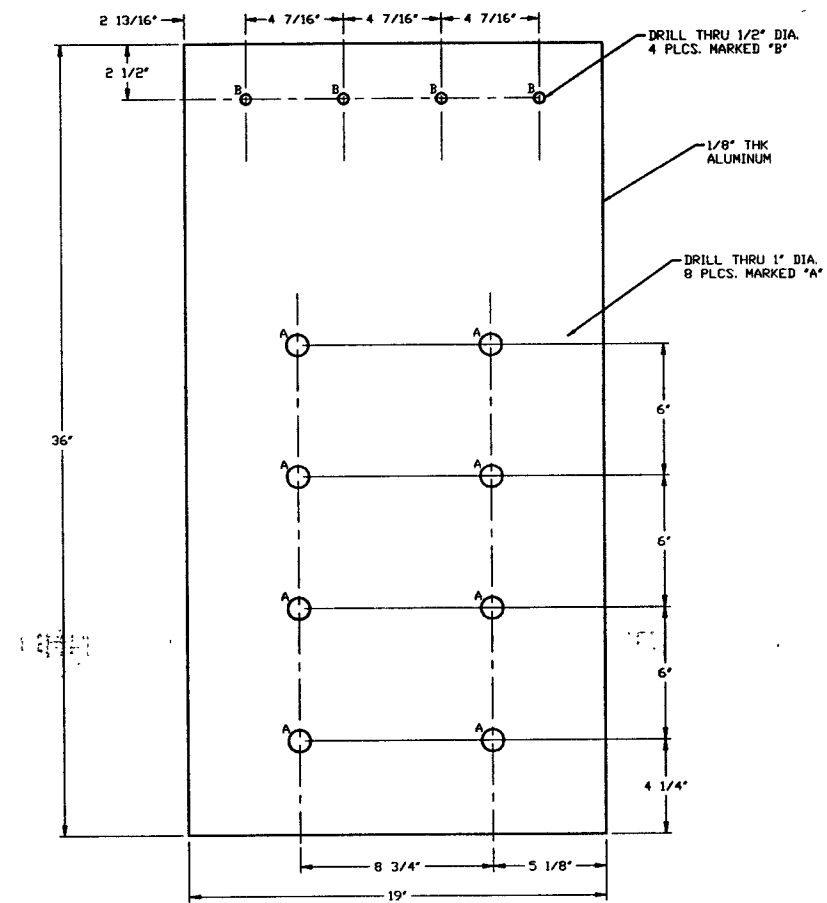



SECTION A-A



DETAIL 1

**NOT FOR  
CONSTRUCTION**

SEE SHEET 1 FOR REVISIONS

 <b>PROCESS SYSTEMS INTERNATIONAL INC.</b> 20 WALLOP DR. WESTBOROUGH, MASSACHUSETTS 01581 USA			
<b>PNL-100A &amp; PNL-100B ASSEMBLY</b> <b>LIGO VACUUM EQUIPMENT</b> <b>WASHINGTON SITE</b> <b>CORNER STATION</b>			
CAD FILE V0493121\3121S2	SIZE D	DWG. NO. V049-3-121	REV. 0
SCALE 1/4" = 1"	SHEET 2 OF 2		