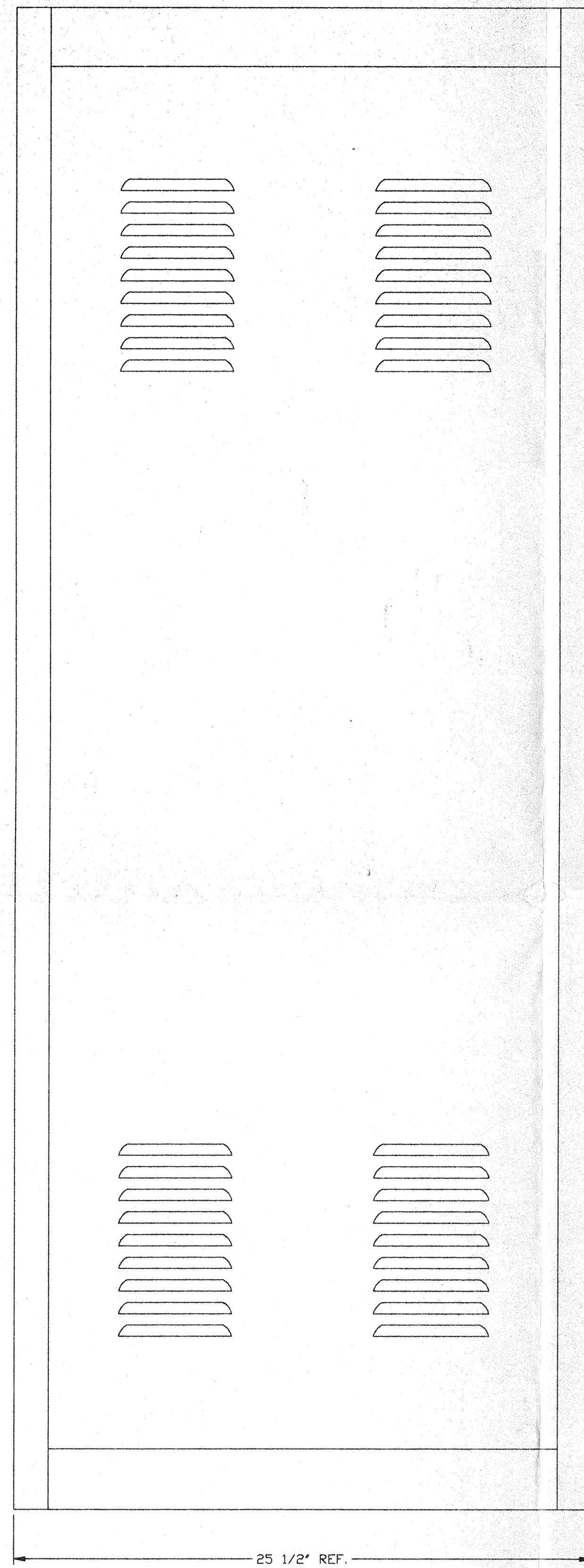
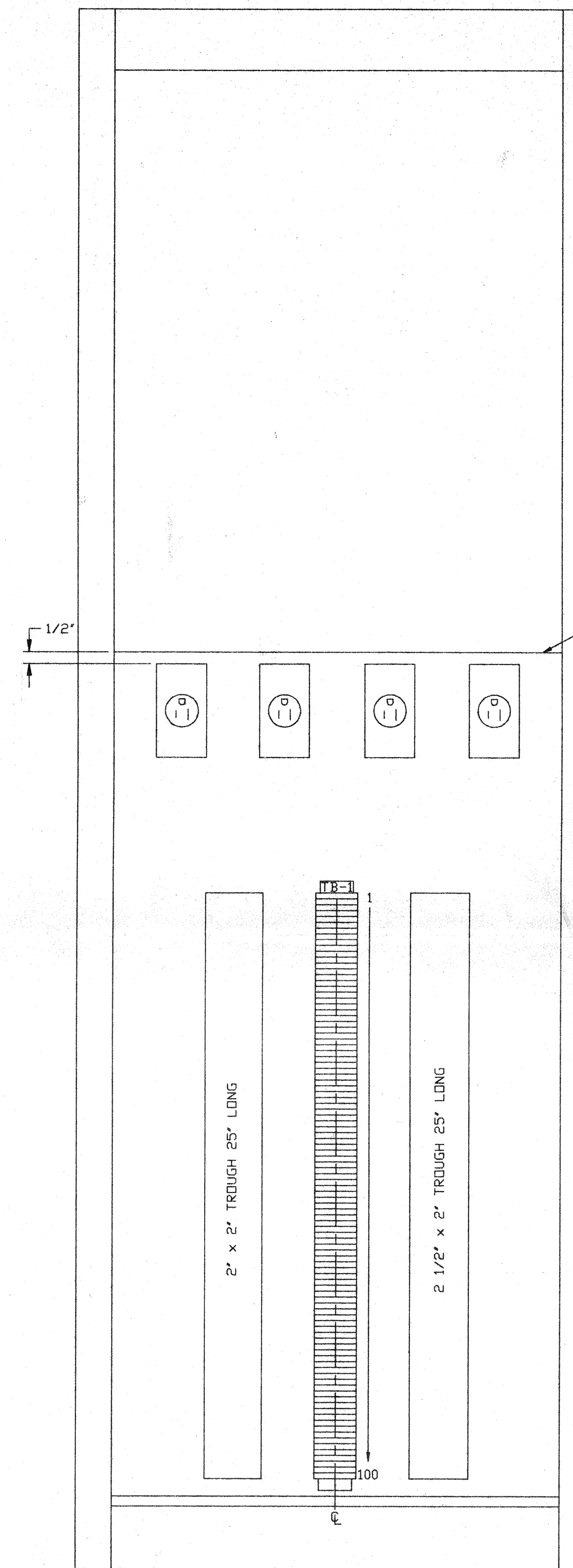


FRONT
SHOWN WITH DOOR REMOVED



SIDE



BACK
SHOWN WITH DOOR REMOVED

D960565-00-V

PROPRIETARY AND CONFIDENTIAL
THIS DOCUMENT CONTAINS PROPRIETARY INFORMATION BELONGING TO PROCESS SYSTEMS INTERNATIONAL, INC. OR ITS AFFILIATED COMPANIES AND SHALL BE USED ONLY FOR THE PURPOSE FOR WHICH IT WAS SUPPLIED. IT SHALL NOT BE COPIED, REPRODUCED OR OTHERWISE USED, NOR SHALL SUCH INFORMATION BE FURNISHED IN WHOLE OR IN PART TO OTHERS EXCEPT IN ACCORDANCE WITH THE TERMS OF ANY AGREEMENT UNDER WHICH IT WAS SUPPLIED OR WITH THE PRIOR WRITTEN CONSENT OF PROCESS SYSTEMS INTERNATIONAL, INC. AND SHALL BE RETURNED UPON REQUEST.

DWG. NO.	DESCRIPTION	DWG. NO.	DESCRIPTION
	REFERENCE DRAWINGS		

UNLESS OTHERWISE SPECIFIED
DIMENSIONS ARE IN INCHES
TOLERANCES:
FRACTIONAL ±
ANGULAR MACH ±0°-30' BEND ±2°
TWO PLACE DECIMAL ±.01
THREE PLACE DECIMAL ±.005
FINISHED SURFACE RMS
BREAK CORNERS IN
REMOVE ALL BURRS

DO NOT SCALE THIS DRAWING 0
USED ON: REV
NEXT ASS'Y:

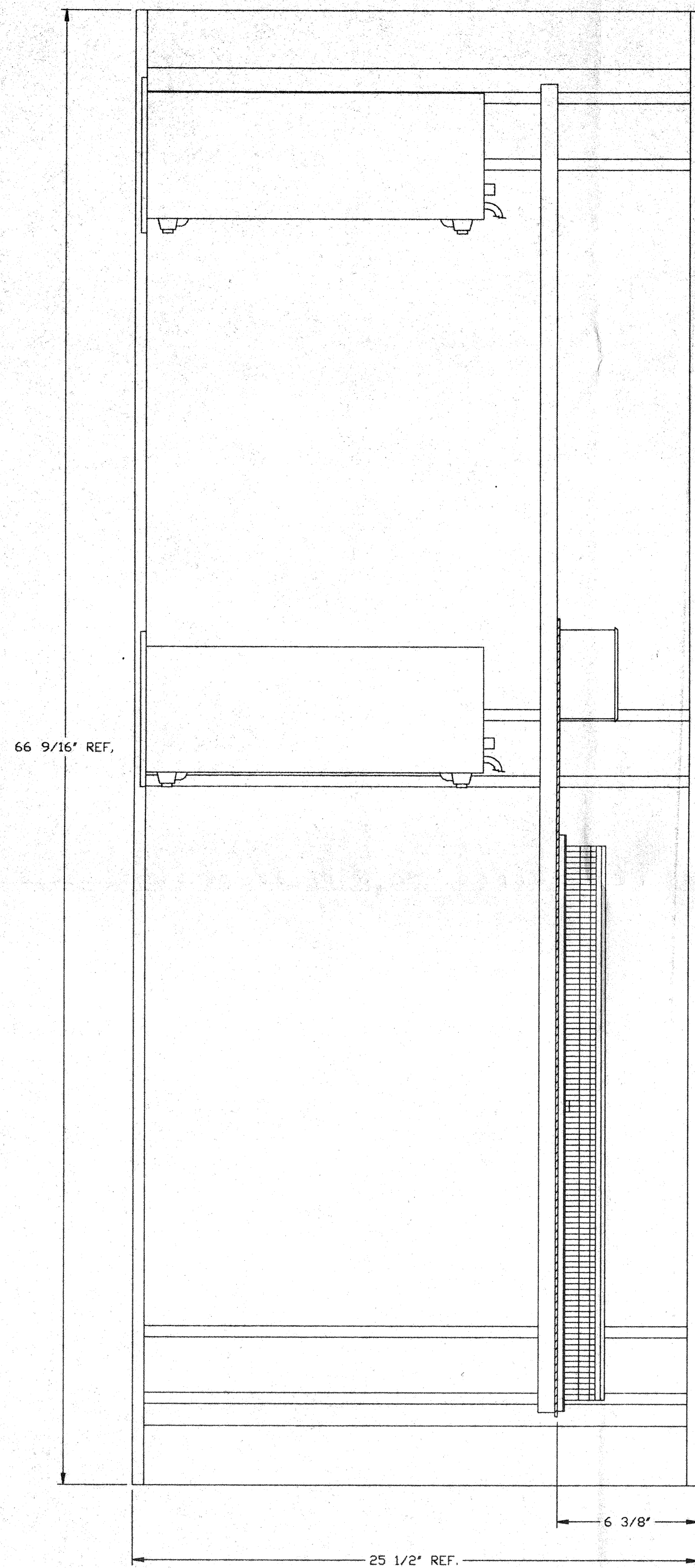
REV	DESCRIPTION	CHKD	DRWN	DATE	DEC#
0	ISSUE FOR FDR	Dwa	FMS	04.26.96	0129

PROCESS SYSTEMS INTERNATIONAL INC.
20 WALKUP DR. WESTBOROUGH, MASSACHUSETTS 01581 USA

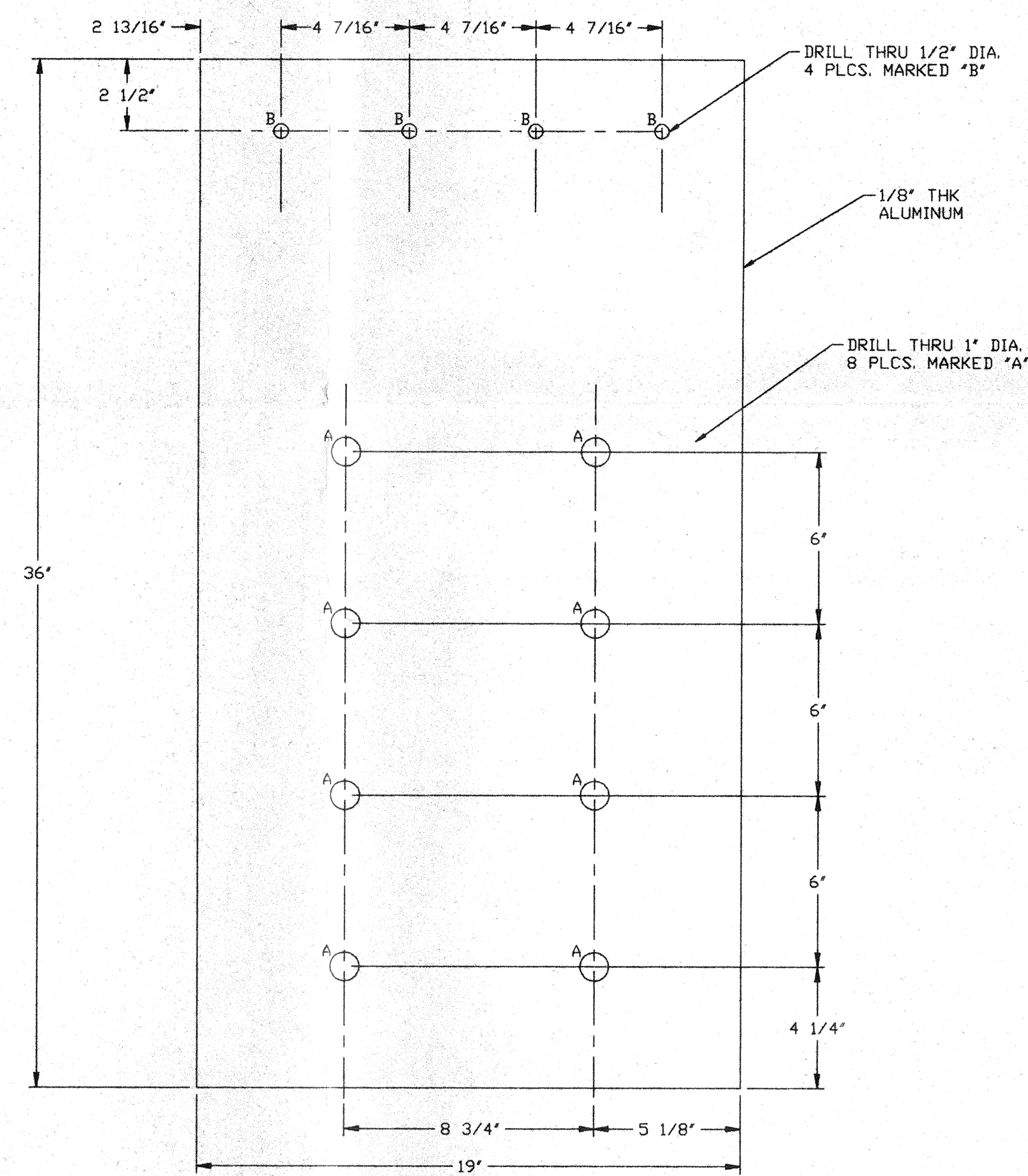
PNL-100A & PNL-100B ASSEMBLY
LIGO VACUUM EQUIPMENT
WASHINGTON SITE
CORNER STATION

CAD FILE: V0493121\3121S1
SIZE: D
DWG. NO.: V049-3-121
SCALE: 1/4" = 1"
SHEET: 1 OF 2

APR 30 1996



SECTION A-A



DETAIL 1

NOT FOR
CONSTRUCTION

APR 30 1996

0960565-00-V SEE SHEET 1 FOR REVISIONS

PROCESS SYSTEMS INTERNATIONAL INC.
20 WALKUP DR. WESTBOROUGH, MASSACHUSETTS 01581 USA

PNL-100A & PNL-100B ASSEMBLY
LIGD VACUUM EQUIPMENT
WASHINGTON SITE
CORNER STATION

CAD FILE V0493121\3121S2	SIZE D	DWG NO. V049-3-121	REV. 0
SCALE 1/4" = 1"		SHEET 2 OF 2	

8

7

6

5

4

3

2

1