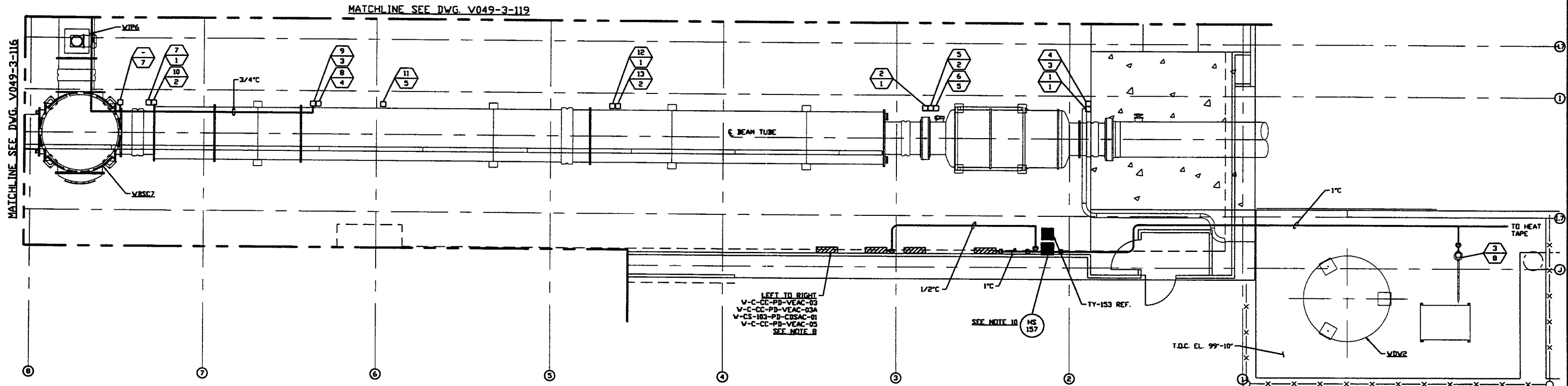


- NOTES:**
- 1) FOR ELECTRICAL INSTALLATION DETAILS SEE PSI DWG. V049-3-006.
 - 2) CONDUIT IS SHOWN DIAGRAMMATICALLY AND SHALL BE FIELD VERIFIED SO AS TO OPTIMIZE SUPPORTING MEANS AND TO AVOID INTERFERENCES WITH PIPING SYSTEMS.
 - 3) ALL RECEPTACLES SHALL BE IDENTIFIED WITH PANEL AND CKT. NUMBER.
 - 4) EACH 3Ø CIRCUIT SHALL HAVE DEDICATED NEUTRAL AND GROUND.
 - 5) FOR GENERAL NOTES & LEGEND SEE PSI DWG. #V049-3-001 SHT. 1.
 - 6) FOR LIST OF CIVIL CONTRACTOR REGERENCE DWGS. WITH CURRENT REVISIONS SEE PSI DWG. #V049-3-001 SHT. 2.
 - 7) FOR DISTRIBUTION SYSTEM FEEDER SCHEDULE SEE PSI DWG. #V049-3-120.
 - 8) POWER DISTRIBUTION PANELS ARE FURNISHED BY OTHERS.
 - 9) AT INDOOR INSTALLATIONS, CONDUIT SHALL BE ENT. AT OUTDOOR INSTALLATIONS, CONDUIT SHALL BE IMC.
 - 10) LOCATE HS-157 ADJACENT TO TY-153. SEE DETAIL 3 ON PSI DWG. V049-3-006 FOR INSTALLATION.



RIGHT BEAM MANIFOLD PLAN @ EL. 100'-0"

<p>PROPRIETARY AND CONFIDENTIAL</p> <p>THIS DOCUMENT CONTAINS PROPRIETARY INFORMATION BELONGING TO PROCESS SYSTEMS INTERNATIONAL, INC. OR ITS AFFILIATED COMPANIES AND SHALL BE USED ONLY FOR THE PURPOSE FOR WHICH IT WAS SUPPLIED. IT SHALL NOT BE COPIED, REPRODUCED OR OTHERWISE USED FOR ANY OTHER PURPOSE WITHOUT THE WRITTEN CONSENT OF PROCESS SYSTEMS INTERNATIONAL, INC. AND SHALL BE RETURNED UPON REQUEST.</p>	V049-3-116	POWER PLAN WASHINGTON VERTEX SECTION		
	V049-3-006	ELECTRICAL INSTALLATION DETAILS	WA-E-121	CORNER STATION LVEA CDSAC PANEL SCHED. (PARSONS)
	V049-3-005	ION PUMP CONTROLLER CABINET WIRING DIAGRAM	WA-E-120	CORNER STATION LVEA VEAC PANEL SCHED. (PARSONS)
	V049-3-002	WASHINGTON OVERALL SITE PLAN	WA-E-119	CORNER STATION LVEA VEAC PANEL SCHED. (PARSONS)
	V049-3-001	GENERAL NOTES & LEGEND	WA-E-118	CORNER STATION LVEA VEAC PANEL SCHED. (PARSONS)
	V049-0-006	P & I D BOX CRYOPUMP	V049-3-119	POWER PLAN WASHINGTON DIAGONAL SECTION
DWG. NO.	DESCRIPTION	DWG. NO.	DESCRIPTION	

UNLESS OTHERWISE SPECIFIED DIMENSIONS ARE IN INCHES																				
TOLERANCES:																				
FRACTIONAL:																				
ANGULAR APPROX 30°-30' BOTH 45° TWO PLACE DECIMAL & 90° THREE PLACE DECIMAL & 90° FINISHED SURFACE DIMS BREAK CORNERS IN OUT REMOVE ALL BURRS																				
DO NOT SCALE THIS DRAWING																				
USED ON:	REV	DESCRIPTION																		
NEXT ASSY:																				

PROCESS SYSTEMS INTERNATIONAL, INC.
 20 WALRUP DR. WESTBOROUGH, MASSACHUSETTS 01581 USA

**POWER PLAN
 LIGO VACUUM EQUIPMENT
 WASHINGTON SITE
 RIGHT BEAM MANIFOLD**

CAR FILE: V0493118
 SIZE: D
 DWG. NO.: V049-3-118
 REV: 2

SCALE: 3/16" = 1' - 0"
 SHEET: 1 OF 1