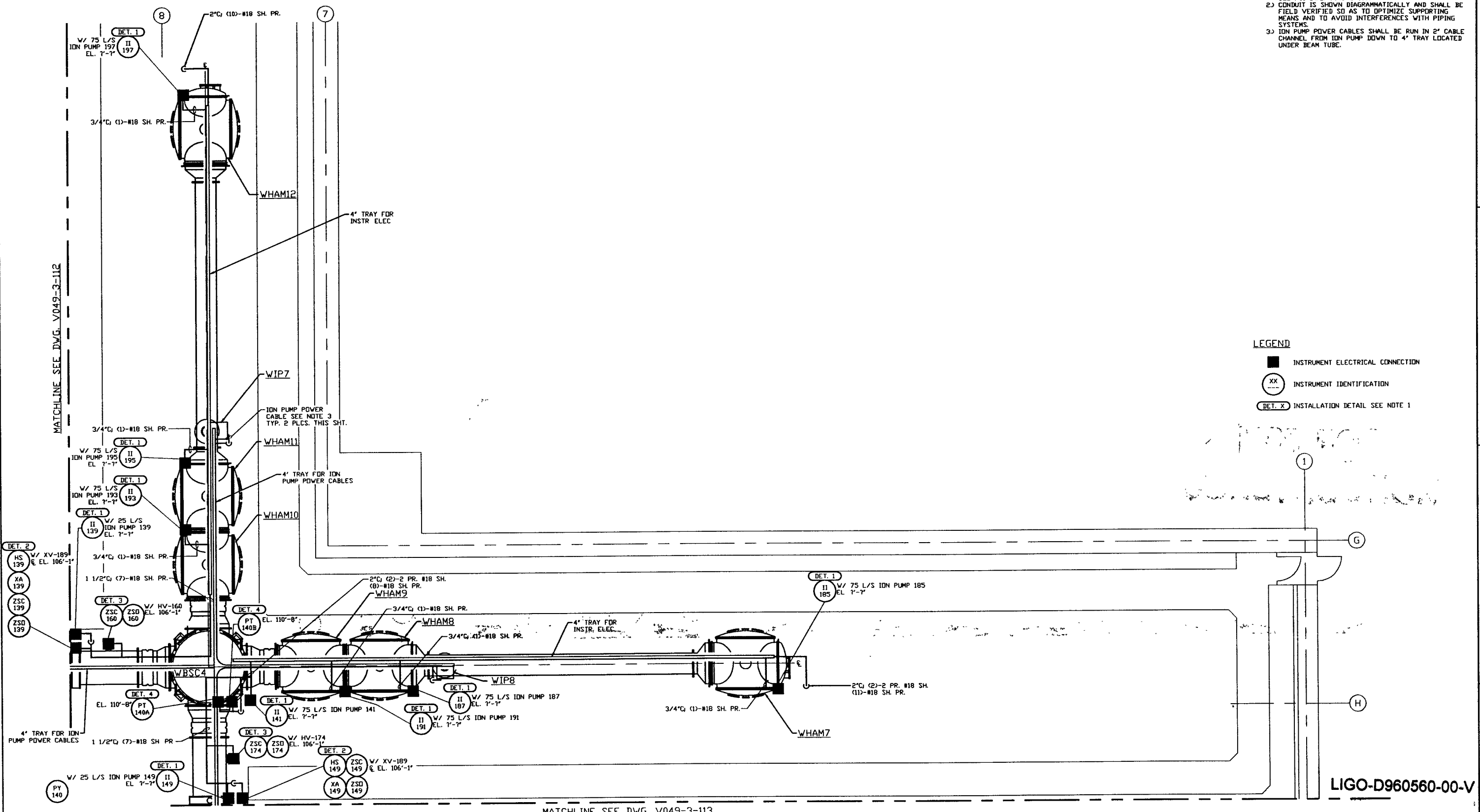


NOTES:

- FOR INSTRUMENT ELECTRICAL INSTALLATION DETAILS SEE PSI DWG. V049-3-007.
- CONDUIT IS SHOWN DIAGRAMMATICALLY AND SHALL BE FIELD VERIFIED SO AS TO OPTIMIZE SUPPORTING MEANS AND TO AVOID INTERFERENCES WITH PIPING SYSTEMS.
- ION PUMP POWER CABLES SHALL BE RUN IN 2" CABLE CHANNEL FROM ION PUMP DOWN TO 4" TRAY LOCATED UNDER BEAM TUBE.

LEGEND

- INSTRUMENT ELECTRICAL CONNECTION
- ⊗ INSTRUMENT IDENTIFICATION
- (DET. X) INSTALLATION DETAIL SEE NOTE 1



LIGO-D960560-00-V

DWG. NO.	DESCRIPTION	DWG. NO.	DESCRIPTION
V049-3-112	INSTR. ELEC. PLAN WASHINGTON LEFT BEAM MANIFOLD	V049-3-123	CDS INTERFACE DIAGRAM
V049-3-104	INSTRUMENT PLAN WASHINGTON DIAGONAL SECTION	V049-3-113	INSTR. ELEC. PLAN WASHINGTON RIGHT BEAM MANIFOLD
V049-3-007	INSTRUMENT ELECTRICAL INSTALLATION DETAILS		
V049-3-002	WASHINGTON OVERALL SITE PLAN		
V049-3-001	GENERAL NOTES & LEGEND		
V049-0-014	P & I D WASHINGTON DIAGONAL SECTION		

REV	DESCRIPTION	CHKD	DRWN	DATE	DCDR
0	ISSUE FOR FDR			04.26.96	0129

PROCESS SYSTEMS INTERNATIONAL INC.
 20 WALKUP DR. WESTBOROUGH, MASSACHUSETTS 01581 USA

**INSTRUMENT ELECTRICAL PLAN
 LIGO VACUUM EQUIPMENT
 WASHINGTON SITE
 DIAGONAL SECTION**

CAD FILE: V0493114
 SIZE: D
 DWG. NO.: V049-3-114
 REV: 0

SCALE: 3/16" = 1' - 0"
 SHEET: 1 OF 1