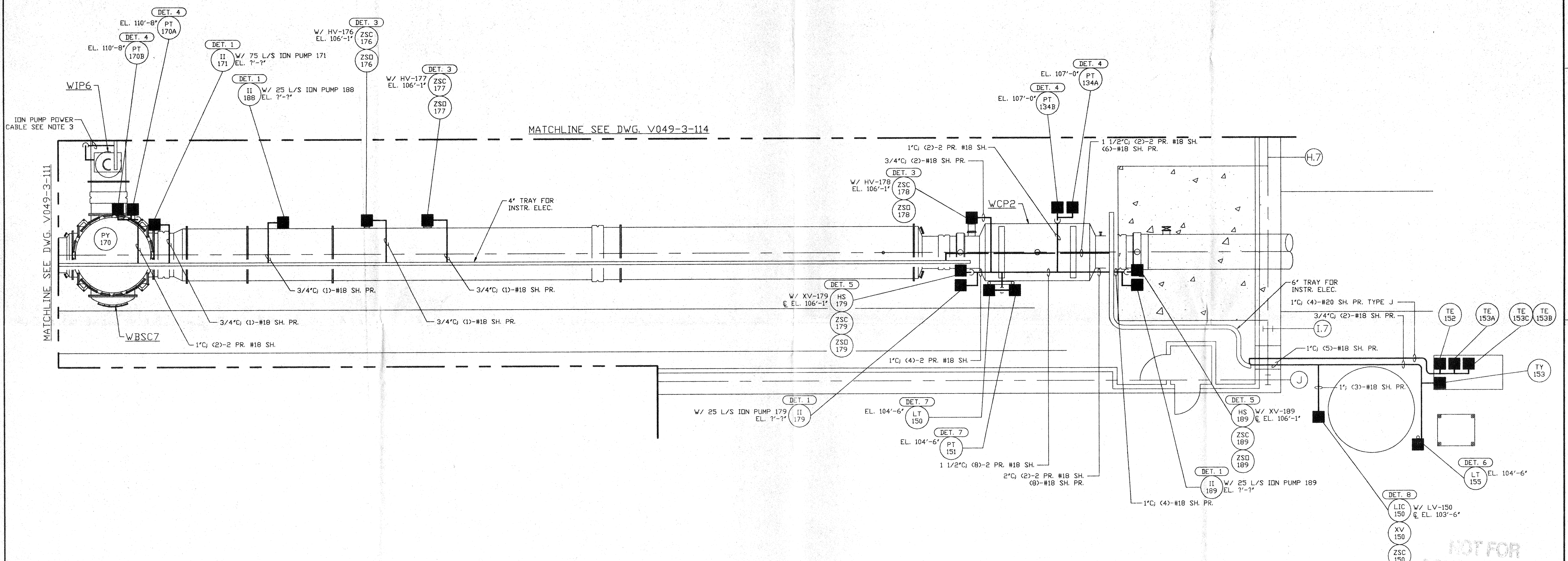


NOTES:

- 1.) FOR INSTRUMENT ELECTRICAL INSTALLATION DETAILS SEE PSI DWG. V049-3-007.
- 2.) CONDUIT IS SHOWN DIAGRAMMATICALLY AND SHALL BE FIELD VERIFIED SO AS TO OPTIMIZE SUPPORTING MEANS AND TO AVOID INTERFERENCES WITH PIPING SYSTEMS.
- 3.) ION PUMP POWER CABLES SHALL BE RUN IN 2" CABLE CHANNEL FROM ION PUMP DOWN TO 4' TRAY LOCATED UNDER BEAM TUBE.



LEGEND

- INSTRUMENT ELECTRICAL CONNECTION
- XX --- INSTRUMENT IDENTIFICATION
- DET. X INSTALLATION DETAIL SEE NOTE 1

NOT FOR CONSTRUCTION

APR 30 1996

D960559-00-V

PROPRIETARY AND CONFIDENTIAL THIS DOCUMENT CONTAINS PROPRIETARY INFORMATION BELONGING TO PROCESS SYSTEMS INTERNATIONAL, INC. OR ITS AFFILIATED COMPANIES AND SHALL BE USED ONLY FOR THE PURPOSE FOR WHICH IT WAS SUPPLIED. IT SHALL NOT BE COPIED, REPRODUCED OR OTHERWISE USED, NOR SHALL SUCH INFORMATION BE FURNISHED IN WHOLE OR IN PART TO OTHERS EXCEPT IN ACCORDANCE WITH THE TERMS OF ANY AGREEMENT UNDER WHICH IT WAS SUPPLIED OR WITH THE PRIOR WRITTEN CONSENT OF PROCESS SYSTEMS INTERNATIONAL, INC. AND SHALL BE RETURNED UPON REQUEST.	V049-3-111 INSTR. ELEC. PLAN WASHINGTON VERTEX SECTION V049-3-103 INSTRUMENT PLAN WASHINGTON RIGHT BEAM MANIFOLD V049-3-007 INSTRUMENT ELECTRICAL INSTALLATION DETAILS V049-3-002 WASHINGTON OVERALL SITE PLAN V049-3-001 GENERAL NOTES & LEGEND V049-0-015 P & I D WASHINGTON RIGHT BEAM MANIFOLD	V049-3-123 CDS INTERFACE DIAGRAM V049-3-114 INSTR. ELEC. PLAN WASHINGTON DIAGONAL SECTION	UNLESS OTHERWISE SPECIFIED DIMENSIONS ARE IN INCHES TOLERANCES: FRACTIONAL: ± ANGULAR APPROX 40°-30° BEND 42° THREE PLACE DECIMAL ± .005 FINISHED SURFACE RMS BREAK CORNERS IN OUT REMOVE ALL BURRS	DO NOT SCALE THIS DRAWING USED ON: REV DESCRIPTION NEXT ASS'Y:	0 ISSUE FOR FDR 0129 04.26.96 0129 3/16" = 1' - 0" SHEET 1 OF 1	PROCESS SYSTEMS INTERNATIONAL, INC. 20 WALKUP DR. WESTBOROUGH, MASSACHUSETTS 01581 USA INSTRUMENT ELECTRICAL PLAN LIGO VACUUM EQUIPMENT WASHINGTON SITE RIGHT BEAM MANIFOLD CAD FILE V0493113 SIZE D DWG. NO. V049-3-113 REV. 0
---	---	--	---	--	--	--