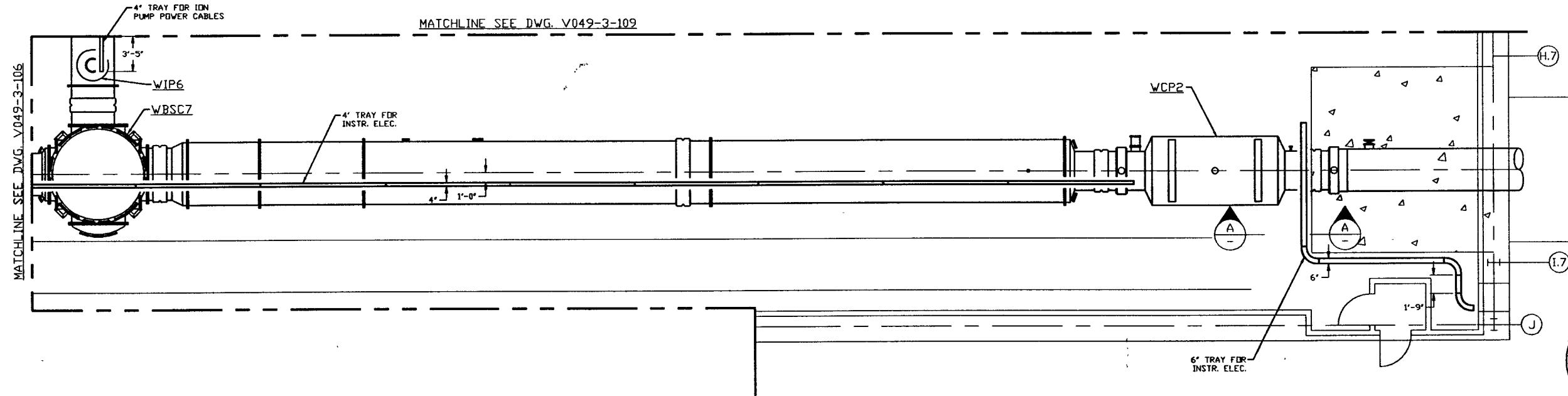
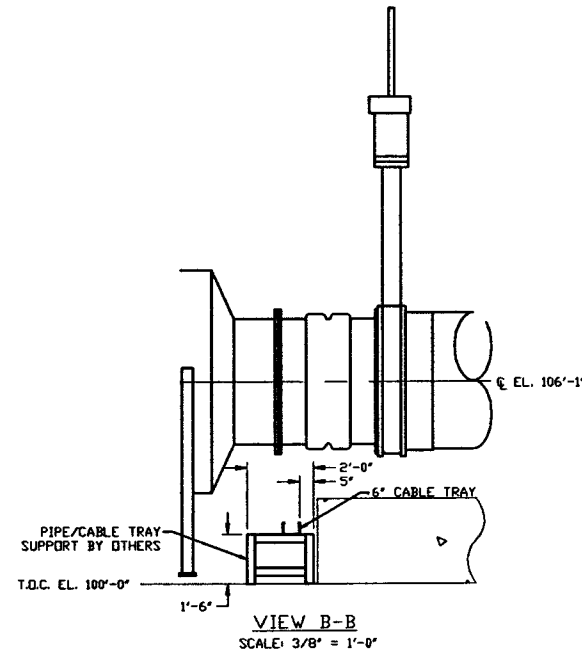


- NOTES:**
 1) ALL CABLETRAY LENGTHS ARE 12'-0" UNLESS OTHERWISE SPECIFIED
 2) ALL CABLE TRAY SHALL BE GROUNDED PER N.E.C.
 3) ALL CABLE TRAY SHALL BE FIELD SUPPORTED.
 4) CABLE TRAY FOR ION PUMP POWER CABLES SHALL BE LABELED "DANGER HIGH VOLTAGE".



**NOT FOR
CONSTRUCTION**

LIGO-D960555-00-V

PROPRIETARY AND CONFIDENTIAL
 THIS DOCUMENT CONTAINS PROPRIETARY INFORMATION BELONGING TO PROCESS SYSTEMS INTERNATIONAL, INC. OR ITS AFFILIATED COMPANIES AND SHALL BE USED ONLY FOR THE PURPOSE FOR WHICH IT WAS SUPPLIED. IT SHALL NOT BE COPIED, REPRODUCED OR OTHERWISE USED NOR SHALL SUCH INFORMATION BE FURNISHED IN WHOLE OR IN PART TO OTHERS EXCEPT IN ACCORDANCE WITH THE TERMS OF ANY AGREEMENT UNDER WHICH IT WAS SUPPLIED OR WITH THE PRIOR WRITTEN CONSENT OF PROCESS SYSTEMS INTERNATIONAL, INC. AND SHALL BE RETURNED UPON REQUEST.

V049-3-107	CABLE TRAY PLAN DIAGONAL SECTION		
V049-3-106	CABLE TRAY PLAN VERTEX SECTION		
V049-3-002	WASHINGTON OVERALL SITE PLAN		
V049-3-001	GENERAL NOTES & LEGEND		
DWG. NO.	DESCRIPTION	DWG. NO.	DESCRIPTION
REFERENCE DRAWINGS			

UNLESS OTHERWISE SPECIFIED
 DIMENSIONS ARE IN INCHES
 TOLERANCES:
 FRACTIONS: ±
 ANGULAR: 40°-00' NOM ± 4°
 TWO PLACE DECIMAL: ± .01
 THREE PLACE DECIMAL: ± .005
 FINISHED SURFACE RGS
 BREAK CORNERS R6 BUT REMOVE ALL BURRS

DO NOT SCALE THIS DRAWING	0	ISSUE FOR FDR											
USED FOR	REV	DESCRIPTION	CHKD	DRWN	DATE	DEDU							
NEXT ASS'Y		ISSUE DESCRIPTION											

PROCESS SYSTEMS INTERNATIONAL, INC.
 20 WALKUP DR. WESTBOROUGH, MASSACHUSETTS 01581 USA

**CABLE TRAY PLAN
LIGO VACUUM EQUIPMENT
WASHINGTON SITE
RIGHT BEAM MANIFOLD**

CAD FILE	SIZE	DWG. NO.	REV.
V0493108	D	V049-3-108	0
SCALE	SHEET		
3/16" = 1' - 0"	1 OF 1		

8 7 6 5 4 3 2 1