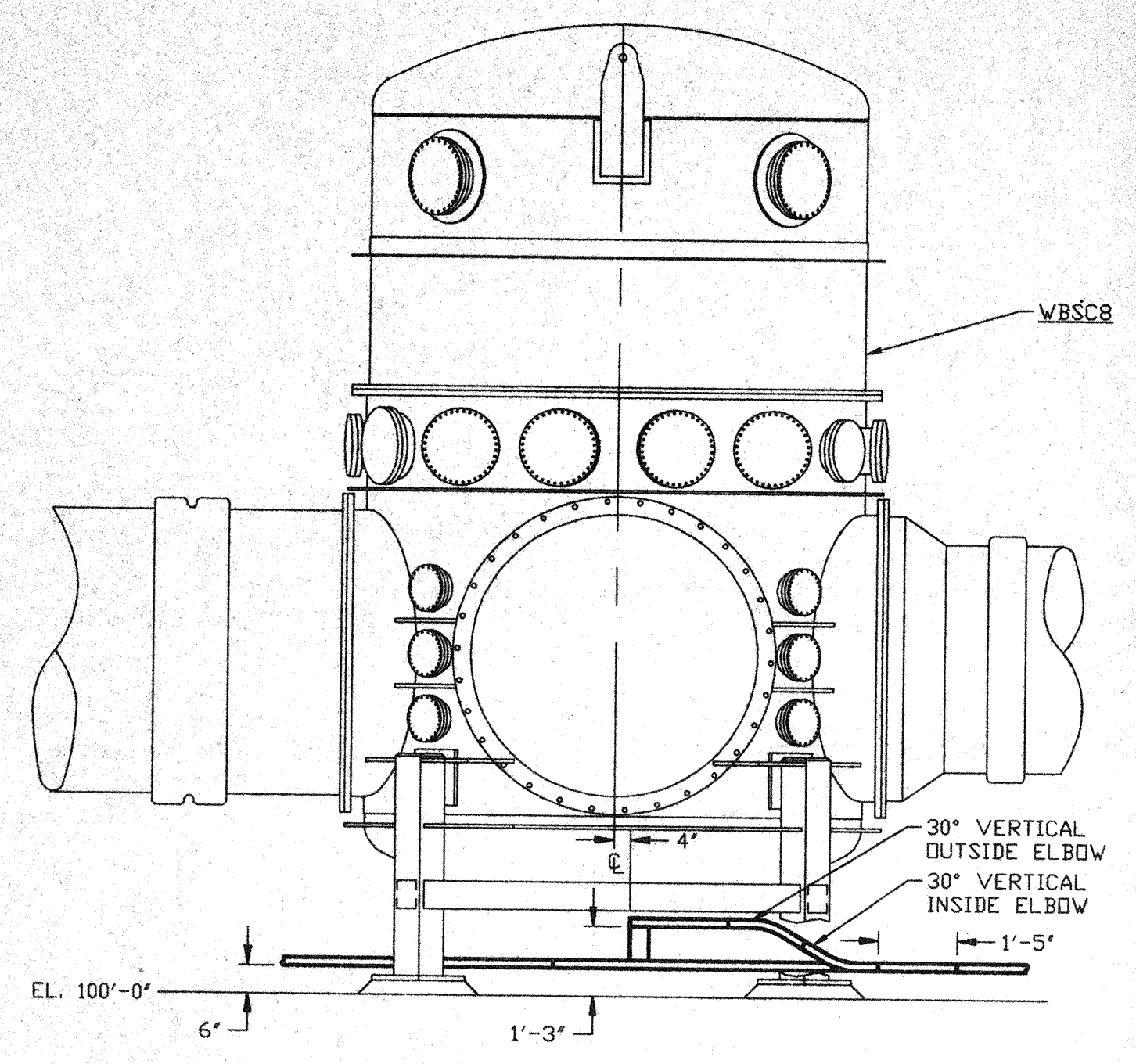
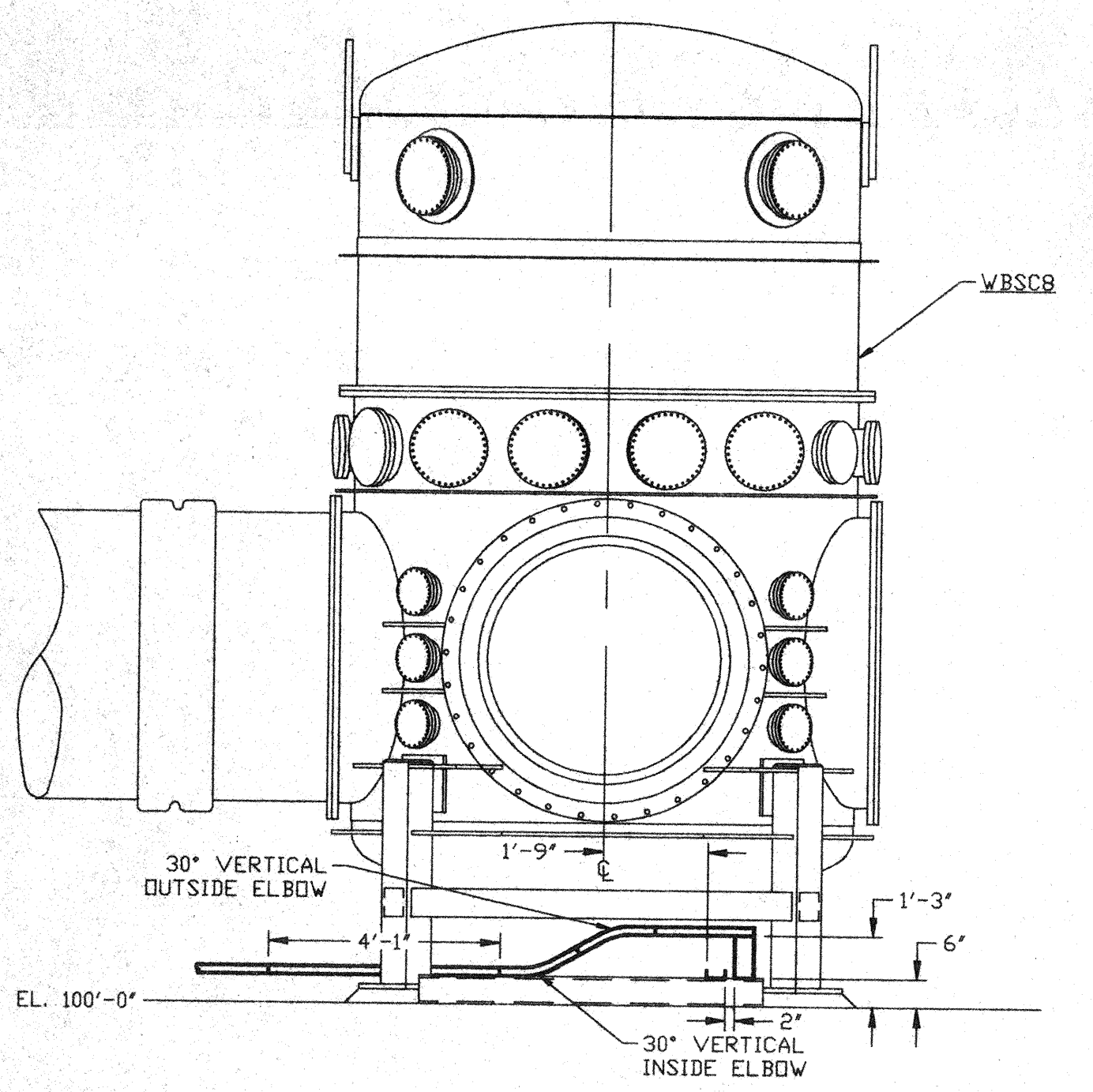


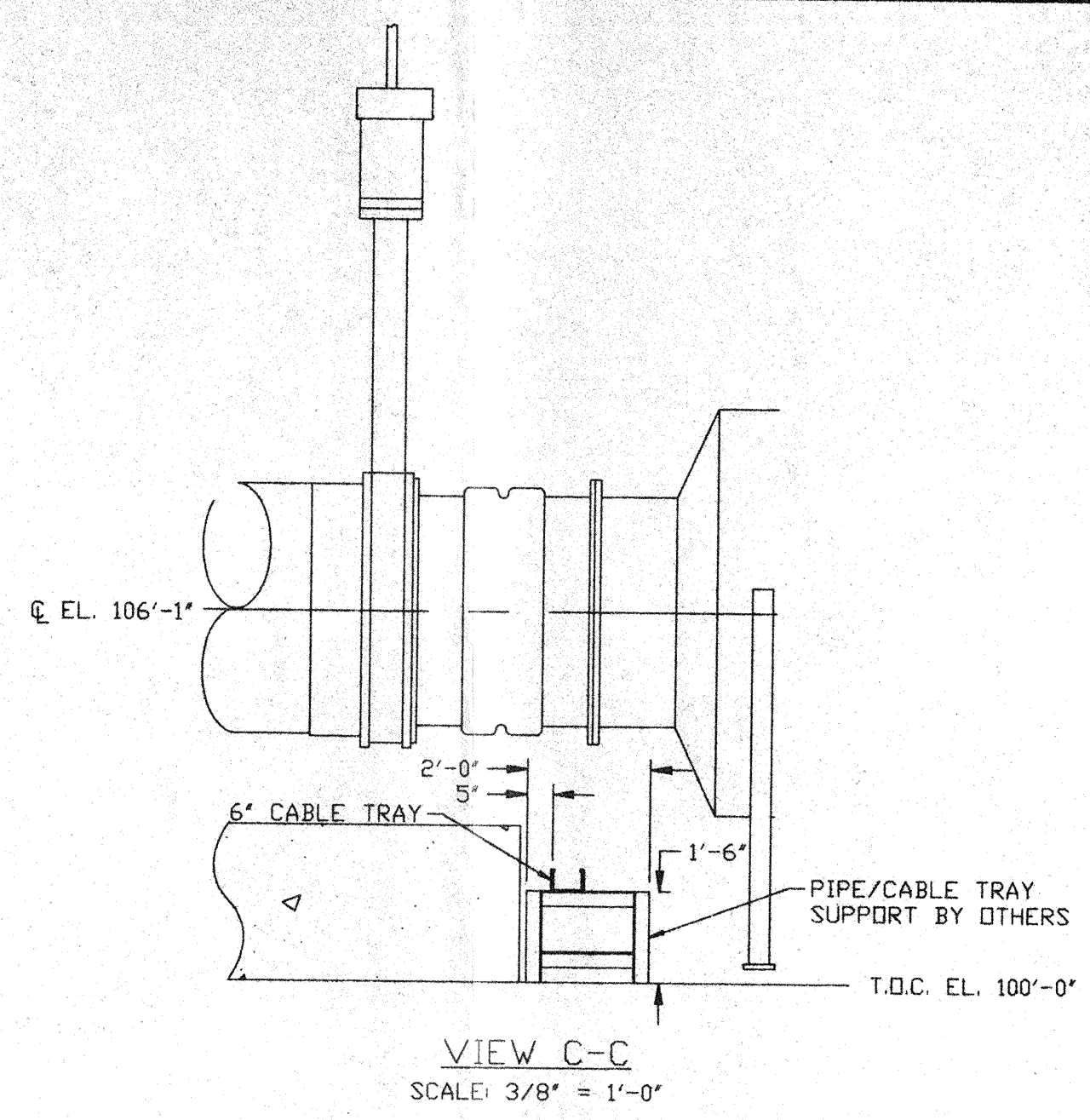
- NOTES:**
- 1) ALL CABLETRAY LENGTHS ARE 12'-0" UNLESS OTHERWISE SPECIFIED.
 - 2) ALL CABLE TRAY SHALL BE GROUNDED PER N.E.C.
 - 3) ALL CABLE TRAY SHALL BE FIELD SUPPORTED.
 - 4) CABLE TRAY FOR ION PUMP POWER CABLES SHALL BE LABELED "DANGER HIGH VOLTAGE".



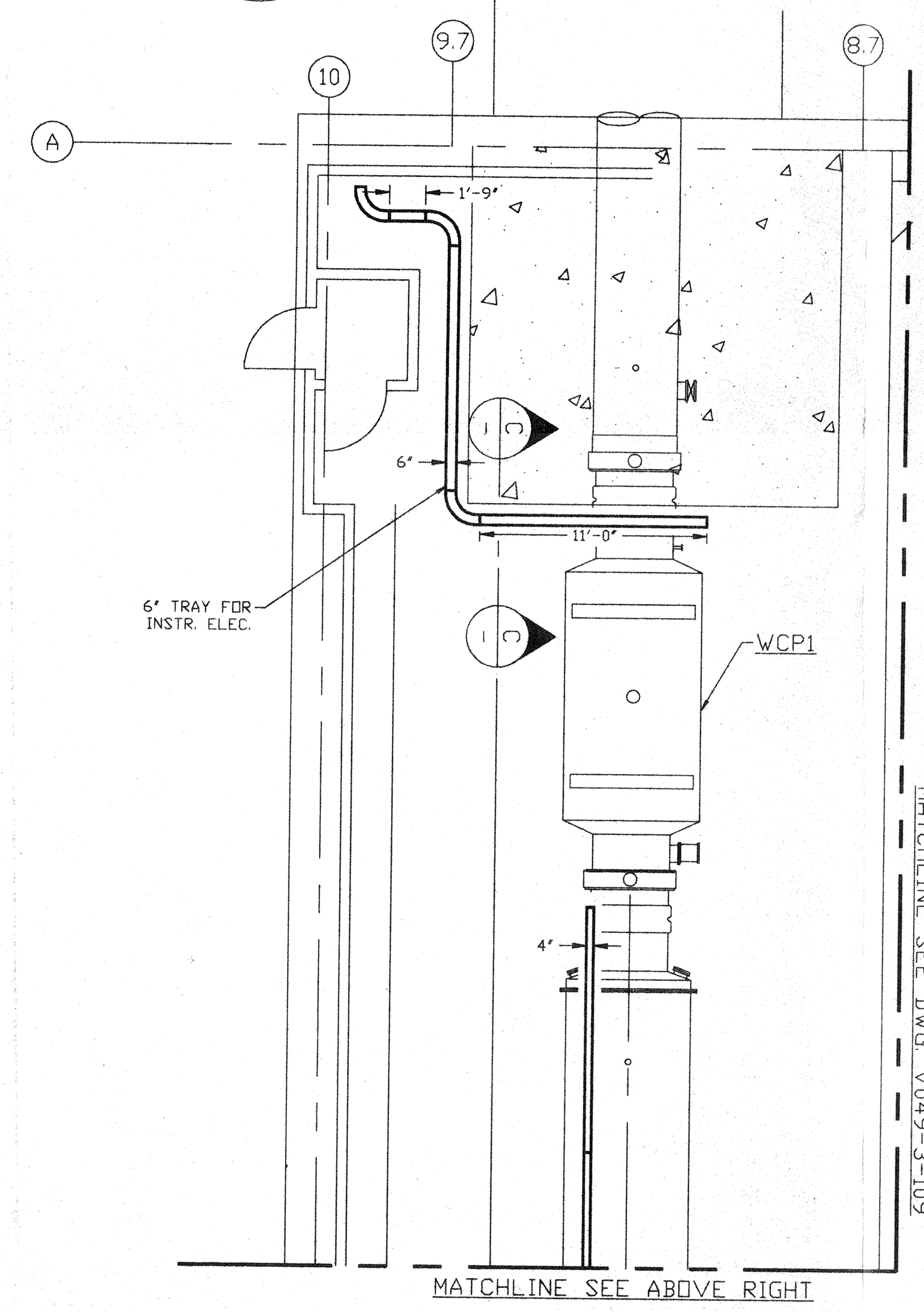
VIEW A-A
SCALE: 3/8" = 1'-0"



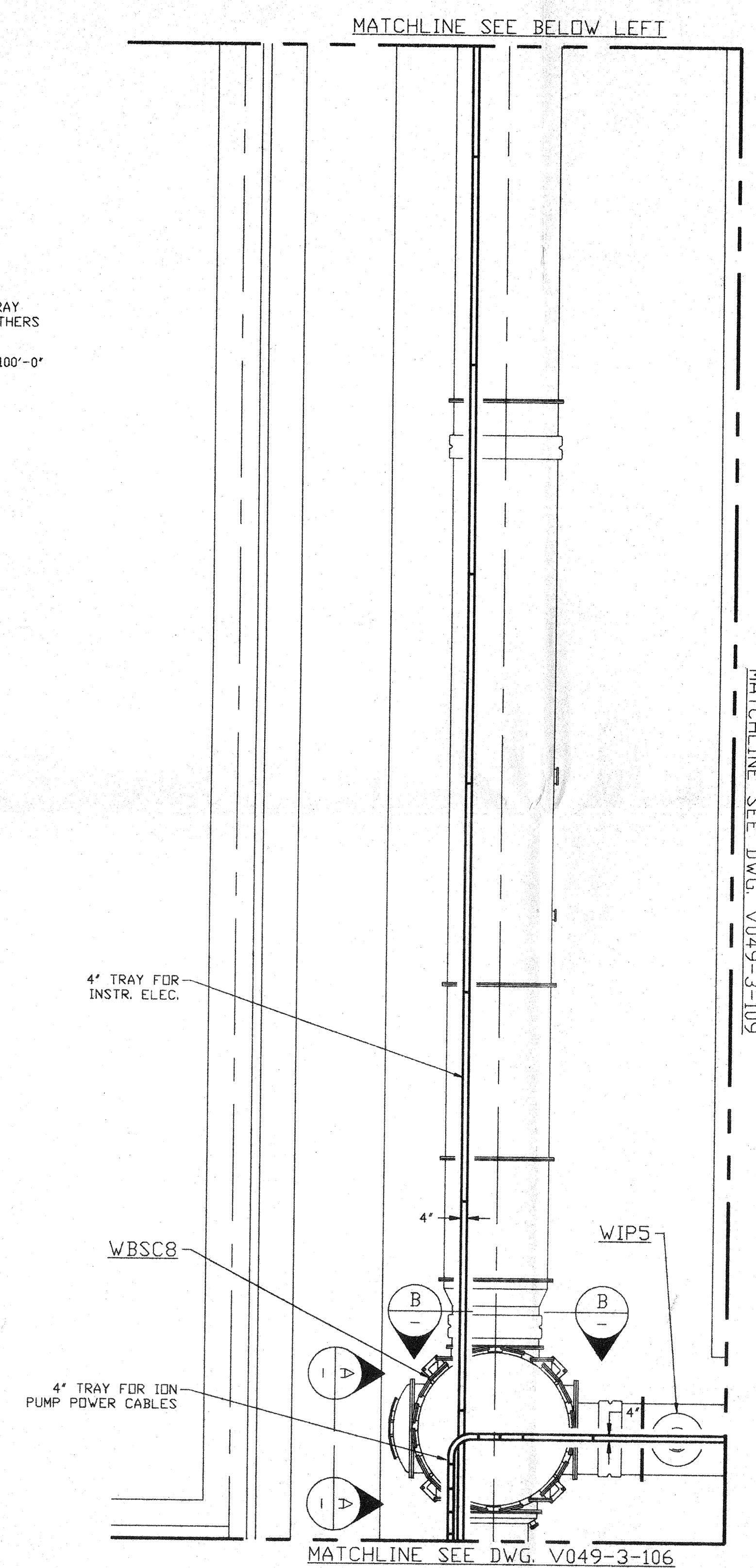
VIEW B-B
SCALE: 3/8" = 1'-0"



VIEW C-C
SCALE: 3/8" = 1'-0"



MATCHLINE SEE ABOVE RIGHT



MATCHLINE SEE DWG. V049-3-106

MATCHLINE SEE DWG. V049-3-109

PROPRIETARY AND CONFIDENTIAL																													
THIS DOCUMENT CONTAINS PROPRIETARY INFORMATION BELONGING TO PROCESS SYSTEMS INTERNATIONAL, INC. OR ITS AFFILIATED COMPANIES AND SHALL BE USED ONLY FOR THE PURPOSE FOR WHICH IT WAS SUPPLIED. IT SHALL NOT BE COPIED, REPRODUCED OR OTHERWISE USED, NOR SHALL SUCH INFORMATION BE FURNISHED IN WHOLE OR IN PART TO OTHERS EXCEPT IN ACCORDANCE WITH THE TERMS OF ANY AGREEMENT UNDER WHICH IT WAS SUPPLIED OR WITH THE PRIOR WRITTEN CONSENT OF PROCESS SYSTEMS INTERNATIONAL, INC. AND SHALL BE RETURNED UPON REQUEST.																													
V049-3-109		CABLE TRAY PLAN DIAGONAL SECTION																											
V049-3-106		CABLE TRAY PLAN VERTEX SECTION																											
V049-3-002		WASHINGTON OVERALL SITE PLAN																											
V049-3-001		GENERAL NOTES & LEGEND																											
DWG. NO.		DESCRIPTION		DWG. NO.		DESCRIPTION																							
UNLESS OTHERWISE SPECIFIED DIMENSIONS ARE IN INCHES																													
TOLERANCES: FRACTIONAL ± ANGULARMACH ±0°-30' BEND ±2° TWO PLACE DECIMAL ±.01 THREE PLACE DECIMAL ±.005 FINISHED SURFACE RMS BREAK CORNERS IN DUTY REMOVE ALL BURRS																													
DO NOT SCALE THIS DRAWING		0		ISSUE FOR FDR																									
USED ON:		REV		DESCRIPTION																									
NEXT ASS'Y:																													
ISSUE DESCRIPTION																													
<table border="1"> <tr> <td>CHKD</td> <td>DRWN</td> <td>DATE</td> <td>DED#</td> </tr> <tr> <td></td> <td></td> <td>04.26.96</td> <td>0129</td> </tr> </table>																						CHKD	DRWN	DATE	DED#			04.26.96	0129
CHKD	DRWN	DATE	DED#																										
		04.26.96	0129																										
<table border="1"> <tr> <td>CAD FILE</td> <td>SIZE</td> <td>DWG. NO.</td> <td>REV.</td> </tr> <tr> <td>V0493107</td> <td>D</td> <td>V049-3-107</td> <td>0</td> </tr> </table>																						CAD FILE	SIZE	DWG. NO.	REV.	V0493107	D	V049-3-107	0
CAD FILE	SIZE	DWG. NO.	REV.																										
V0493107	D	V049-3-107	0																										
SCALE: 3/16" = 1' - 0" SHEET: 1 OF 1																													

APR 30 1996

D960554-00-V

PROCESS SYSTEMS INTERNATIONAL, INC.
20 WALKUP DR. WESTBOROUGH, MASSACHUSETTS 01581 USA

CABLE TRAY PLAN
LIGO VACUUM EQUIPMENT
WASHINGTON SITE
LEFT BEAM MANIFOLD