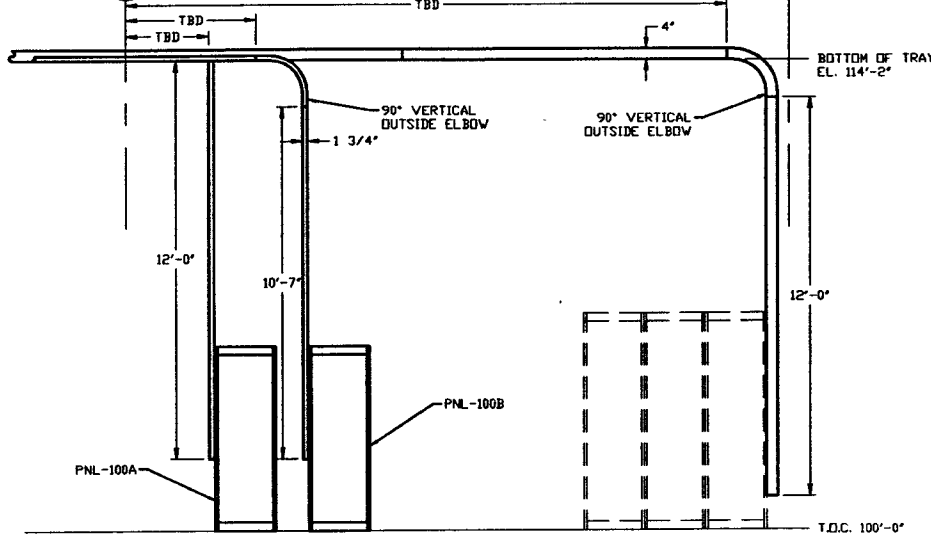
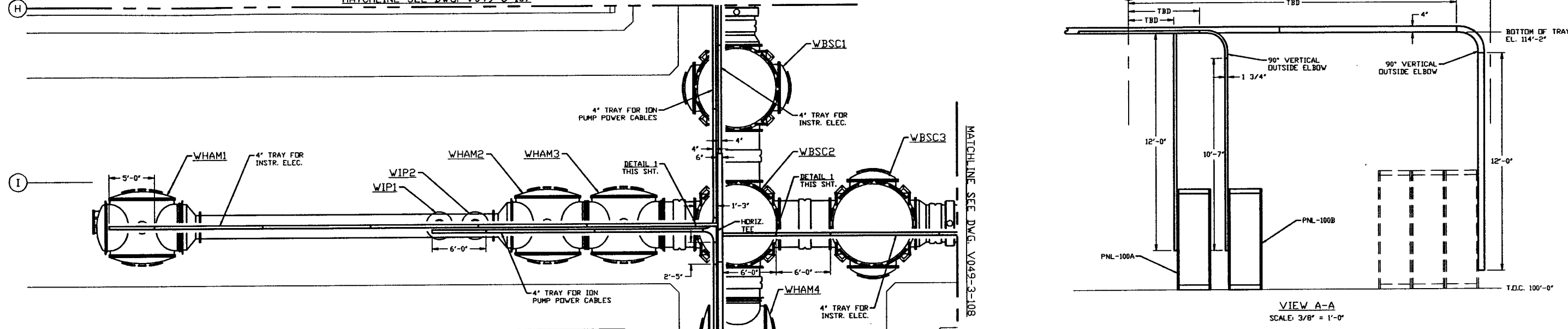


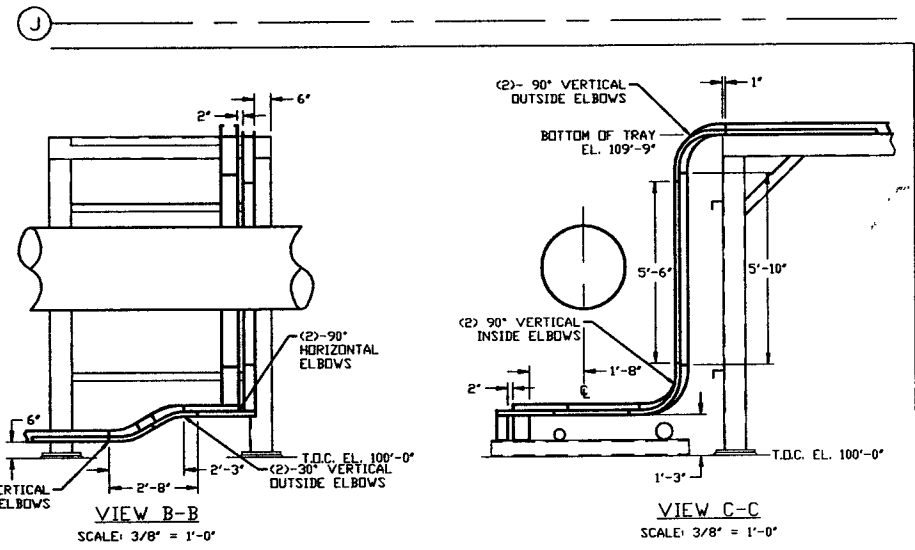
MATCHLINE SEE DWG. V049-3-107

7

8

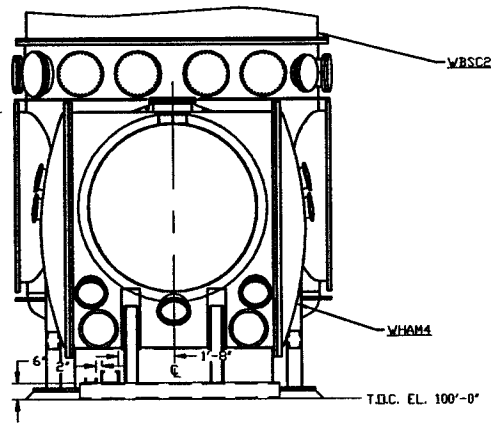


VIEW A-A
SCALE: 3/8" = 1'-0"

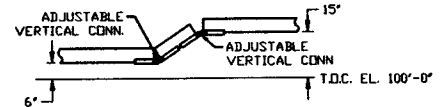


VIEW B-B
SCALE: 3/8" = 1'-0"

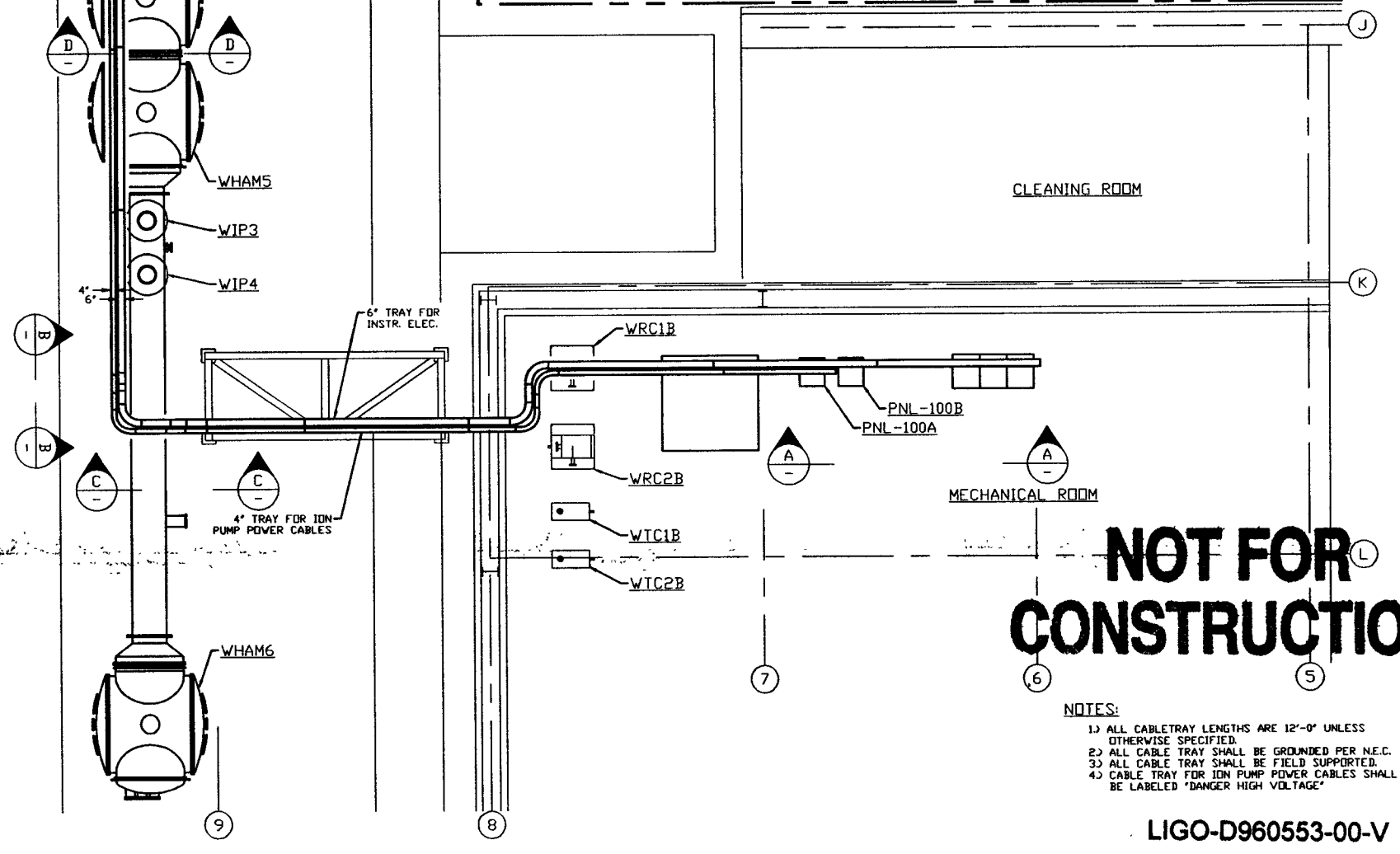
VIEW C-C
SCALE: 3/8" = 1'-0"



VIEW D-D
SCALE: 3/8" = 1'-0"



DETAIL 1
NO SCALE



NOT FOR CONSTRUCTION

- NOTES:
- 1) ALL CABLETRAY LENGTHS ARE 12'-0" UNLESS OTHERWISE SPECIFIED.
 - 2) ALL CABLE TRAY SHALL BE GROUNDED PER N.E.C.
 - 3) ALL CABLE TRAY SHALL BE FIELD SUPPORTED.
 - 4) CABLE TRAY FOR ION PUMP POWER CABLES SHALL BE LABELED 'DANGER HIGH VOLTAGE'

LIGO-D960553-00-V

PROPRIETARY AND CONFIDENTIAL

THIS DOCUMENT CONTAINS PROPRIETARY INFORMATION BELONGING TO PROCESS SYSTEMS INTERNATIONAL, INC. OR ITS AFFILIATED COMPANIES AND SHALL BE USED ONLY FOR THE PURPOSE FOR WHICH IT WAS SUPPLIED. IT SHALL NOT BE COPIED, REPRODUCED OR OTHERWISE USED, NOR SHALL SUCH INFORMATION BE FURNISHED IN WHOLE OR IN PART TO OTHERS EXCEPT IN ACCORDANCE WITH THE TERMS OF ANY AGREEMENT UNDER WHICH IT WAS SUPPLIED OR WITH THE PRIOR WRITTEN CONSENT OF PROCESS SYSTEMS INTERNATIONAL, INC. AND SHALL BE RETURNED UPON REQUEST.

BVG. NO.	DESCRIPTION	BVG. NO.	DESCRIPTION
V049-3-108	CABLE TRAY PLAN RIGHT BEAM MANIFOLD		
V049-3-107	CABLE TRAY PLAN LEFT BEAM MANIFOLD		
V049-3-002	WASHINGTON OVERALL SITE PLAN		
V049-3-001	GENERAL NOTES & LEGEND		

UNLESS OTHERWISE SPECIFIED DIMENSIONS ARE IN INCHES

DO NOT SCALE THIS DRAWING	REV	ISSUE FOR	DESCRIPTION	CHKD	DRWN	DATE	DCDN
	0	ISSUE FOR FDR				04.26.96	0129

PROCESS SYSTEMS INTERNATIONAL, INC.
30 WALKUP DR. WESTBOROUGH, MASSACHUSETTS 01581 USA

**CABLE TRAY PLAN
LIGO VACUUM EQUIPMENT
WASHINGTON SITE
VERTEX SECTION**

CAD FILE	SIZE	BVG. NO.	REV.
V0493106	D	V049-3-106	0

SCALE: 3/16" = 1'-0" SHEET 1 OF 1