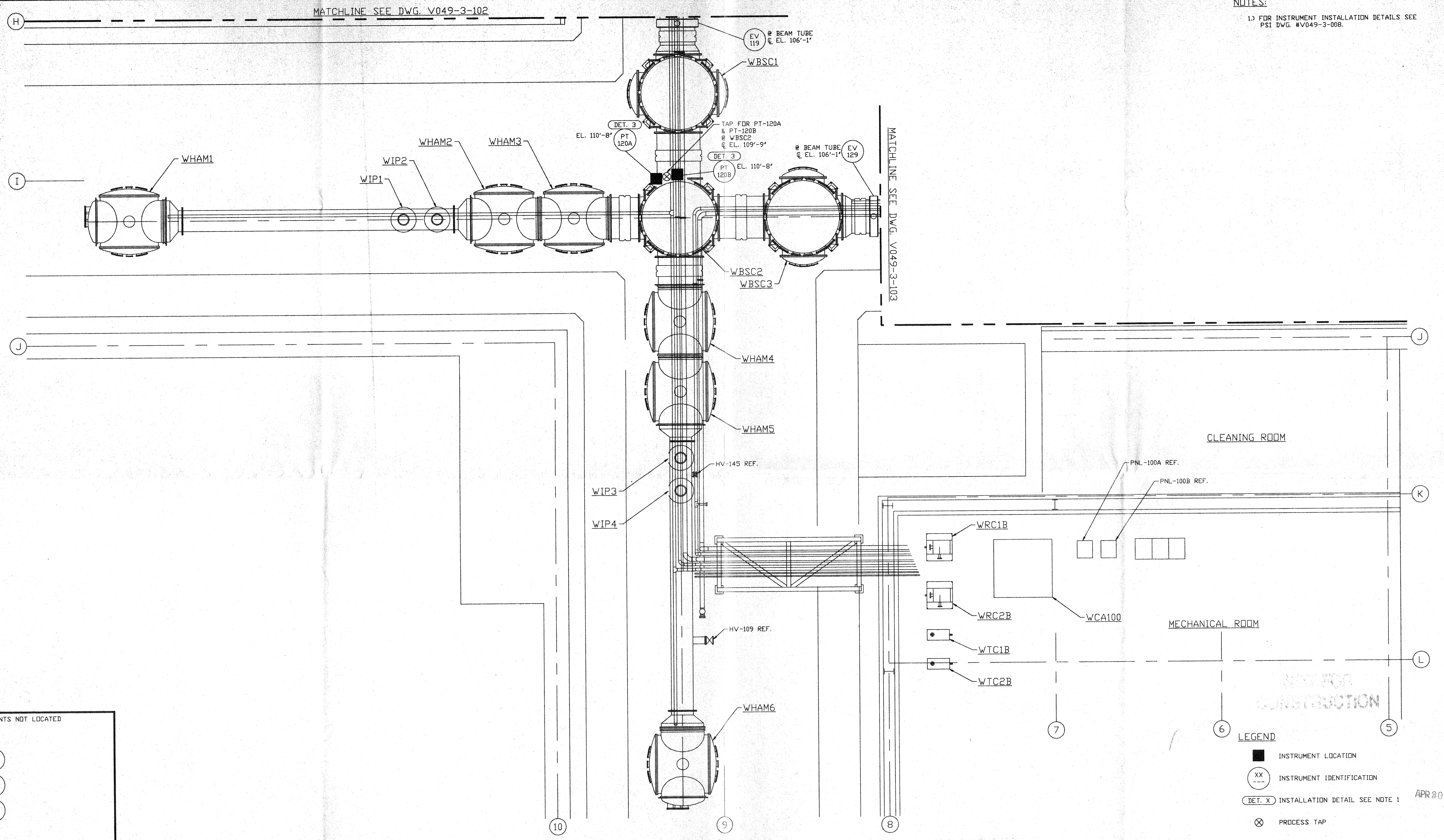


NOTES:
 1) FOR INSTRUMENT INSTALLATION DETAILS SEE
 PSI DWG. #V049-3-008.



INSTRUMENTS NOT LOCATED

PCV 120
 PI 198
 PI 184

LEGEND

- INSTRUMENT LOCATION
- XX INSTRUMENT IDENTIFICATION
- DET. X INSTALLATION DETAIL SEE NOTE 1
- ⊗ PROCESS TAP

APR 30 1996

D960549-00-V

PROPRIETARY AND CONFIDENTIAL THIS DOCUMENT CONTAINS PROPRIETARY INFORMATION BELONGING TO PROCESS SYSTEMS INTERNATIONAL, INC. OR ITS AFFILIATED COMPANIES AND SHALL BE USED ONLY FOR THE PURPOSE FOR WHICH IT WAS SUPPLIED. IT SHALL NOT BE COPIED, REPRODUCED OR OTHERWISE USED, NOR SHALL SUCH INFORMATION BE FURNISHED IN WHOLE OR IN PART TO OTHERS EXCEPT IN ACCORDANCE WITH THE TERMS OF ANY AGREEMENT UNDER WHICH IT WAS SUPPLIED OR WITH THE PRIOR WRITTEN CONSENT OF PROCESS SYSTEMS INTERNATIONAL, INC. AND SHALL BE RETURNED UPON REQUEST.		V049-5-001 EQUIP. ARRANGEMENT WASHINGTON VERTEX SECTION V049-3-008 INSTRUMENT INSTALLATION DETAILS V049-3-002 WASHINGTON OVERALL SITE PLAN V049-3-001 GENERAL NOTES & LEGEND V049-0-013 P & I D WASHINGTON VERTEX SECTION	UNLESS OTHERWISE SPECIFIED DIMENSIONS ARE IN INCHES TOLERANCES: FRACTIONAL ± .005 ANGULAR ARCH 40°-50° BEND 42° TWO PLACE DECIMAL ± .01 THREE PLACE DECIMAL ± .005 FINISHED SURFACE ONLY BREAK CORNERS IN OUT REMOVE ALL BURRS	DO NOT SCALE THIS DRAWING 0 ISSUE FOR FDR USED ON: REV DESCRIPTION NEXT ASS'Y:	ISSUE DESCRIPTION CHKD DRWN DATE DECD D.W. GMB JAW 04.26.96 0129	PROCESS SYSTEMS INTERNATIONAL, INC. 20 WALKUP DR. WESTBOROUGH, MASSACHUSETTS 01581 USA INSTRUMENT PLAN LIGO VACUUM EQUIPMENT WASHINGTON SITE VERTEX SECTION CAD FILE V0493101 SIZE D DWG. NO. V049-3-101 REV. 0 SCALE 3/16" = 1' - 0" SHEET 1 OF 1	
8	7	6	5	4	3	2	1