

NOT FOR
CONSTRUCTION

APR 30 1996

0960547-00-V

PROPRIETARY AND CONFIDENTIAL
THIS DOCUMENT CONTAINS PROPRIETARY INFORMATION BELONGING TO PROCESS SYSTEMS INTERNATIONAL, INC. OR ITS AFFILIATED COMPANIES AND SHALL BE USED ONLY FOR THE PURPOSE FOR WHICH IT WAS SUPPLIED. IT SHALL NOT BE COPIED, REPRODUCED OR OTHERWISE USED, NOR SHALL SUCH INFORMATION BE FURNISHED IN WHOLE OR IN PART TO OTHERS EXCEPT IN ACCORDANCE WITH THE TERMS OF ANY AGREEMENT UNDER WHICH IT WAS SUPPLIED OR WITH THE PRIOR WRITTEN CONSENT OF PROCESS SYSTEMS INTERNATIONAL, INC. AND SHALL BE RETURNED UPON REQUEST.

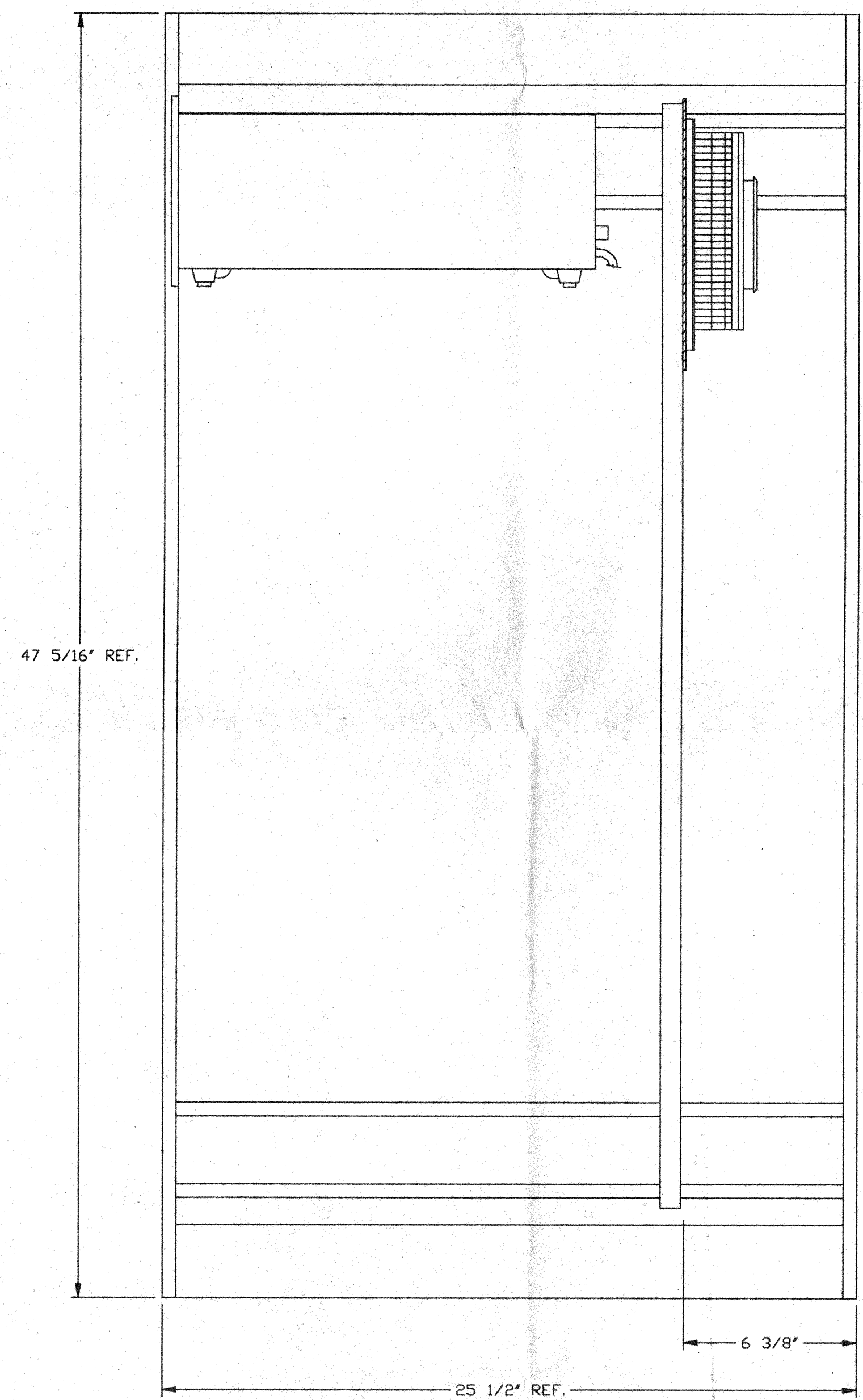
UNLESS OTHERWISE SPECIFIED
DIMENSIONS ARE IN INCHES
TOLERANCES:
FRACTIONAL ±
ANGULAR ± 30°-30' BEND ± 2°
TWO PLACE DECIMAL ± .01
THREE PLACE DECIMAL ± .005
FINISHED SURFACE RMS
BREAK CORNERS IN .010
REMOVE ALL BURRS

PROCESS SYSTEMS INTERNATIONAL, INC. 20 WALKUP DR. WESTBOROUGH, MASSACHUSETTS 01581 USA			
PNL-200,300,400,500,700,800 ASSEMBLY LIGO VACUUM EQUIPMENT WASHINGTON SITE & LOUISIANA SITE			
CAD FILE V0493004\3004S1	SIZE D	DWG. NO. V049-3-004	REV. 0
SCALE 1/4" = 1"	SHEET 1 OF 2		

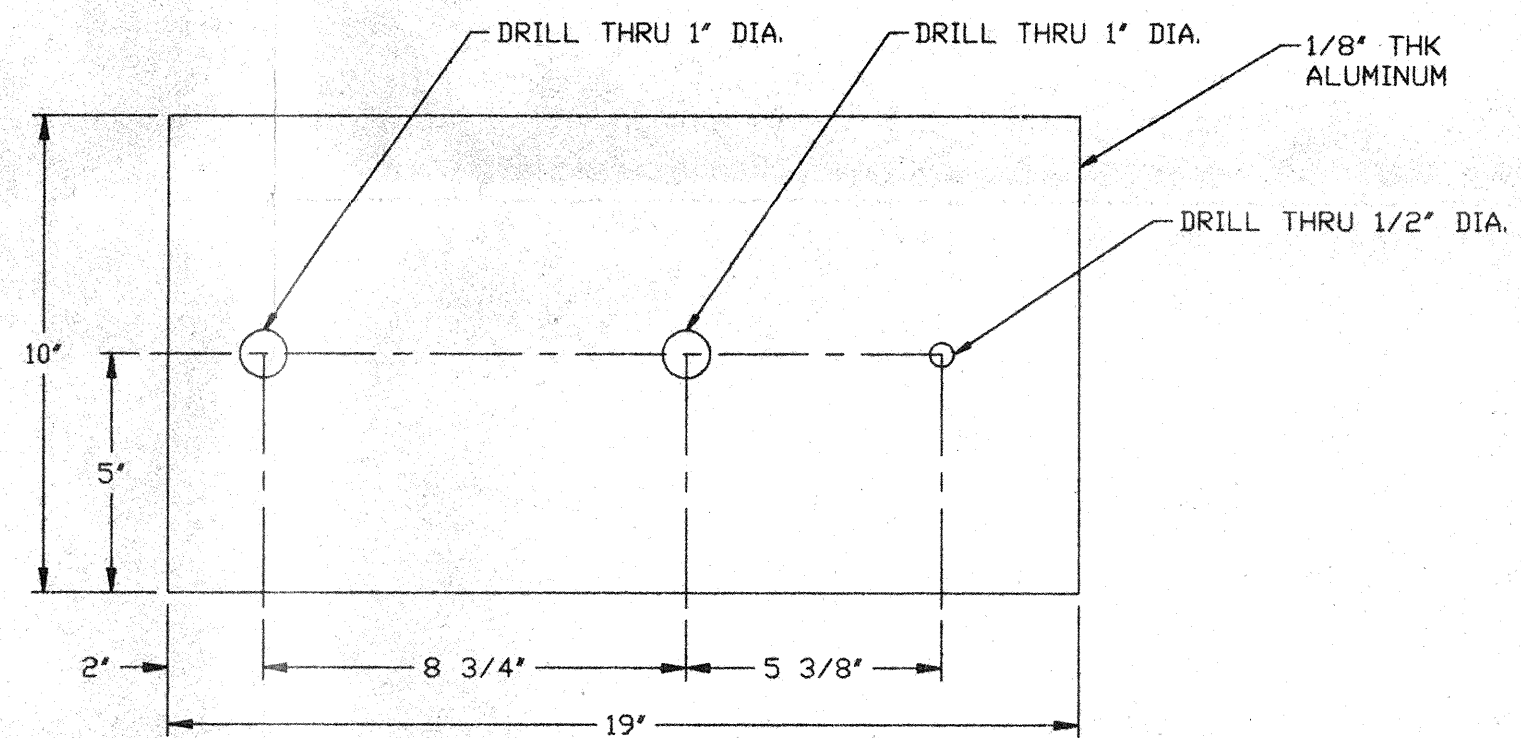
DWG. NO.	DESCRIPTION	DWG. NO.	DESCRIPTION
	REFERENCE DRAWINGS		

REV	DESCRIPTION	CHKD	DRWN	DATE	DECD
0	ISSUE FOR FDR			04.26.96	0129

DO NOT SCALE THIS DRAWING



SECTION A-A




DETAIL 1

NOT FOR CONSTRUCTION

APR 30 1996

D960547-0-V SEE SHEET 1 FOR REVISIONS

 PROCESS SYSTEMS INTERNATIONAL INC. 20 WALKUP DR. WESTBOROUGH, MASSACHUSETTS 01581 USA			
PNL-200,300,400,500,700,800 ASSEMBLY LIGD VACUUM EQUIPMENT WASHINGTON SITE CORNER STATION			
CAD FILE V0493004\3004S2	SIZE D	DWG. NO. V049-3-004	REV. 0
SCALE 1/4" = 1"	SHEET 2 OF 2		