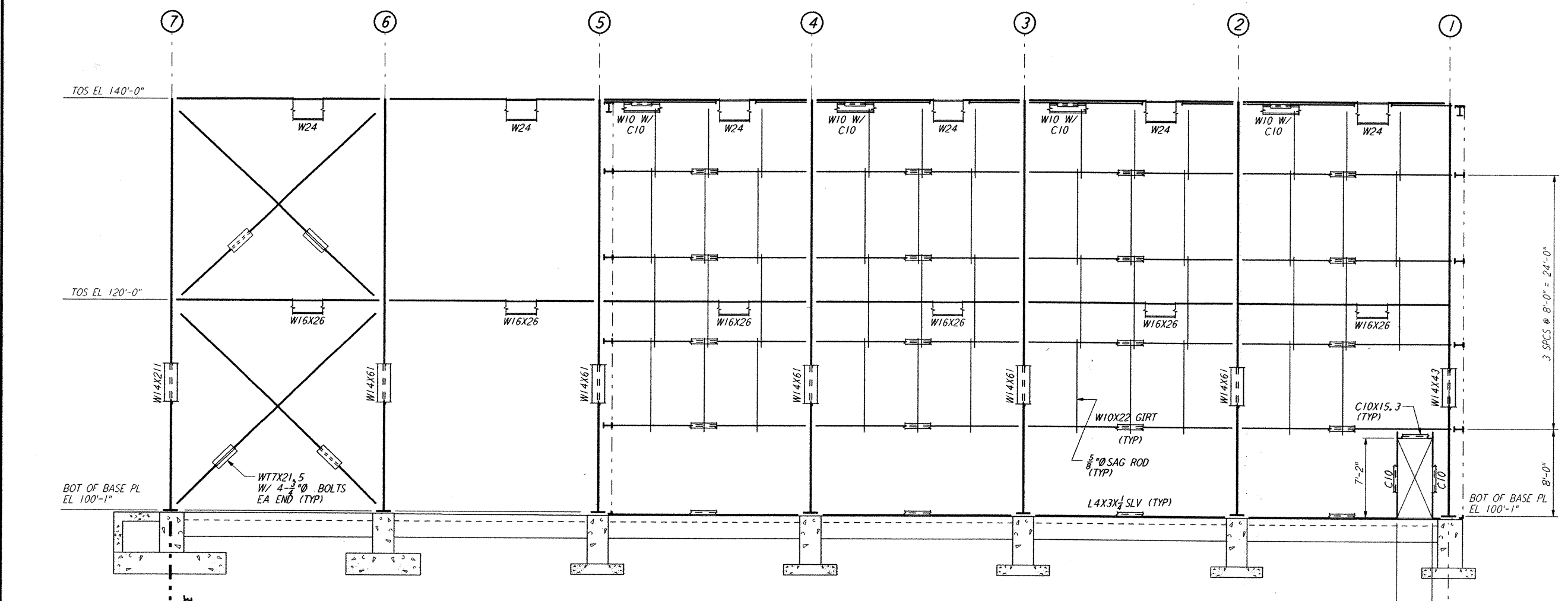
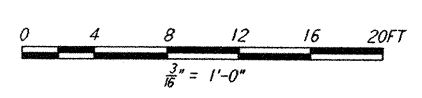


PARTIAL ELEVATION AT COLUMN LINE J  
 3/8" = 1'-0"



PARTIAL ELEVATION AT COLUMN LINE J  
 3/8" = 1'-0"



LIG0-D960477-A-D

NO.	DATE	APRD BY	DESCRIPTION OF REVISION
9			
8			
7			
6			
5			
4			
3			
2			
1			

NO.	DATE	APRD BY	ISSUE FOR
A	10-31-95	TDM	PRELIMINARY DESIGN REVIEW
B			
C			
D			
E			
F			
G			
H			
J			

DATE	10-31-95
DRAWN	MCS
CHECKED	
ENGINEER	
PROJ MGR	

**PARSONS**  
 100 WEST WALNUT STREET  
 PASADENA, CALIFORNIA

**LIGO**  
 CALIFORNIA INSTITUTE OF TECHNOLOGY  
 MASSACHUSETTS INSTITUTE OF TECHNOLOGY

LASER INTERFEROMETER  
 GRAVITATIONAL-WAVE OBSERVATORY  
 SITE NO. 1 - HANFORD, WASHINGTON

TITLE	AS NOTED	CONTRACT NUMBER	PROJECT NUMBER
CORNER STATION (LVEA) FRAMING ELEVATIONS SHEET 7	PP150969	8094	

REVISIONS  
**WA-S-114**