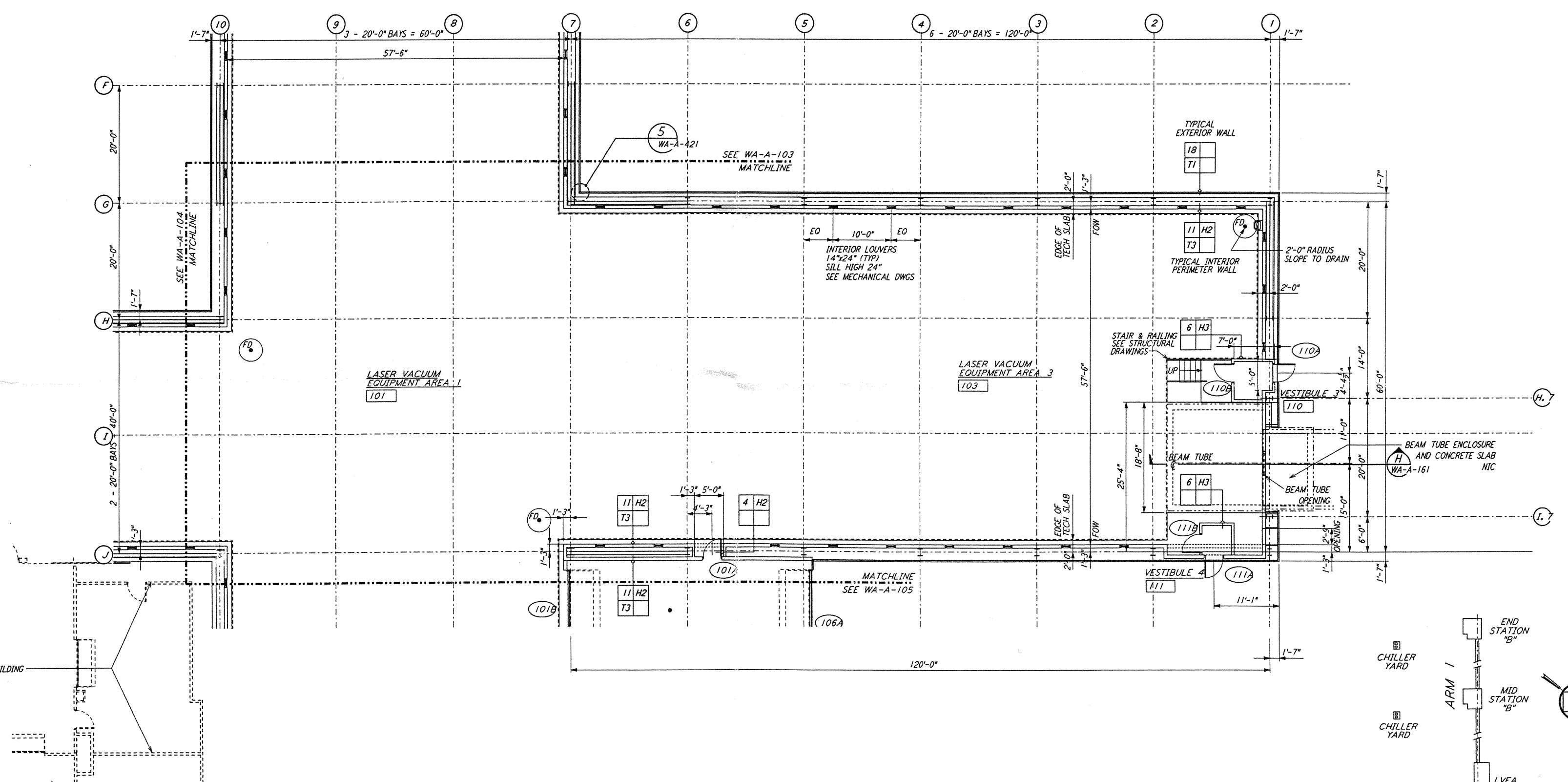


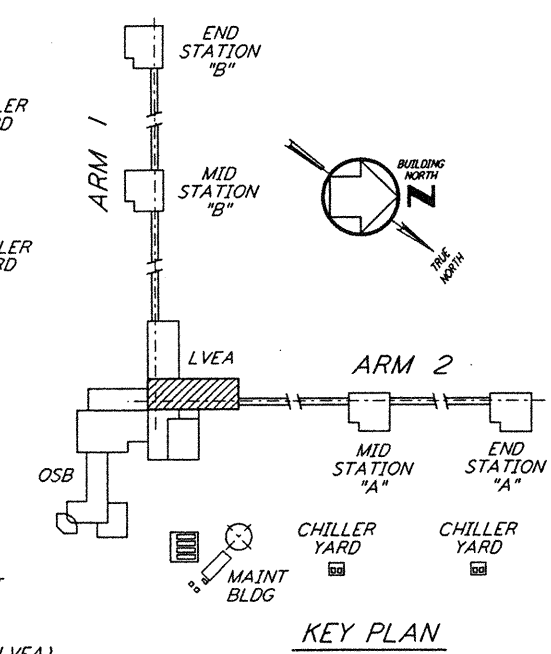
NOTE: SEE SPECIFICATIONS FOR ADDITIONAL INFORMATION AND SCHEDULES



This document and the design it covers are the property of PARSONS. They are loaned only with the borrower's expressed written agreement that they will not be reproduced, copied, loaned, exhibited, or used in any other way, except by written consent from PARSONS to the borrower.

This document and the design it covers are the property of PARSONS. They are loaned only with the borrower's expressed written agreement that they will not be reproduced, copied, loaned, exhibited, or used in any other way, except by written consent from PARSONS to the borrower.

LINE OF OPERATIONAL SUPPORT BUILDING
SEE SHEET WA-A-109



0 8 16 24 32 FT
1/8" = 1'-0"

DATUM POINT EL +100.00 = 531.11' (LVEA)
DATUM POINT EL +100.00 = 531.11' (OSB)

NO.	DATE	BY	CHKD	ENGR	PROJ	DESCRIPTION
B	4-19-96	SF	SF	TDM		FINAL DESIGN REVIEW
A	01/17/96	SF	SF	TDM		PRELIMINARY DESIGN REVIEW

DRAWN	CKT
CHECKED	
ENGINEER	
PROJ	

PARSONS
100 WEST WALNUT STREET
PASADENA, CALIFORNIA

LIGO
CALIFORNIA INSTITUTE OF TECHNOLOGY
MASSACHUSETTS INSTITUTE OF TECHNOLOGY

LASER INTERFEROMETER
GRAVITATIONAL-WAVE OBSERVATORY
SITE NO. 1 - HANFORD, WASHINGTON

TITLE	ARCHITECTURAL CORNER STATION LVEA PARTIAL FLOOR PLAN SHEET 1	SCALE	AS NOTED	CONTRACT NUMBER	PP150969	PROJECT NUMBER	8094
SHEET NUMBER	WA-A-102	REVISIONS					

LIG0-D960453-18-D

LIG0WAF3.BOR