

GENERAL NOTES:

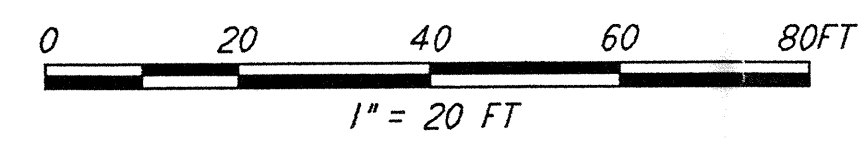
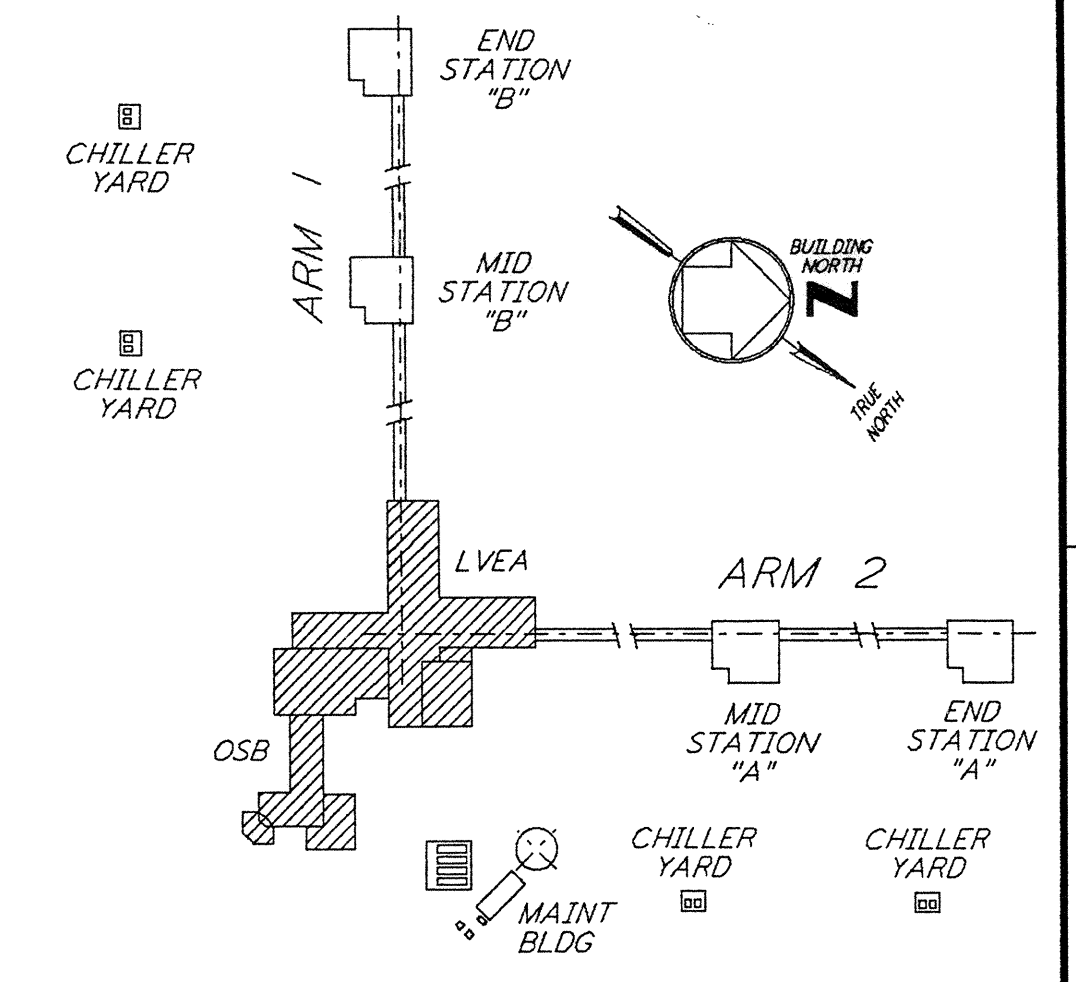
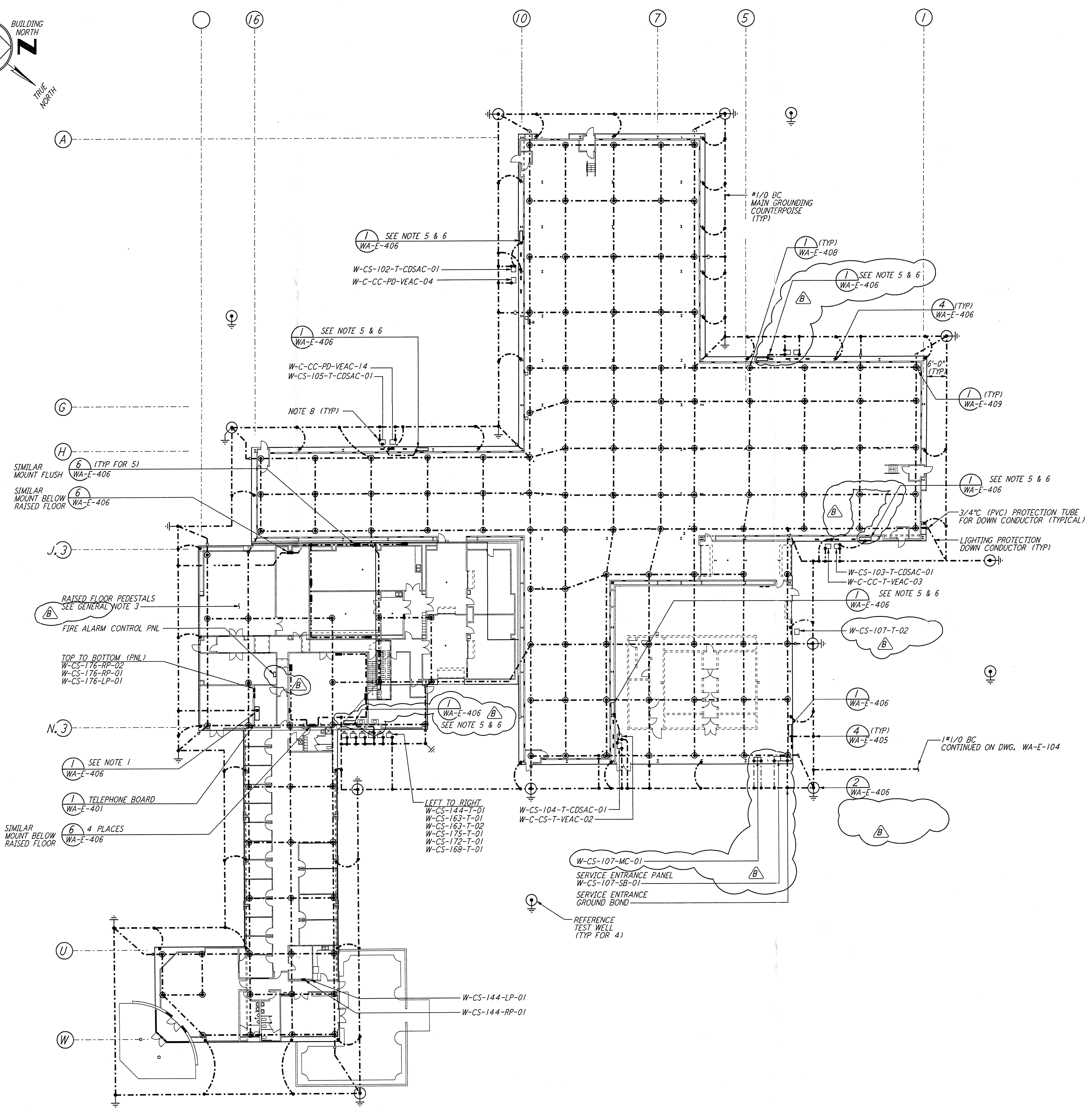
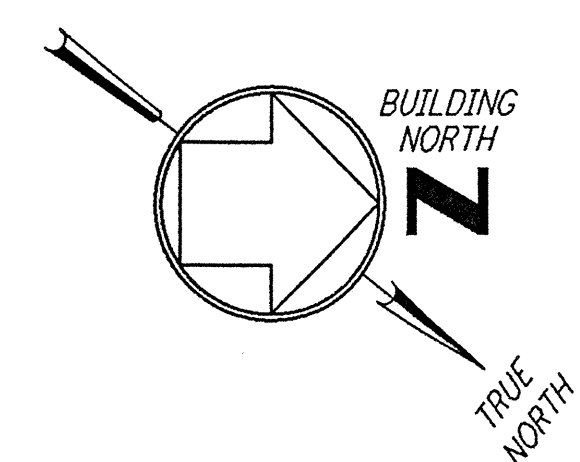
- FOR SYMBOLS, ABBREVIATIONS AND ACRONYMS SEE DWG. WA-E-001.
- FOR PLAN SYMBOLS SEE DWG. WA-E-002.
- FOR LIGHTNING PROTECTION INSTALLATION DETAILS SEE DWG. WA-E-406, WA-E-407, AND WA-E-408.
- PANELBOARDS SHOWN FOR REFERENCE ONLY.

GENERAL NOTES (LIGHTNING PROTECTION)

- INSTALLATION SHALL COMPLY IN ALL RESPECTS WITH LIGHTNING PROTECTION INSTITUTE (LPI) CODE 175 AS REQUIRED PER NFPA 780.
- FOR LIGHTNING PROTECTION INSTALLATION DETAILS, SEE DWG WA-E-408.
 BLDG. METAL WITH CORRUGATED SIDING, ROOF FINISH MODIFIED BITUMEN.
 GABLE. ROOF (CENTERED RIDGE) LESS THAN 75'H. LOWER ROOF PROTECTION FOR 50' OR LESS (NFPA 780-10)
- LOCATE AIR TERMINALS AS SHOWN.
- SUPPORT ALL EXPOSED ROOF. DOWNLEAD AND BONDING CABLE AT 4'-0" ON CENTER MAXIMUM, SEE DETAIL 17 ON WA-E-408.
- ALL MATERIALS SHALL BE U.L. APPROVED WITH "A" LABELS ON CONDUCTORS AT 10'-0" INTERVALS AND "B" LABELS ON ALL AIR TERMINALS.
- UNLESS OTHERWISE INDICATED ALL MATERIALS SHOWN HEREIN SHALL BE BY THOMPSON LIGHTNING PROTECTION INC. MFR. OR EQUAL.
- LIGHTNING PROTECTION SHALL BE PER SPECIFICATION SECTION 16670 DRAWING PRESENTATION IS FOR UNDERSTANDING ONLY.

NOTES:

- CONNECT GROUNDING CONDUCTOR TO REBAR AT BOTTOM OF FOUNDATION. REBAR SHALL BE AT LEAST 20 FEET LONG AND 1/2" DIAMETER.
- PEDESTALS AT RAISED FLOOR ROOMS SHALL BE GROUNDED; MINIMUM 10X OF ALL THROUGHOUT ENTIRE RAISED FLOOR.
- ALL METAL PARTS SUPPORTING AIR HANDLING UNITS SHALL BE GROUNDED WITH #1/0 (GREEN) IN PVC CONDUIT. CONNECT TO GROUNDING PLATES. METAL-TO-METAL PARTS SHALL BE BONDED WITH #1/0 (GREEN) STRANDED SOFT DRAWN CU WIRE.
- TRANSFORMER GROUNDING IS LOW RESISTANCE TYPE CONNECT GROUND CONDUCTOR TO NEUTRAL AND CASE.
- GROUND BOND CABLE BETWEEN TRANSFORMER NEUTRAL TERMINAL AND GROUND COUNTERPOISE SHALL BE DIRECT AND AS SHORT AS POSSIBLE.
- CONNECT ISOLATED GROUND BAR TO CDSAC TRANSFORMER NEUTRAL WITH ISOLATED #1/0 COPPER CABLE.



This document and the design it covers are the property of PARSONS. They are loaned only with the borrower's expressed written agreement that they will not be reproduced, copied, loaned, exhibited, or used in any other way, except by written consent from PARSONS to the borrower.

NO.	DATE	BY	CHKD	ENGR	PROJ	DESCRIPTION
B	5-22-96	RAE	Jry	WJ	TDM	BID ADDENDUM #2
A	4-19-96				TDM	FINAL DESIGN REVIEW & BID

DRAWN	K. R.
CHECKED	
ENGINEER	
PROJ	

PARSONS
 100 WEST WALNUT STREET
 PASADENA, CALIFORNIA

LIGO
 CALIFORNIA INSTITUTE OF TECHNOLOGY
 MASSACHUSETTS INSTITUTE OF TECHNOLOGY

LASER INTERFEROMETER
 GRAVITATIONAL-WAVE OBSERVATORY
 SITE NO. 1 - HANFORD, WASHINGTON

TITLE: ELECTRICAL CORNER STATION 3RD INTERFEROMETER LVEA GROUNDING PLAN

SCALE: AS NOTED

CONTRACT NUMBER: PP150969

PROJECT NUMBER: 8094

SHEET NUMBER: WA-E-506

J:\CAL\LOTUS\WORK\DESIGN\3RDBEVEE\WAE506.DWG