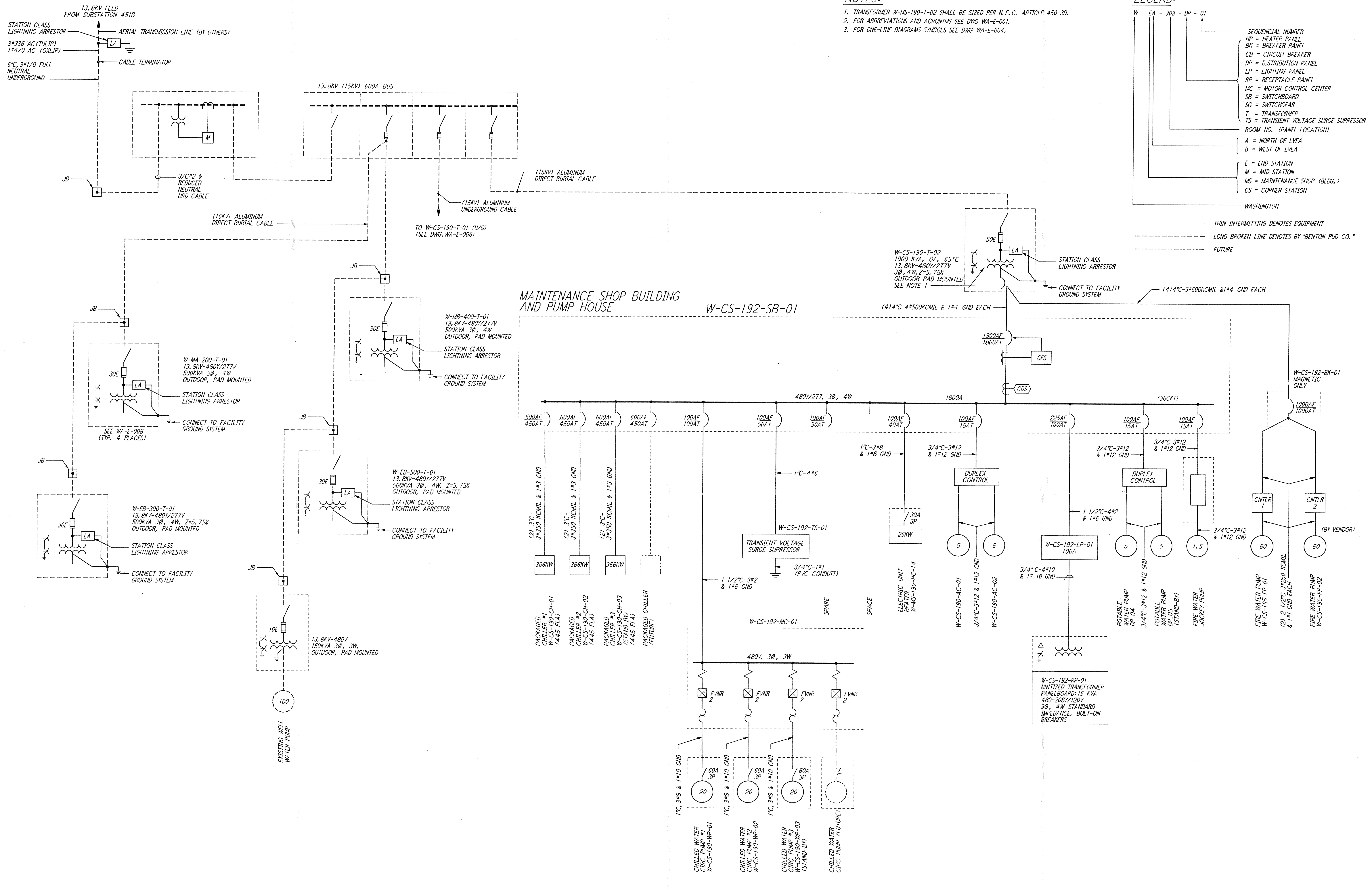


NOTES:

1. TRANSFORMER W-MS-190-T-02 SHALL BE SIZED PER N.E.C. ARTICLE 450-3D.
2. FOR ABBREVIATIONS AND ACRONYMS SEE DWG WA-E-001.
3. FOR ONE-LINE DIAGRAMS SYMBOLS SEE DWG WA-E-004.

LEGEND:

- W - EA - 303 - DP - 01
- SEQUENTIAL NUMBER
- HP = HEATER PANEL
- BK = BREAKER PANEL
- CB = CIRCUIT BREAKER
- DP = DISTRIBUTION PANEL
- LP = LIGHTING PANEL
- RP = RECEPTACLE PANEL
- MC = MOTOR CONTROL CENTER
- SB = SWITCHBOARD
- SG = SWITCHGEAR
- T = TRANSFORMER
- TS = TRANSIENT VOLTAGE SURGE SUPPRESSOR
- ROOM NO. (PANEL LOCATION)
- A = NORTH OF LVEA
- B = WEST OF LVEA
- E = END STATION
- M = MID STATION
- MS = MAINTENANCE SHOP (BLDG.)
- CS = CORNER STATION
- WASHINGTON
- THIN INTERMITTING DENOTES EQUIPMENT
- LONG BROKEN LINE DENOTES BY "BENTON PUD CO."
- FUTURE



This document and the design it covers are the property of PARSONS. They are loaned only with the borrower's expressed written agreement that they will not be reproduced, copied, loaned, exhibited, or used in any other way, except by written consent from PARSONS to the borrower.

NO.	DATE	BY	CHKD	ENGR	PROJ	DESCRIPTION
A	4-19-96	J.G.	J.H.	J.L.	J.T.M.	FINAL DESIGN REVIEW & BID

DRAWN	K. R.
CHECKED	
ENGINEER	
PROJ	

PARSONS

100 WEST WALNUT STREET
PASADENA, CALIFORNIA

LIGO

CALIFORNIA INSTITUTE OF TECHNOLOGY
MASSACHUSETTS INSTITUTE OF TECHNOLOGY

LASER INTERFEROMETER
GRAVITATIONAL-WAVE OBSERVATORY
SITE NO. 1 - HANFORD, WASHINGTON

TITLE: ELECTRICAL CORNER STATION 3RD INTERFEROMETER SINGLE LINE DIAGRAM

SHEET NUMBER: NONE CONTRACT NUMBER: PPI50969 PROJECT NUMBER: 8094

WA-E-501

LIGO-D960430-A-0