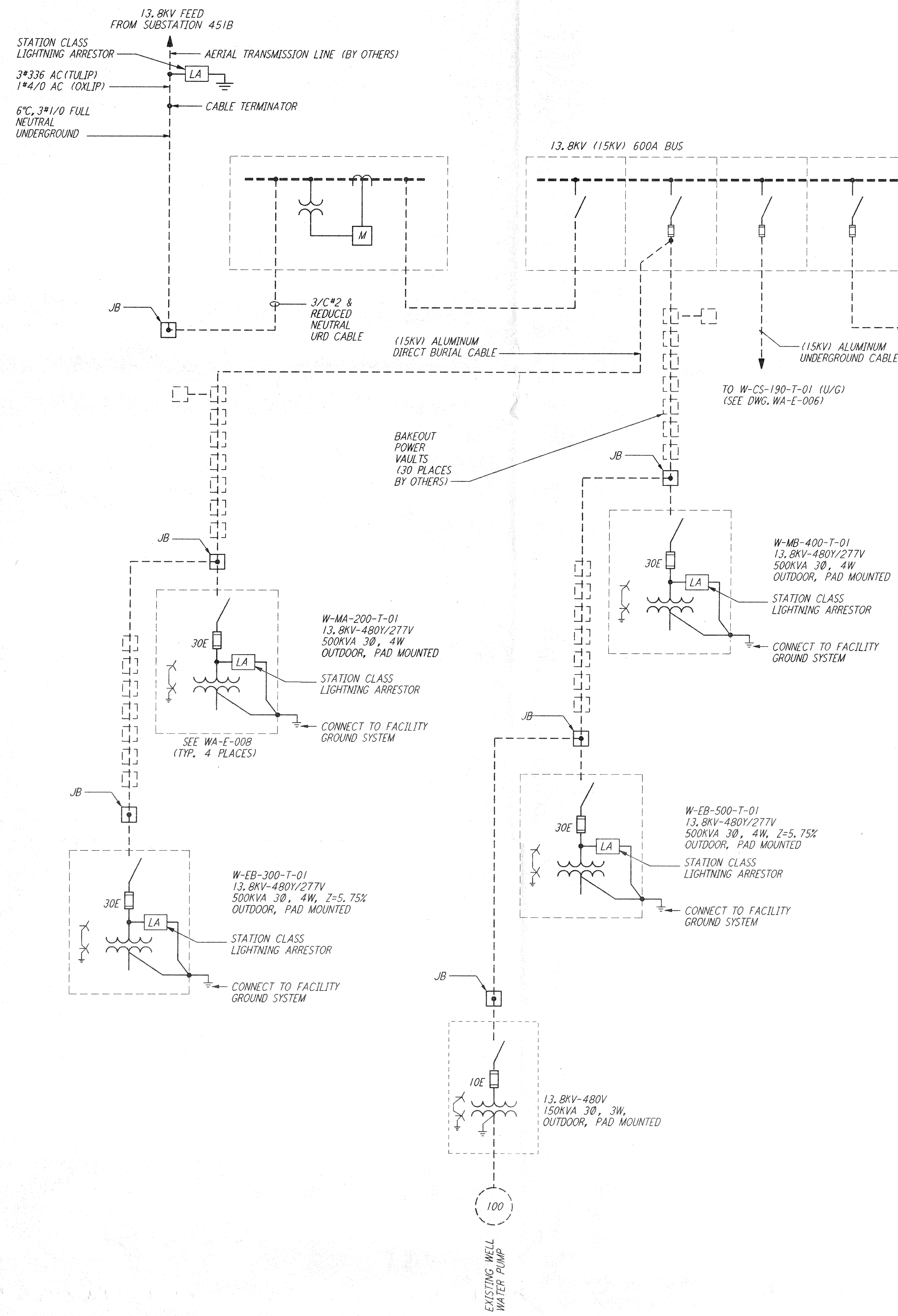


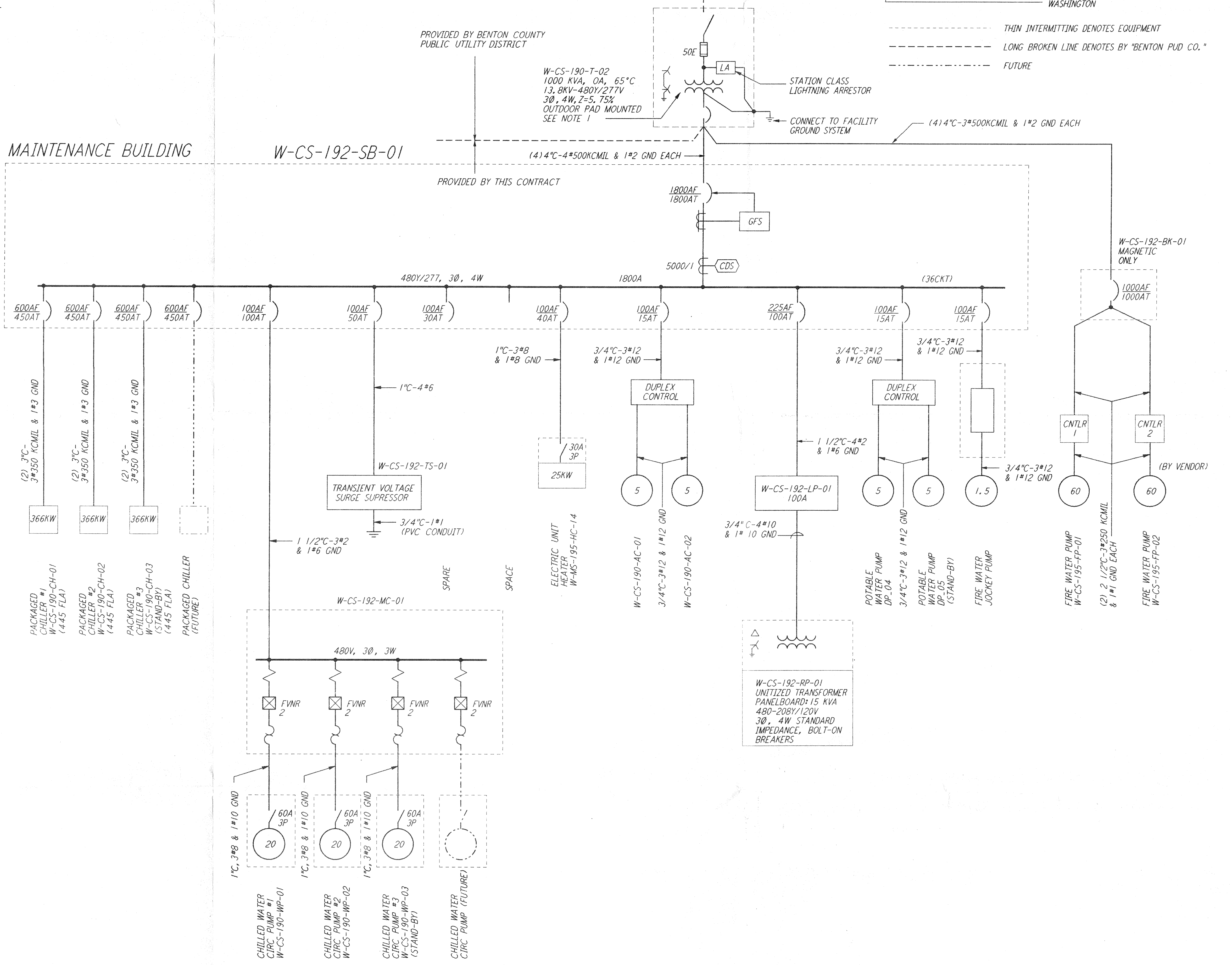
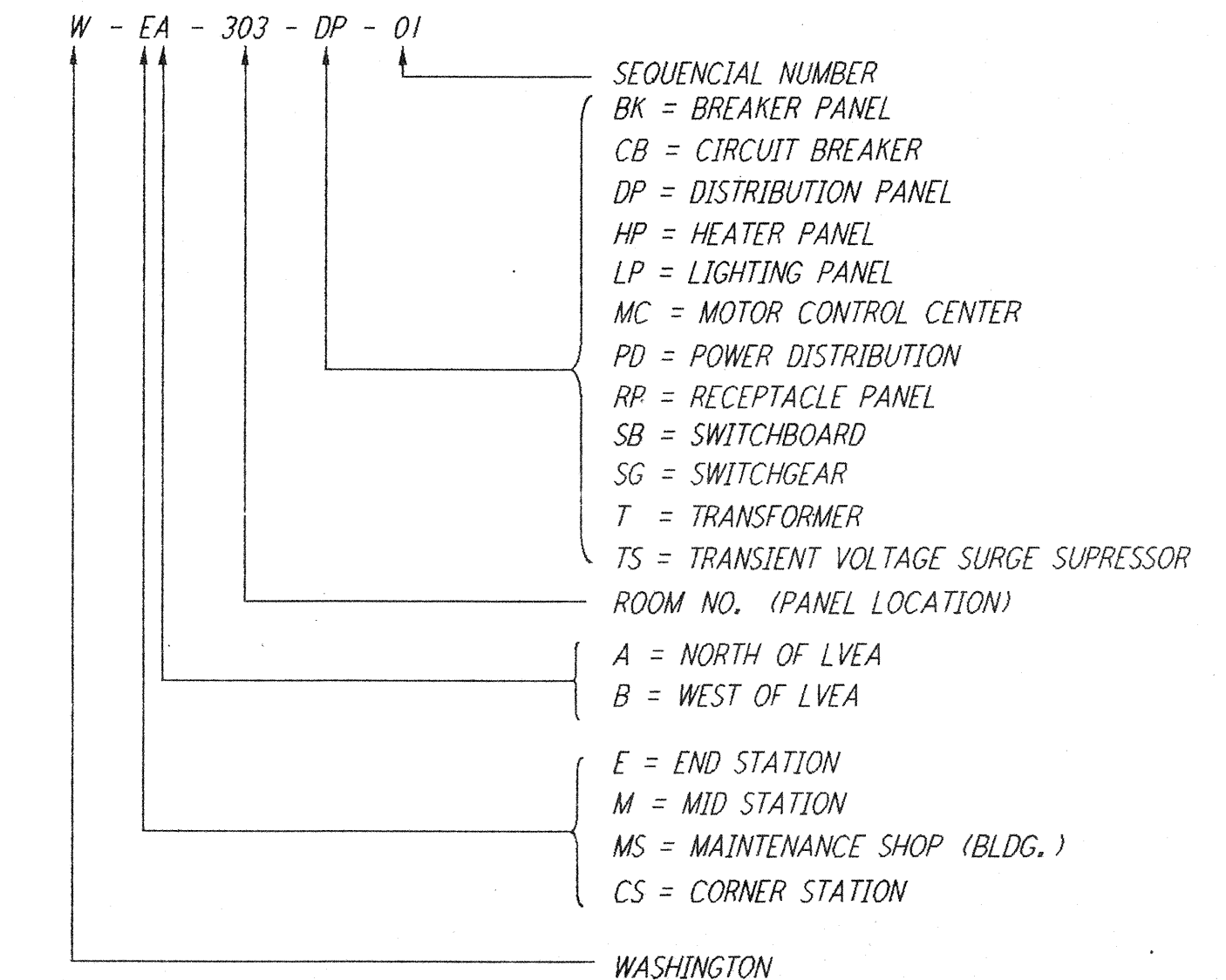
This document and the design it covers are the property of PARSONS. They are loaned only with the borrower's expressed written agreement that they will not be reproduced, copied, loaned, exhibited, or used in any other way, except by written consent from PARSONS to the borrower.



NOTES:

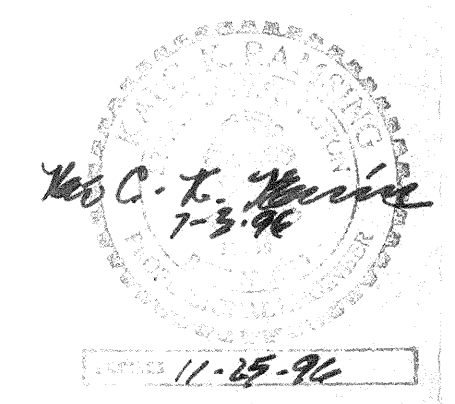
1. TRANSFORMER W-MS-190-T-02 SHALL BE SIZED PER N.E.C. ARTICLE 450-3D.
2. FOR ABBREVIATIONS AND ACRONYMS SEE DWG WA-E-001.
3. FOR ONE-LINE DIAGRAMS SYMBOLS SEE DWG WA-E-004.
4. ALL 13.8KV CABLE, GEAR VAULTS AND TRANSFORMERS BY OTHERS.
5. ALL CIRCUIT BREAKERS SHALL BE PROVIDED WITH LOCKING/LOCKABLE ACCESSORIES TO ENSURE THAT CIRCUITS ARE ENERGIZED BY AUTHORIZED PERSONNEL ONLY.
6. DISTRIBUTION AND LIGHTING PANELS SHALL BE FURNISHED WITH LOCKABLE DOORS, CIRCUIT BREAKERS SHALL BE PROVIDED WITH LOCKING/LOCKABLE ACCESSORIES TO ENSURE THAT CIRCUITS ARE ENERGIZED BY AUTHORIZED PERSONNEL ONLY.

LEGEND:



NO.	DATE	BY	CHKD	ENGR	PROJ	DESCRIPTION

ISSUED FOR CONSTRUCTION			
DRAWN	M. M.	6-25-96	
CHECKED		7-3-96	
ENGINEER		7-5-96	
PROJ		7-8-96	



PARSONS
 100 WEST WALNUT STREET
 PASADENA, CALIFORNIA

LIGO
 CALIFORNIA INSTITUTE OF TECHNOLOGY
 MASSACHUSETTS INSTITUTE OF TECHNOLOGY

LASER INTERFEROMETER
 GRAVITATIONAL-WAVE OBSERVATORY
 SITE NO. 1 - HANFORD, WASHINGTON

TITLE	SHEET NUMBER	CONTRACT NUMBER	PROJECT NUMBER
ELECTRICAL CORNER STATION 3 - INTERFEROMETER SINGLE LINE DIAGRAM	WA-E-501	PP150969	8094

LIGO-D860430-00-0