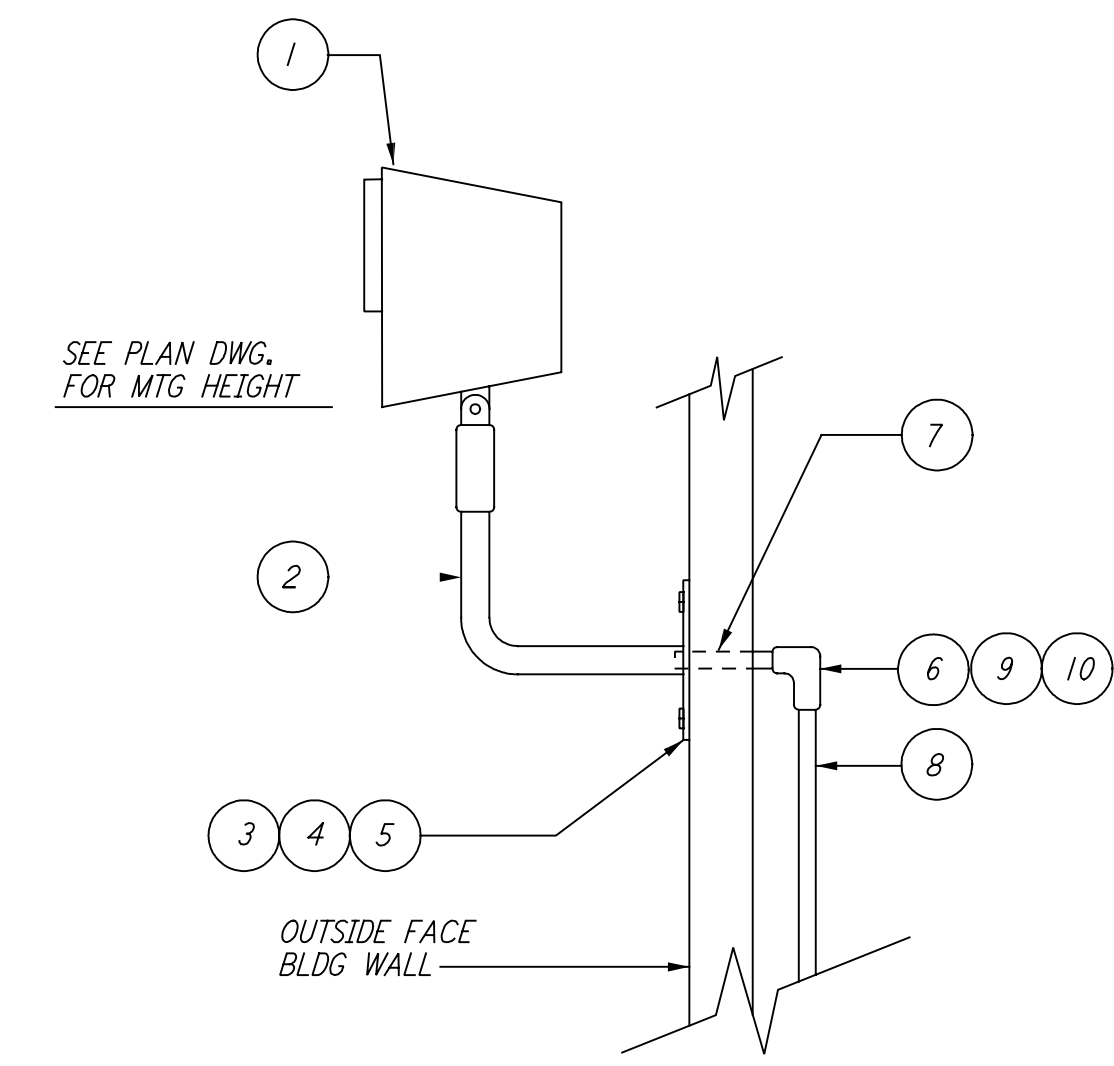


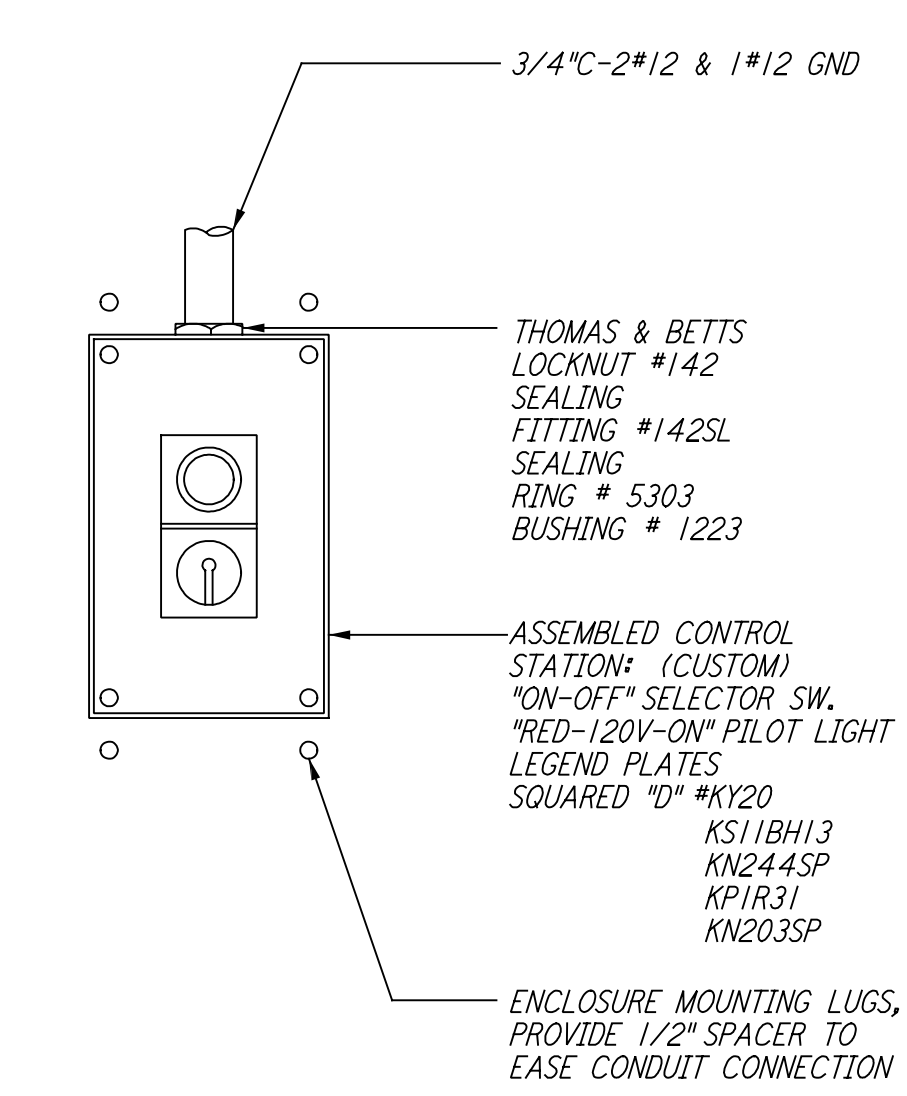
This document and the design it covers are the property of PARSONS. They are loaned only with the borrower's expressed written agreement that they will not be reproduced, copied, loaned, exhibited, or used in any other way, except by written consent from PARSONS to the borrower.

This document and the design it covers are the property of PARSONS. They are loaned only with the borrower's expressed written agreement that they will not be reproduced, copied, loaned, exhibited, or used in any other way, except by written consent from PARSONS to the borrower.

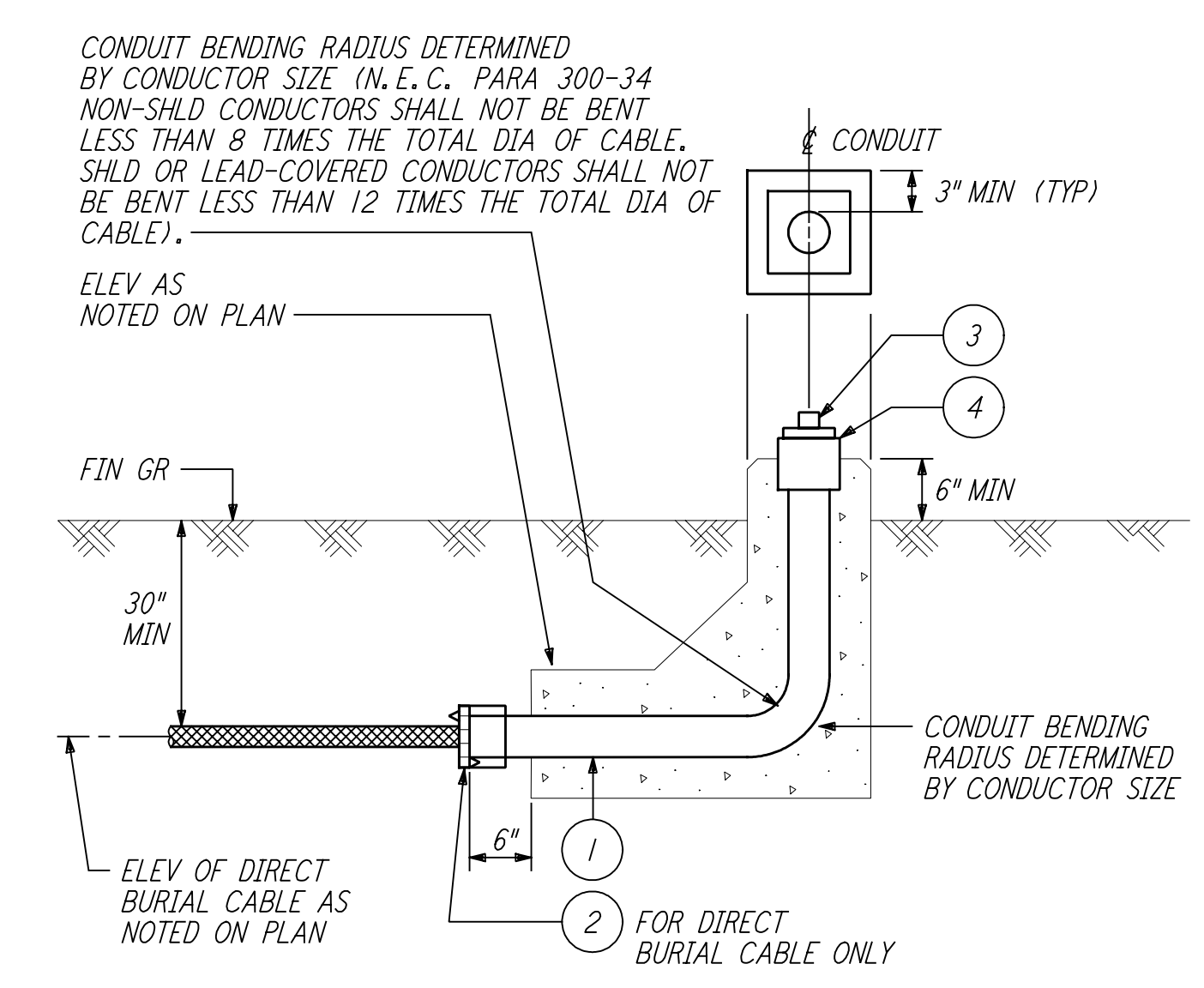


LIST OF MATERIAL		
ITEM NO.	QTY.	DESCRIPTION
1	1	LIGHTING FIXTURE-TYPE AS SPECIFIED ON PLAN
2	1	WALL MTG BRACKET FOR FLD LIGHT
3	4	BOLT HEX HEAD, 3/8"-16 X 1 1/2" LG GALV.
4	4	ANCHOR MASONARY 3/8"-16
5	4	LOCKWASHER SPRING 3/8" BOLT SST
6	1	CONDUIT FITTING 3/4"
7	AR	CONDUIT 3/4" RIGID STEEL GALV
8	AR	CONDUIT 3/4" RIGID STEEL GALV
9	1	CND FTG. COVER, CAST 3/4"
10	1	CND FTG. COVER GASKET, NEOPRENE. 3/4"

FLOODLIGHT MOUNTING DETAIL (2) REF.  
 N. T. S.

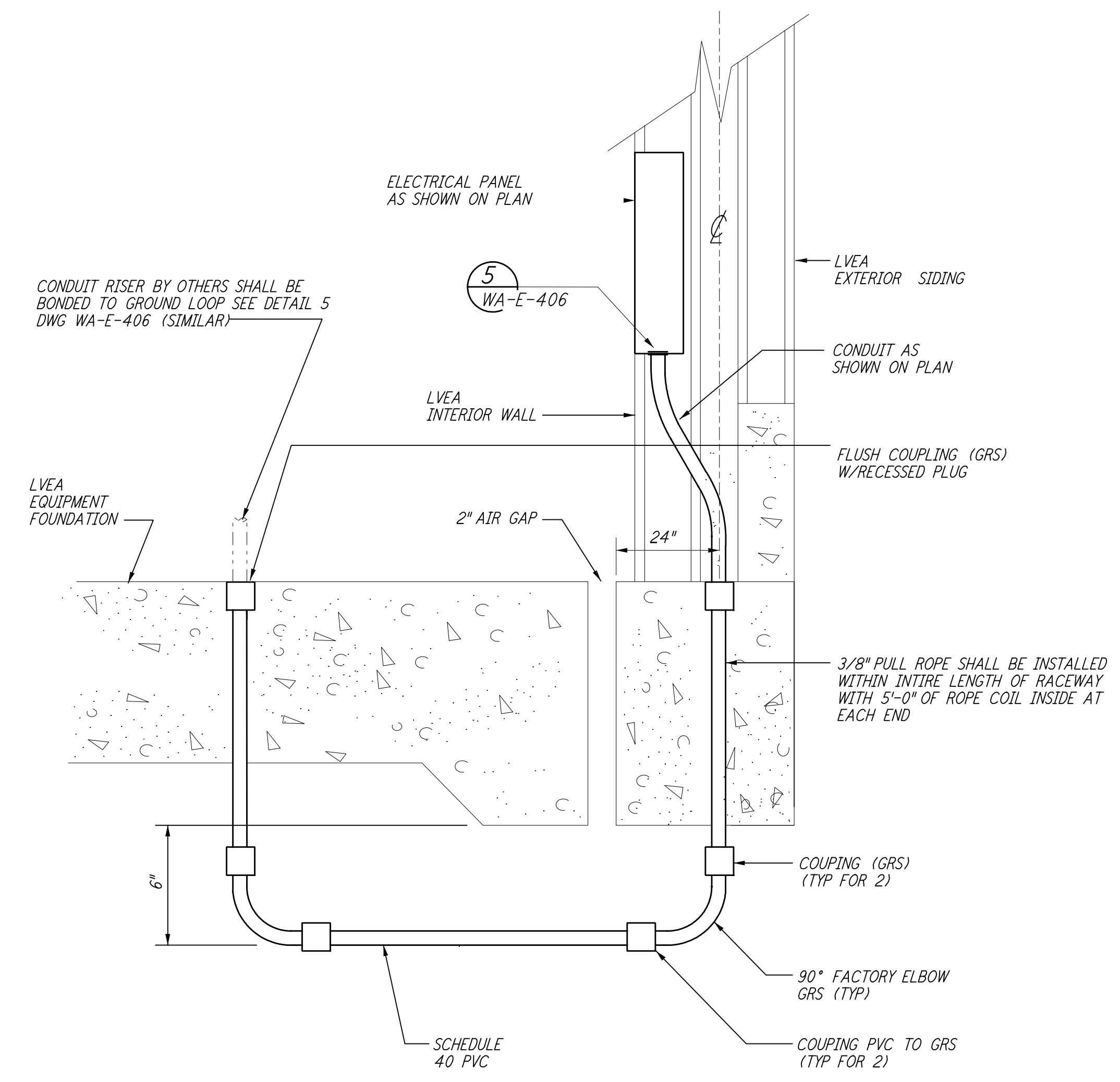


DETAIL (3) REF.  
 N. T. S.



LIST OF MATERIAL		
ITEM NO.	QTY.	DESCRIPTION
1	AR	CONDUIT, RIGID GALVANIZED STEEL, SIZE PER PLAN
2	1	CONDUIT BUSHING, NON-INSULATED GALV, PER CONDUIT SIZE
3	1	PLUG, SO HD RIGID ALUM, PER CONDUIT SIZE
4	1	CONDUIT COUPLING, RIGID GALVANIZED STEEL, PER CONDUIT SIZE

CONDUIT STUB-UP (4) REF.  
 N. T. S.



LVEA CONDUIT FLOOR RISER (5) REF.  
 N. T. S.

REFERENCES		REVISIONS		ISSUED FOR AS-BUILT	
DRAWING NO.	DESCRIPTION	NO.	DATE	BY	CHKD
		1	6-15-98	J. G.	

ISSUED FOR CONSTRUCTION		
DRAWN	DATE	BY
M. M.	6-25-96	
J. K.	7-3-96	
K. R.	7-3-96	
M. D. W.	7-8-96	

**AS-BUILT DRAWINGS**

**PARSONS**  
 100 WEST WALNUT STREET  
 PASADENA, CALIFORNIA

**LIGO**  
 CALIFORNIA INSTITUTE OF TECHNOLOGY  
 MASSACHUSETTS INSTITUTE OF TECHNOLOGY

LASER INTERFEROMETER  
 GRAVITATIONAL-WAVE OBSERVATORY  
 SITE NO. 1 - HANFORD, WASHINGTON

TITLE	SCALE	DRAWING NUMBER	PROJECT NUMBER
ELECTRICAL SECTIONS AND DETAILS	NONE	PP150969	8094
SHEET NUMBER		REVISIONS	
WA-E-409			

LIGO-D960429-01-0