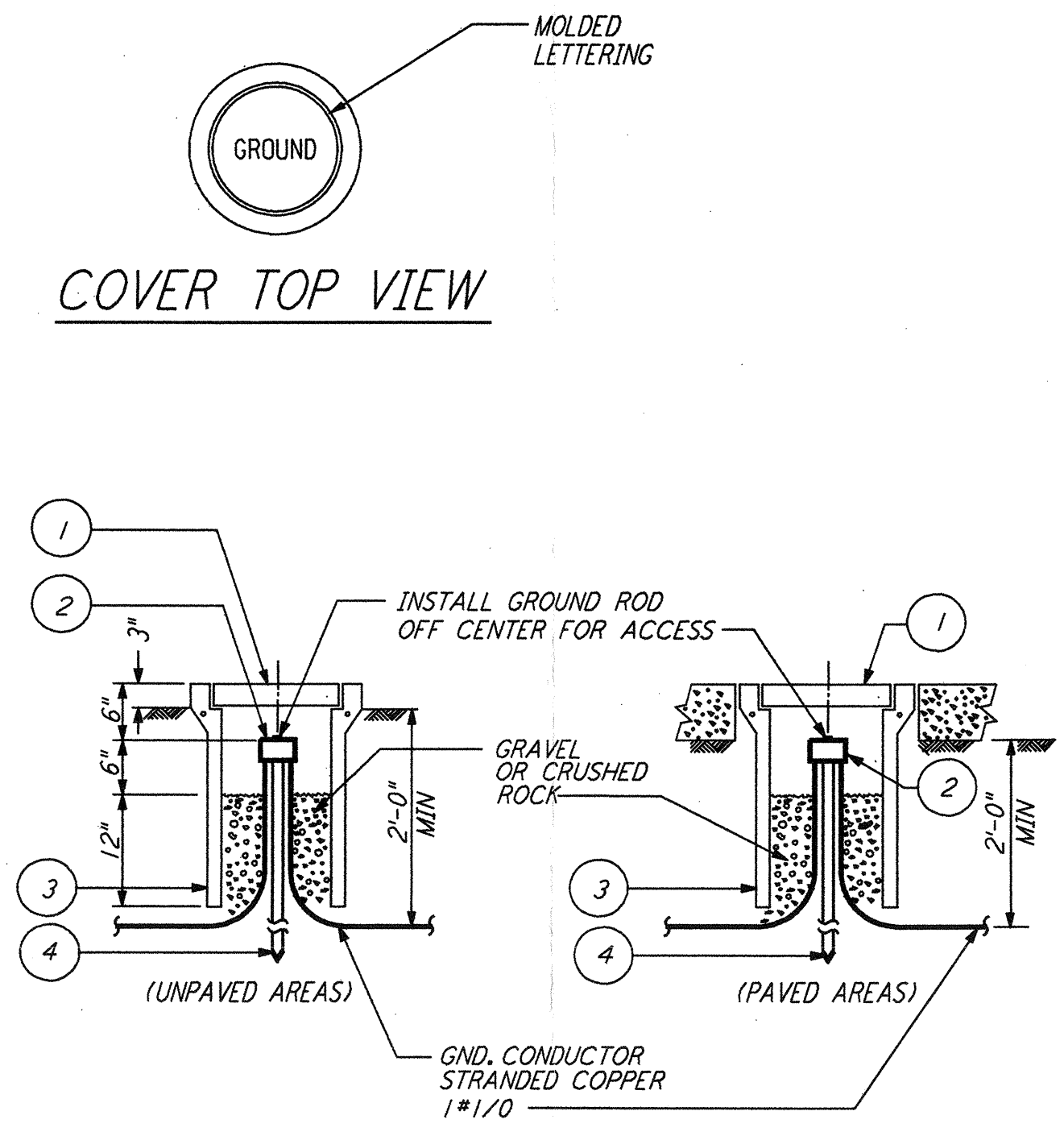


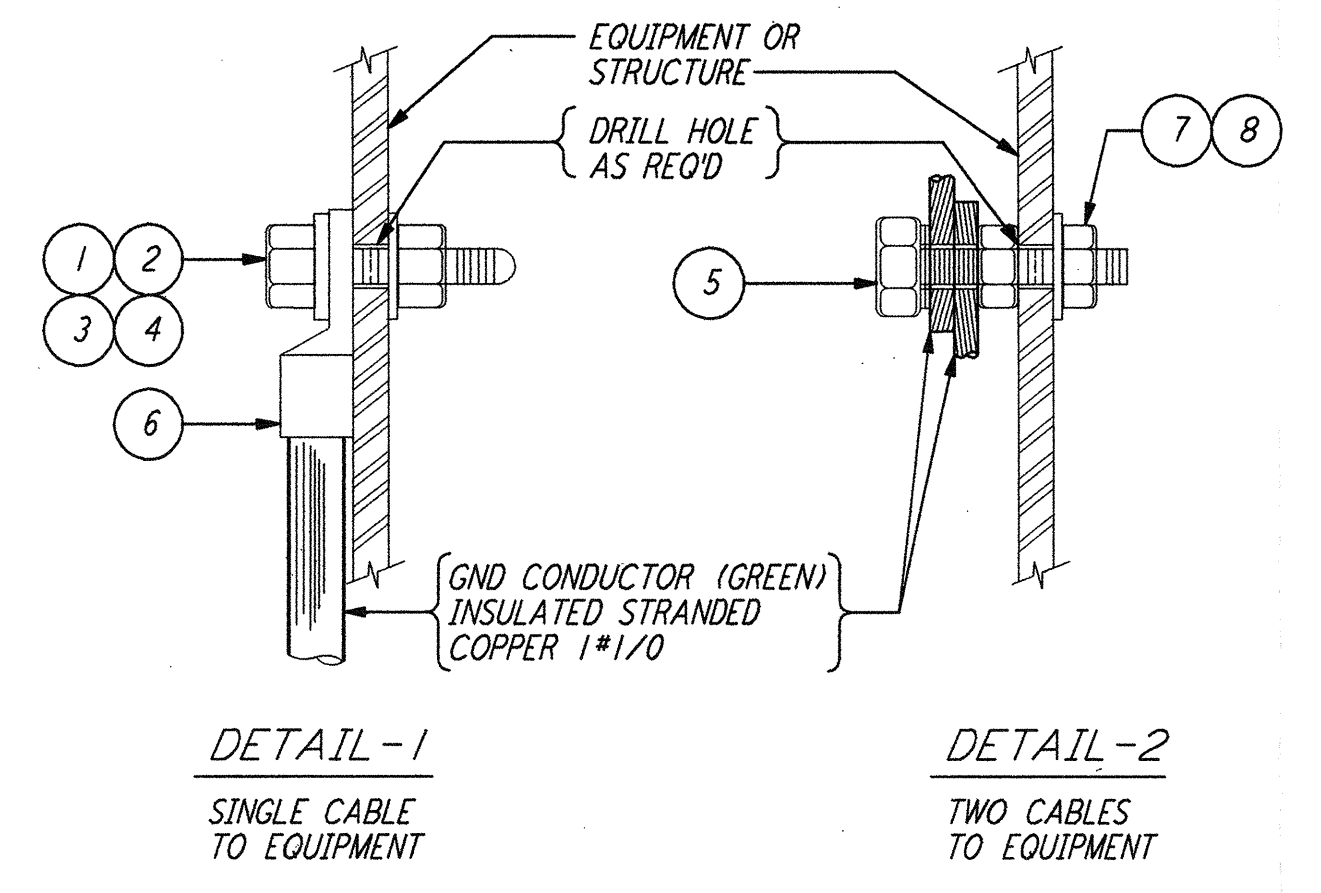
GROUNDING CONNECTION BOX (1) REF
 N. T. S.



LIST OF MATERIAL

| ITEM NO. | QTY | DESCRIPTION |
|----------|-----|---|
| 1 | 1 | BROOKS #9 CONCRETE COVER WT=11 LBS WITH 9 GAGE RE-BAR |
| 2 | 1 | CONNECTOR 3 WIRES X 3/4\"/> |

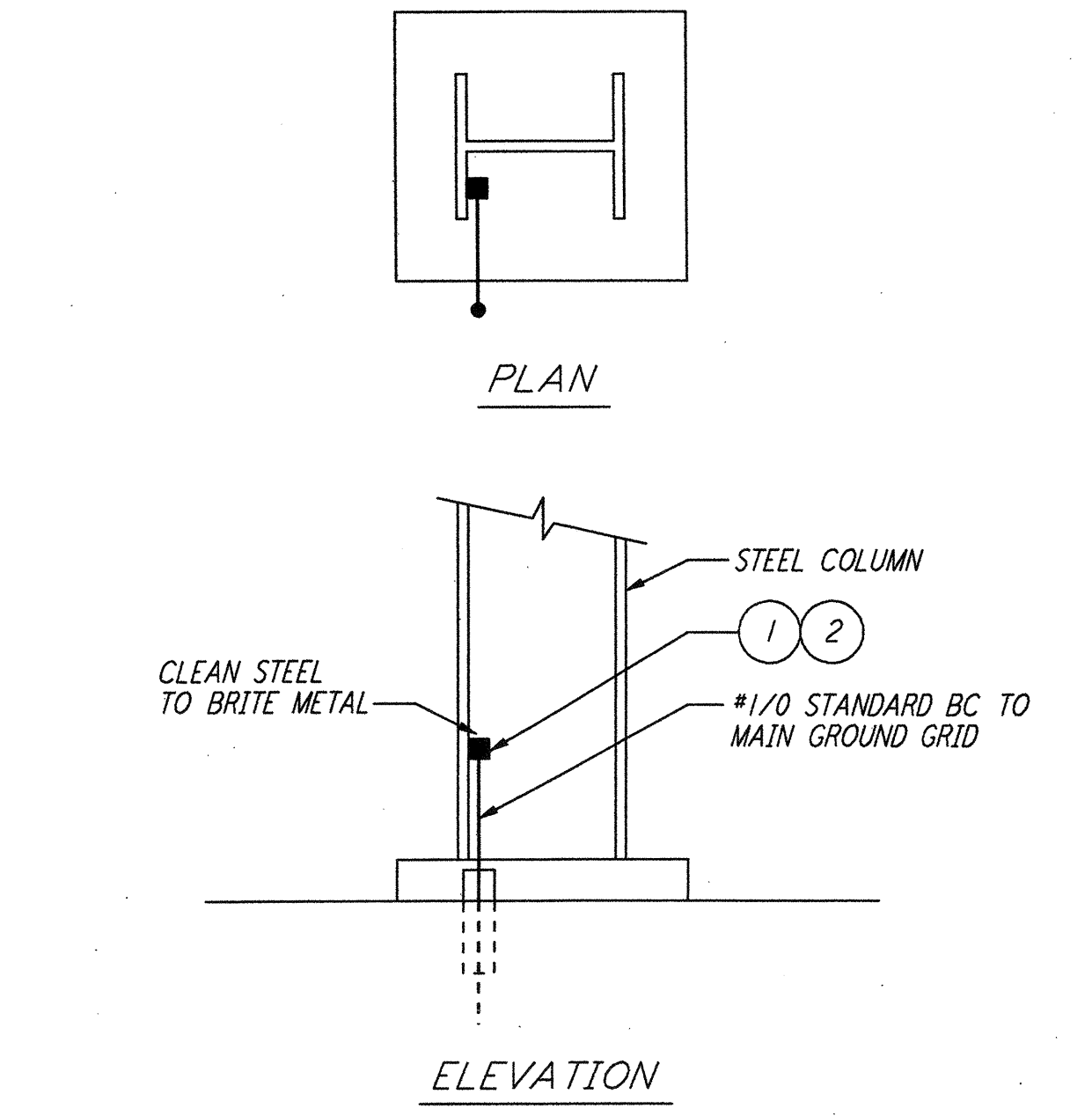
GROUND WELL (2) REF
 N. T. S.



LIST OF MATERIAL

| ITEM NO. | QTY | DESCRIPTION |
|----------|-----|---|
| 1 | 1 | BOLT, HEX HD SST (SIZE AS REQD) |
| 2 | 1 | NUT, HEX, SST (SIZE AS REQD) |
| 3 | 1 | FLAT WASHER, RD SST (SIZE AS REQD) |
| 4 | 1 | LOCK WASHER, SPRING SST (SIZE AS REQD) |
| 5 | 1 | SERVIT POST, TWO #2-#1/0 WIRES SHORT STUD BURNDY TYPE K2C25 |
| 6 | 1 | GND CONNECTOR - STRANDED BURNDY QUICK LUG OA |
| 7 | 1 | NUT, 1/2\"/> |

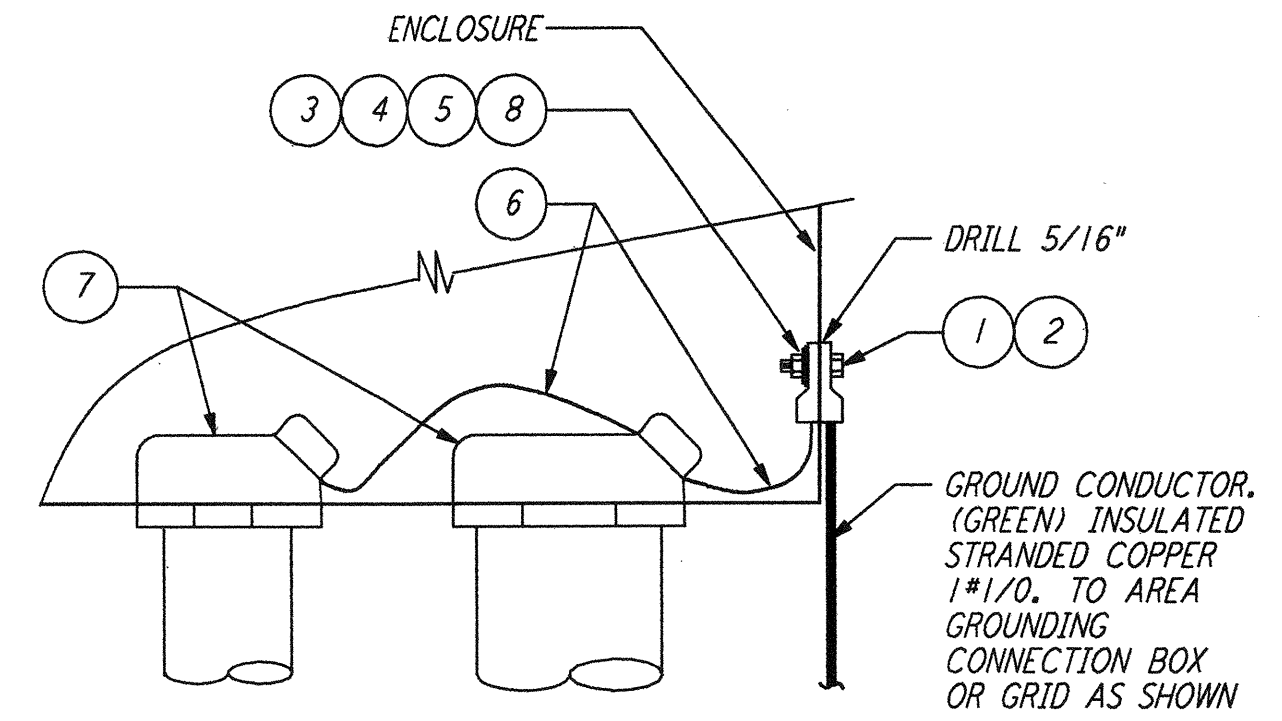
EQUIPMENT GROUNDING (3) REF
 N. T. S.



LIST OF MATERIAL

| ITEM NO. | QTY | DESCRIPTION |
|----------|-----|-------------------------------------|
| 1 | 1 | CADWELD MOLD #HDVBC-2C |
| 2 | 1 | CARTRIDGE STANDARD POWDER 200 GRAMS |

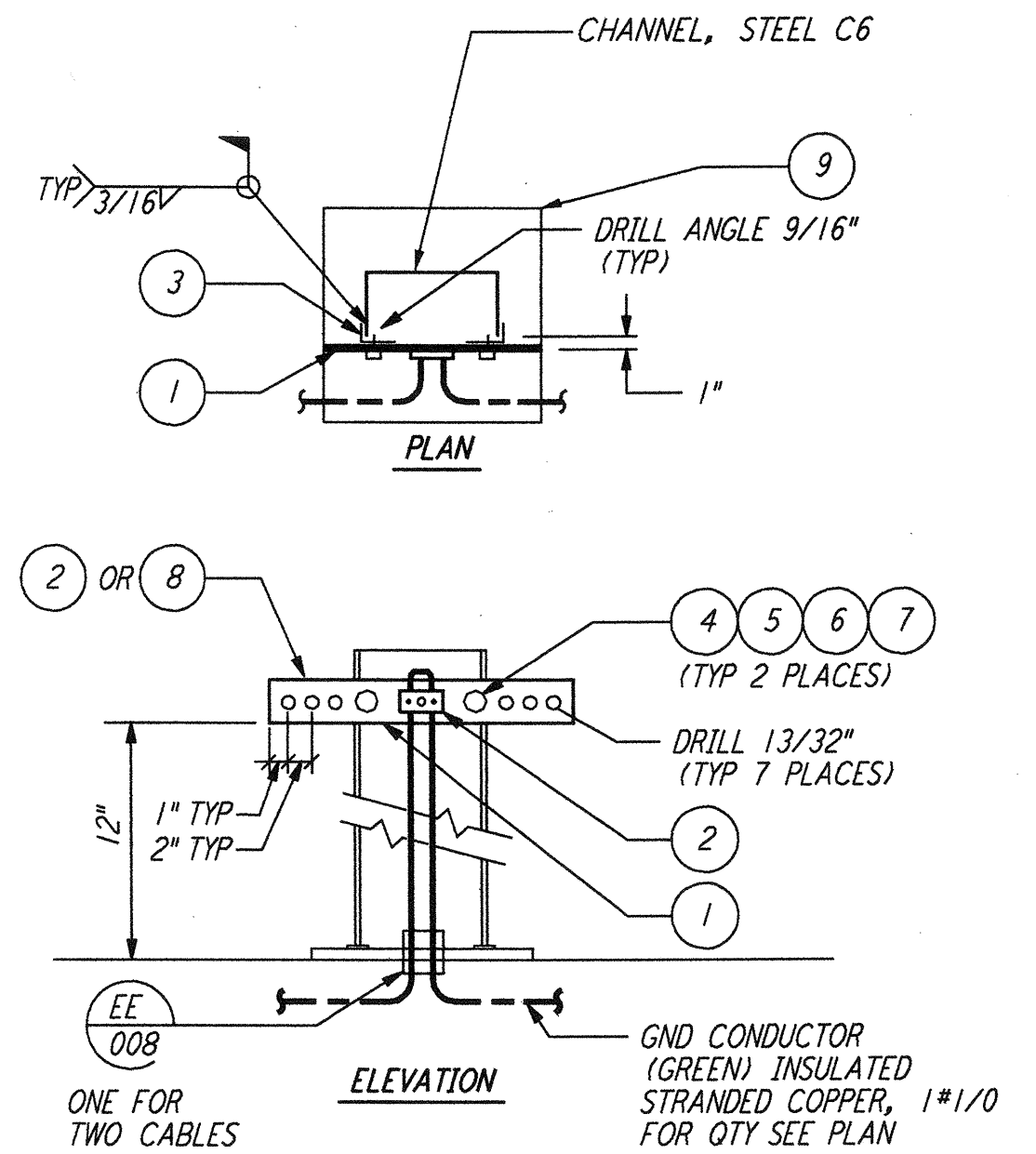
EXOTHERMIC WELD TO STRUCTURE (4) REF
 N. T. S.



LIST OF MATERIAL

| ITEM NO. | QTY | DESCRIPTION |
|----------|-----|-------------------------------|
| 1 | 1 | LUG, #1/0-#2/0 WIRE X 1/4\"/> |

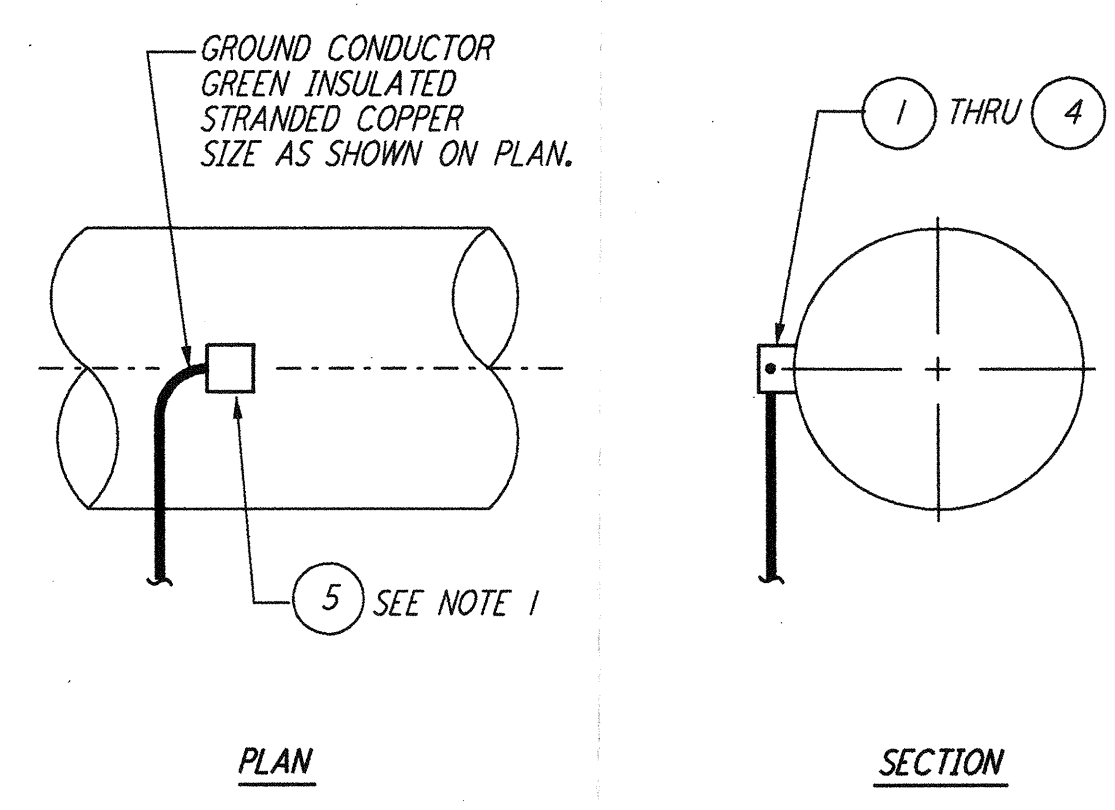
CABINET OR BOX GROUNDING (5) REF
 N. T. S.



LIST OF MATERIAL

| ITEM NO. | QTY | DESCRIPTION |
|----------|-----|---------------------|
| 1 | 1 | COPPER BUS, 1/4\"/> |

GROUNDING CONNECTION PLATE (6) REF
 N. T. S.

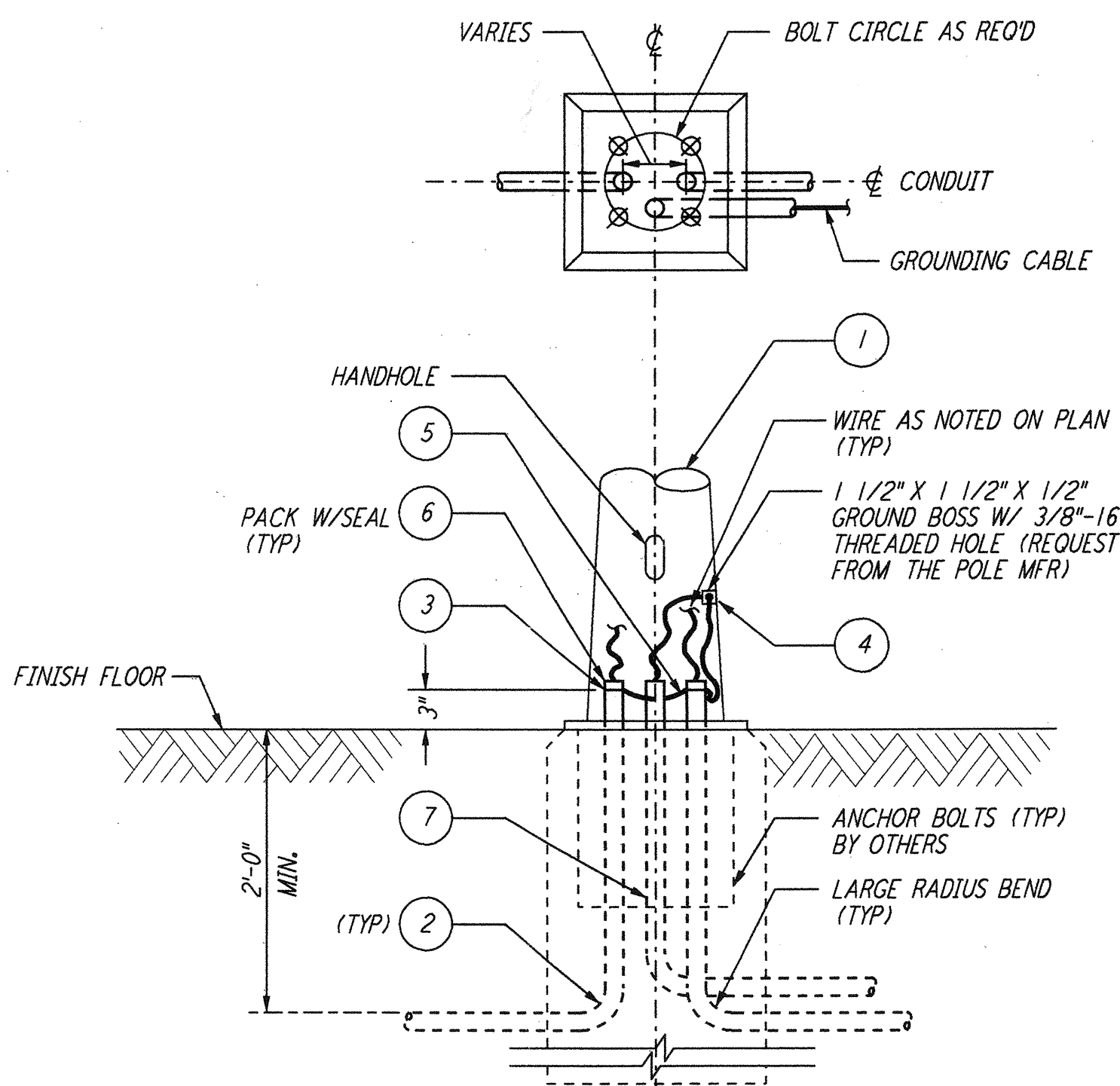


NOTE:
 1. PROTECTIVE COATING ON PIPE SHALL BE RESTORED BY FIELD.

LIST OF MATERIAL

| ITEM NO. | QTY | DESCRIPTION |
|----------|-----|-----------------------|
| 1 | AR | MOLD HORIZ #2/0-4\"/> |

GROUNDING CONNECTION TO HORIZONTAL STEEL WATER PIPE (7) REF
 N. T. S.



LIST OF MATERIAL

| ITEM NO. | QTY | DESCRIPTION |
|----------|-----|--|
| 1 | 1 | LIGHTING POLE - AS SPECIFIED |
| 2 | AR | CONDUIT, RIGID |
| 3 | 2 | CONDUIT GND BUSHING, #8 WIRE, O.2. TYPE ABLG |
| 4 | 1 | GND CONN SERVIT POST, BURNDY TYPE K2C23B1 |
| 5 | 3 | WIRE, #8 STRANDED CU THW GREEN |
| 6 | AR | SEALING COMPOUND, 3M BRAND CP25N/S |
| 7 | AR | SCHEDULE 40 PVC 1 1/4\"/> |

LIGHTING STANDARD BASE ASSEMBLY (8) REF
 N. T. S.

| NO. | DATE | BY | CHKD | ENGR | PROJ | DESCRIPTION |
|-----|---------|-------|------|------|------|---------------------|
| 1 | 6-15-98 | J. G. | M. | M. | P.P. | ISSUED FOR AS-BUILT |

ISSUED FOR CONSTRUCTION
 DRAWN: M. M. 6-25-96
 CHECKED: J. K. 7-3-96
 ENGINEER: K. R. 7-3-96
 PROJ: M. D. W. 7-8-96

AS-BUILT DRAWINGS

PARSONS
 100 WEST WALNUT STREET
 PASADENA, CALIFORNIA

LIGO
 CALIFORNIA INSTITUTE OF TECHNOLOGY
 MASSACHUSETTS INSTITUTE OF TECHNOLOGY

LIGO-D960426-01-O
 LASER INTERFEROMETER
 GRAVITATIONAL-WAVE OBSERVATORY
 SITE NO. 1 - HANFORD, WASHINGTON

ELECTRICAL GROUNDING DETAILS SHEET 2

SCALE: NONE CONTRACT NUMBER: PP150969 PROJECT NUMBER: 8094
 SHEET NUMBER: WA-E-406

This document and the design it covers are the property of PARSONS. They are loaned only with the borrower's expressed written agreement that they not be reproduced, copied, loaned, exhibited, or used in any other way, except by written consent from PARSONS to the borrower.

E
 D
 C
 B
 A
 w:\juli 09 12:48:00 1998 C:\PLOT\LOGUE\63\13662.DWG 520085 (A:\V3662\vee406a.plt) I:\G0\WAF_BDR