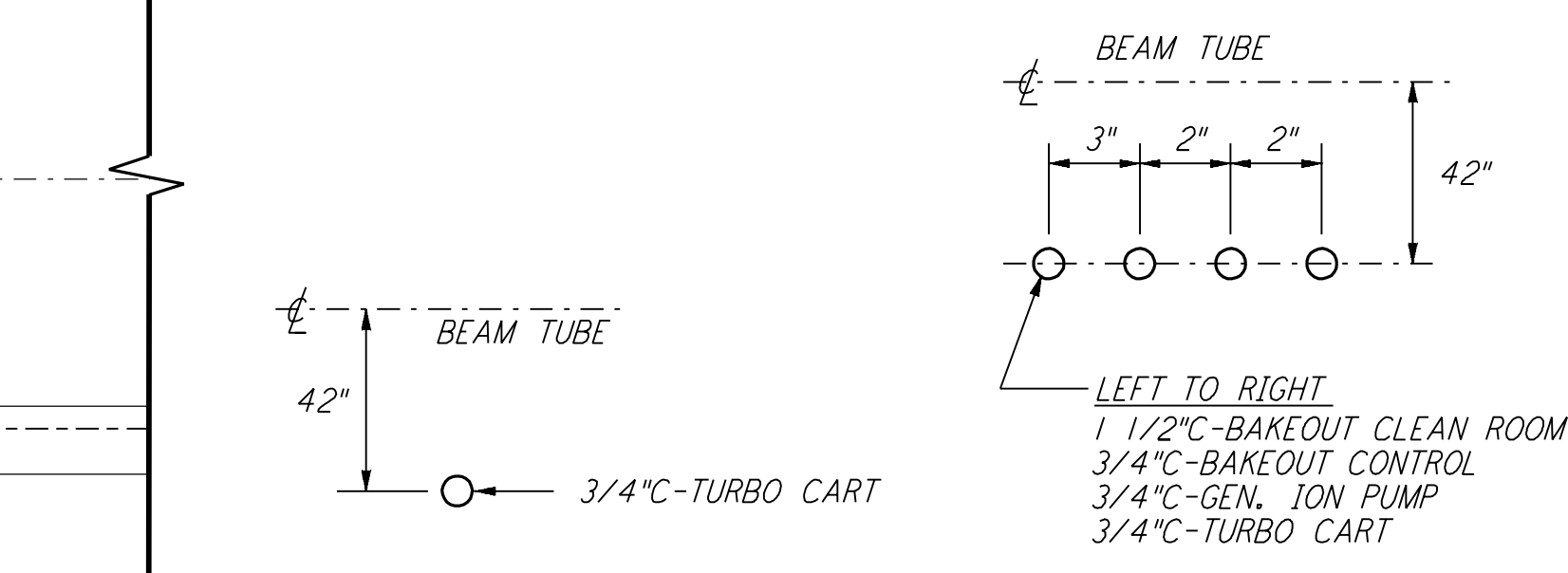
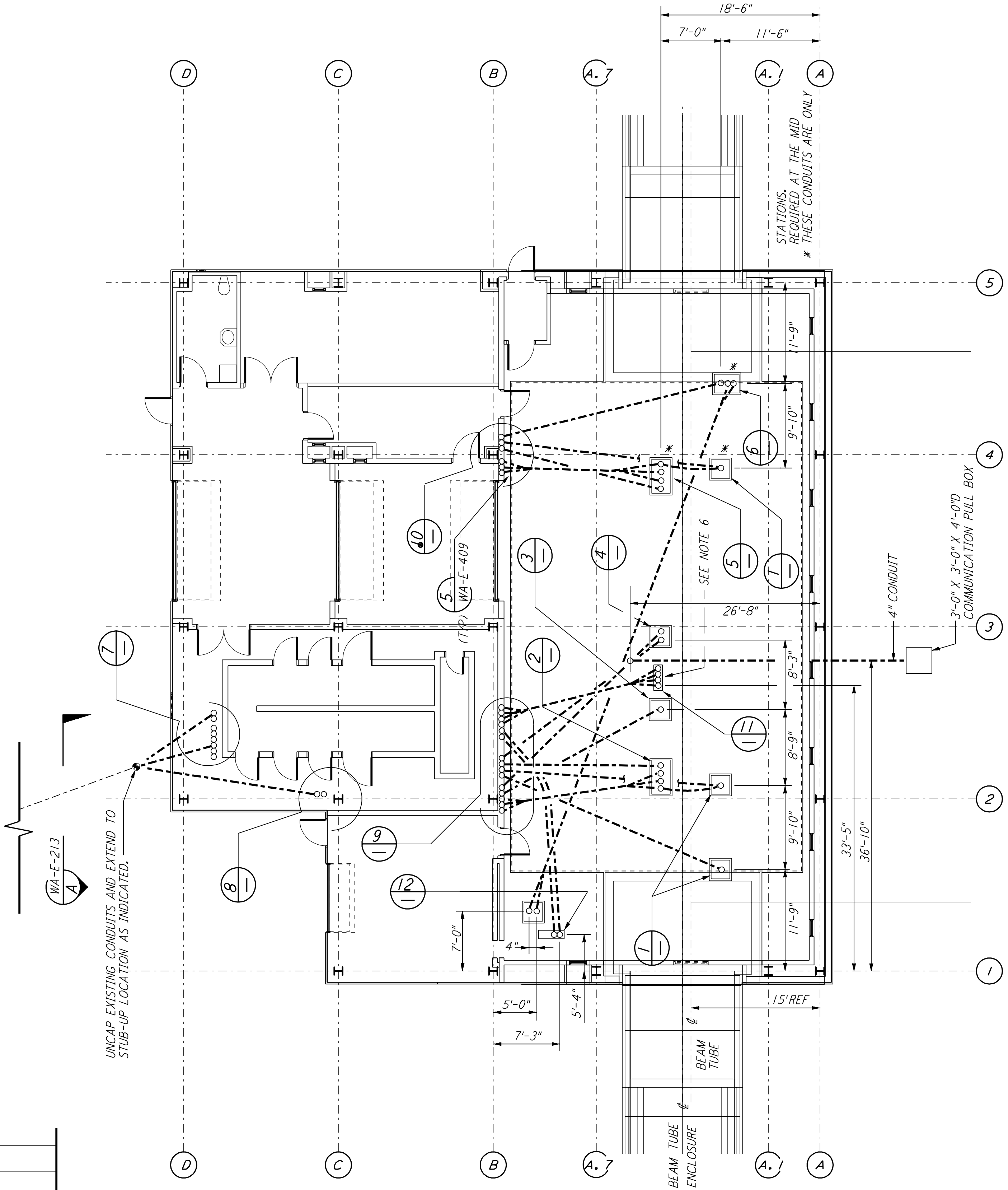
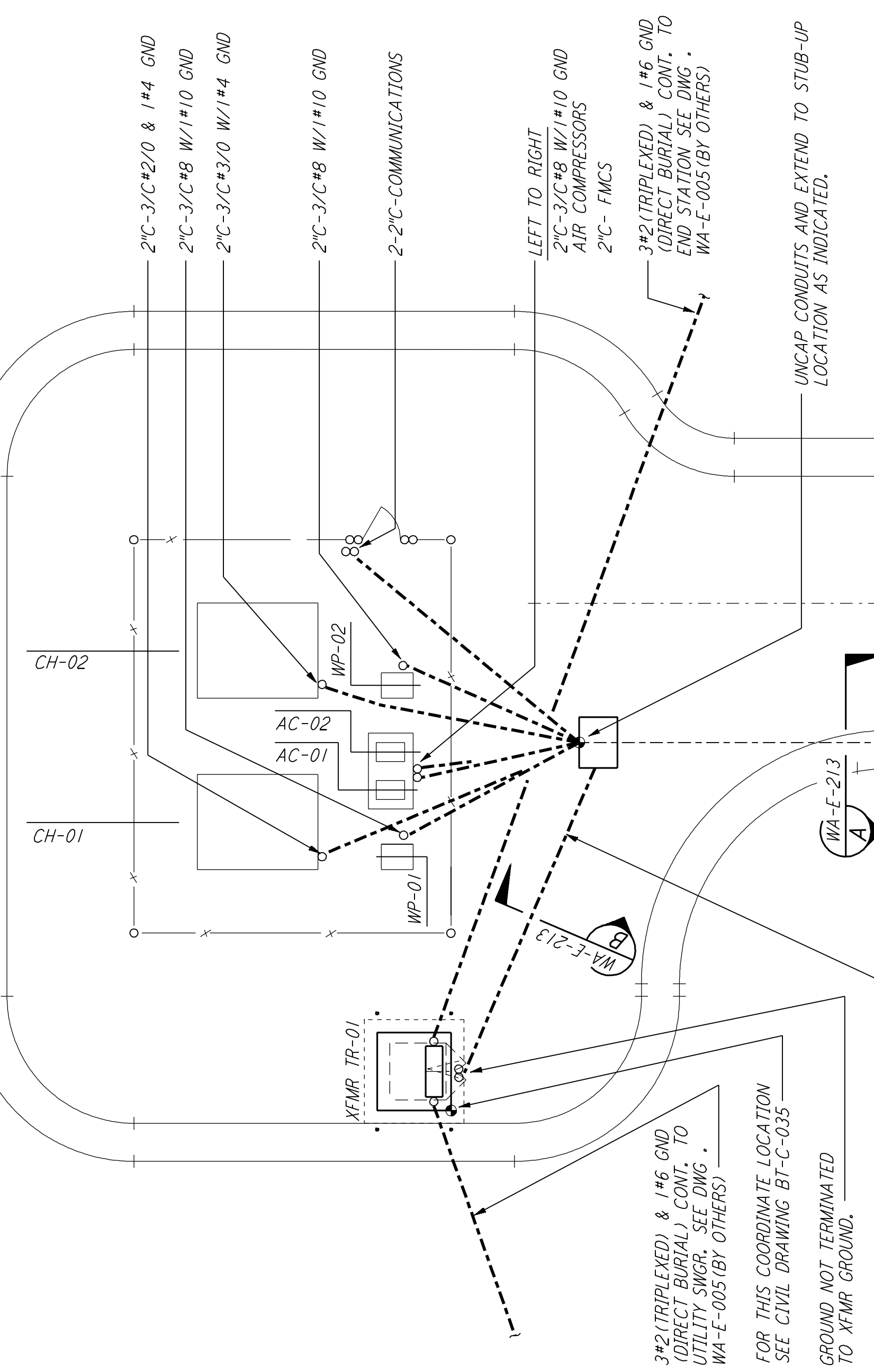
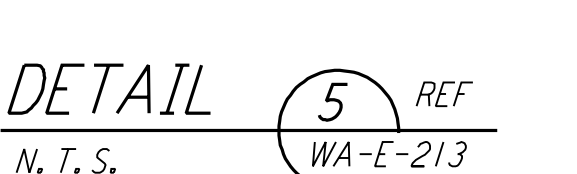


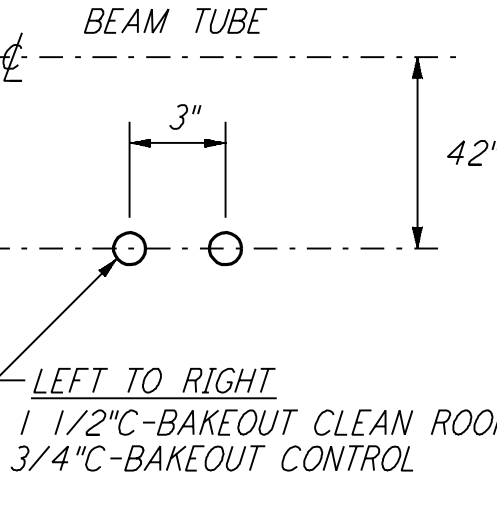
DUCT BANK SECTION A REF  
 N.T.S. WA-E-213



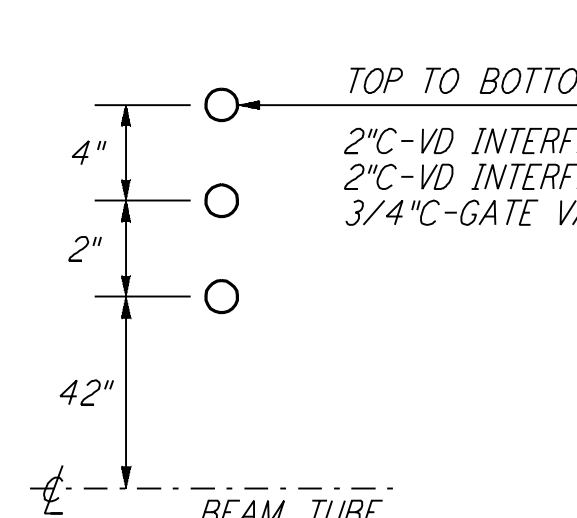
DETAIL 3 REF  
 N.T.S. WA-E-213



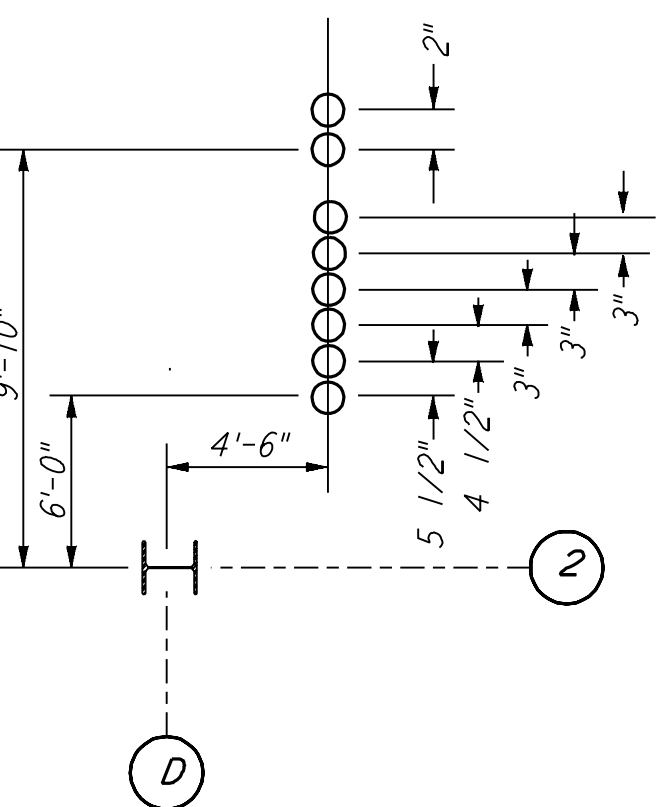
DETAIL 5 REF  
 N.T.S. WA-E-213



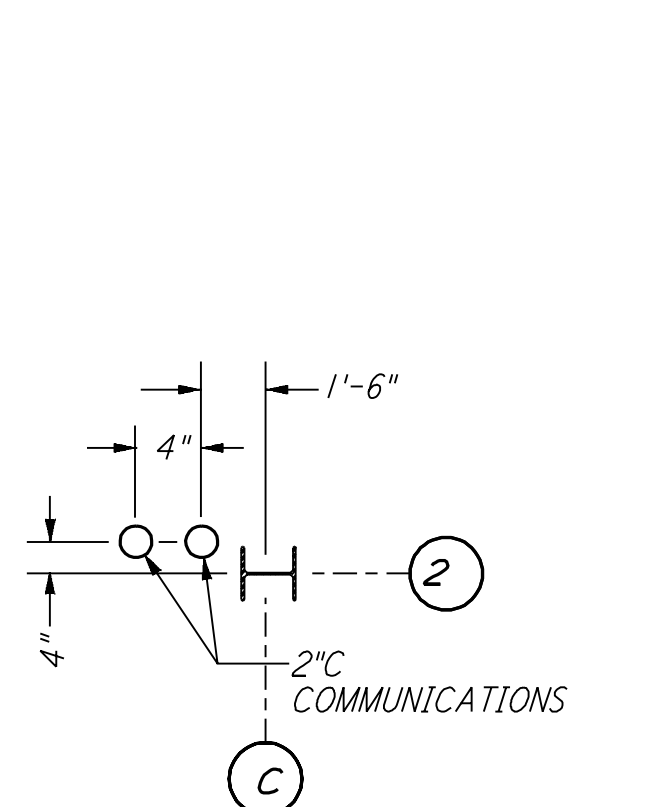
DETAIL 4 REF  
 N.T.S. WA-E-213



DETAIL 6 REF  
 N.T.S. WA-E-213

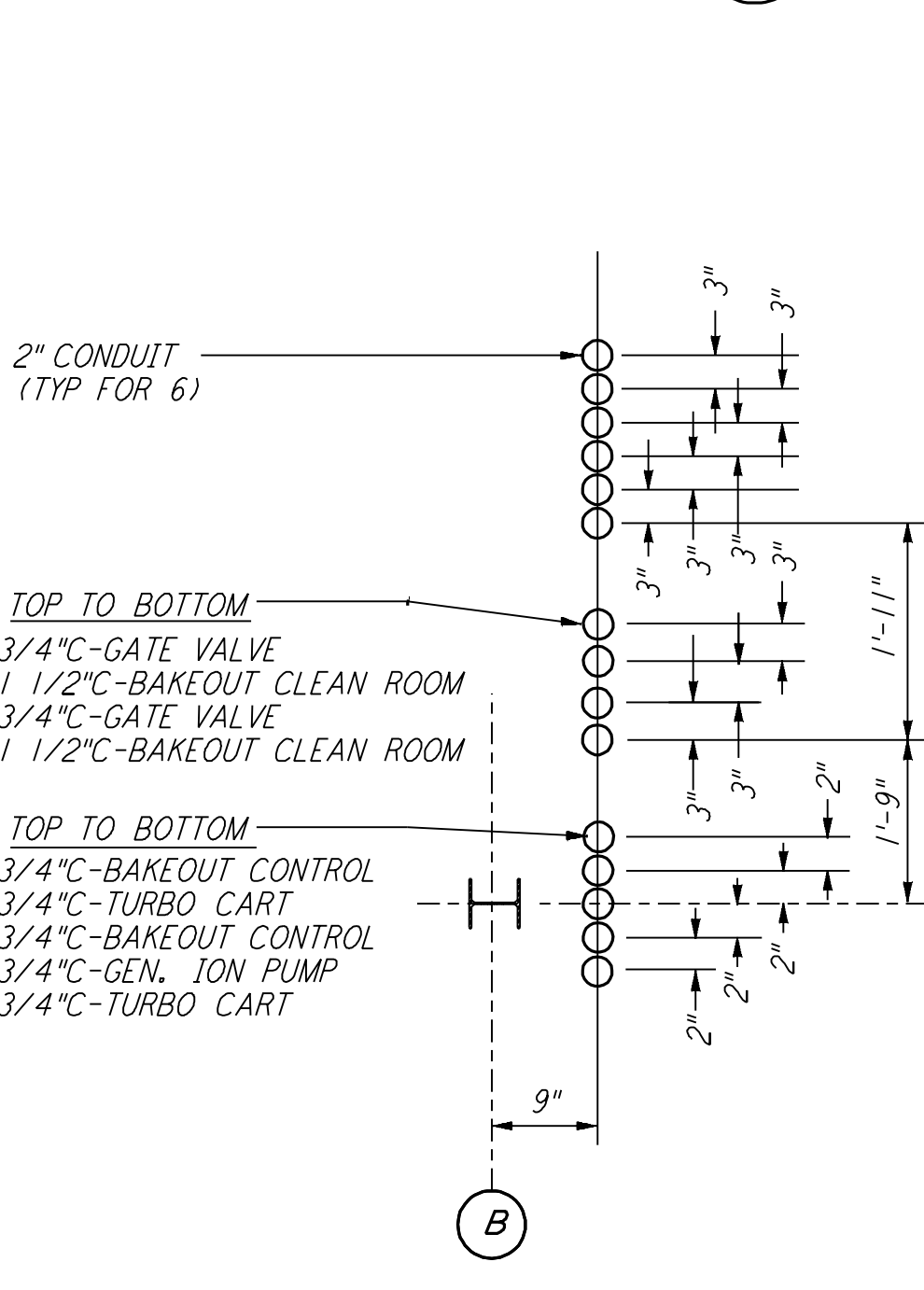


DETAIL 7 REF  
 N.T.S. WA-E-213

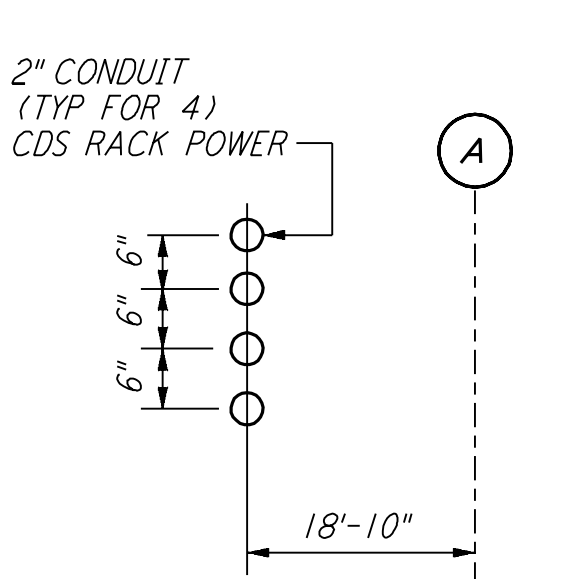


DETAIL 8 REF  
 N.T.S. WA-E-213

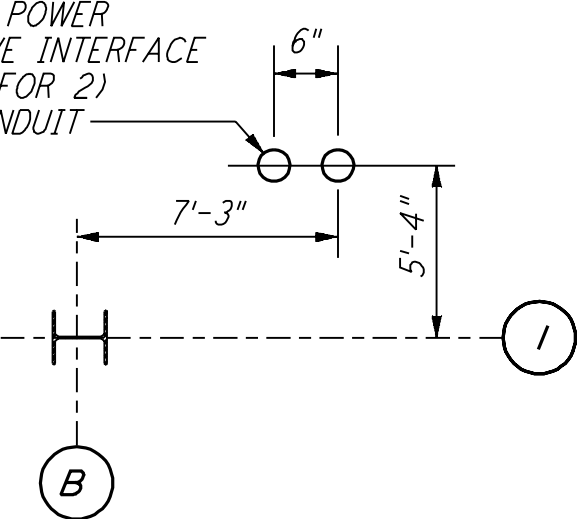
DUCT BANK SECTION B REF  
 N.T.S. WA-E-213



DETAIL 9 REF  
 N.T.S. WA-E-213



DETAIL 11 REF  
 N.T.S. WA-E-213



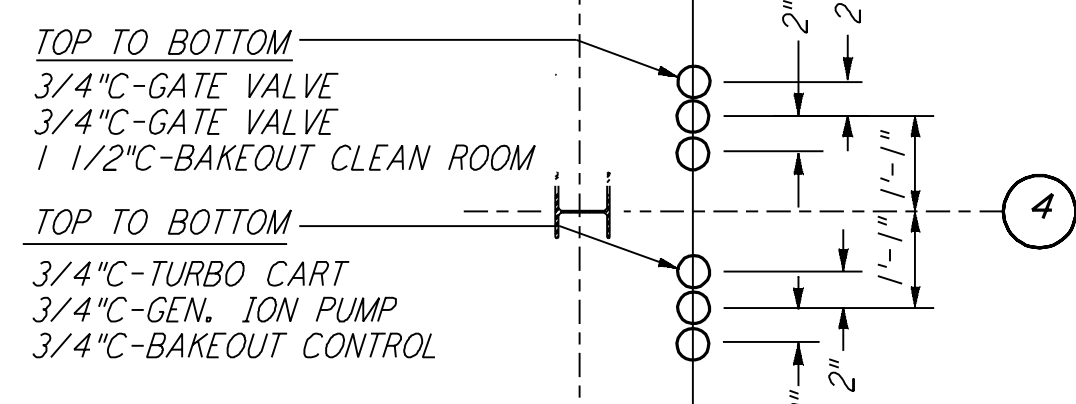
DETAIL 12 REF  
 N.T.S. WA-E-213

**GENERAL NOTES:**

1. FOR STANDARD SYMBOLS, ABBREVIATIONS AND ACRONYMS SEE DWG. WA-E-001.
2. FOR ELECTRICAL SYMBOLS SEE DWG. WA-E-002.
3. FOR STANDARD INSTALLATION DETAILS SEE DWG. WA-E-405 THRU WA-E-407.
4. FOR CABLE TYPE DESCRIPTION SEE DWG. WA-E-007.
5. ALL RUNS ARE SHOWN DIAGRAMMATICALLY ONLY, CONTRACTOR SHALL COORDINATE INSTALLATION WITH OTHER DISCIPLINES.
6. COORDINATES OF CDS POWER CONDUIT STUB-UPS SHALL BE COORDINATED WITH THE VACUUM EQUIPMENT VENDOR.

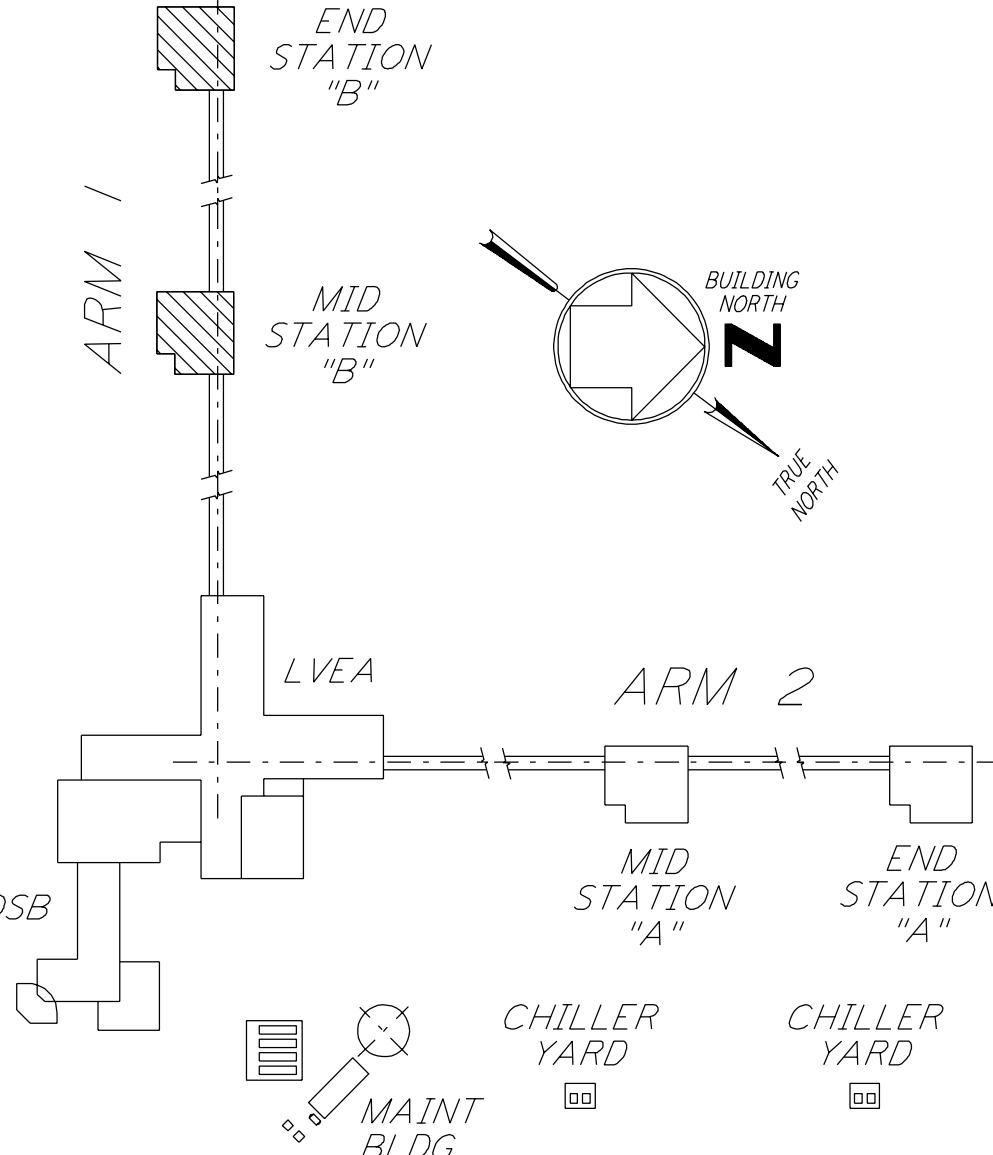
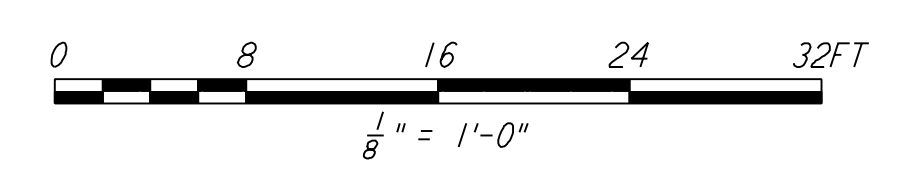
**NOTES:**

1. FOR NODE NUMBERING SCHEDULE SEE DWG. WA-E-008.
2. THE WORK MARKED BY HAND ON THIS DRAWING IN REVISION "A" DATED 4-15-96 HAS BEEN RESTORED TO THIS CONTRACT.



DETAIL 10 REF  
 N.T.S. WA-E-213

SEE NOTE 2.



KEY PLAN  
**LIGO-D960419-02-0**

NO.	DATE	BY	CHKD	ENGR	PROJ	DESCRIPTION
2	6-15-98	J. G.				ISSUED FOR AS-BUILT
1	3-21-97	J. G.	K. R.	K. R.	TDM	GENERAL REVISIONS

ISSUED FOR CONSTRUCTION		
DRAWN	M. M.	6-25-96
CHECKED	J. K.	7-3-96
ENGINEER	K. R.	7-3-96
PROJ	M. D. W.	7-8-96

**AS-BUILT DRAWINGS**

**PARSONS**  
 100 WEST WALNUT STREET  
 PASADENA, CALIFORNIA

**LIGO**  
 CALIFORNIA INSTITUTE OF TECHNOLOGY  
 MASSACHUSETTS INSTITUTE OF TECHNOLOGY

LASER INTERFEROMETER  
 GRAVITATIONAL-WAVE OBSERVATORY  
 SITE NO. 1 - HANFORD, WASHINGTON

TITLE	SCALE	CONTRACT NUMBER	PROJECT NUMBER
ELECTRICAL MID & END B STATIONS UNDERGROUND PLAN	AS NOTED	PP150969	8094
SHEET NUMBER		REVISIONS	
<b>WA-E-213</b>		2	

This document and the design it covers are the property of PARSONS. They are loaned only with the borrower's expressed written agreement that they will not be reproduced, copied, loaned, exhibited, or used in any other way, except by written consent from PARSONS to the borrower.

I:\ligo\site\ee\wae213.d3z