

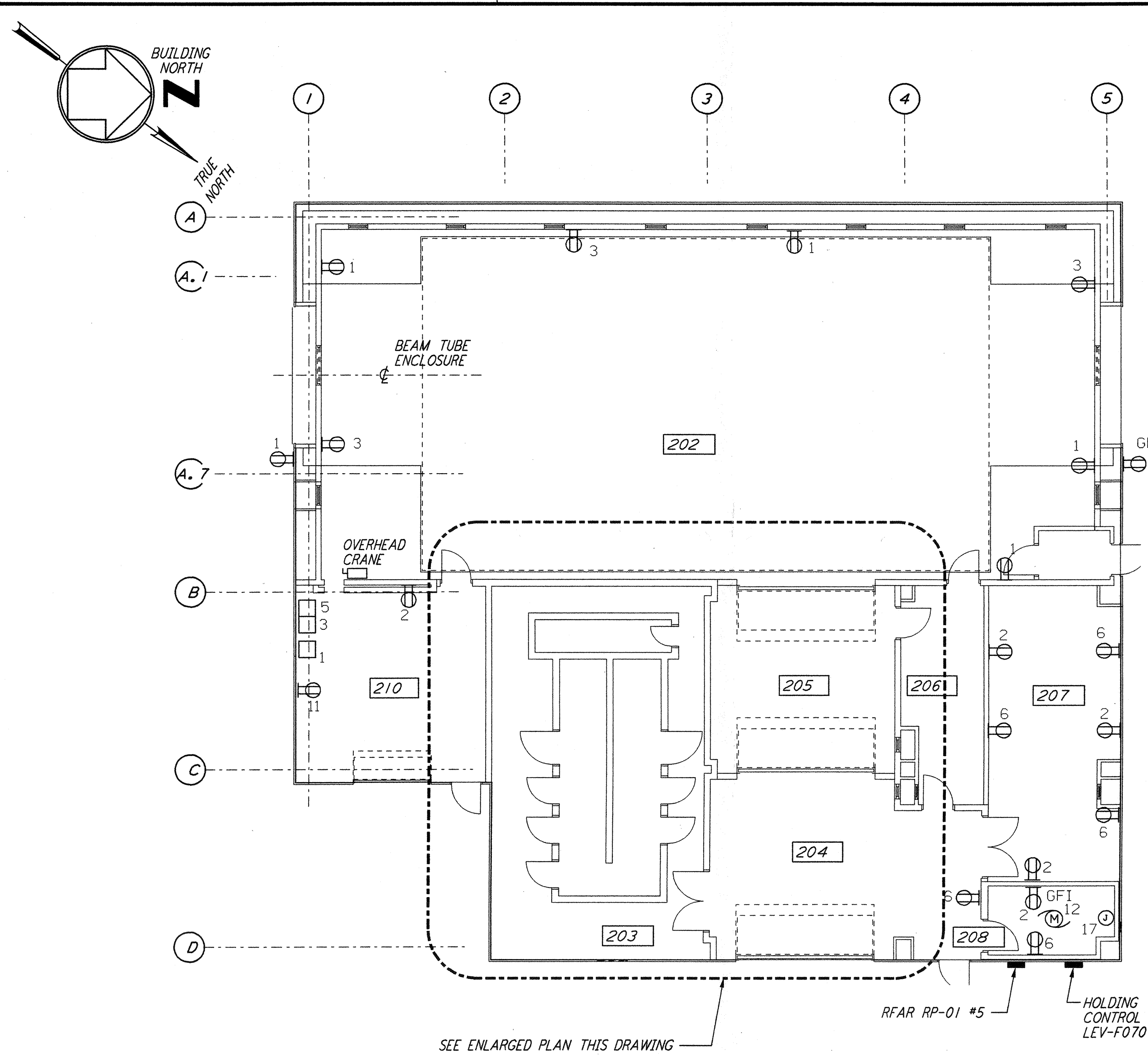
**GENERAL NOTES:**

- FOR STANDARD SYMBOLS, ABBREVIATIONS AND ACRONYMS SEE DWG. WA-E-001.
- FOR ELECTRICAL SYMBOLS SEE DWG. WA-E-002.
- FOR STANDARD INSTALLATION DETAILS SEE DWG. WA-E-404 AND WA-E-405.
- FOR CABLE TYPE DESCRIPTION SEE DWG. WA-E-007.
- ALL RUNS ARE SHOWN DIAGRAMMATICALLY ONLY. CONTRACTOR SHALL COORDINATE INSTALLATION WITH OTHER DISCIPLINES.
- FOR SINGLE LINE DIAGRAM, SEE DWG. WA-E-008.
- FOR EQUIPMENT LOCATION, SEE HVAC DWG. WA-H-211.
- ALL CIRCUITS SHOWN ON THIS DRAWING ARE FROM PANEL RP01 UNLESS OTHERWISE NOTED.
- CIRCUIT SHOWN FEEDING THESE ITEMS ARE FROM DP-02.

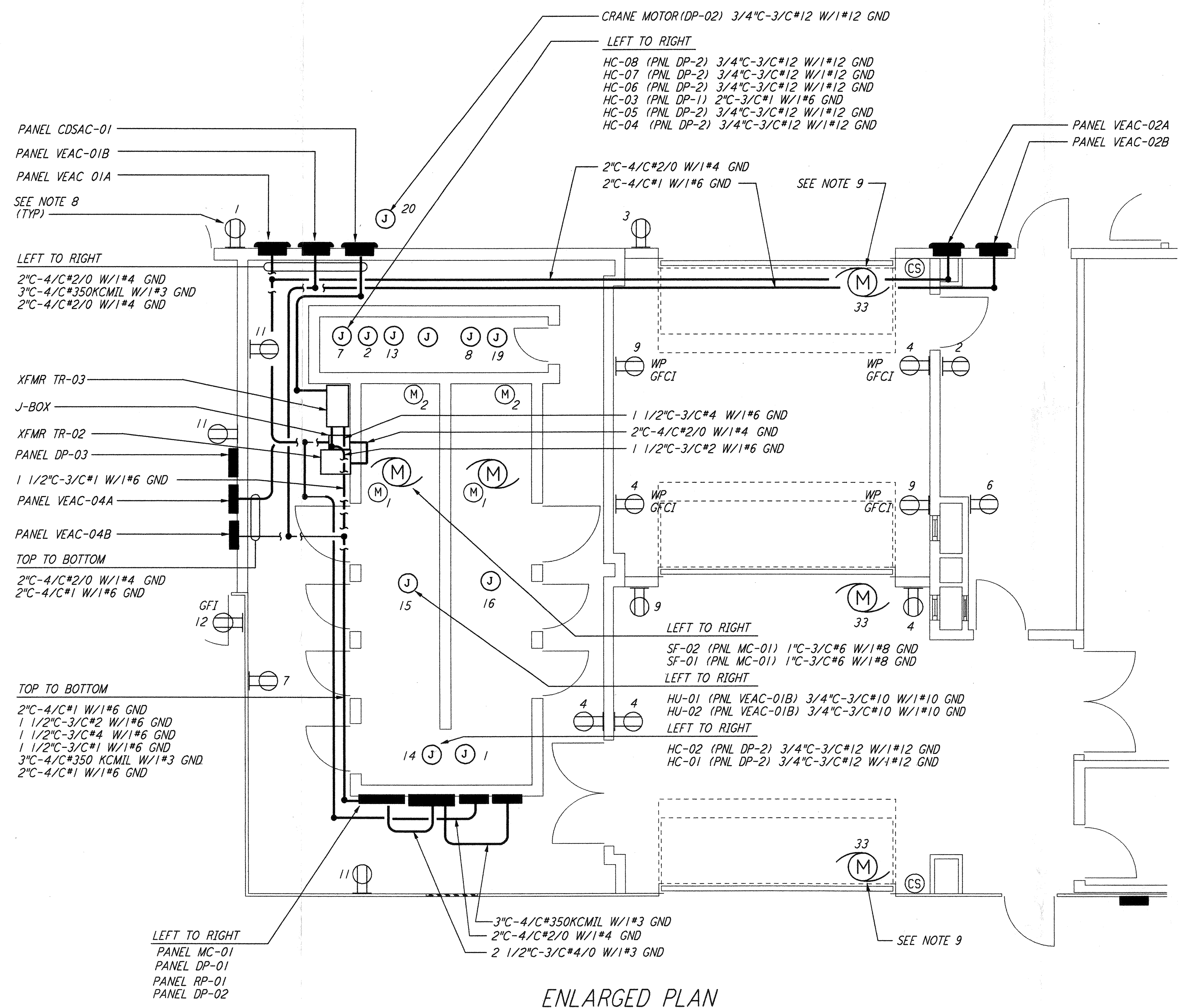
- (M)<sub>1</sub> = VANE ACTUATOR
- (M)<sub>2</sub> = SUTTER MOTOR
- (CS) = ROLL-UP DOOR CONTROL STATION

not be reproduced, copied, loaned, exhibited, or used in any other way, except by written consent from PARSONS to the borrower.

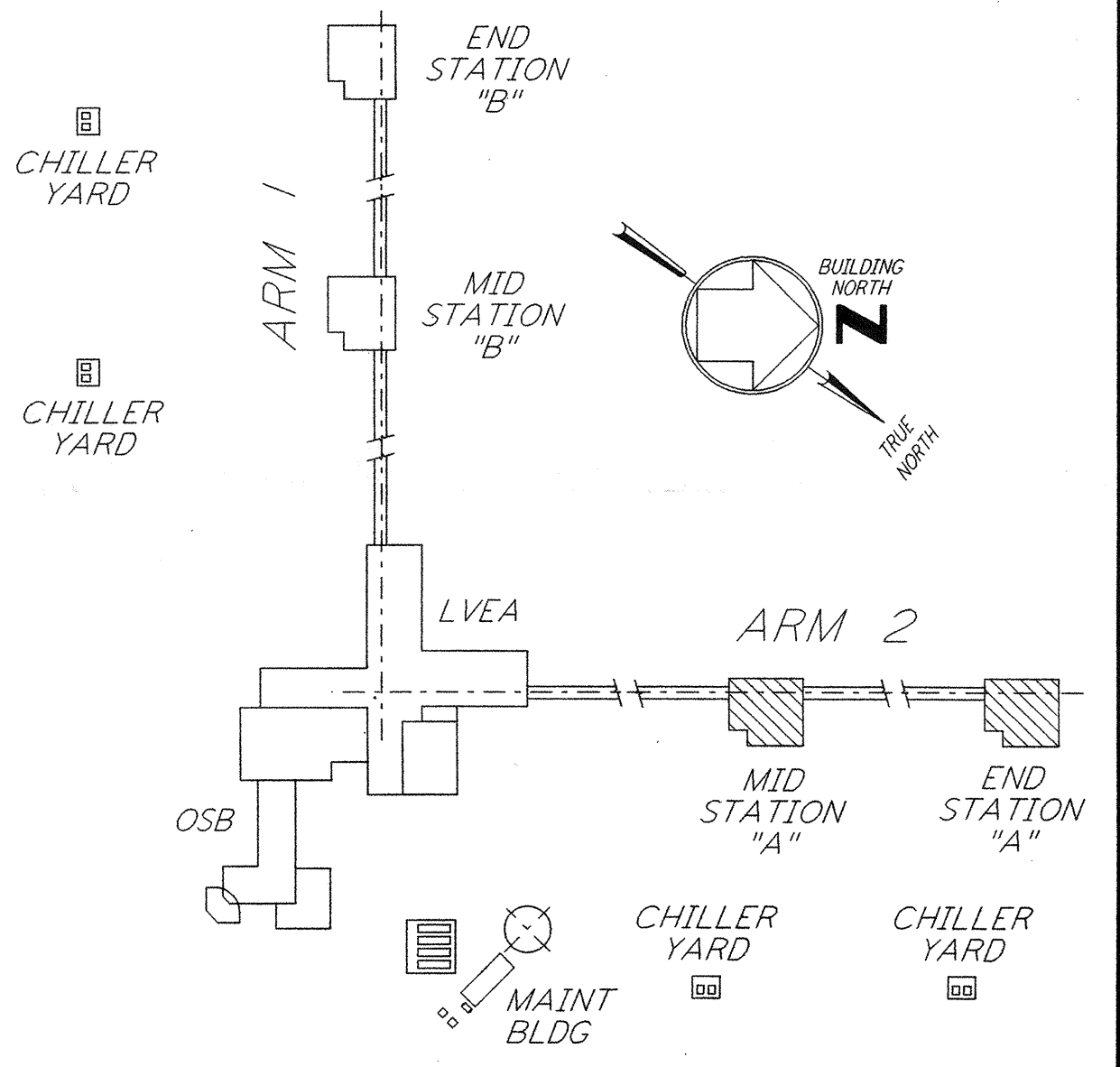
This document and the design it covers are the property of PARSONS. They are loaned only with the borrower's expressed written agreement that they will



SEE ENLARGED PLAN THIS DRAWING

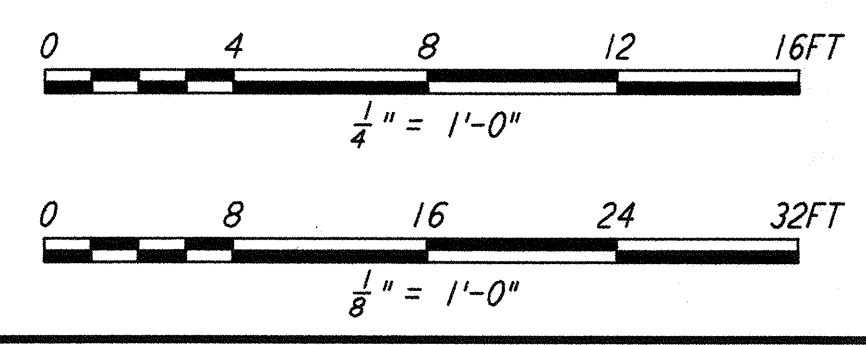


**ENLARGED PLAN**  
1/4" = 1'-0"



**KEY PLAN**

**LIGO-D960414-02-0**



NO.	DATE	BY	CHKD	ENGR	PROJ	DESCRIPTION
2	6-15-98	J. G.				ISSUED FOR AS-BUILT
1	3-21-97	J. G.	K. R.	K. R.	TDM	GENERAL REVISIONS

ISSUED FOR CONSTRUCTION  
 DRAWN M. M. 6-25-96  
 CHECKED J. K. 7-3-96  
 ENGINEER K. R. 7-3-96  
 PROJ M. D. W. 7-8-96

**AS-BUILT DRAWINGS**

**PARSONS**  
 100 WEST WALNUT STREET  
 PASADENA, CALIFORNIA

**LIGO**  
 CALIFORNIA INSTITUTE OF TECHNOLOGY  
 MASSACHUSETTS INSTITUTE OF TECHNOLOGY

LASER INTERFEROMETER  
 GRAVITATIONAL-WAVE OBSERVATORY  
 SITE NO. 1 - HANFORD, WASHINGTON

**ELECTRICAL  
 MID & END A STATIONS  
 ABOVEGROUND POWER PLAN**

SCALE AS NOTED  
 CONTRACT NUMBER PP150969  
 PROJECT NUMBER 8094  
 SHEET NUMBER **WA-E-204**