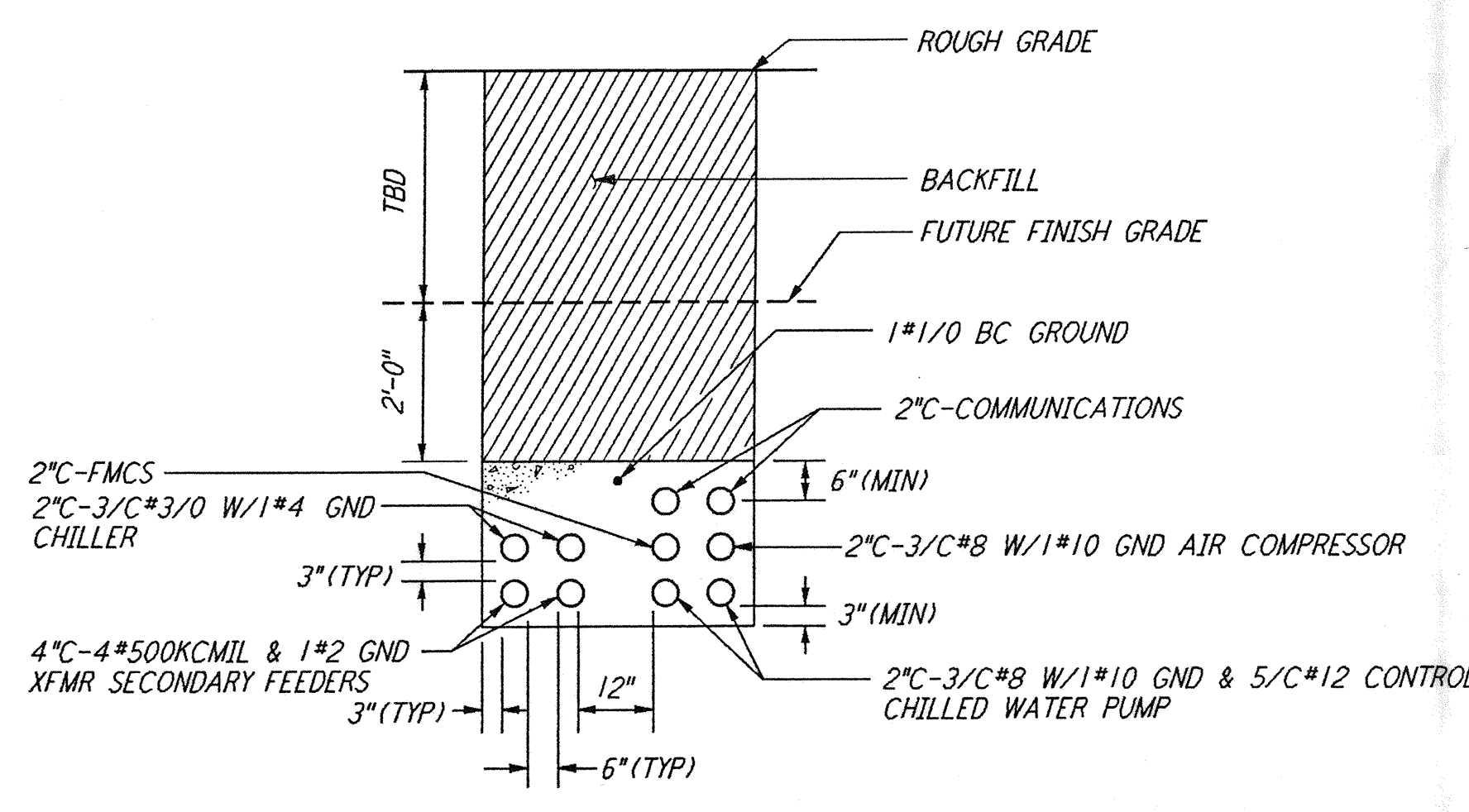
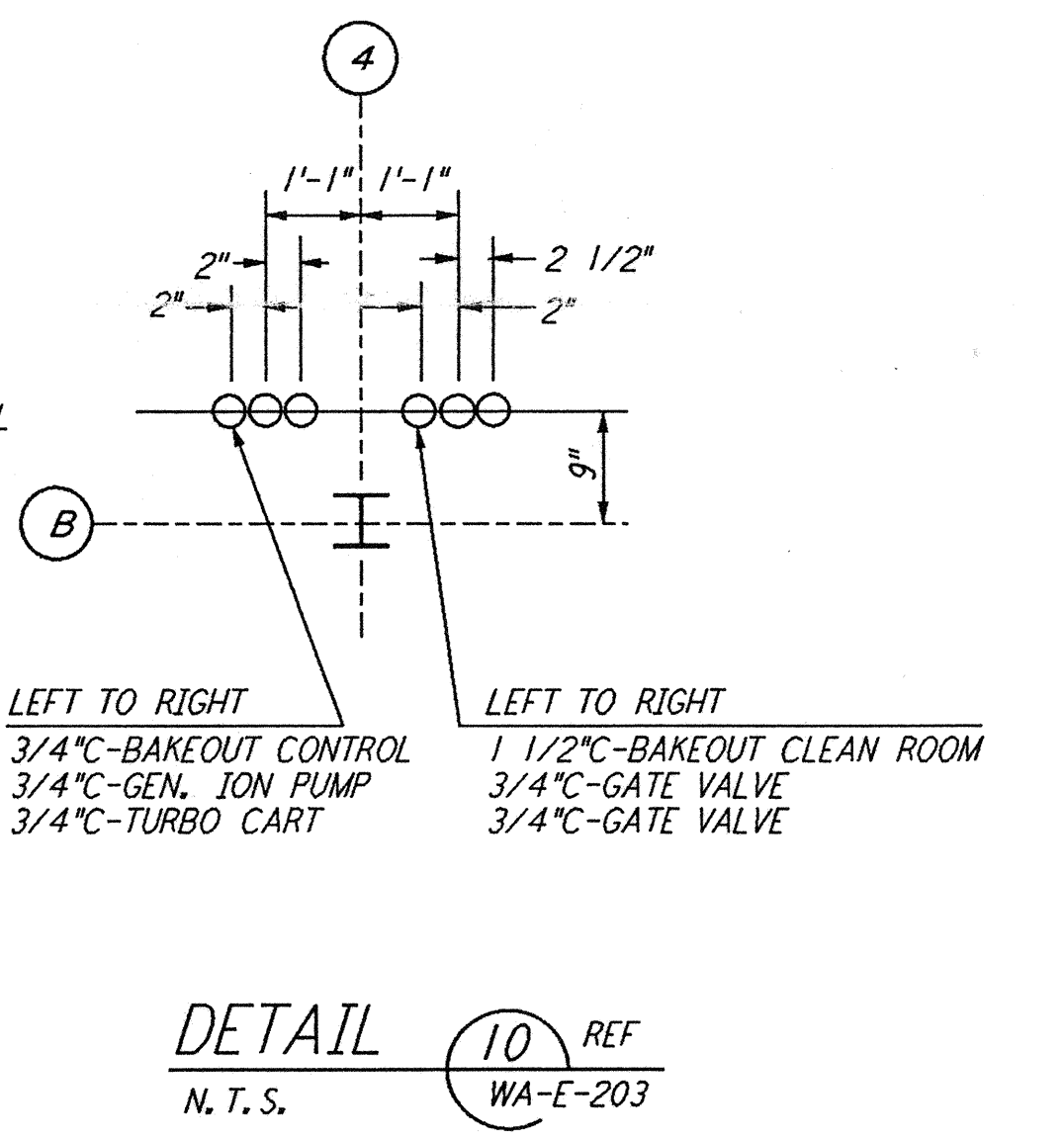
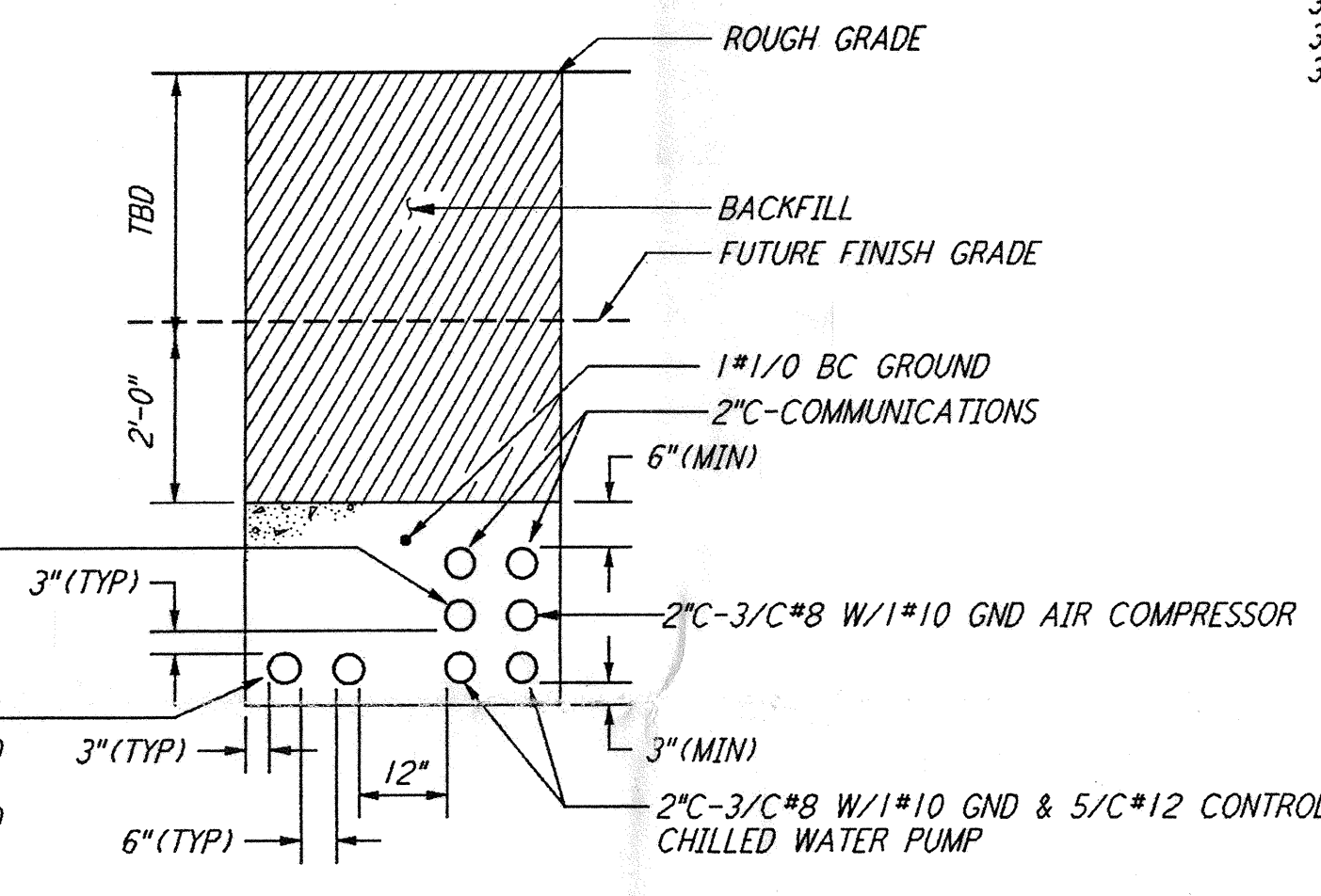
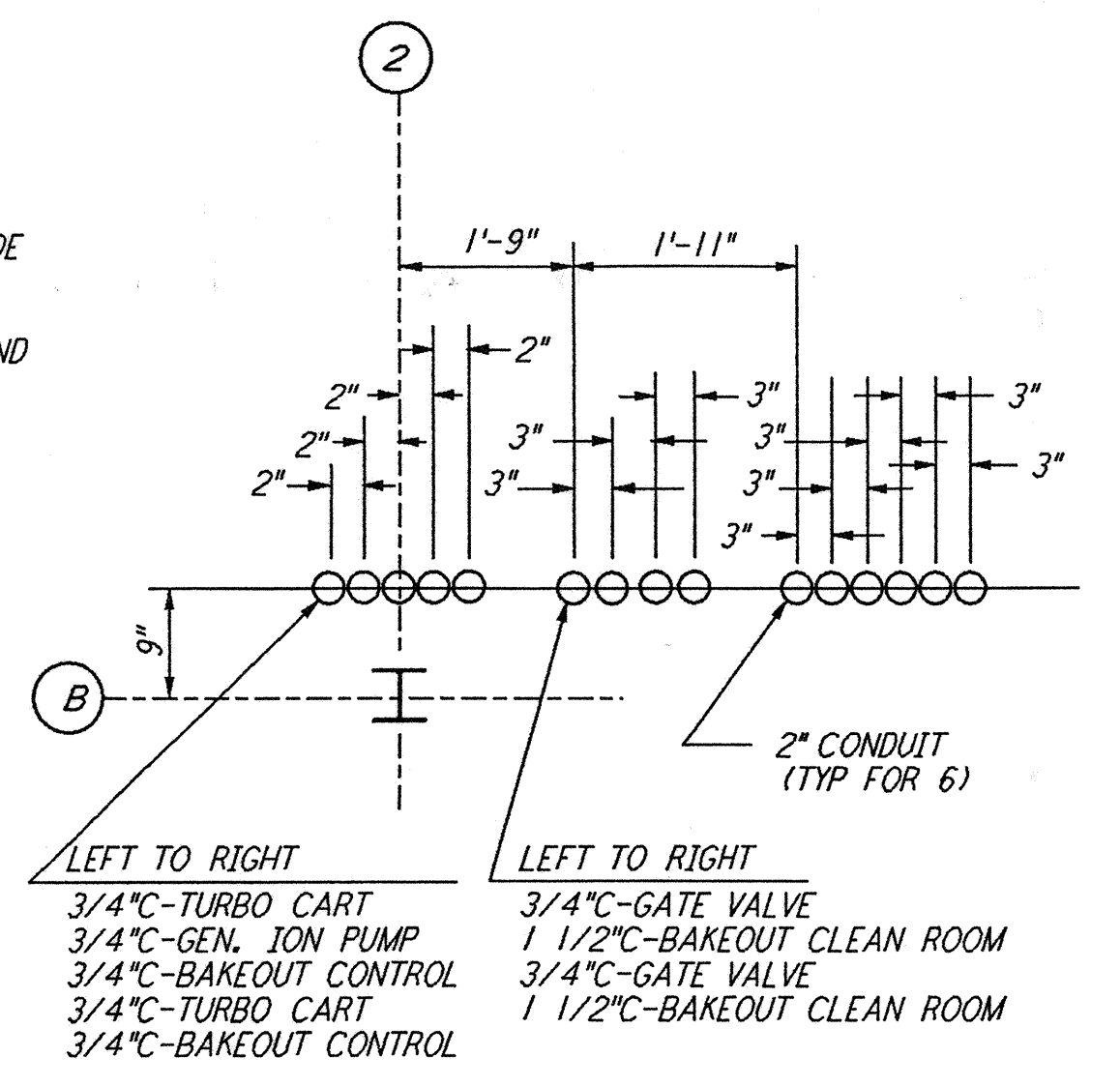
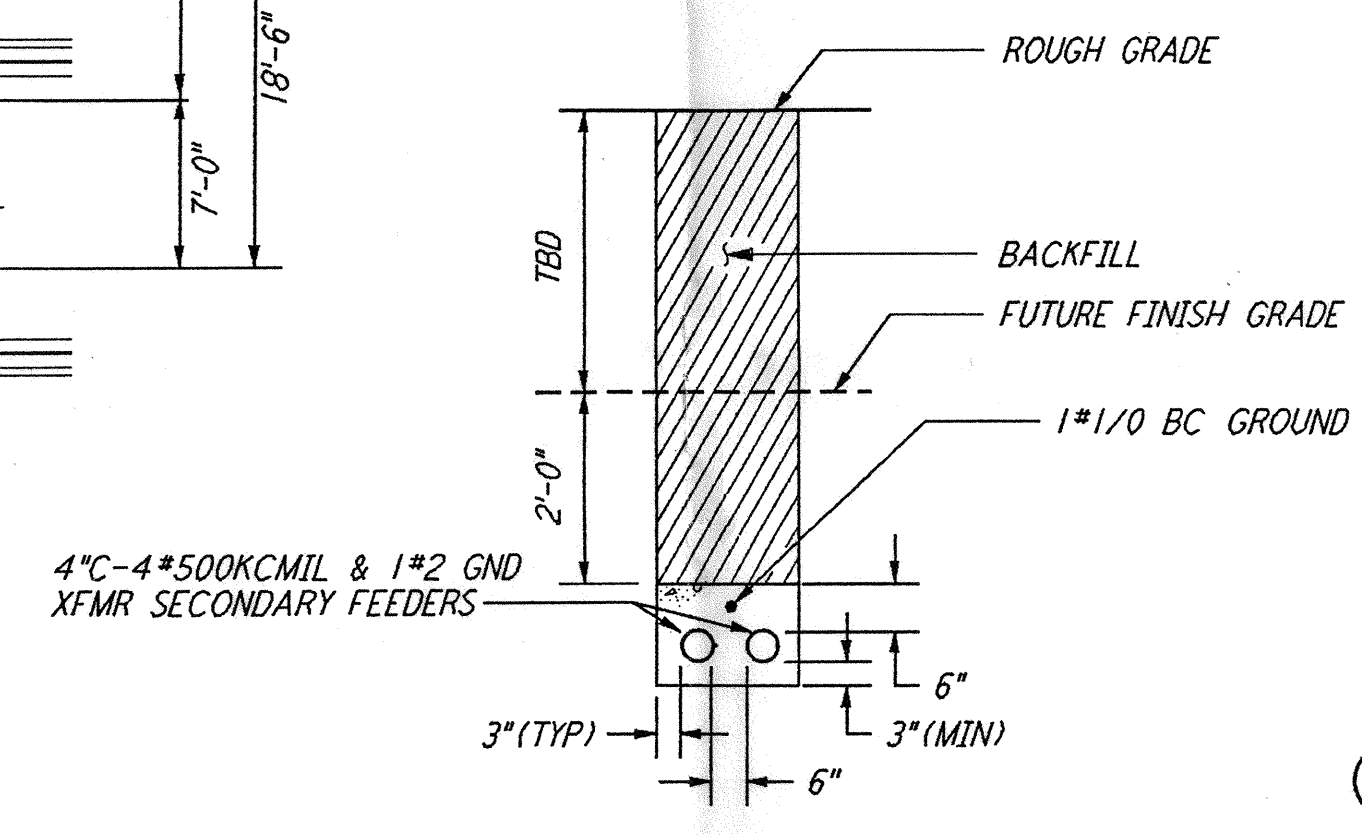
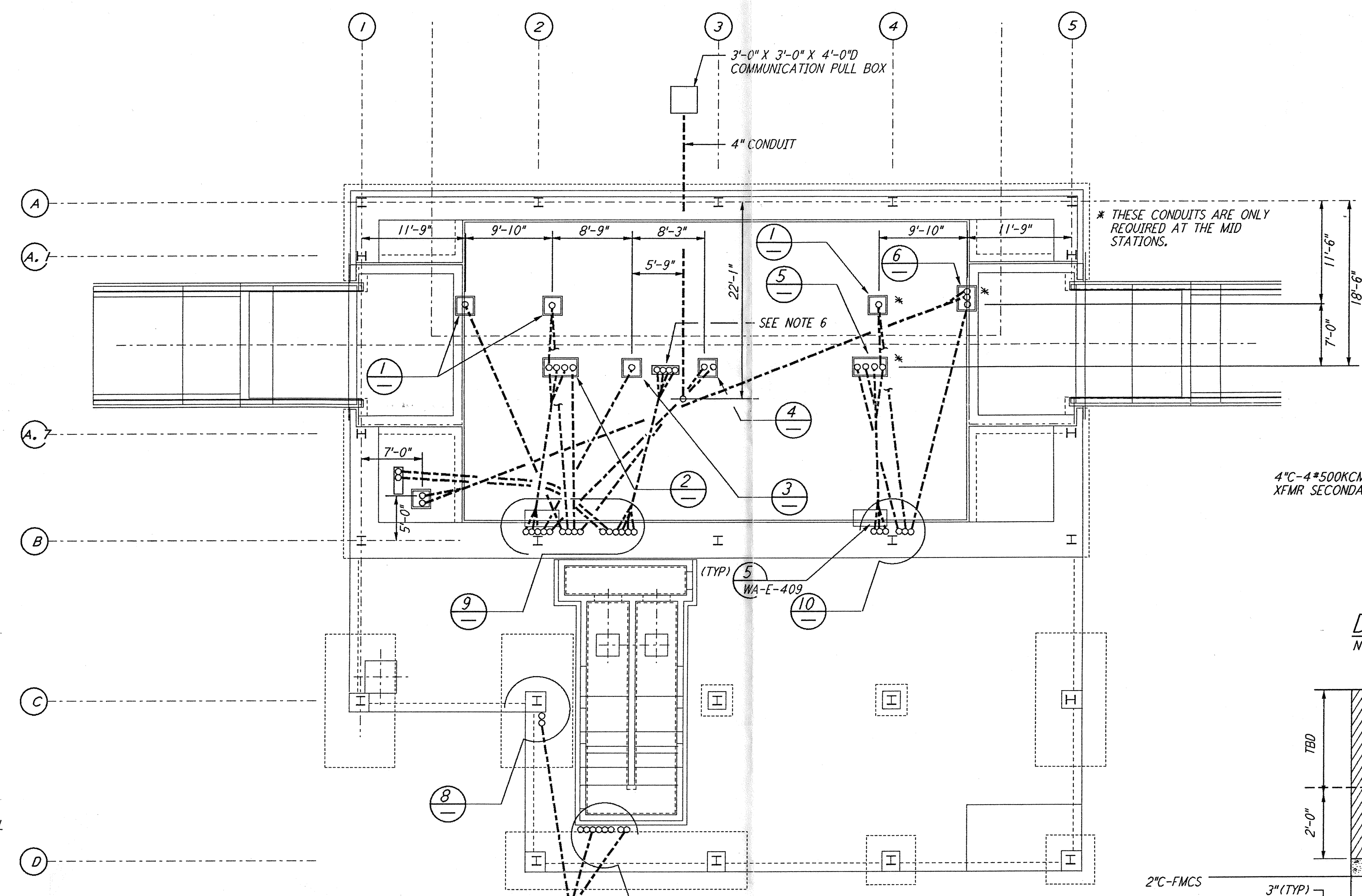
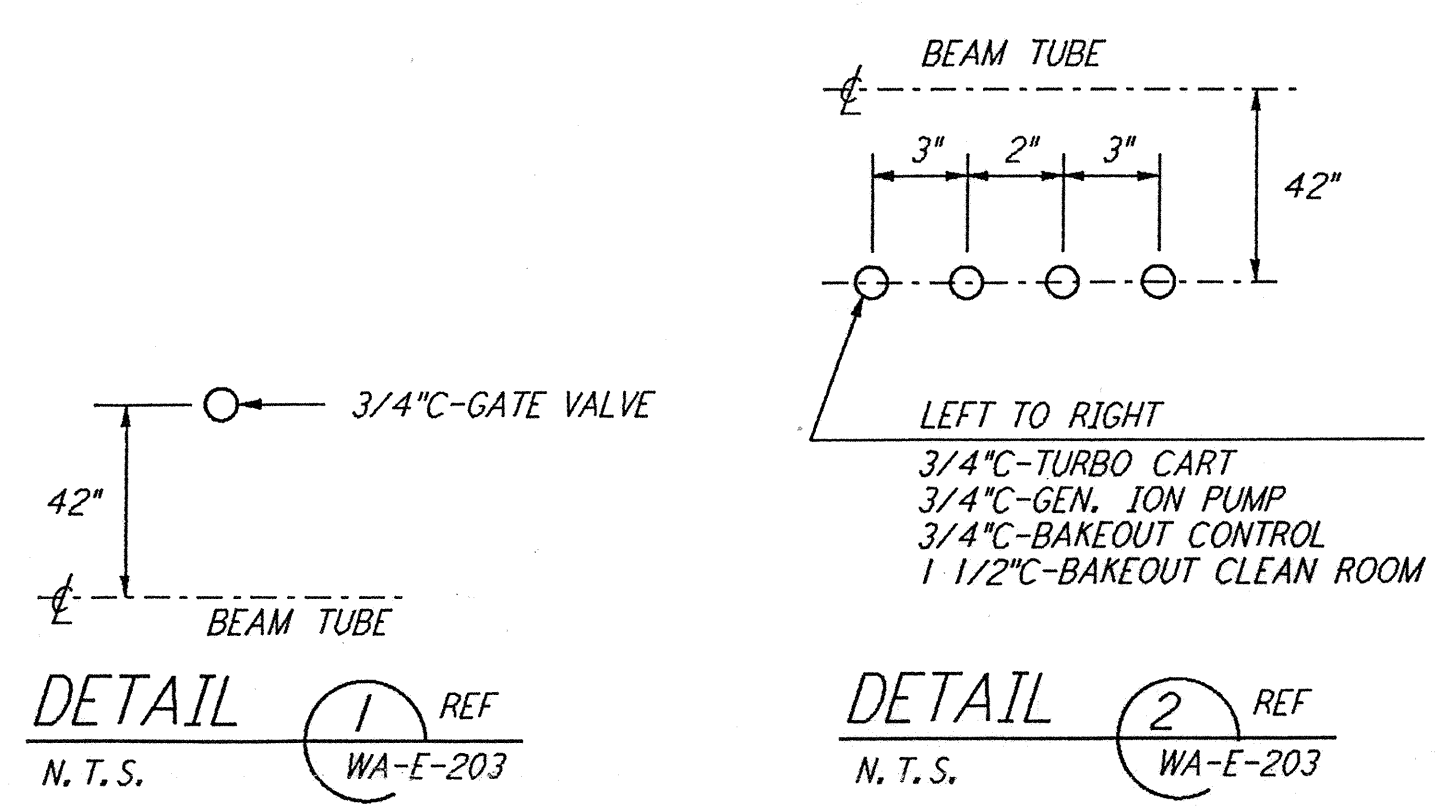
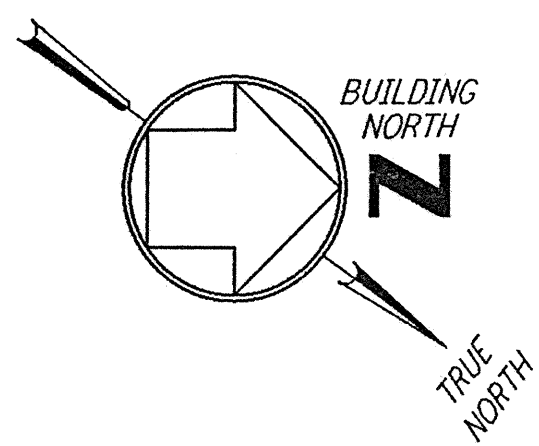


GENERAL NOTES:

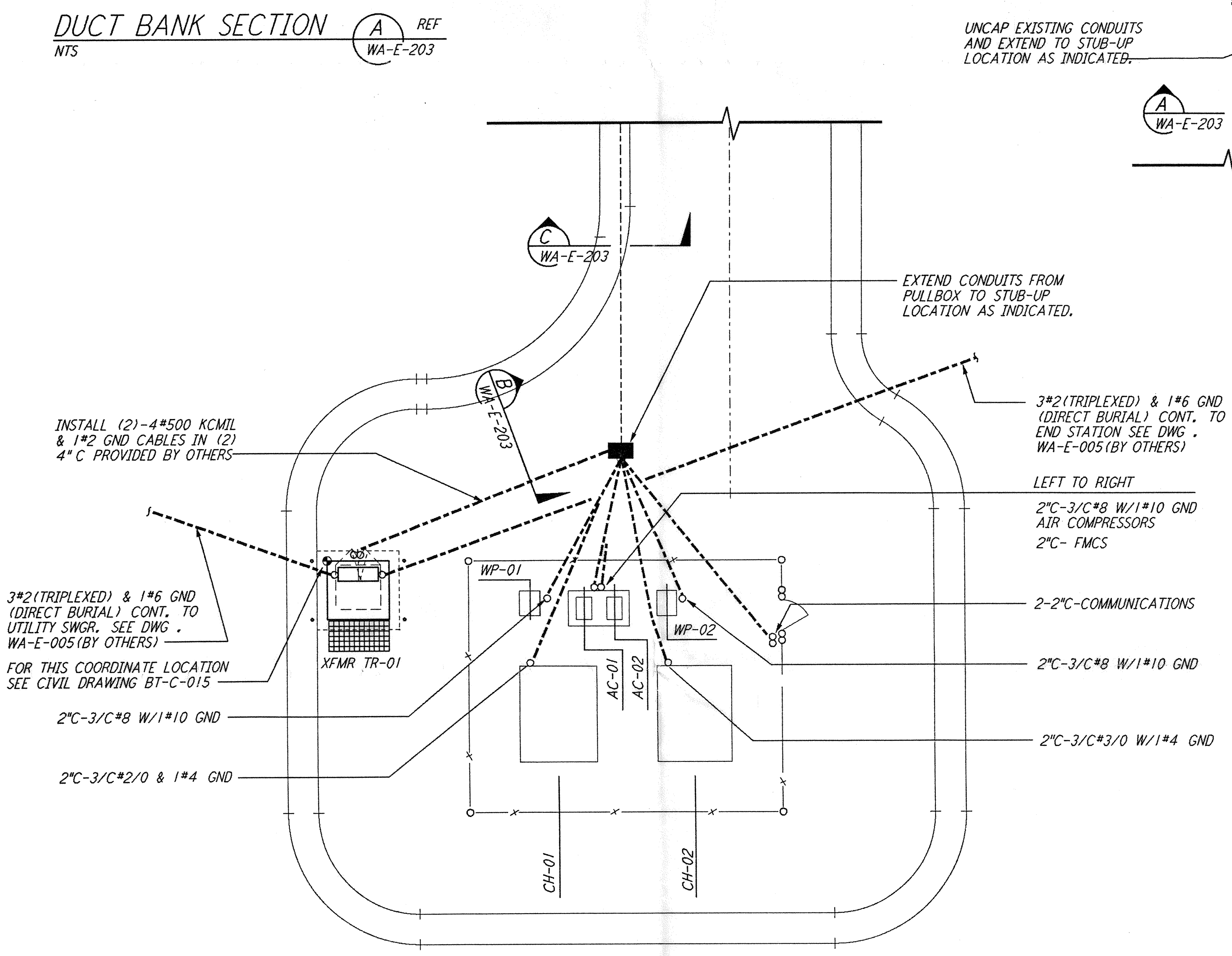
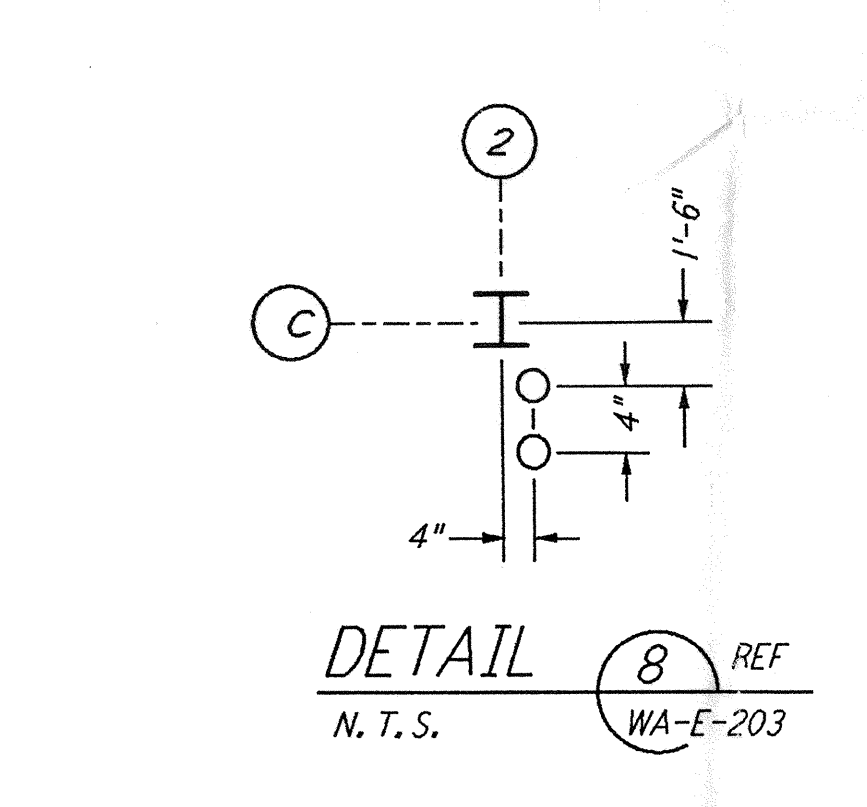
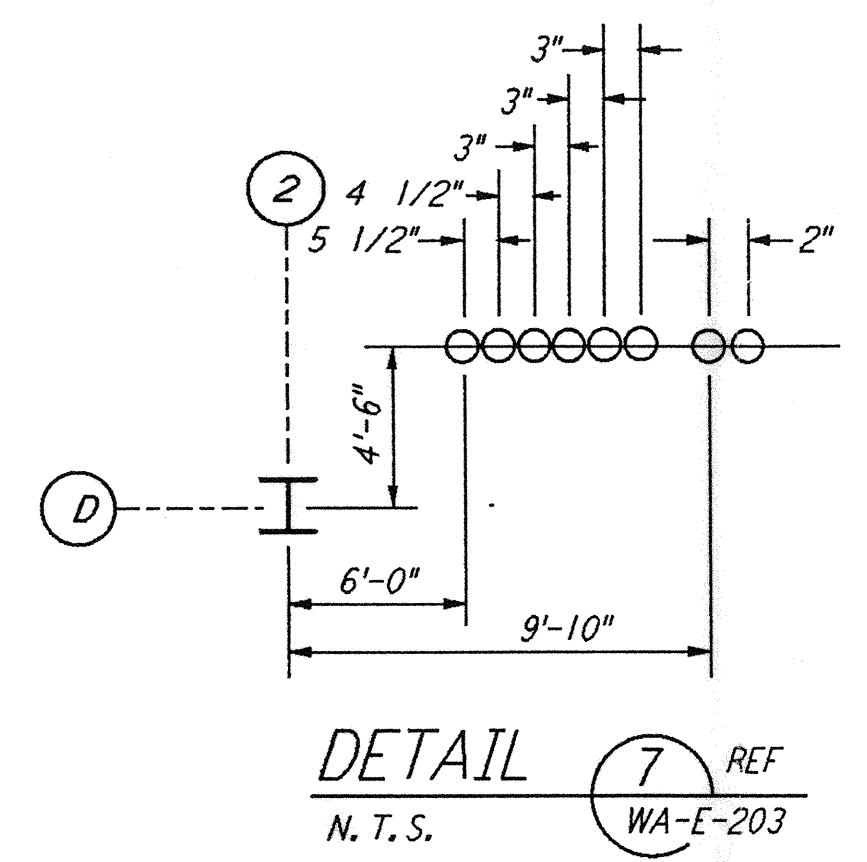
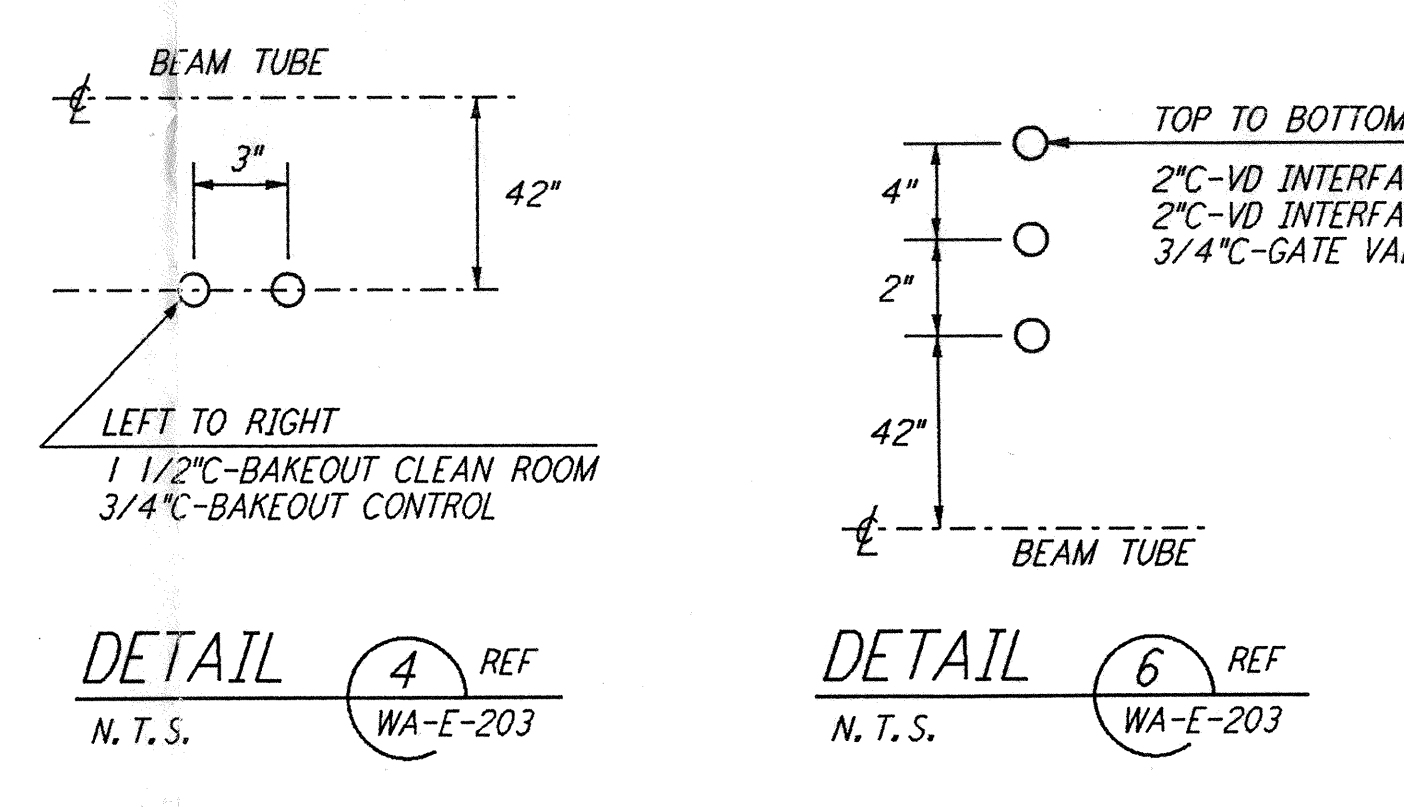
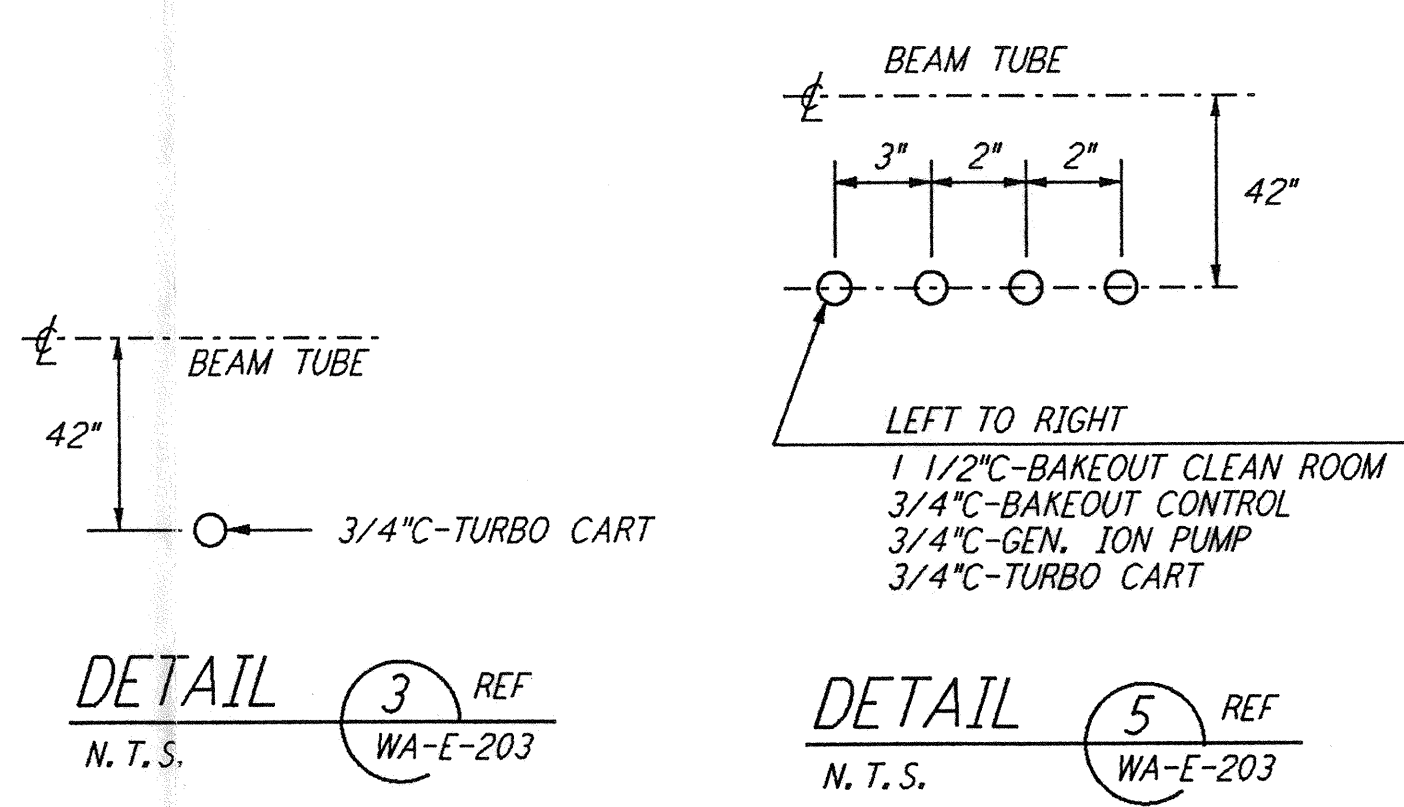
- FOR STANDARD SYMBOLS, ABBREVIATIONS AND ACRONYMS SEE DWG. WA-E-001.
- FOR ELECTRICAL SYMBOLS SEE DWG. WA-E-002.
- FOR STANDARD INSTALLATION DETAILS SEE DWG. WA-E-405 THRU WA-E-407.
- FOR CABLE TYPE DESCRIPTION SEE DWG. WA-E-007.
- ALL RUNS ARE SHOWN DIAGRAMMATICALLY ONLY, CONTRACTOR SHALL COORDINATE INSTALLATION WITH OTHER DISCIPLINES.
- COORDINATES OF CDS POWER CONDUIT STUB-UPS SHALL BE COORDINATED WITH THE VACUUM EQUIPMENT VENDOR.

NOTES:

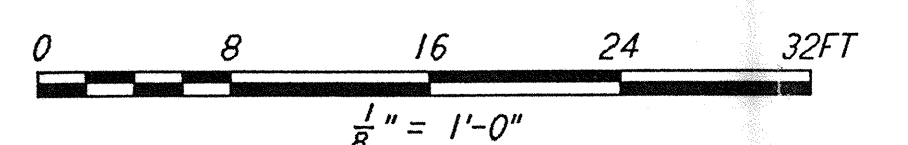
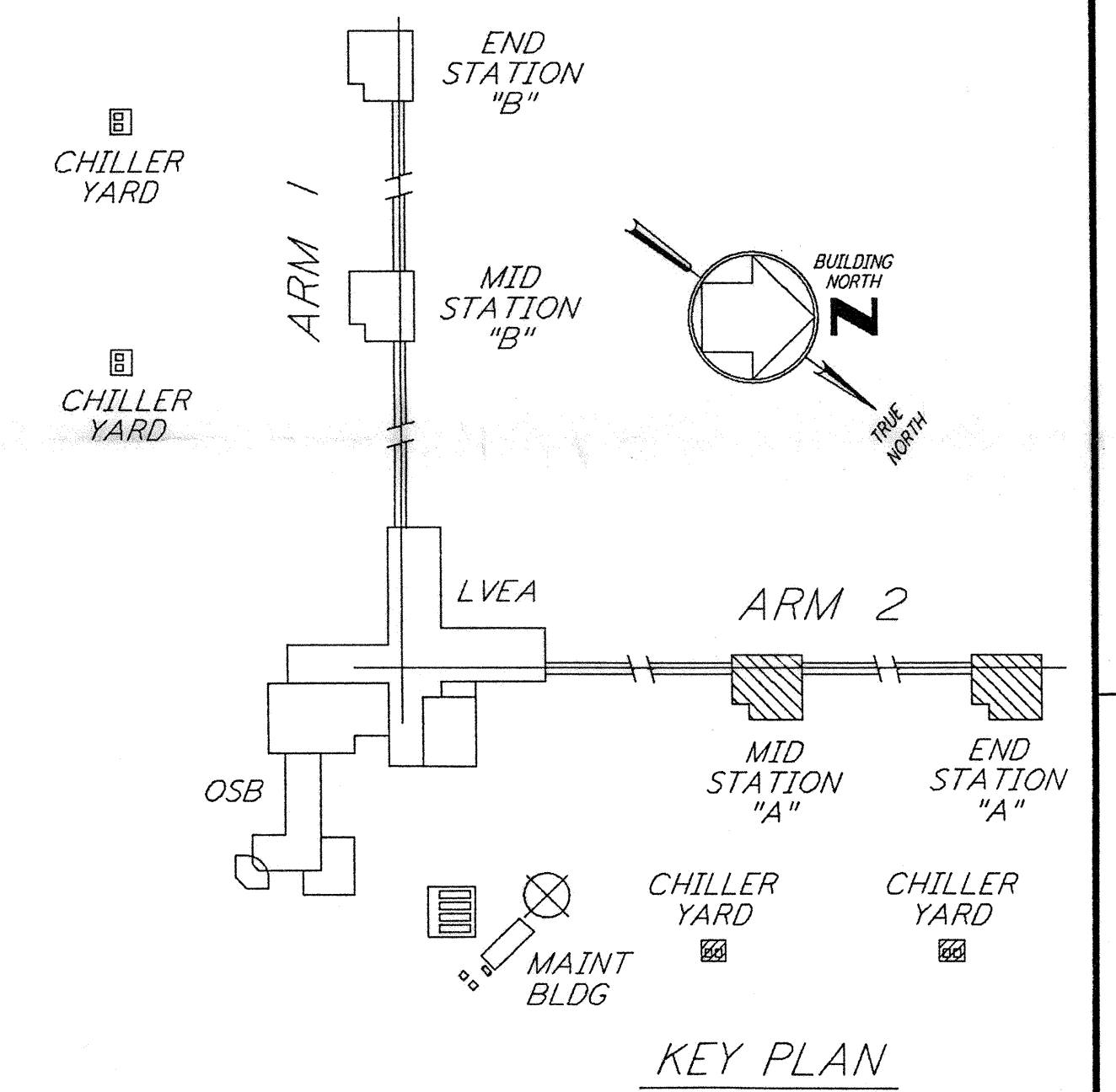
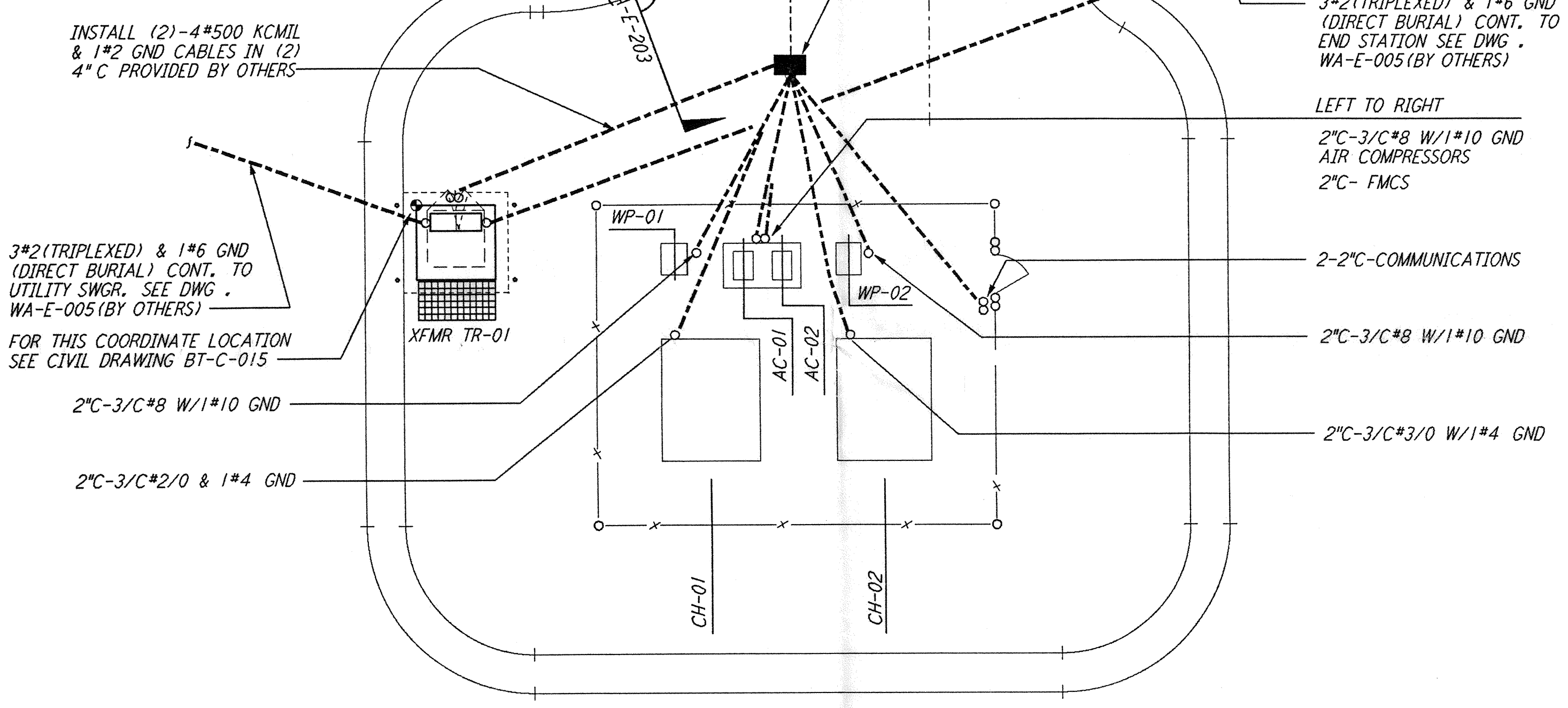
- FOR NODE NUMBERING SCHEDULE SEE DWG. WA-E-008.



UNCAP EXISTING CONDUITS AND EXTEND TO STUB-UP LOCATION AS INDICATED.



EXTEND CONDUITS FROM PULLBOX TO STUB-UP LOCATION AS INDICATED.



This document and the design it covers are the property of PARSONS. They are loaned only with the borrower's expressed written agreement that they will not be reproduced, copied, loaned, exhibited, or used in any other way, except by written consent from PARSONS to the borrower.

| NO. | DATE | BY | CHKD | ENGR | PROJ. | DESCRIPTION |
|-----|----------|------|------|------|-------|---------------------------|
| B | 4-19-96 | J.G. | J.C. | J.C. | J.C. | FINAL DESIGN REVIEW & BID |
| A | 10-31-95 | | | | | PRELIMINARY DESIGN REVIEW |

| | |
|----------|-------|
| DRAWN | J. G. |
| CHECKED | |
| ENGINEER | |
| PROJ | |

PARSONS
 100 WEST WALNUT STREET
 PASADENA, CALIFORNIA

LIGO
 CALIFORNIA INSTITUTE OF TECHNOLOGY
 MASSACHUSETTS INSTITUTE OF TECHNOLOGY

LASER INTERFEROMETER
 GRAVITATIONAL-WAVE OBSERVATORY
 SITE NO. 1 - HANFORD, WASHINGTON

TITLE: ELECTRICAL MID & END STATIONS UNDERGROUND PLAN
 SCALE: AS NOTED
 CONTRACT NUMBER: PP150969
 PROJECT NUMBER: 8094
 SHEET NUMBER: WA-E-203
 REVISIONS: B

LIGO-D980413-B-0
 LIGOWAF3.BDR