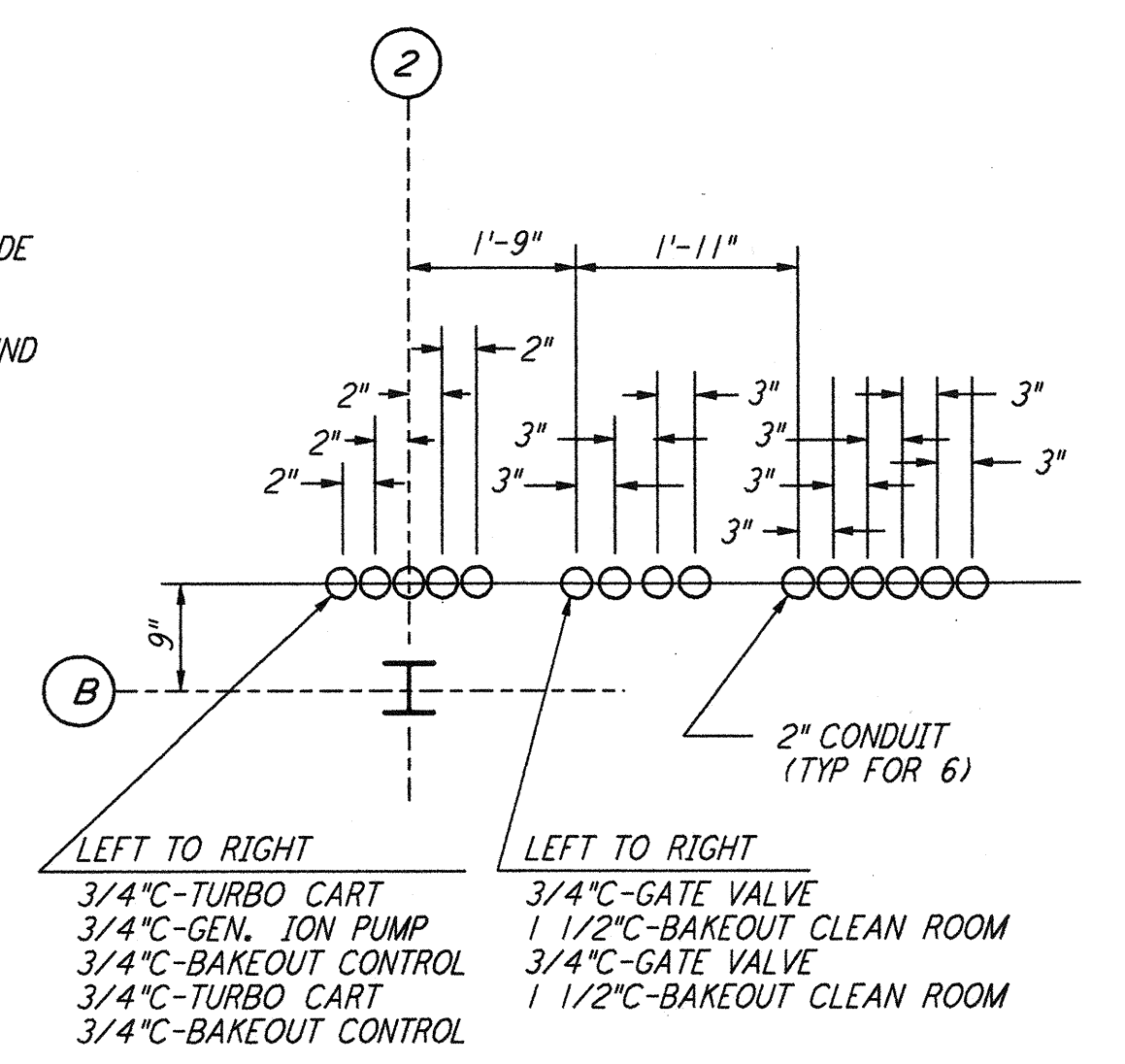
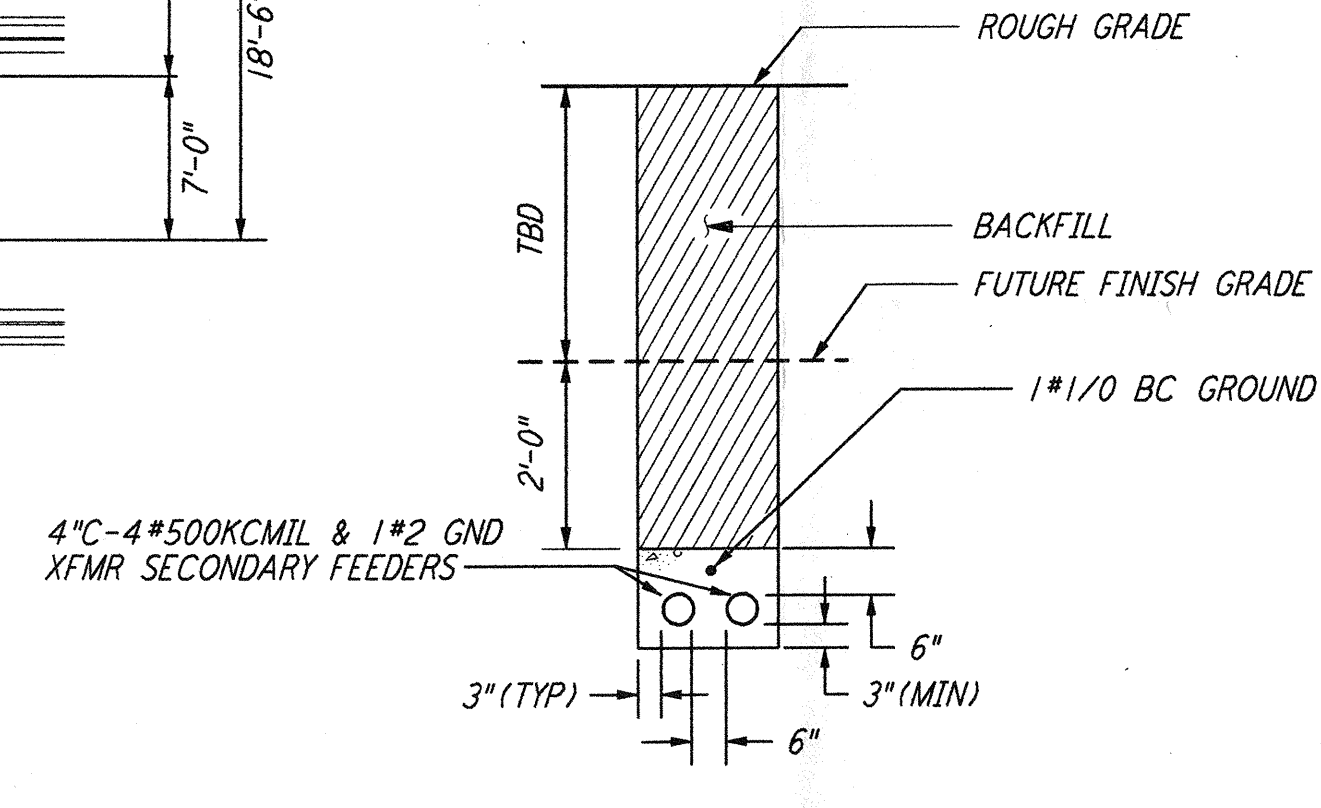
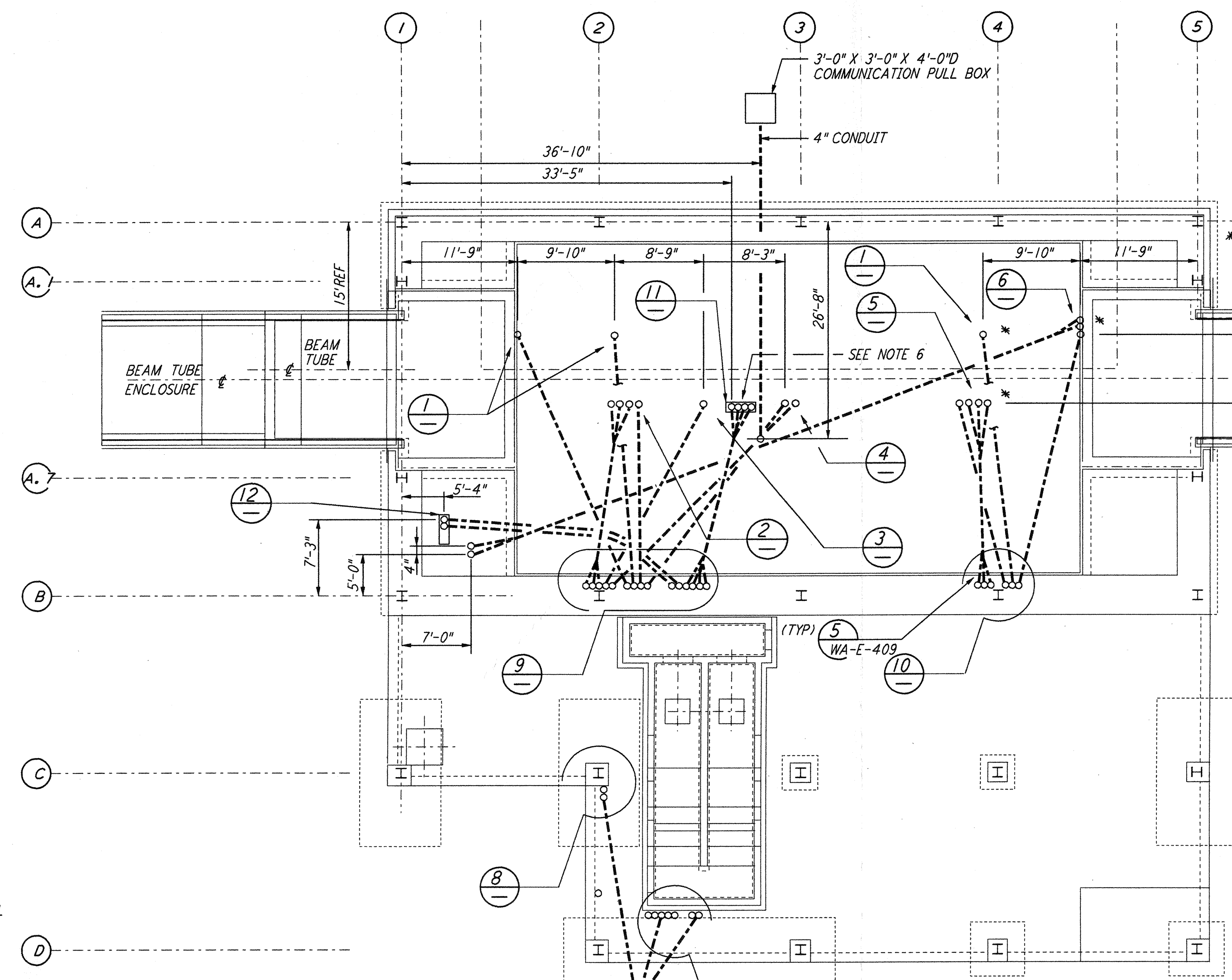
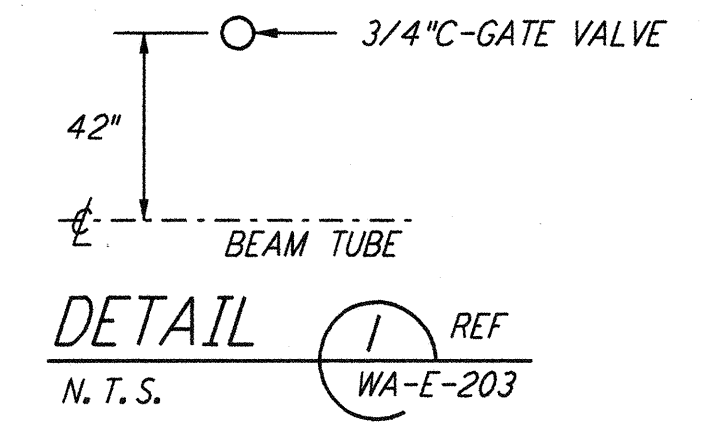
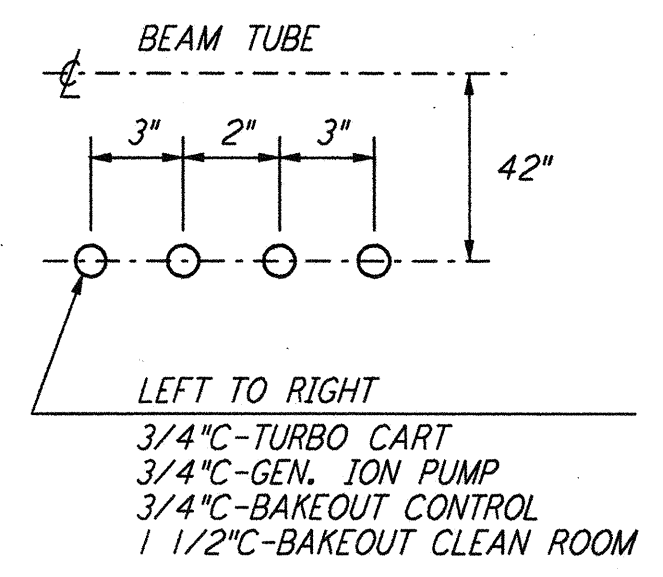
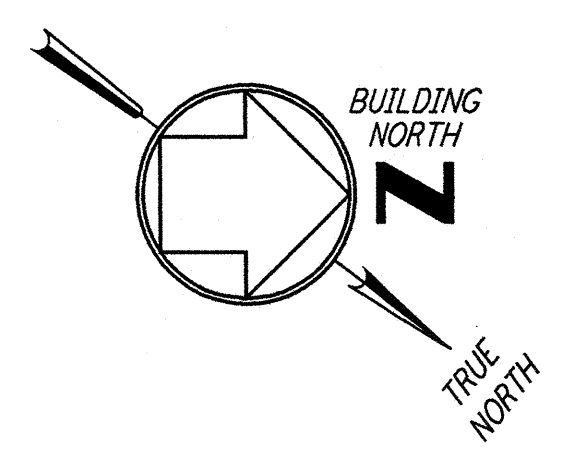


**GENERAL NOTES:**

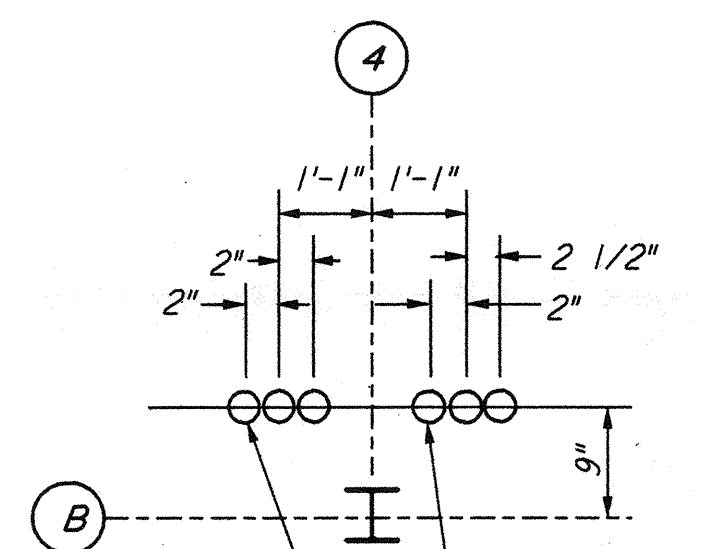
- FOR STANDARD SYMBOLS, ABBREVIATIONS AND ACRONYMS SEE DWG. WA-E-001.
- FOR ELECTRICAL SYMBOLS SEE DWG. WA-E-002.
- FOR STANDARD INSTALLATION DETAILS SEE DWG. WA-E-405 THRU WA-E-407.
- FOR CABLE TYPE DESCRIPTION SEE DWG. WA-E-007.
- ALL RUNS ARE SHOWN DIAGRAMMATICALLY ONLY. CONTRACTOR SHALL COORDINATE INSTALLATION WITH OTHER DISCIPLINES.
- COORDINATES OF CDS POWER CONDUIT STUB-UPS SHALL BE COORDINATED WITH THE VACUUM EQUIPMENT VENDOR.

**NOTES:**

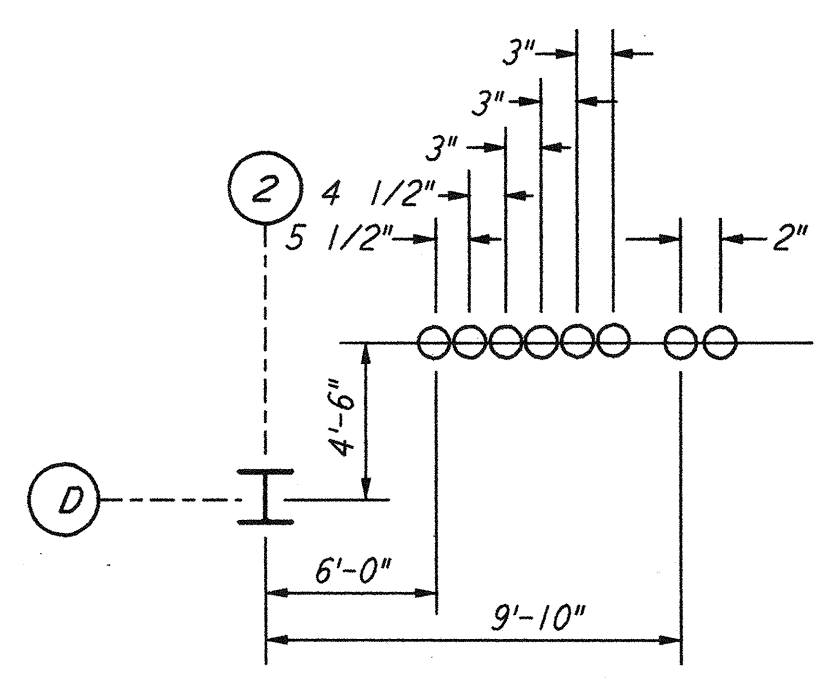
- FOR NODE NUMBERING SCHEDULE SEE DWG. WA-E-008.



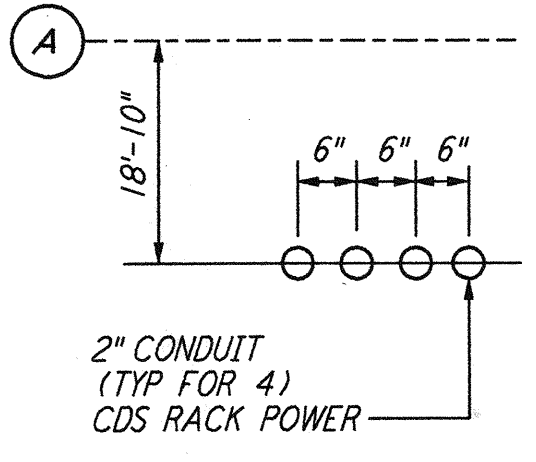
DETAIL 9 REF  
N.T.S. WA-E-203



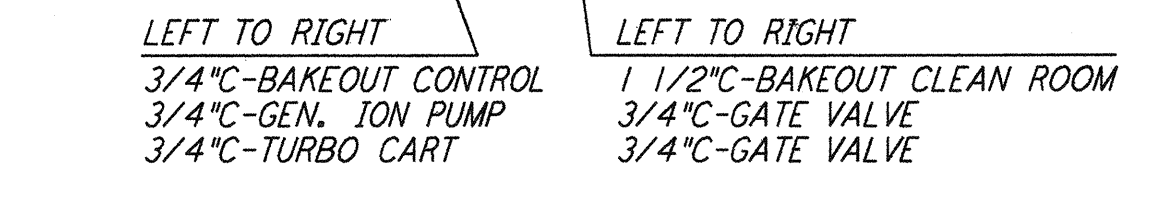
DETAIL 10 REF  
N.T.S. WA-E-203



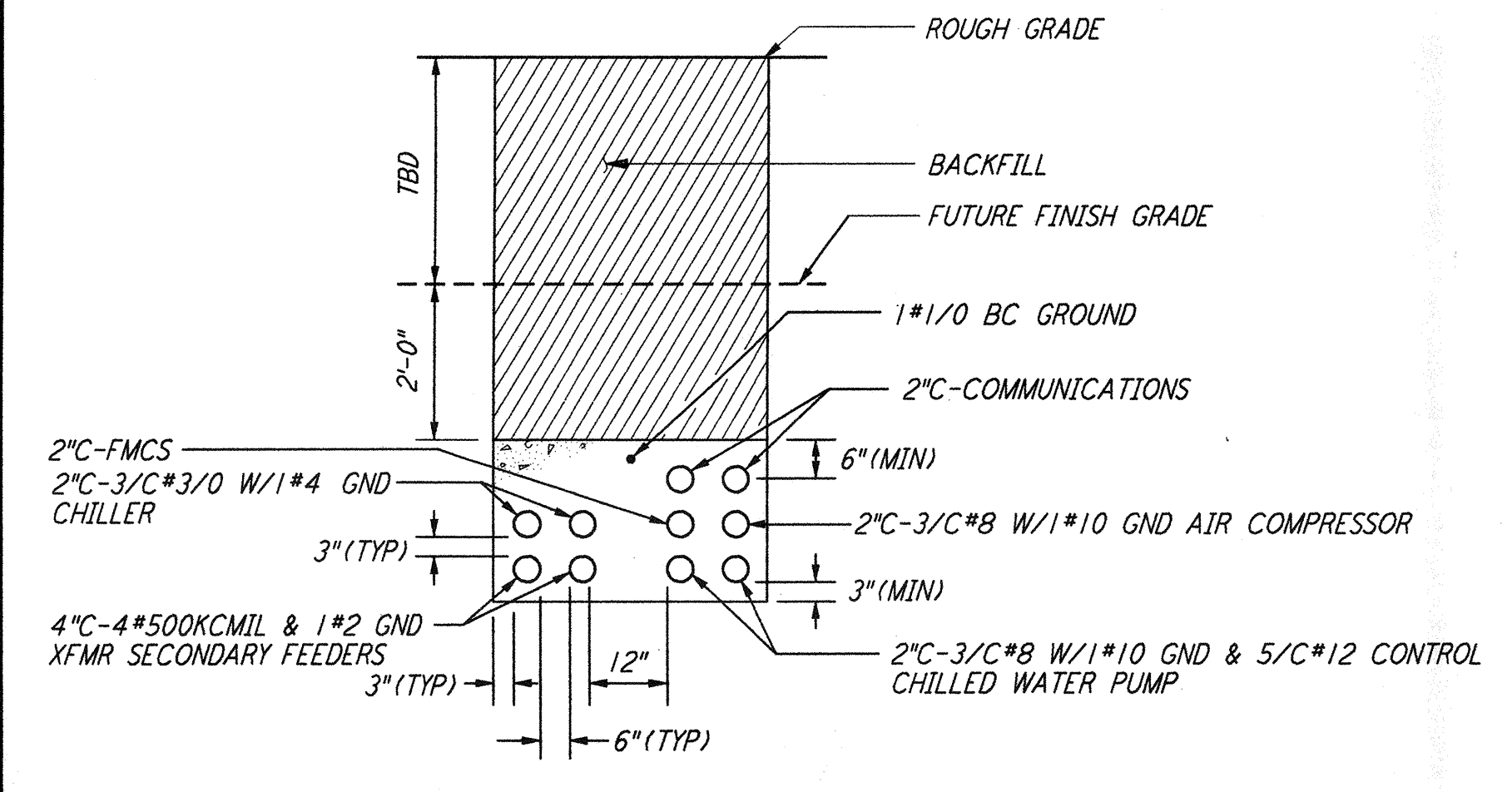
DETAIL 7 REF  
N.T.S. WA-E-203



DETAIL 11 REF  
N.T.S. WA-E-203

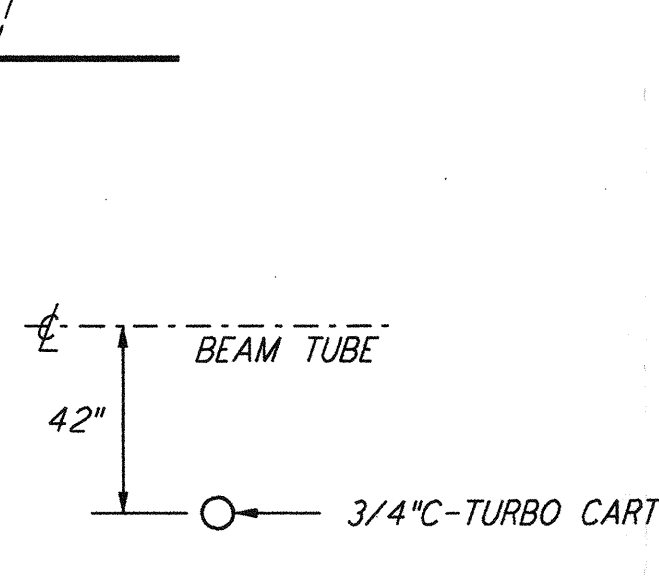


DETAIL 4 REF  
N.T.S. WA-E-203

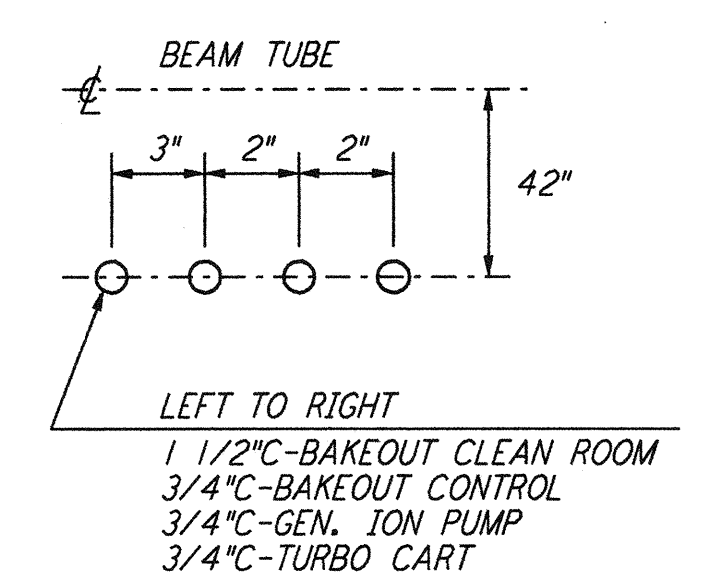


DUCT BANK SECTION (A) REF  
N.T.S. WA-E-203

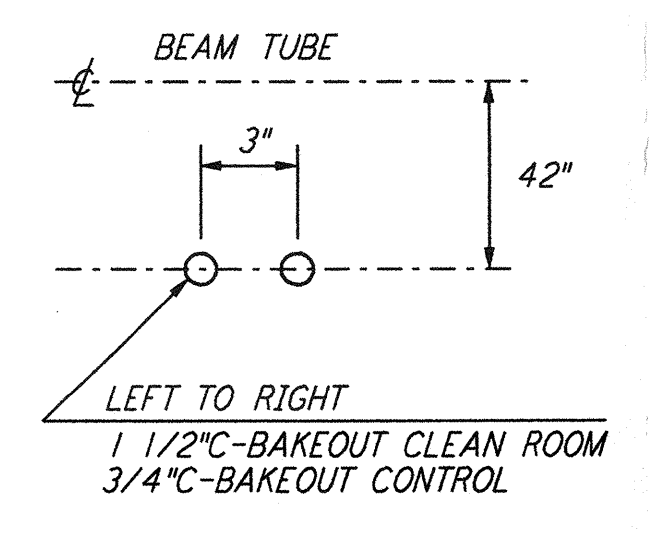
UNCAP EXISTING CONDUITS AND EXTEND TO STUB-UP LOCATION AS INDICATED.



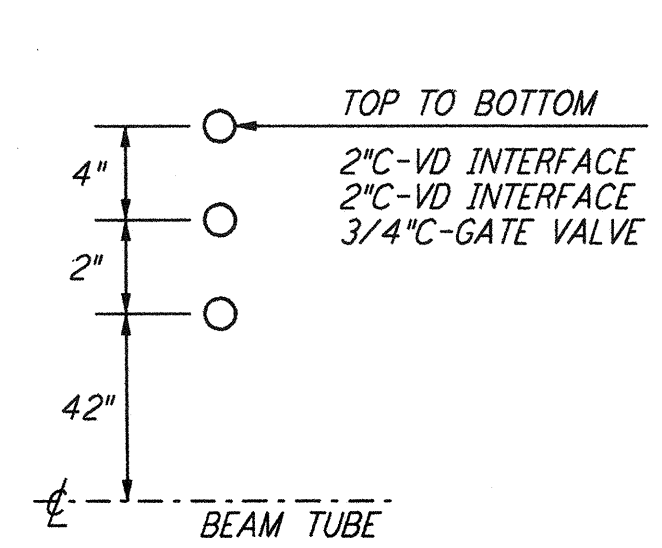
DETAIL 3 REF  
N.T.S. WA-E-203



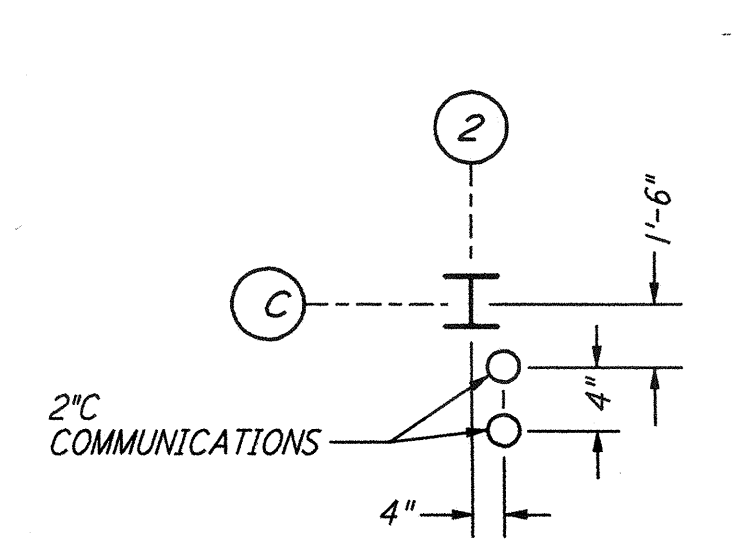
DETAIL 5 REF  
N.T.S. WA-E-203



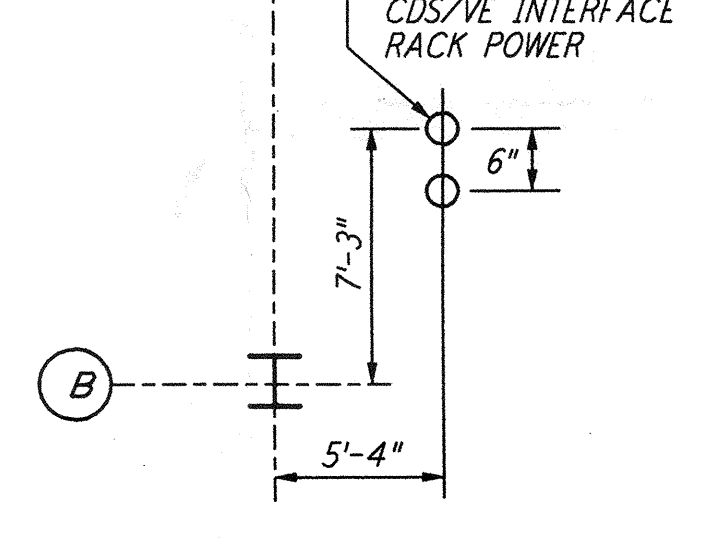
DETAIL 4 REF  
N.T.S. WA-E-203



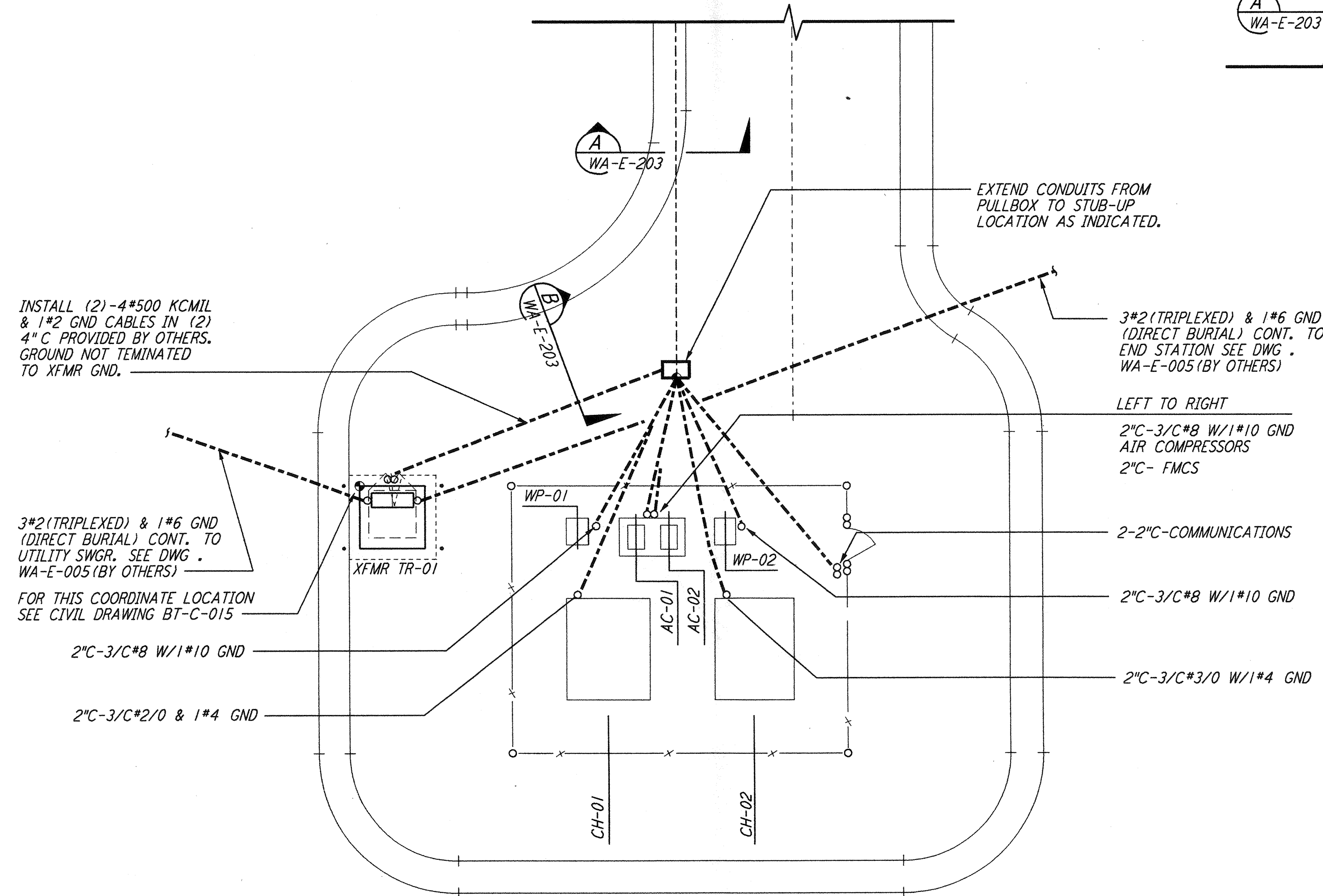
DETAIL 6 REF  
N.T.S. WA-E-203



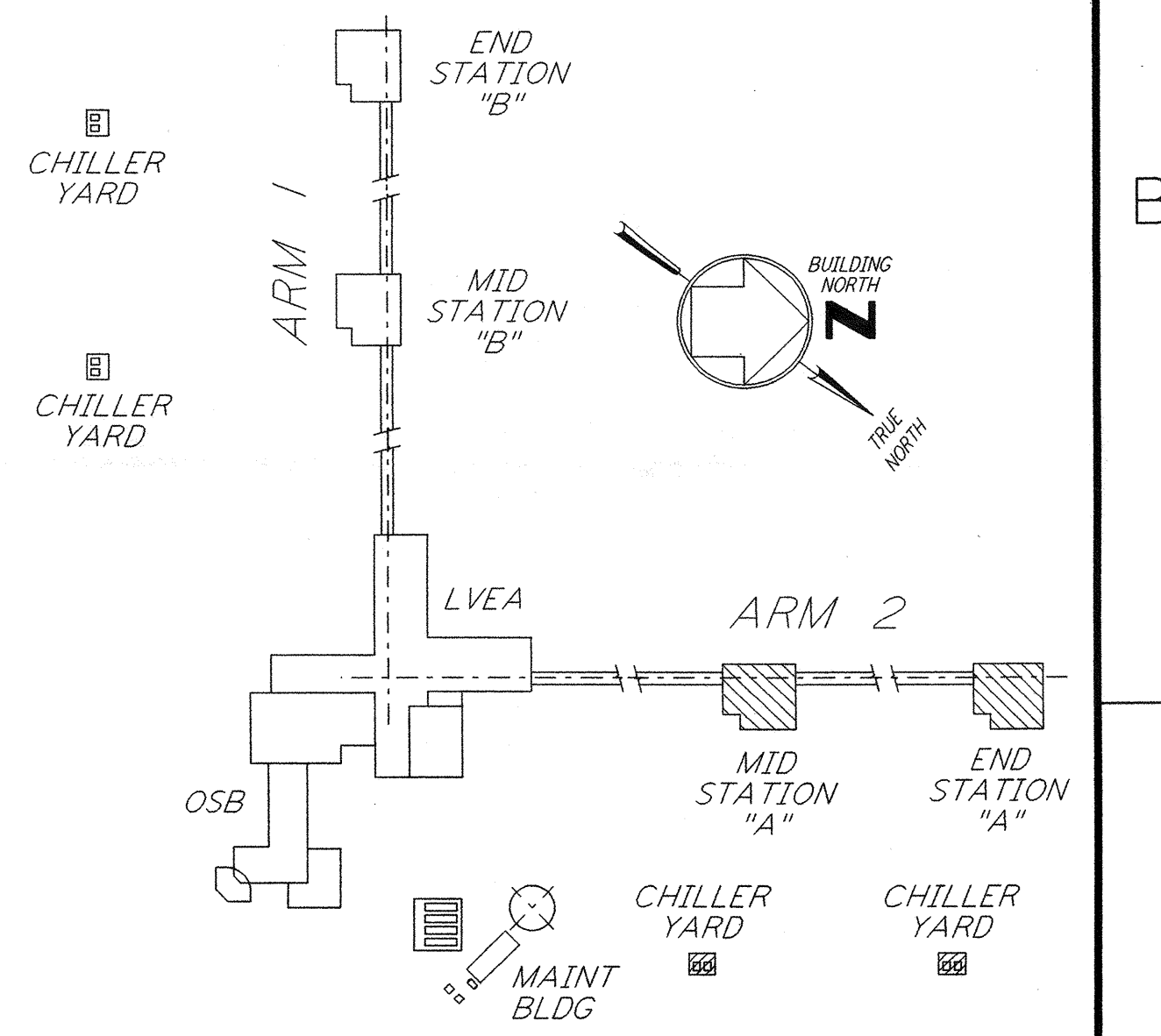
DETAIL 8 REF  
N.T.S. WA-E-203



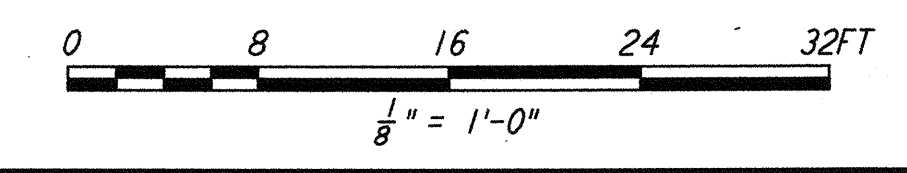
DETAIL 12 REF  
N.T.S. WA-E-203



EXTEND CONDUITS FROM PULLBOX TO STUB-UP LOCATION AS INDICATED.



KEY PLAN  
LIGO-D960413-02-0



This document and the design it covers are the property of PARSONS. They are loaned only with the borrower's expressed written agreement that they will not be reproduced, copied, loaned, exhibited, or used in any other way, except by written consent from PARSONS to the borrower.

NO.	DATE	BY	CHKD	ENGR	PROJ	DESCRIPTION
2	6-15-98	J. G.				ISSUED FOR AS-BUILT
1	3-21-97	J. G.	K. R.	K. R.	TDM	ISSUED FOR AS-BUILT GENERAL REVISIONS

ISSUED FOR CONSTRUCTION			
DRAWN	M. M.	6-25-96	
CHECKED	J. K.	7-3-96	
ENGINEER	K. R.	7-3-96	
PROJ	M. D. W.	7-8-96	

**AS-BUILT DRAWINGS**

100 WEST WALNUT STREET  
PASADENA, CALIFORNIA

CALIFORNIA INSTITUTE OF TECHNOLOGY  
MASSACHUSETTS INSTITUTE OF TECHNOLOGY

LASER INTERFEROMETER  
GRAVITATIONAL-WAVE OBSERVATORY  
SITE NO. 1 - HANFORD, WASHINGTON

TITLE	SCALE	CONTRACT NUMBER	PROJECT NUMBER
ELECTRICAL MID & END STATIONS UNDERGROUND PLAN	AS NOTED	PP150969	8094
SHEET NUMBER	REVISIONS		
WA-E-203			