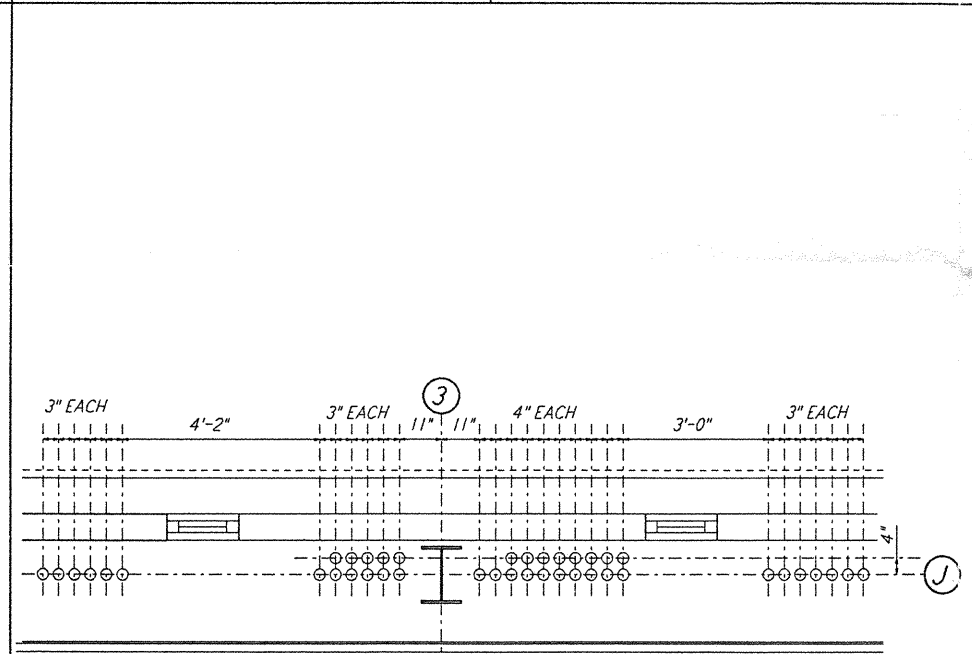
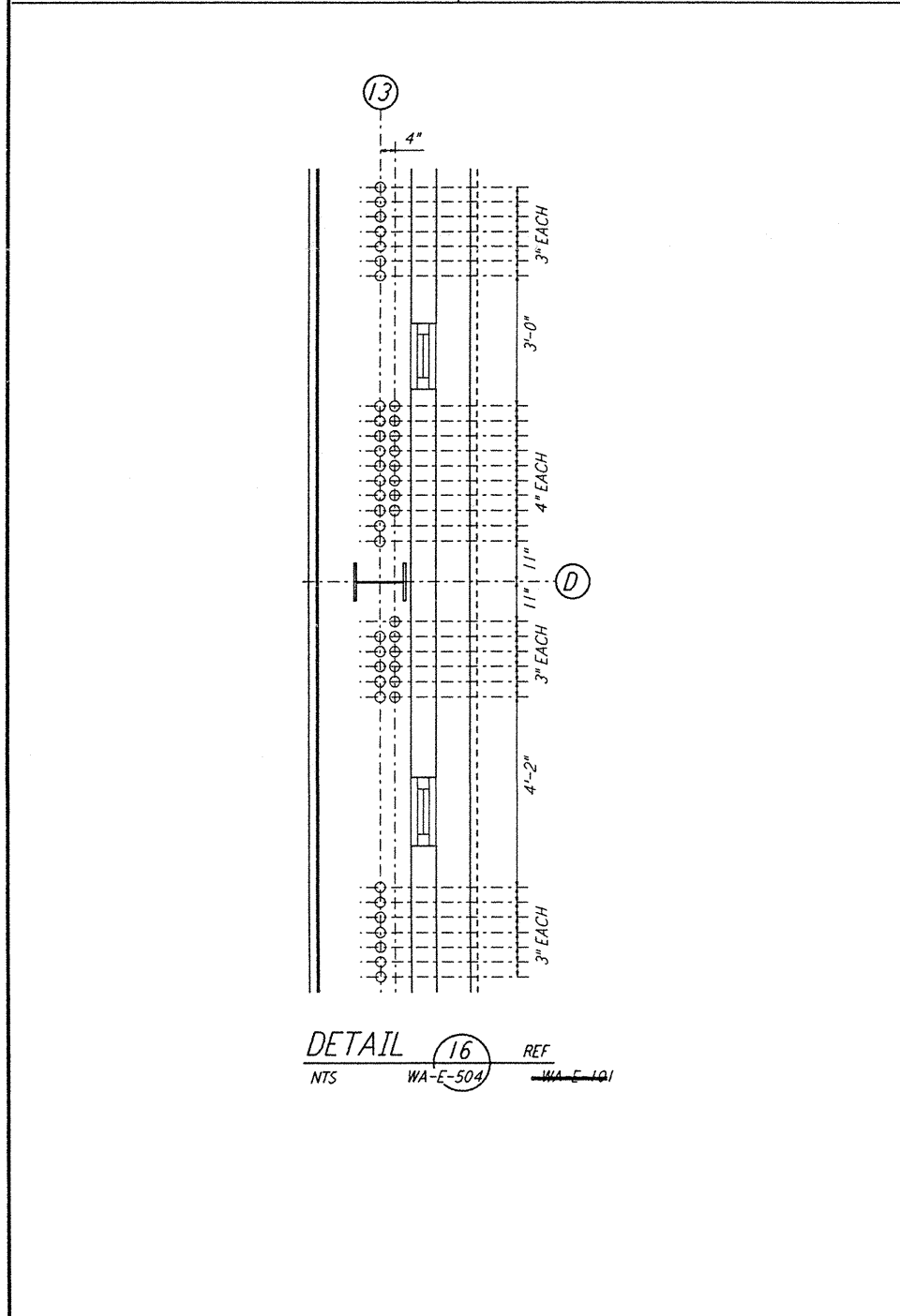
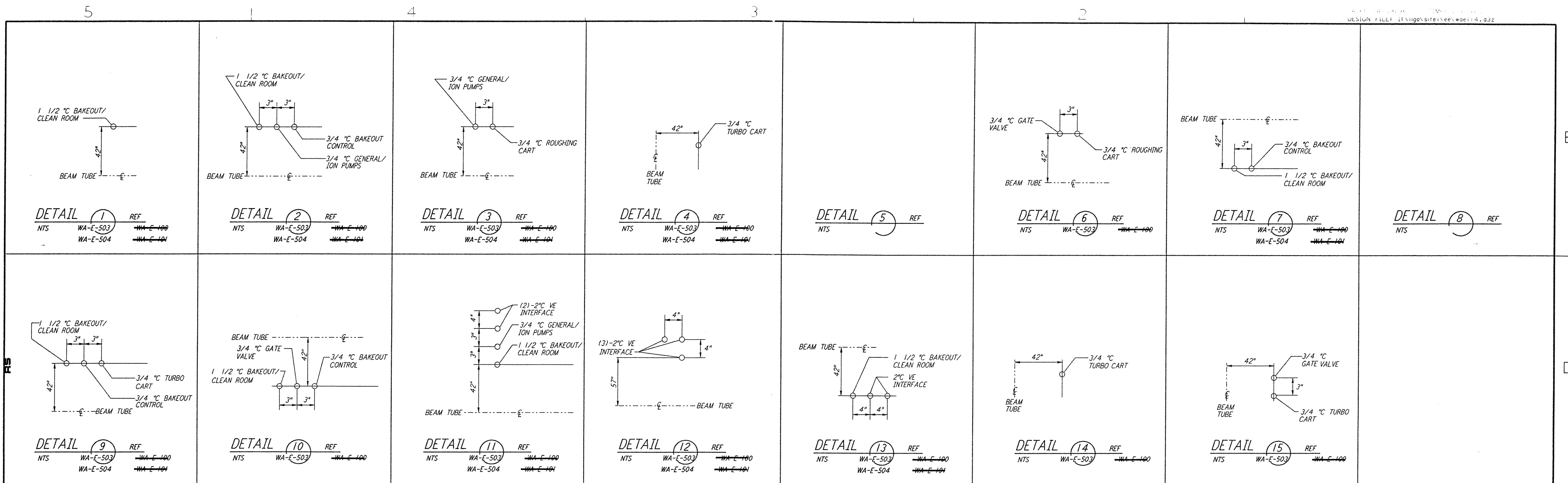
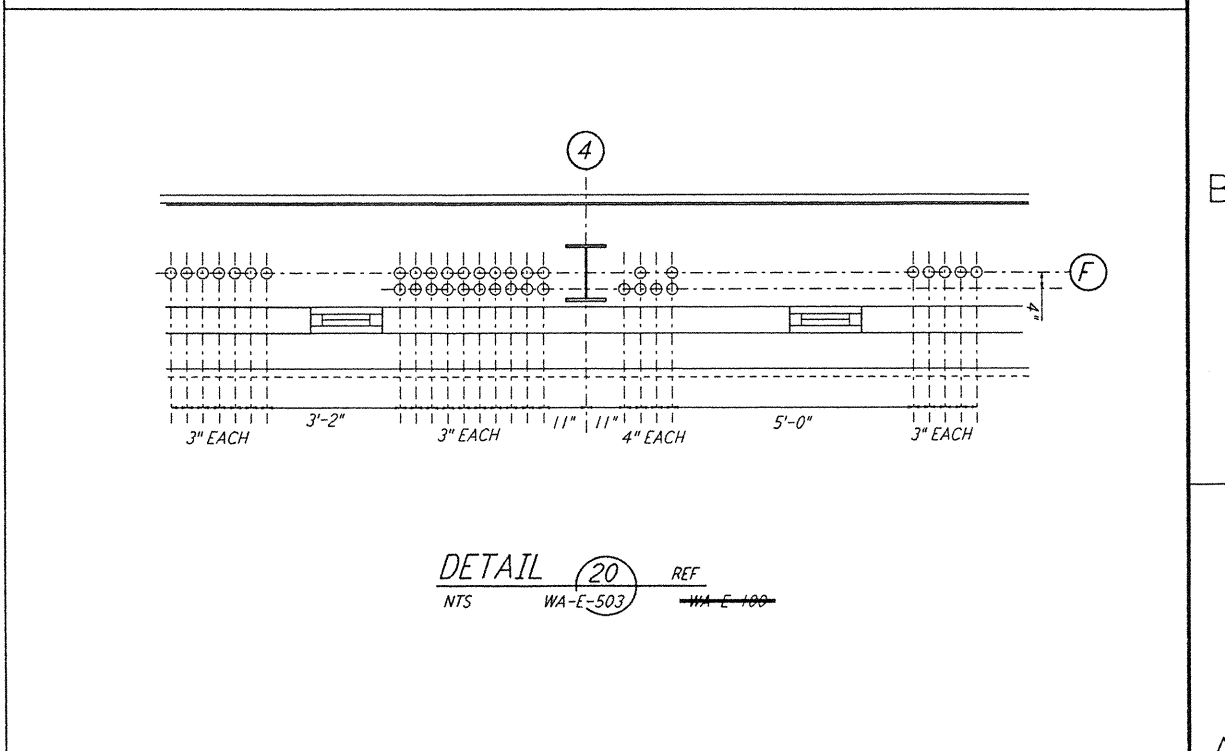
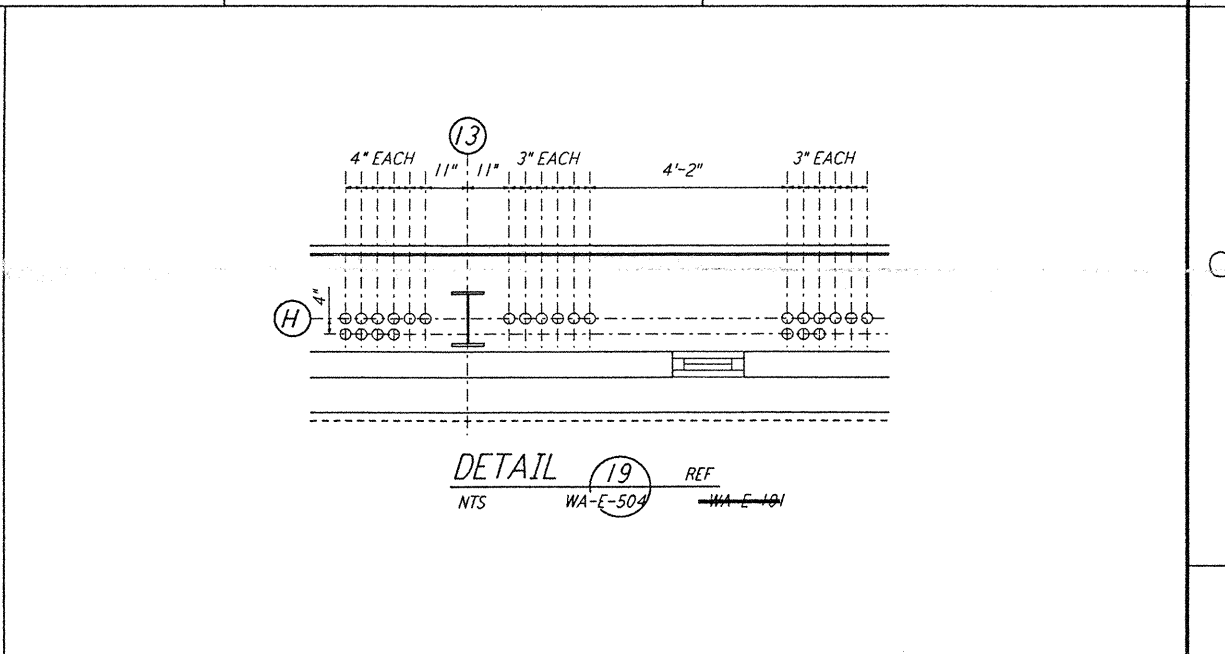
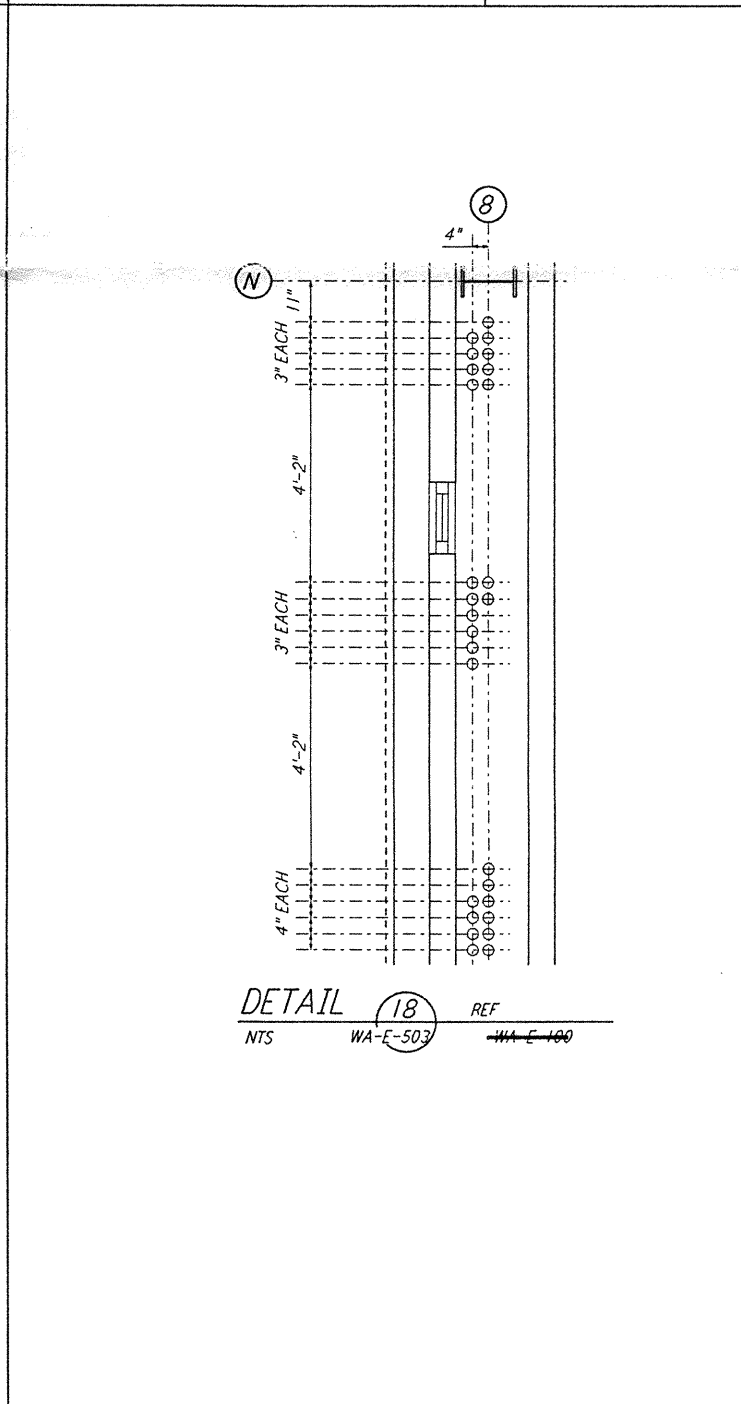


not be reproduced, copied, loaned, exhibited, or used in any other way, except by written consent from PARSONS to the borrower.

This document and the design it covers are the property of PARSONS. They are loaned only with the borrower's expressed written agreement that they will



Date Received:	LIGO-D960403-A-D
Contractor #:	WA-E-114 Rev A
TIM #:	28
Date:	4/19/96
Approved:	
TDM #:	LIGO-
Date:	/ /
Approved:	
Gen'l Transmittal:	LIGO-
Date:	/ /
Approved:	



NO.	DATE	BY	CHKD	ENGR	PROJ	DESCRIPTION
A	4-19-96	M.M.	KL	KL	KL	FINAL DESIGN REVIEW & BID

DRAWN	M.M.
CHECKED	
ENGINEER	
PROJ	



LASER INTERFEROMETER GRAVITATIONAL-WAVE OBSERVATORY SITE NO. 1 - HANFORD, WASHINGTON		
TITLE	CONTRACT NUMBER	PROJECT NUMBER
ELECTRICAL CORNER STATION LVEA AREAS 101, 102, 103, 104 DETAILS	NONE PPI50969	8094
SHEET NUMBER	WA-E-114	

LIGO-D960403-A-D

LIGOWAF3.BDR