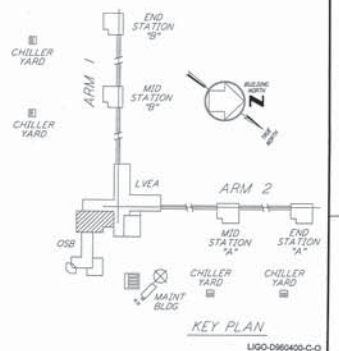
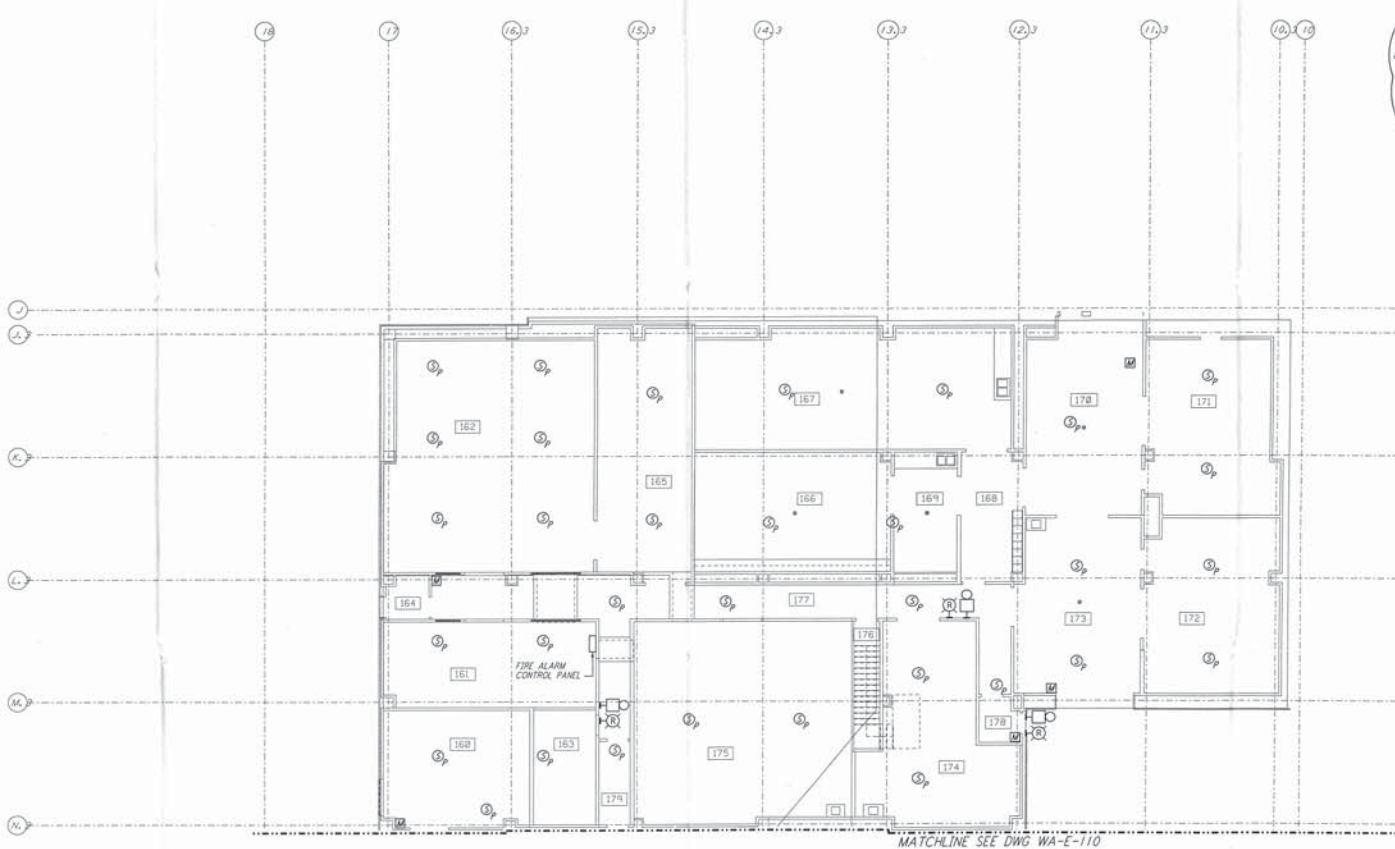


- NOTES:**
1. FOR PLAN SYMBOLS SEE DWG WA-E-002
 2. WIRING FOR FIRE DETECTION SHALL BE CLASS 'A'; FOR FIRE ALARM DEVICES SHALL BE CLASS 'B'.
 3. DUCT MOUNTED SMOKE DETECTORS SHALL BE PROVIDED WITH AN AUXILIARY RELAY CONTACT IN C.I. FOR EQUIPMENT SHUT-DOWN.
 4. COORDINATE SMOKE DETECTOR LOCATIONS WITH CLEAN AGENT DISCHARGE NOZZLES.
 5. COORDINATE AHU LOCATIONS AND DUCT MOUNTED SMOKE DETECTORS.



NO.	DATE	BY	CHKD	ENGR	PROJL	DESCRIPTION
C	5-22-96	JAC	JMY	TOM		BID ADDENDUM #2
B	4-19-96			TOM		FINAL DESIGN REVIEW & BID
A	10-31-95			TOM		PRELIMINARY DESIGN REVIEW

DRAWN	J. G.
CHECKED	
ENGINEER	
PROJL	

PARSONS
 100 WEST WALNUT STREET
 PASADENA, CALIFORNIA

LIGO
 CALIFORNIA INSTITUTE OF TECHNOLOGY
 MASSACHUSETTS INSTITUTE OF TECHNOLOGY

LASER INTERFEROMETER
 GRAVITATIONAL-WAVE OBSERVATORY
 SITE NO. 1 - HANFORD, WASHINGTON

TITLE: ELECTRICAL CORNER STATION OSB LAB AREA FIRE DET & SECURITY PLAN

AS NOTED PP150969 8094

WA-E-111

PARSONS shall not be responsible for any errors or omissions in this drawing, and shall not be liable for any damages, losses, or claims of any kind, including reasonable attorneys' fees, arising from the use of this drawing, whether or not such damages, losses, or claims are caused in whole or in part by the negligence of PARSONS. The user of this drawing agrees to hold PARSONS harmless from and against all such damages, losses, or claims.

PARSONS AND LIGO SHALL NOT BE RESPONSIBLE FOR ANY DAMAGES, LOSSES, OR CLAIMS OF ANY KIND, INCLUDING REASONABLE ATTORNEYS' FEES, ARISING FROM THE USE OF THIS DRAWING, WHETHER OR NOT SUCH DAMAGES, LOSSES, OR CLAIMS ARE CAUSED IN WHOLE OR IN PART BY THE NEGLIGENCE OF PARSONS OR LIGO.