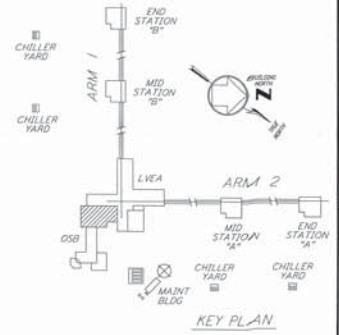
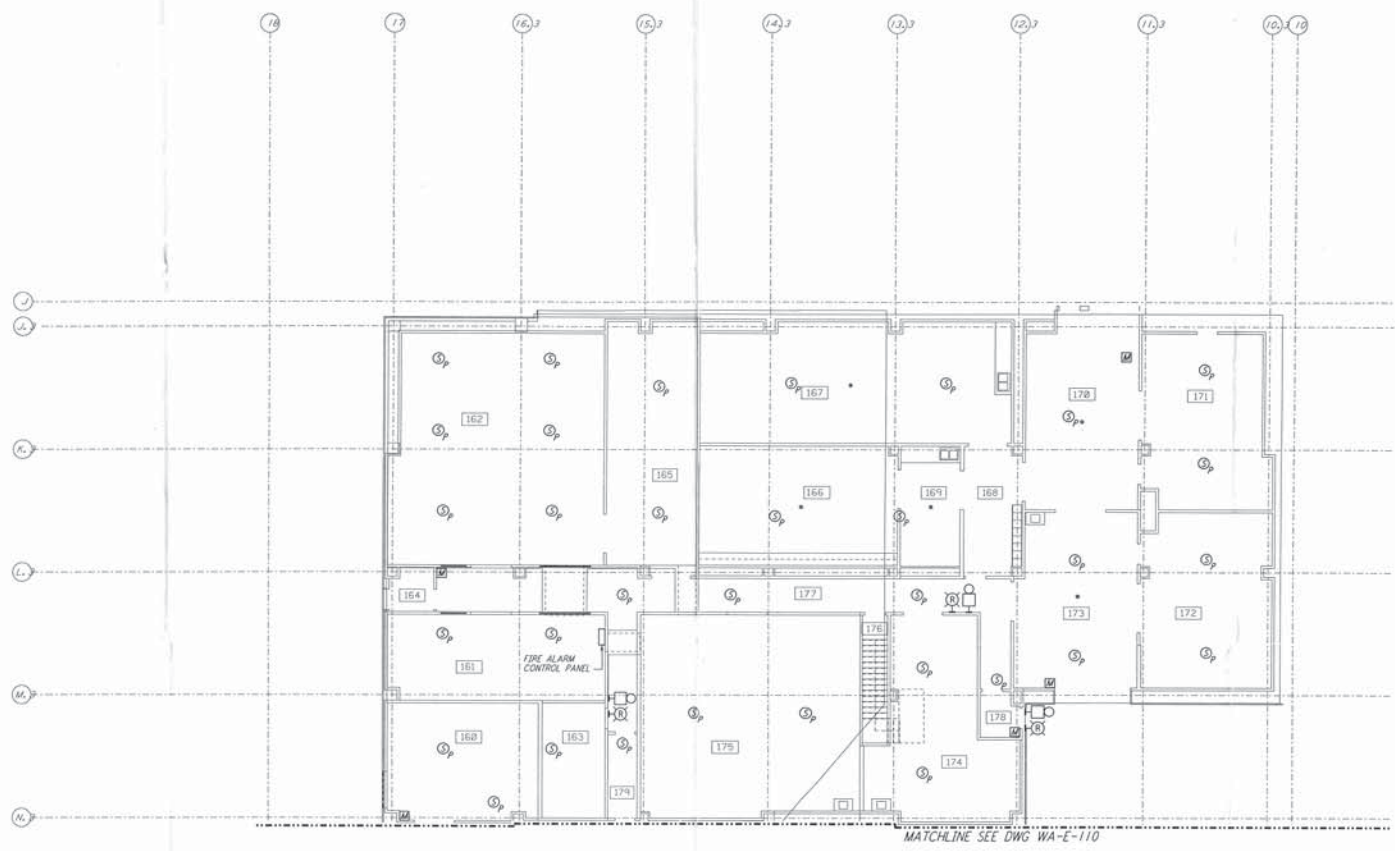


**NOTES:**

1. FOR GENERAL NOTES, AND LEGEND SEE DWG. WA-E-110.
2. COORDINATE SMOKE DETECTOR LOCATIONS WITH CLEAN AGENT DISCHARGE NOZZLES.
3. COORDINATE AMJ LOCATIONS AND DUCT MOUNTED SMOKE DETECTORS.



This document and the design it covers are the property of PARSONS. They are loaned only with the borrower's expressed written agreement that they will not be reproduced, copied, loaned, exhibited, or used in any other way, except by written consent from PARSONS to the borrower.

NO.	DATE	BY	CHKD	ENGR	PROJ	DESCRIPTION
B	4-19-96	J.C.	J.C.			FINAL DESIGN REVIEW & BID
A	10-31-95	T.M.				PRELIMINARY DESIGN REVIEW

DESIGNED	J.C.
CHECKED	
ENGINEER	
PROJ	

**PARSONS**  
 100 WEST WALNUT STREET  
 PASADENA, CALIFORNIA

**LIGO**  
 CALIFORNIA INSTITUTE OF TECHNOLOGY  
 MASSACHUSETTS INSTITUTE OF TECHNOLOGY

LASER INTERFEROMETER  
 GRAVITATIONAL-WAVE OBSERVATORY  
 SITE NO. 1 - HANFORD, WASHINGTON

**ELECTRICAL  
 CORNER STATION  
 OSB LAB AREA FIRE DET  
 & SECURITY PLAN**

AS NOTED PP150969 8094  
**WA-E-111**

LIGO-096400-B-0  
 1100WAF3.BOP