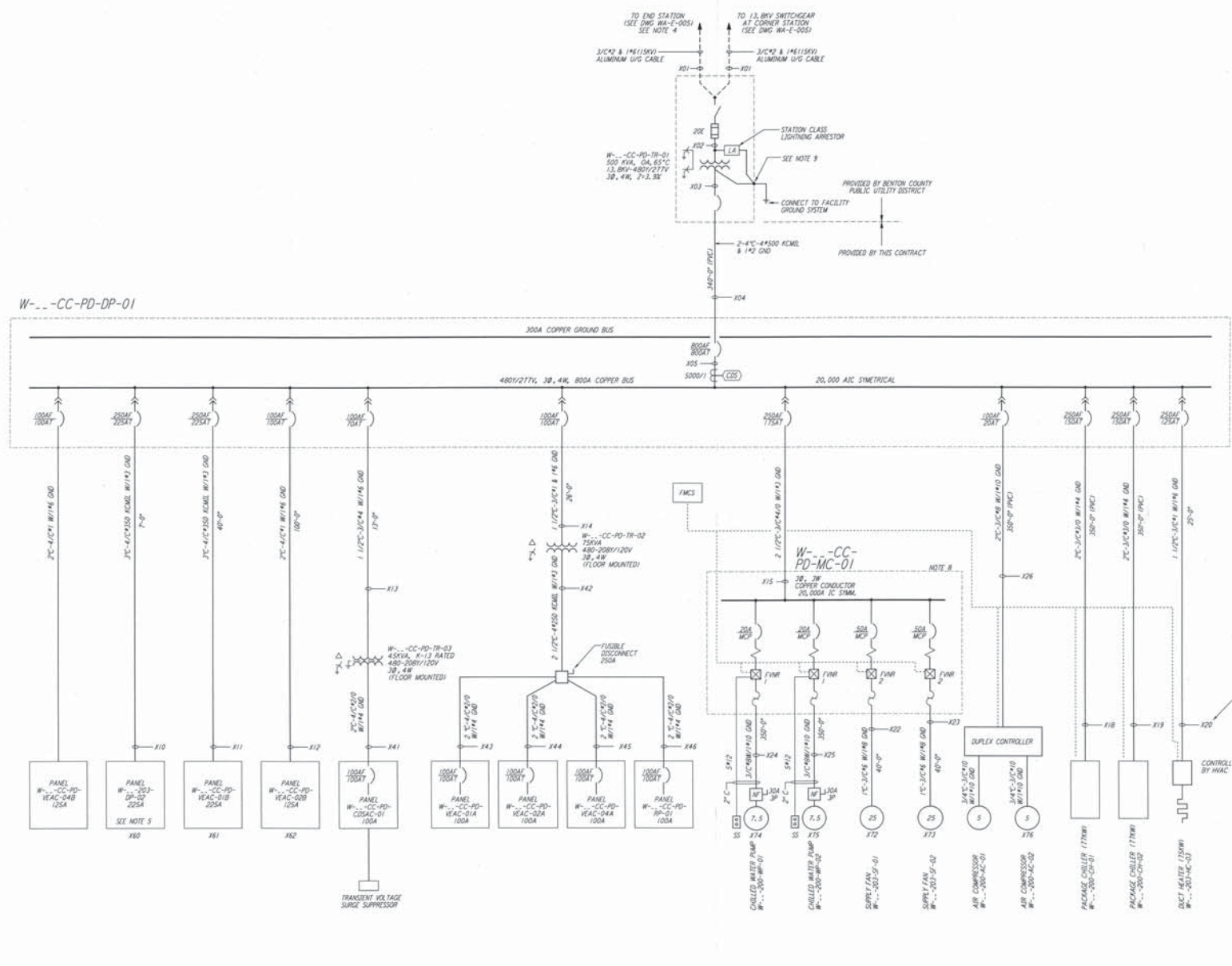


- NOTES:**
- FOR LEGEND AND GENERAL NOTES SEE DWG WA-E-005.
  - ALL CONDUCTORS ARE COPPER UNLESS OTHERWISE NOTED.
  - ALL TRANSFORMER WINDINGS ARE ALUMINUM UNLESS OTHERWISE NOTED.
  - 12.8KV CABLES ARE SHOWN FOR TYPICAL MID STATION. THE END STATION IS SIMILAR EXCEPT A SINGLE CABLE CONNECTS TO TRANSFORMER PRIMARY.
  - PANEL DP-02 SHALL BE PROVIDED WITH REMOTE CONTROLLED CIRCUIT BREAKERS FOR ALL LIGHTING CIRCUITS (9 CIRCUITS). PROVIDE 3 SPARE SINGLE-PHASE 20A REMOTE CONTROL CIRCUIT BREAKERS. REMOTE CONTROL TRANSCEIVER AND BREAKERS SHALL BE SQUARE D REMOTE CONTROL APPROVAL EQUAL TRANSCEIVER SHALL BE COMPATIBLE WITH THE FMCS IN SPECIFICATION SECTION 13000.
  - ALL CIRCUIT BREAKERS SHALL BE PROVIDED WITH LOCKING/LOCKABLE ACCESSORIES TO ENSURE THAT CIRCUITS ARE ENERGIZED BY AUTHORIZED PERSONNEL ONLY.
  - DISTRIBUTION AND LIGHTING PANELS SHALL BE FURNISHED WITH LOCKABLE DOORS. CIRCUIT BREAKERS SHALL BE PROVIDED WITH LOCKING/LOCKABLE ACCESSORIES TO ENSURE THAT CIRCUITS ARE ENERGIZED BY AUTHORIZED PERSONNEL ONLY.
  - CUTLER NAMEPLATE WESTINGHOUSE MULTI-PHASE GROUP CONTROL TYPE MOTOR CONTROL CENTER.
  - SEE DWG. WA-E-004 FOR TYPICAL TRANSFORMER GROUNDING DETAIL.



- ANALYTIC STUDY NOTES:**
- X12 REPRESENTS THE ANALYTIC NODE NUMBER, AND CORRESPONDS WITH THE ETAP VERSION 7.201 ANALYTIC STUDY.
- | NODE NUMBERING SHEET |            |   |
|----------------------|------------|---|
| BUILDING             | DESIGNATOR | X |
| MID. ARM A           | MA         | 3 |
| END. ARM A           | EA         | 4 |
| MID. ARM B           | MB         | 5 |
| END. ARM B           | EB         | 6 |
- REPLACE X WITH THE NUMBER AT RIGHT TO IDENTIFY THE SPECIFIC NODE IN A SPECIFIC BUILDING.

This document and the design it covers are the property of PARSONS. It is to be used only for the project and site identified herein. It is not to be reproduced, copied, loaned, exhibited, or used in any way without the written consent of PARSONS.

NO.	DATE	BY	CHKD	ENGR	PROJ	DESCRIPTION
1	3-21-97	J.G.	K.R.	K.R.	TOM	ISSUED FOR AS-BUILT GENERAL REVISIONS
2	6-15-98	J.G.	K.R.	K.R.	TOM	ISSUED FOR AS-BUILT GENERAL REVISIONS

ISSUED FOR CONSTRUCTION	M.M.	6-25-98
DRAWN	J.W.	7-3-98
CHECKED	K.Z.	7-3-98
ENGINEER	M.D.W.	7-8-98
PROJ		

**AS-BUILT DRAWINGS**

**PARSONS**  
 100 WEST WALNUT STREET  
 PASADENA, CALIFORNIA

**LIGO**  
 CALIFORNIA INSTITUTE OF TECHNOLOGY  
 MASSACHUSETTS INSTITUTE OF TECHNOLOGY

**LIGO-D960393-02-0**  
 LASER INTERFEROMETER  
 GRAVITATIONAL-WAVE OBSERVATORY  
 SITE NO. I - HANFORD, WASHINGTON

AS NOTED PPI50969 8094  
**WA-E-008**