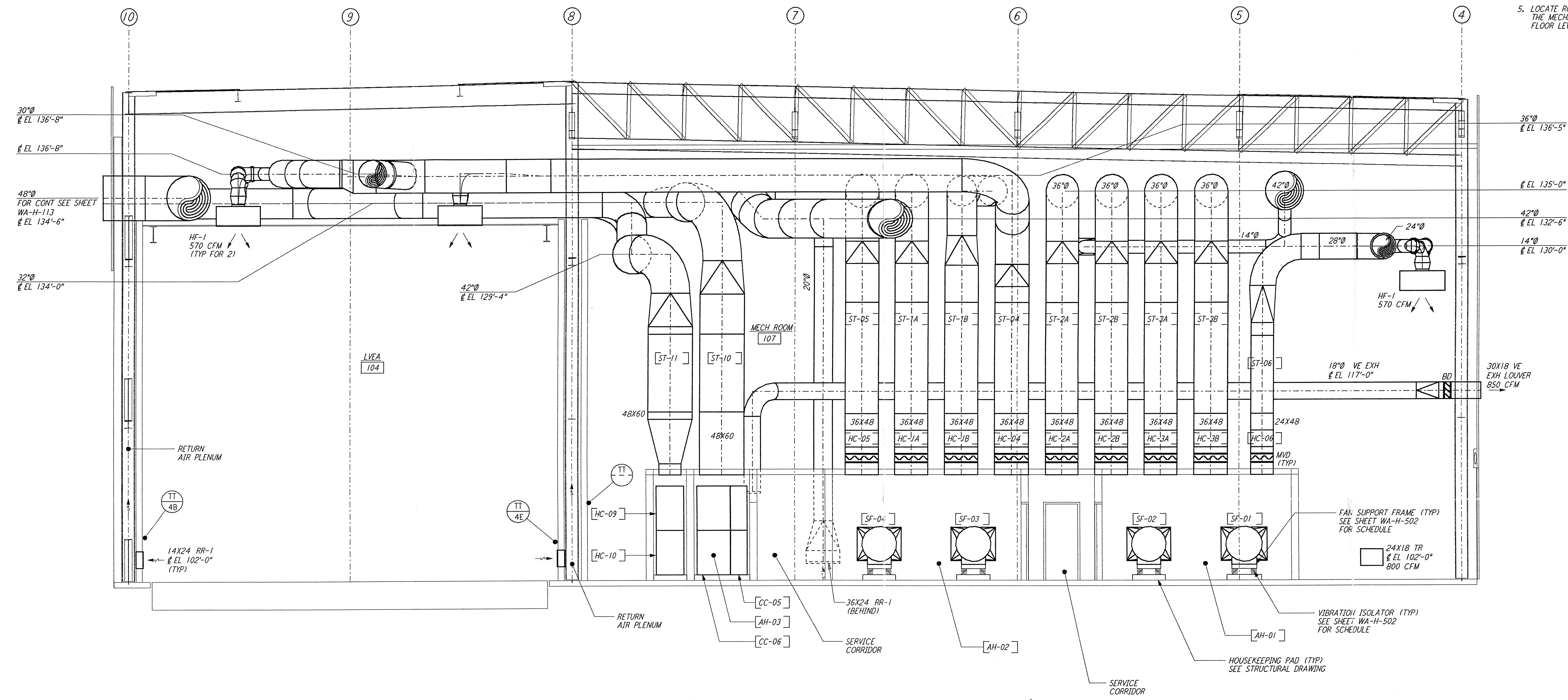


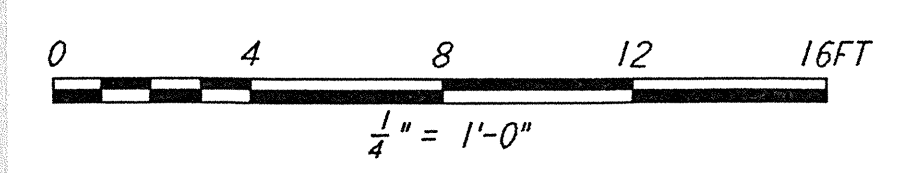
- NOTES:**
1. FOR LEGEND, ABBREVIATIONS AND GENERAL NOTES SEE SHEETS WA-H-001 AND WA-H-002.
 2. PROVIDE HIGH PRESSURE FLEX CONNECTION AT THE POINT OF CONNECTION OF DUCTS AND THE AIR HANDLING UNITS.
 3. SEE FLOOR PLAN (SHEET WA-H-531) FOR LOCATION OF COMPRESSED AIR RECEIVER AND HUMIDIFIERS ABOVE THE AIR HANDLING UNITS.
 4. SEE FLOOR PLAN NOTES FOR DUCT INSULATION.
 5. LOCATE ROOM TEMPERATURE SENSOR / TRANSMITTER FOR THE MECHANICAL ROOM AT 4'-6" ABOVE FINISHED FLOOR LEVEL.

This document and the design it covers are the property of PARSONS. They are loaned only with the borrower's expressed written agreement that they will not be reproduced, copied, loaned, exhibited, or used in any other way, except by written consent from PARSONS to the borrower.



SECTION A
 1/4" = 1'-0"
 REF: WA-H-551, WA-H-511

Date Received: 4-19-96	LIGO: D960386-A-12
Contractor: WA-H-551 Rev A	
TRM #: 28	LIGO: C 960 857-00-4
Date: 4/19/96	Approved:
TRM #:	LIGO:
Date: / /	Approved:
Gen'l Transmittal:	LIGO:
Date: / /	Approved:



NO.	DATE	BY	CHKD	ENGR	PROJ	DESCRIPTION
A	4-19-96	CLP	ME	NA		FINAL DESIGN REVIEW & BID

DRAWN	CLP
CHECKED	
ENGINEER	
PROJ	

PARSONS
 100 WEST WALNUT STREET
 PASADENA, CALIFORNIA

LIGO
 CALIFORNIA INSTITUTE OF TECHNOLOGY
 MASSACHUSETTS INSTITUTE OF TECHNOLOGY

LASER INTERFEROMETER
 GRAVITATIONAL-WAVE OBSERVATORY
 SITE NO. 1 - HANFORD, WASHINGTON

TITLE	SCALE	CONTRACT NUMBER	PROJECT NUMBER
HVAC CORNER STATION SECTIONS SHEET 1	AS NOTED	PP150969	8094
WA-H-551			