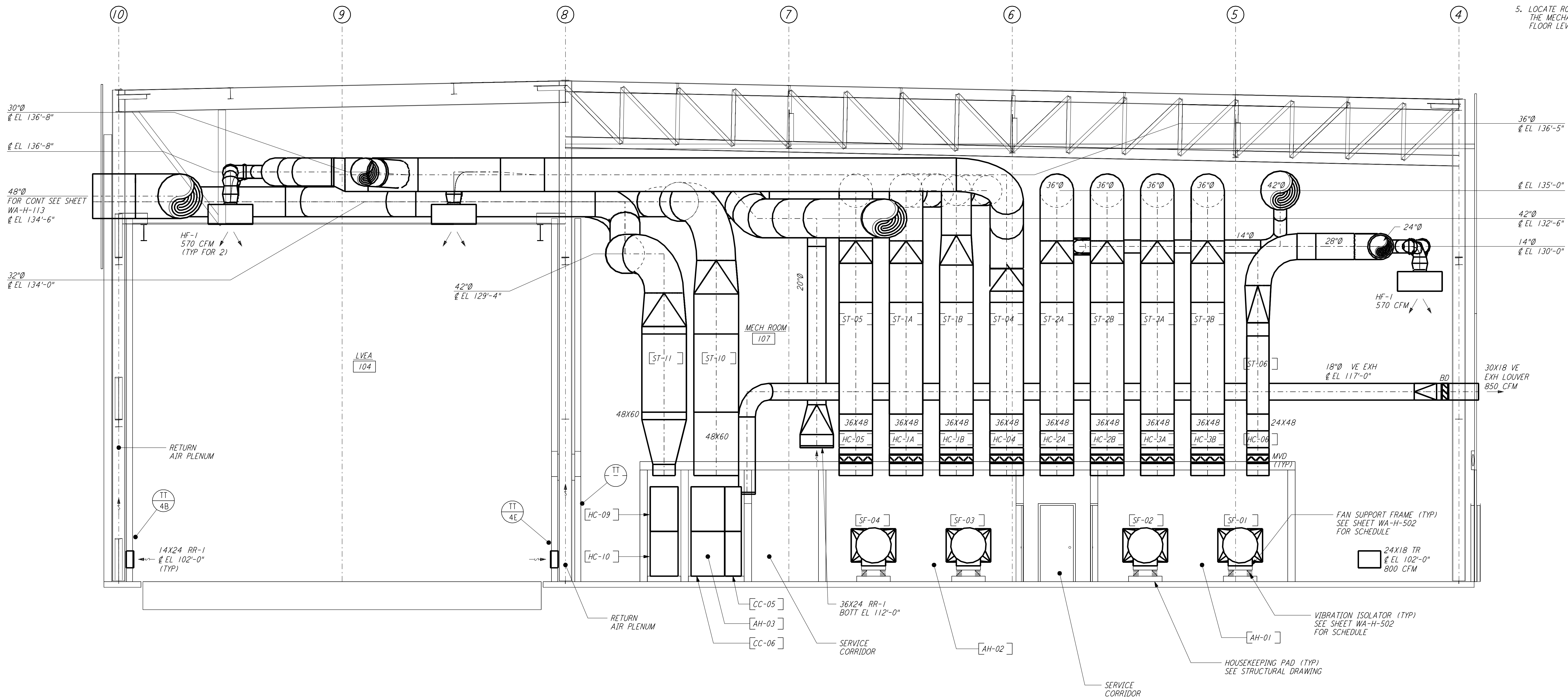
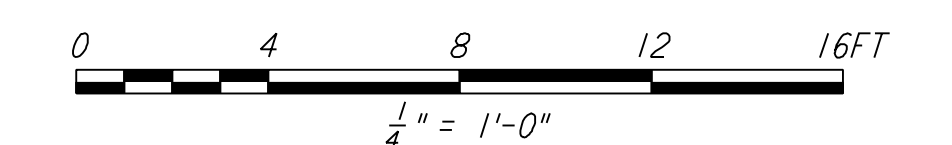


NOTES:

1. FOR LEGEND, ABBREVIATIONS AND GENERAL NOTES SEE SHEETS WA-H-001 AND WA-H-002.
2. PROVIDE HIGH PRESSURE FLEX CONNECTION AT THE POINT OF CONNECTION OF DUCTS AND THE AIR HANDLING UNITS.
3. SEE FLOOR PLAN (SHEET WA-H-513) FOR LOCATION OF COMPRESSED AIR RECEIVER AND HUMIDIFIERS ABOVE THE AIR HANDLING UNITS.
4. SEE FLOOR PLAN NOTES FOR DUCT INSULATION.
5. LOCATE ROOM TEMPERATURE SENSOR / TRANSMITTER FOR THE MECHANICAL ROOM AT 4'-6" ABOVE FINISHED FLOOR LEVEL.



SECTION A
 REF WA-H-551 WA-H-511
 1/4" = 1'-0"



LIGO-D960386-01-O

NO.	DATE	BY	CHKD	ENGR	PROJ	DESCRIPTION
1	5-15-98	CP				ISSUED FOR AS-BUILT

ISSUED FOR CONSTRUCTION
 DRAWN CLP 6-24-96
 CHECKED
 ENGINEER
 PROJ
AS-BUILT DRAWINGS

PARSONS
 100 WEST WALNUT STREET
 PASADENA, CALIFORNIA

LIGO
 CALIFORNIA INSTITUTE OF TECHNOLOGY
 MASSACHUSETTS INSTITUTE OF TECHNOLOGY

LASER INTERFEROMETER
 GRAVITATIONAL-WAVE OBSERVATORY
 SITE NO. 1 - HANFORD, WASHINGTON

SCALE	CONTRACT NUMBER	PROJECT NUMBER
AS NOTED	PP150969	8094
SHEET NUMBER		REVISIONS
WA-H-551		

HVAC
 CORNER STATION
 SECTIONS SHEET 1

This document and the design it covers are the property of PARSONS. They are loaned only with the borrower's expressed written agreement that they will not be reproduced, copied, loaned, exhibited, or used in any other way, except by written consent from PARSONS to the borrower.

Wed Sep 9 16:26:58 1998 c:\p1\at\ep1\5739.dwg I:\ligo\site1\mu\wah551.d3z