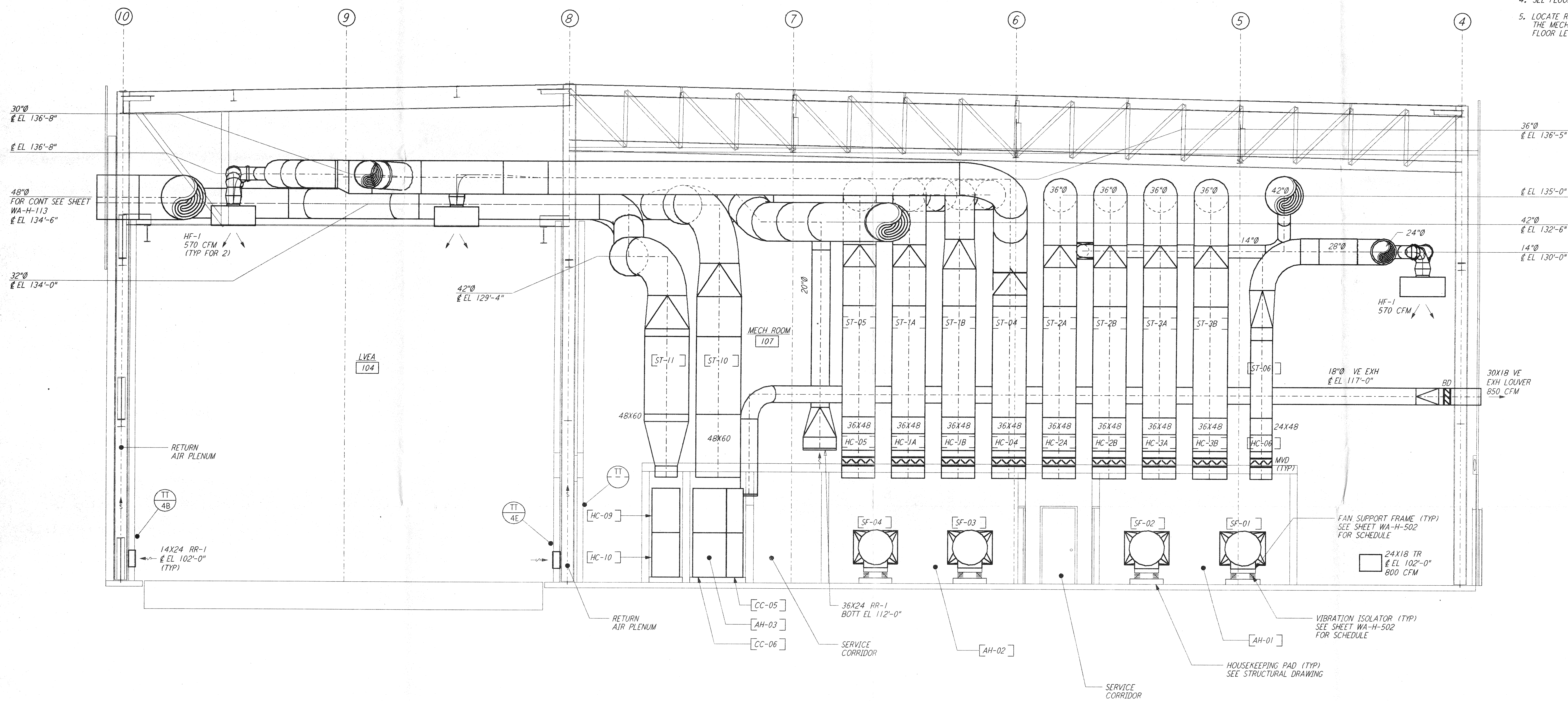


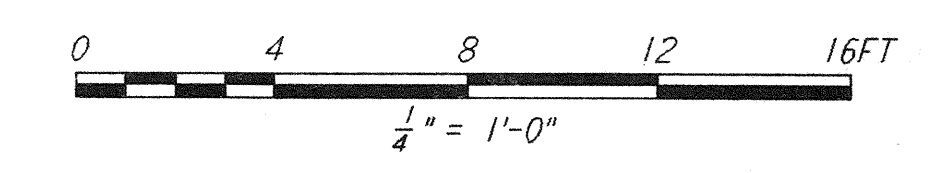
**NOTES:**

1. FOR LEGEND, ABBREVIATIONS AND GENERAL NOTES SEE SHEETS WA-H-001 AND WA-H-002.
2. PROVIDE HIGH PRESSURE FLEX CONNECTION AT THE POINT OF CONNECTION OF DUCTS AND THE AIR HANDLING UNITS.
3. SEE FLOOR PLAN (SHEET WA-H-513) FOR LOCATION OF COMPRESSED AIR RECEIVER AND HUMIDIFIERS ABOVE THE AIR HANDLING UNITS.
4. SEE FLOOR PLAN NOTES FOR DUCT INSULATION.
5. LOCATE ROOM TEMPERATURE SENSOR /TRANSMITTER FOR THE MECHANICAL ROOM AT 4'-6" ABOVE FINISHED FLOOR LEVEL.

This document and the design it covers are the property of PARSONS. They are loaned only with the borrower's expressed written agreement that they will not be reproduced, copied, loaned, exhibited, or used in any other way, except by written consent from PARSONS.

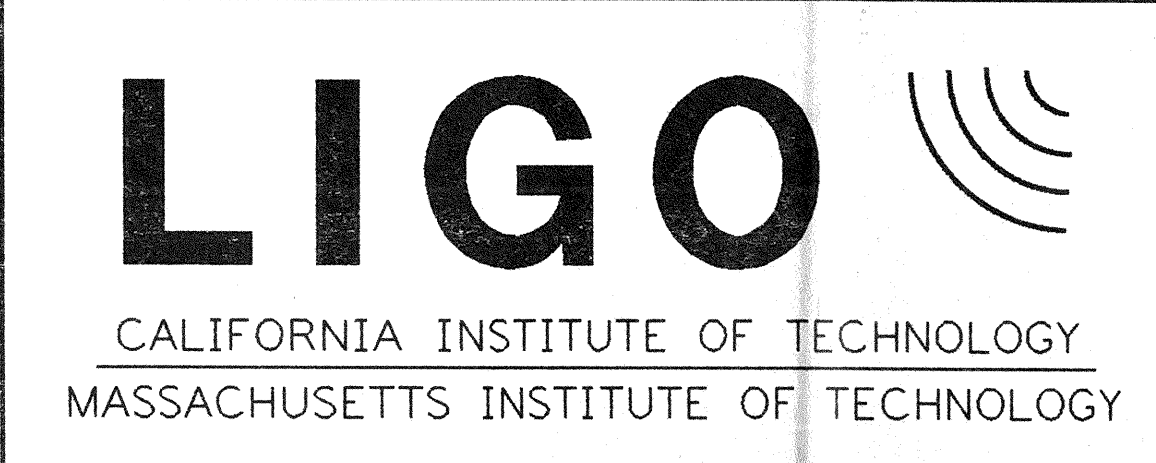
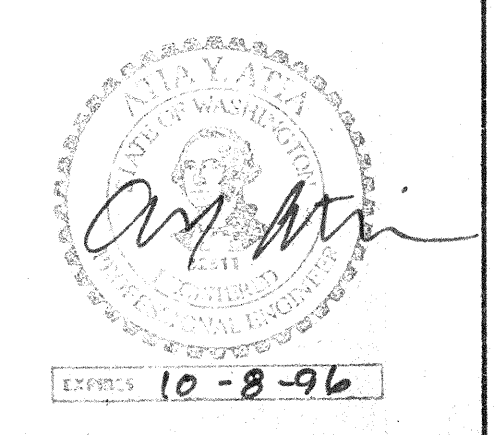


**SECTION A**  
 REF  
 WA-H-551 WA-H-511  
 1/4" = 1'-0"



NO.	DATE	BY	CHKD	ENGR	PROJ	DESCRIPTION

ISSUED FOR CONSTRUCTION	
DRAWN	CLP 6-24-96
CHECKED	MAZ 7/3/96
ENGINEER	AA 7/3/96
PROJ	TAUO 7/8/96



LASER INTERFEROMETER  
 GRAVITATIONAL-WAVE OBSERVATORY  
 SITE NO. 1 - HANFORD, WASHINGTON

SCALE	CONTRACT NUMBER	PROJECT NUMBER
AS NOTED	PP150969	8094
<b>WA-H-551</b>		

HVAC  
 CORNER STATION  
 SECTIONS SHEET 1