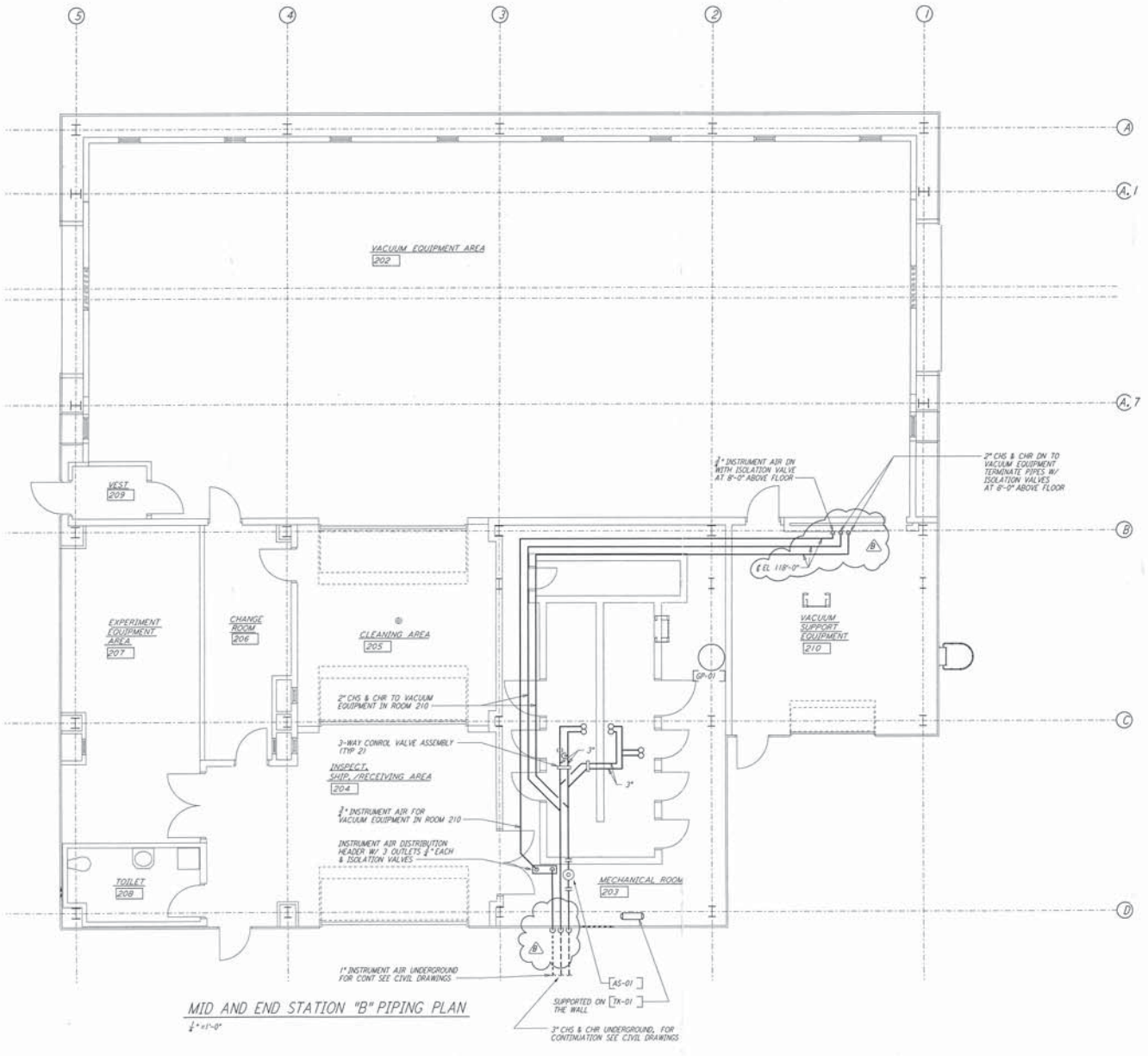
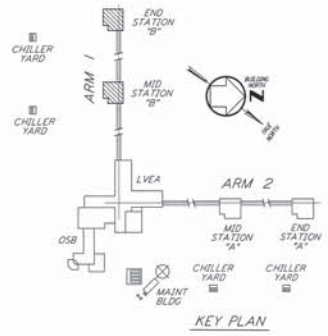




**NOTES:**  
 1. FOR LEGEND, ABBREVIATIONS AND GENERAL NOTES SEE SHEETS  
 WA-H-001 AND WA-H-002.



**MID AND END STATION "B" PIPING PLAN**  
 1/4" = 1'-0"



**KEY PLAN**  
 1/4" = 1'-0"

This document and the design it covers are the property of PARSONS. They are loaned only with the borrower's expressed written agreement that they will not be reproduced, copied, loaned, exhibited, or used in any other way, except by written consent from PARSONS to the borrower.

The document and the design it covers are the property of PARSONS. They are loaned only with the borrower's expressed written agreement that they will not be reproduced, copied, loaned, exhibited, or used in any other way, except by written consent from PARSONS to the borrower.

NO.	DATE	BY	CHKD	ENGR	PROJ	DESCRIPTION
B	5-22-98	CLP	TRP	AA	BLM	BID ADDENDUM #2
A	4-19-98	CLP	ME	AA	TDM	FINAL DESIGN REVIEW & BID

DRAWN	CLP
CHECKED	CLP
ENGINEER	
PROJ	

**PARSONS**  
 100 WEST WALNUT STREET  
 PASADENA, CALIFORNIA

**LIGO**  
 CALIFORNIA INSTITUTE OF TECHNOLOGY  
 MASSACHUSETTS INSTITUTE OF TECHNOLOGY

LASER INTERFEROMETER  
 GRAVITATIONAL-WAVE OBSERVATORY  
 SITE NO. 1 - HANFORD, WASHINGTON

HVAC  
 MID & END STATIONS "B"  
 PIPING PLAN

AS NOTED PP150969 8094  
**WA-H-216**

LIGO-D960265-B-0