

MAINTENANCE BUILDING FLOOR PLAN  
 $\frac{1}{4}'' = 1'-0''$

NOTES:

1. FOR LEGEND, ABBREVIATIONS AND GENERAL NOTES SEE SHEETS WA-H-001 AND WA-H-002.

SEQUENCE OF OPERATION:

- AIR HANDLING UNIT (AH-05):  
 UPON A SIGNAL FROM THE CENTRAL CONTROL SYSTEM THE AIR HANDLING UNIT SHALL START. THE DDC CONTROL SHALL PERFORM THE FOLLOWING:
- THE DDC CONTROLS SHALL MODULATE THE CONTROL DAMPERS ON THE OUTSIDE AIR AND THE RETURN AIR DUCTS TO MAINTAIN THE ROOM TEMPERATURE AT 72°F AND MAINTAIN 750 CFM OF OUTSIDE AIR MINIMUM.
  - WHEN THE ROOM TEMPERATURE DROPS BELOW 68°F THE DDC CONTROL SHALL ACTIVATE THE ELECTRIC DUCT HEATER TO MAINTAIN THE ROOM AT 68°F.
  - AFTER BUSINESS HOURS THE DDC CONTROLS SHALL CLOSE OFF THE OUTSIDE AIR DAMPER AND FULLY OPEN THE RETURN AIR DAMPER AND MAINTAIN THE ROOM TEMPERATURE AT 65°F.
  - IF THE ROOM TEMPERATURE DROPS BELOW 50°F, THE DDC CONTROLS SHALL REPORT AN ALARM SIGNAL TO FACILITY CONTROL AND MONITORING SYSTEM AT THE CORNER STATION.

FIRE PUMP ROOM:

- THE PACKAGED CONTROLS ON THE ELECTRIC CONVECTOR SHALL MAINTAIN THE ROOM TEMPERATURE AT 60°F.
- IF THE ROOM TEMPERATURE RISES ABOVE 104°F THE DDC CONTROLS SHALL OPEN THE GRAVITY VENTILATION DAMPERS. THE GRAVITY VENTILATION DAMPERS SHALL CLOSE WHEN THE ROOM TEMPERATURE DROPS BELOW 95°F.
- IF THE ROOM TEMPERATURE RISES TO 110°F OR DROPS BELOW 50°F, THE DDC CONTROLS SHALL REPORT AN ALARM SIGNAL TO FACILITY CONTROL AND MONITORING SYSTEM AT THE CORNER STATION.

DOMESTIC PUMP ROOM:

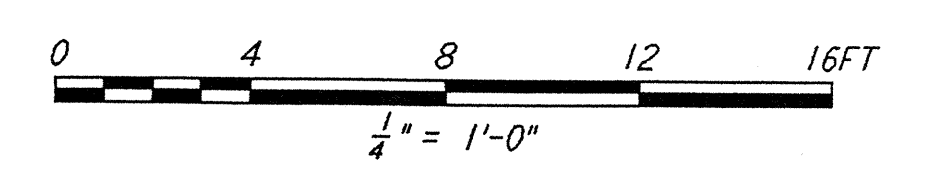
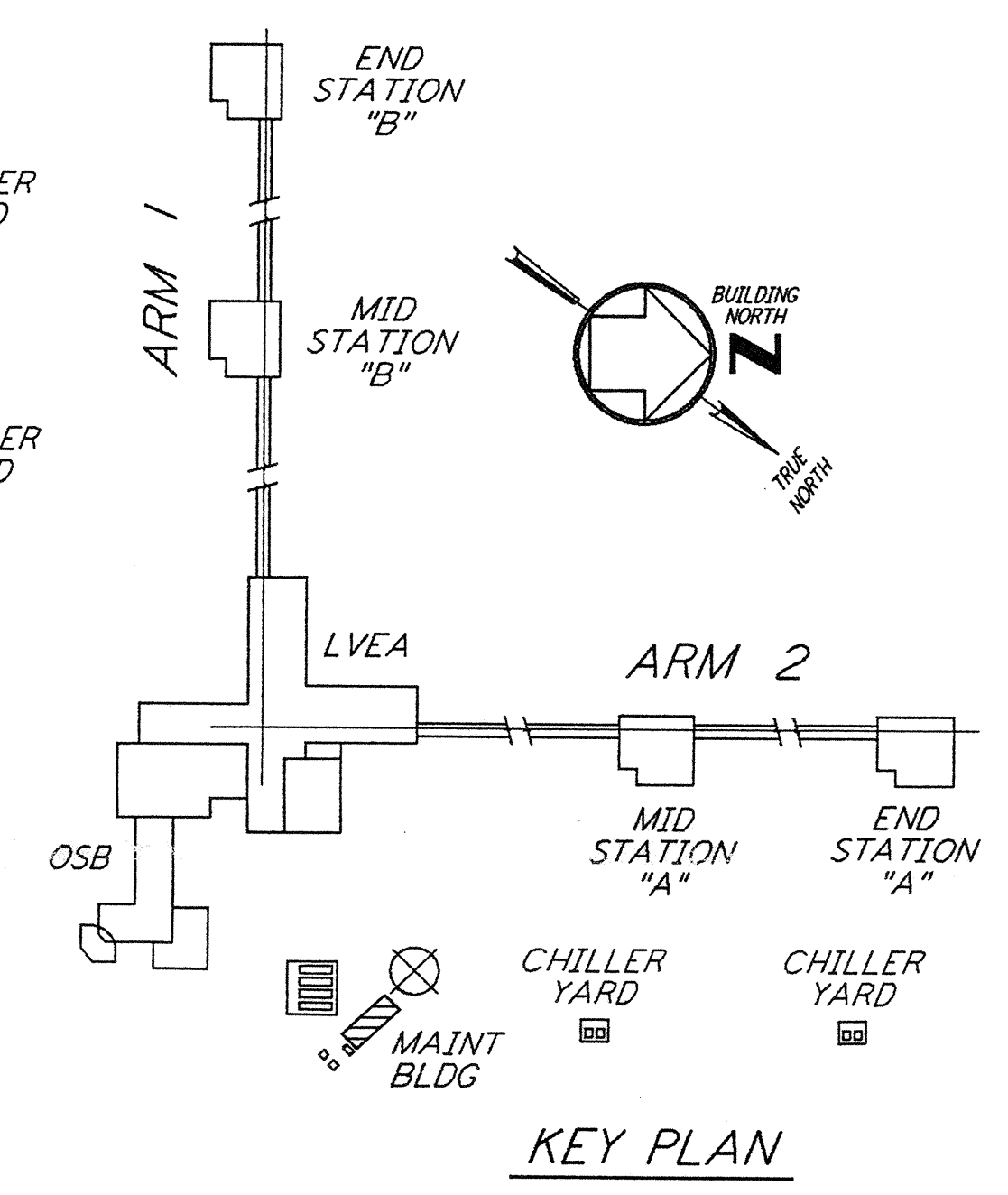
SAME AS FIRE PUMP ROOM.

ELECTRICAL ROOM:

SAME AS FIRE PUMP ROOM.

INPUT/OUTPUT SUMMARY FOR MAINTENANCE BUILDING

SYSTEM, APPARATUS, OR AREA POINT DESCRIPTION	INPUTS		OUTPUTS			SYSTEM FEATURES		GENERAL	SUPPLEMENTARY NOTES
	ANALOG		BINARY	DIGITAL	ANALOG	ALARMS	PROGRAMS		
	MEASURED	CALCULATED							
	TEMPERATURE	PRESSURE	STATUS	OFF-ON	VALVE POSITION	HI ANALOG	TIME SCHEDULING		
	RH	KV	FILTER	OFF-AUTO-ON	SET POINT ADJUSTMENT	LOW ANALOG	DEMAND LIMITING		
	AIR FLOW	LEVEL	SMOKE	OFF-HILO	NAME POSITION	HI BINARY	DUTY CYCLE		
	GALLONS	GPM	FREEZE	OPEN-CLOSE	SCR CONTROL	LOW BINARY	START/STOP OPTION		
	KWH	ENTHALPY	AIR FLOW	MULTI-STAGE		PROOF	ENTHALPY OPTION		
	RUN TIME	EFFICIENCY	METER				SMOKE CNT		
	WET BULB TEMP						TREND		
							ALARM INSTRUCT		
							MAINT WK ORD		
							COLOR GRAPHIC		
AIR HANDLING UNIT (AH-05)									PROVIDE NIGHT TIME SETBACK
HEATING COIL HC-14									
CONVECTOR HT-01									
CONVECTOR HT-02									
CONVECTOR HT-03									
CONVECTOR HT-04									
ROOM TEMPERATURE (195)									
ROOM TEMPERATURE (194)									
ROOM TEMPERATURE (196)									
ROOM TEMPERATURE (192)									
GRAVITY DAMPERS (RM 195)									
GRAVITY DAMPERS (RM 196)									
GRAVITY DAMPERS (RM 192)									
FLOOR PLAN									



not be reproduced, copied, loaned, exhibited, or used in any other way, except by written consent from PARSONS to the borrower.

This document and the design it covers are the property of PARSONS. They are loaned only with the borrower's expressed written agreement that they will

REFERENCES

NO.	DATE	BY	CHKD	ENGR	PROJ	DESCRIPTION
A	4-19-96	CLP	ME	AA		FINAL DESIGN REVIEW & BID

DRAWN	CLP
CHECKED	
ENGINEER	
PROJ	

100 WEST WALNUT STREET  
PASADENA, CALIFORNIA

CALIFORNIA INSTITUTE OF TECHNOLOGY  
MASSACHUSETTS INSTITUTE OF TECHNOLOGY

LASER INTERFEROMETER  
GRAVITATIONAL-WAVE OBSERVATORY  
SITE NO. 1 - HANFORD, WASHINGTON

TITLE: HVAC CORNER STATION MAINTENANCE BUILDING FLOOR PLAN  
 SCALE: AS NOTED  
 CONTRACT NUMBER: PPI50969  
 PROJECT NUMBER: 8094  
 SHEET NUMBER: WA-H-116  
 REVISIONS: [ ]