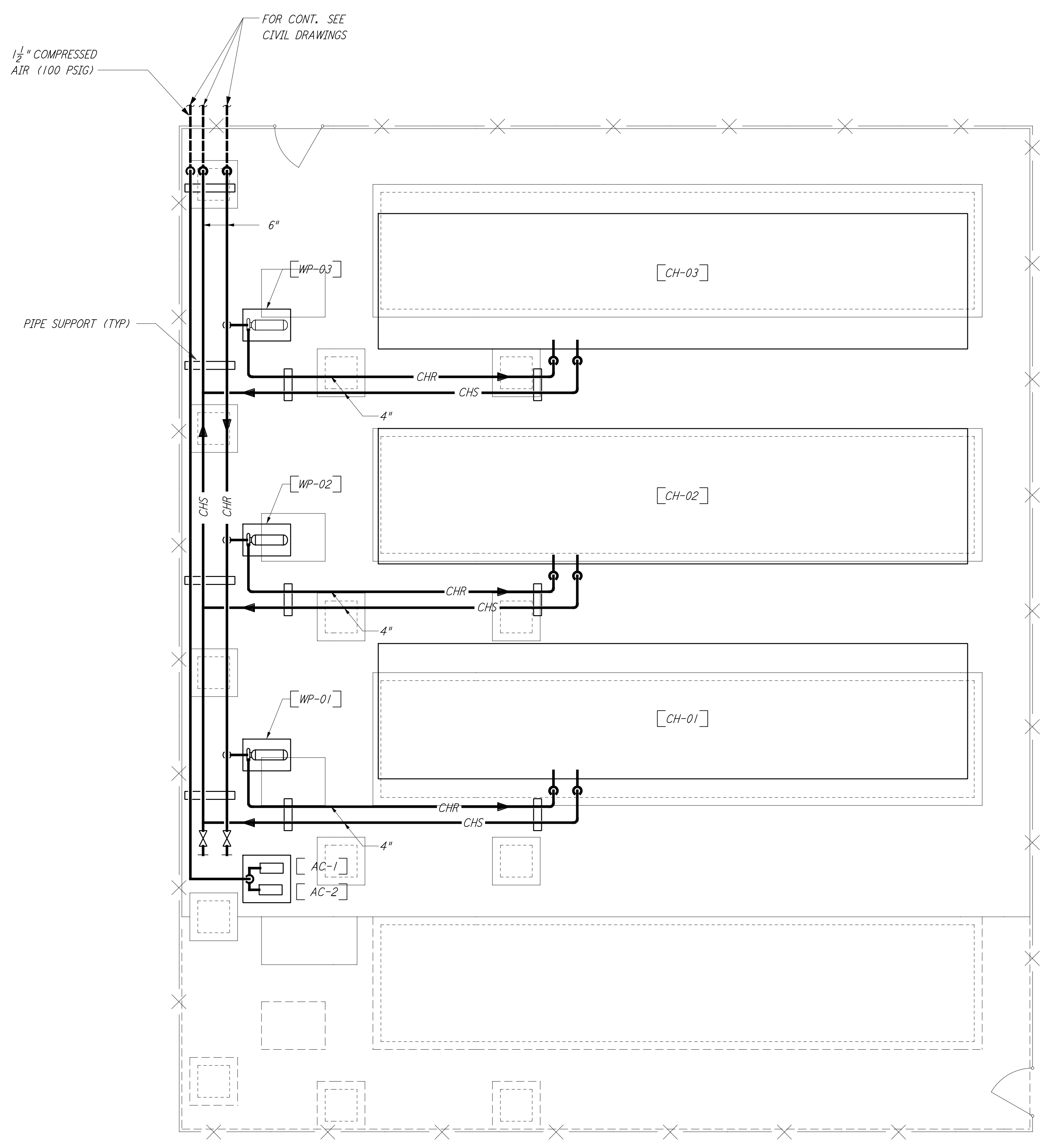
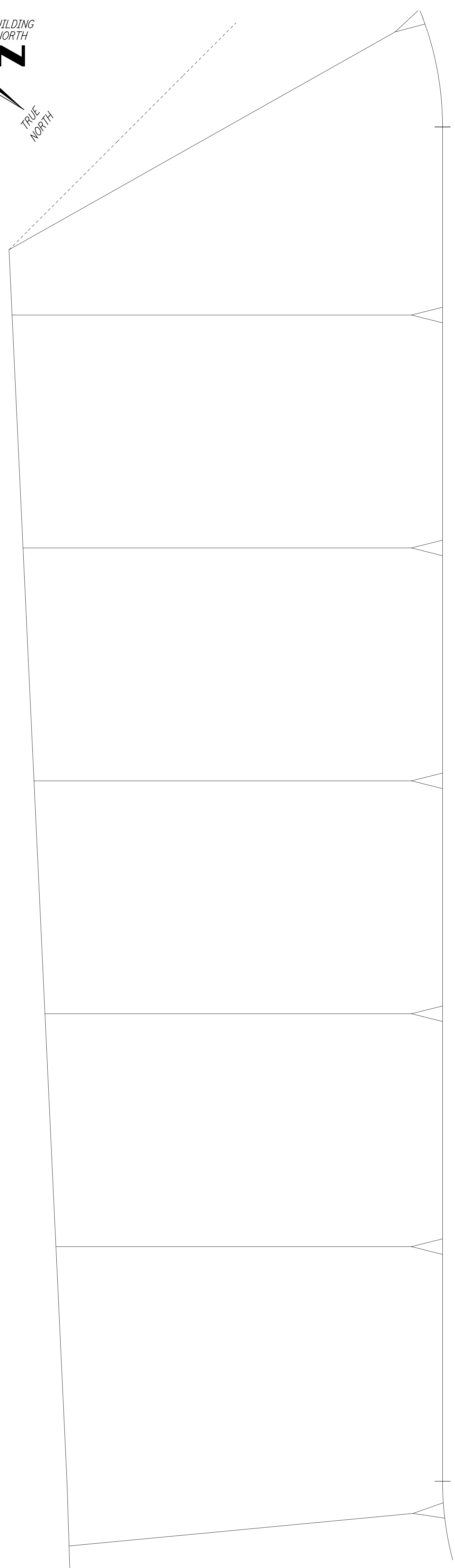
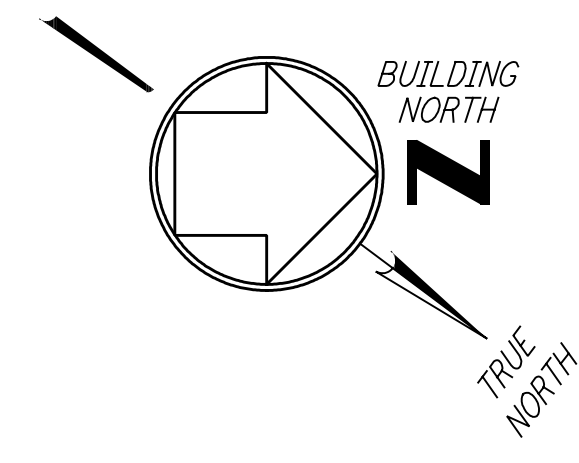
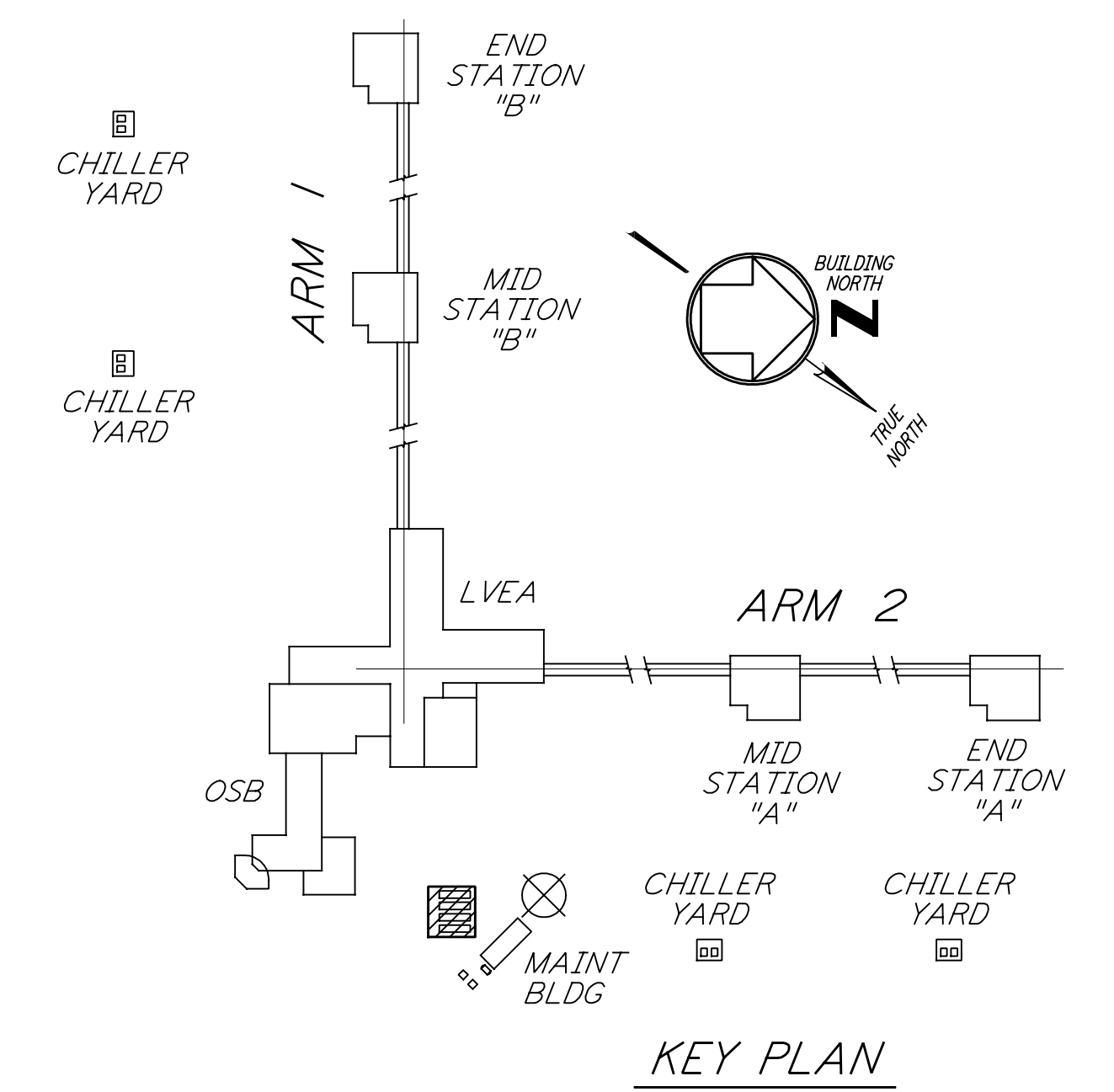


This document and the design it covers are the property of PARSONS. They are loaned only with the borrower's expressed written agreement that they will not be reproduced, copied, loaned, exhibited, or used in any other way, except by written consent from PARSONS to the borrower.



- NOTES:**
1. FOR LEGEND, ABBREVIATIONS AND GENERAL NOTES SEE SHEET WA-H-001 AND WA-H-002.
 2. MAINTAIN MINIMUM 6"-8" CLEAR HEIGHT UNDER PIPES. FOR PIPE SUPPORT DETAILS SEE STRUCTURAL DRAWING WA-S-407.
 3. PROVIDE FLOOR MOUNTED ELBOW SUPPORT AT THE PUMP SUCTION. CONTRACTOR MAY USE SUCTION DIFFUSER/STRAINER.
 4. REFER TO SPECIFICATIONS FOR PIPE SUPPORT REQUIREMENTS.
 5. SUPPORT PIPING TO ELIMINATE ANY LOADS TRANSMITTED FROM PIPING TO PUMPS AND CHILLERS.
 6. FOR PIPING FLOW DIAGRAM SEE SHEET WA-H-121.
 7. FOR VALVES AND CONTROL COMPONENTS SEE SHEET WA-H-121.
 8. PROVIDE FLEXIBLE CONNECTOR ON THE COMPRESSED AIR DISCHARGE.
 9. FOR CHILLERS AND PUMPS PIPING DETAILS SEE SHEETS WA-H-411 AND WA-H-412.
 10. FOR EXACT LOCATION OF THE CHILLERS AND PUMPS SEE CIVIL DRAWINGS.

CORNER STATION CHILLER YARD PLAN
 $\frac{1}{4}'' = 1'-0''$



0 4 8 12 16 FT
 $\frac{1}{4}'' = 1'-0''$

LIGO-D960352-01-0

NO.	DATE	BY	CHKD	ENGR	PROJ	DESCRIPTION
1	5-15-98	CP				ISSUED FOR AS-BUILT

ISSUED FOR CONSTRUCTION			
DRAWN	CLP	6-24-96	
CHECKED			
ENGINEER			
PROJ			

AS-BUILT DRAWINGS

100 WEST WALNUT STREET
 PASADENA, CALIFORNIA

CALIFORNIA INSTITUTE OF TECHNOLOGY
 MASSACHUSETTS INSTITUTE OF TECHNOLOGY

LASER INTERFEROMETER GRAVITATIONAL-WAVE OBSERVATORY SITE NO. 1 - HANFORD, WASHINGTON			
Hvac CORNER STATION CHILLERS YARD FLOOR PLAN		AS NOTED SHEET NUMBER WA-H-115	8094 PROJECT NUMBER REVISIONS