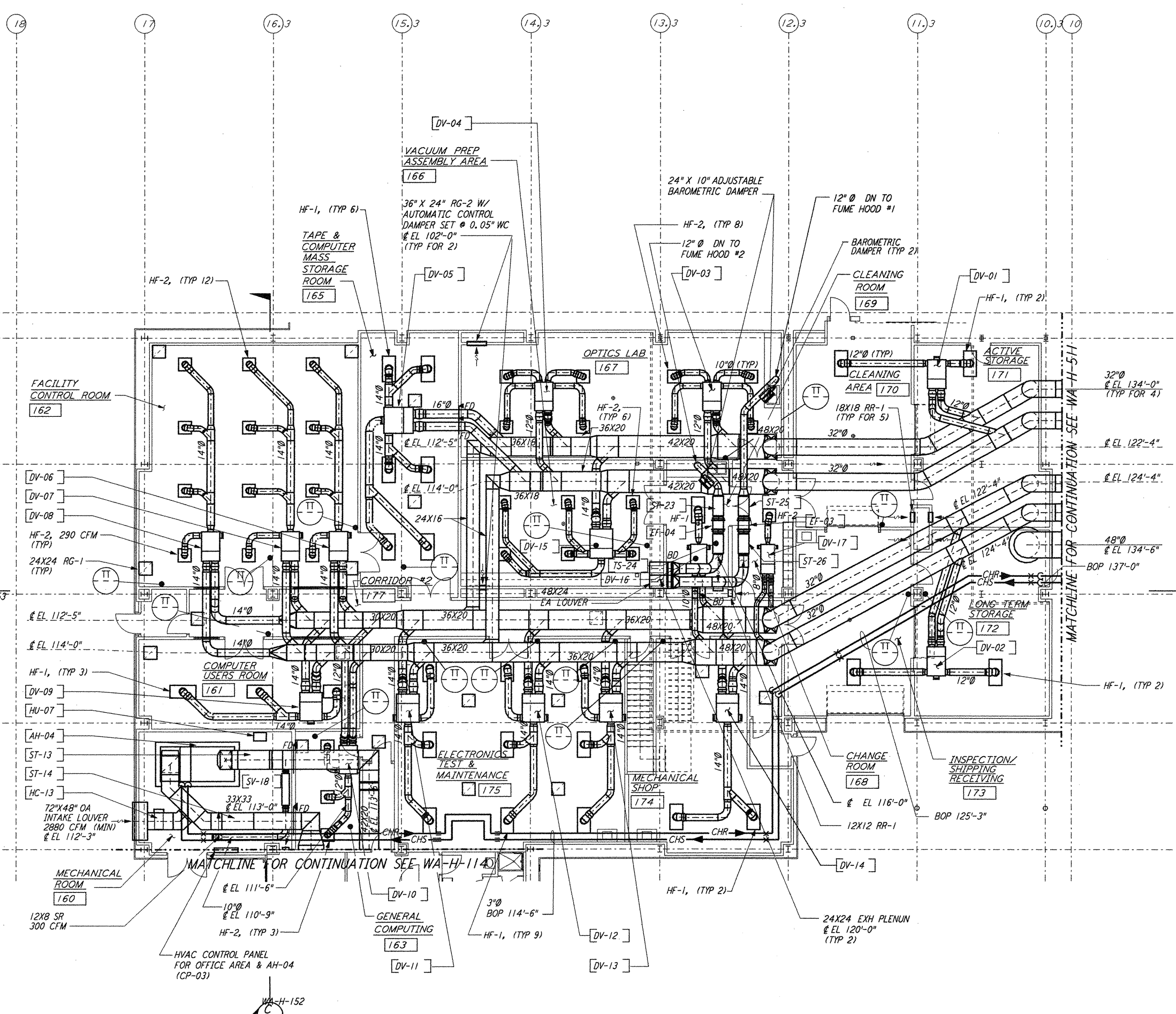


This document and the design it covers are the property of PARSONS. They are loaned only with the borrower's expressed written agreement that they will not be reproduced, copied, loaned, exhibited, or used in any other way, except by written consent from PARSONS to the borrower.



OSB FLOOR PLAN
 1/8" = 1'-0"

NOTES:

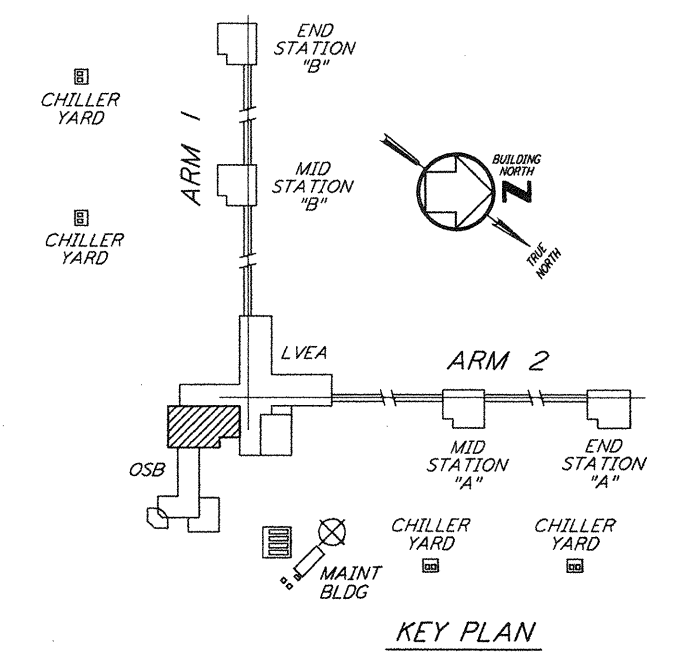
1. FOR LEGEND, ABBREVIATIONS AND GENERAL NOTES SEE SHEETS WA-H-001 AND WA-H-002.
2. ALL SUPPLY AIR DUCTS SHALL BE DOUBLE WALL WITH 1" RIGID INSULATION AND PERFORATED SHEET METAL LINER.
3. RETURN AIR DUCTS SHALL BE DOUBLE WALL WITH 2" RIGID INSULATION AND PERFORATED SHEET METAL LINER.
4. OUTSIDE AIR DUCTS AND INTAKE PLENUMS SHALL BE DOUBLE WALL WITH 2" INSULATION AND SHEET METAL JACKET.
5. FUME HOOD EXHAUST DUCTS SHALL BE SINGLE WALL 304 STAINLESS STEEL, ALL WELDED, INSULATE DISCHARGE PLENUM UP TO THE EXHAUST FAN WITH 1" FIBERGLASS INSULATION & SHEET METAL JACKET.
6. HF-1 (48"x24") SHALL BE 580 CFM EACH.
7. HF-2 (24"x24") SHALL BE 290 CFM EACH.

VAV TERMINAL NUMBER	SIZE	CFM SETTING				TEMP SETTING	
		COLD		WARM		MIN	MAX
		MIN	MAX	MIN	MAX		
W-CS-171-DV-01	08	0	1160	0	1160	65	80
W-CS-172-DV-02	08	0	1160	0	1160	65	80
W-CS-173-DV-03	08	0	1160	0	1160	72	72
W-CS-170-DV-04	08	0	1160	0	1160	72	72
W-CS-167-DV-05	10	0	3480	0	3480	72	72
W-CS-167-DV-06	08	0	1160	0	1160	72	72
W-CS-166-DV-07	08	0	1160	0	1160	72	72
W-CS-165-DV-08	08	0	1160	0	1160	72	72
W-CS-164-DV-09	09	0	1740	0	1740	72	72
W-CS-164-DV-10	07	0	870	0	870	72	72
W-CS-162-DV-11	09	0	1740	0	1740	72	72
W-CS-161-DV-12	09	0	1740	0	1740	72	72
W-CS-174-DV-13	09	0	1740	0	1740	72	72
W-CS-175-DV-14	09	0	1740	0	1740	72	72
W-CS-175-DV-15	09	0	1740	0	1740	72	72
W-CS-175-DV-16	05	0	580	0	580	72	72
W-CS-175-DV-17	03	0	290	0	290	72	72

ALL VAV TERMINAL SHALL BE CONSTANT VOLUME, FACTORY PRESET

LEGEND:

- HF-1, HEPA FILTER OUTLET, 580 CFM, 48"x24" (TYP)
- HF-2, HEPA FILTER OUTLET, 290 CFM, 24"x24" (TYP)
- ROOM TEMPERATURE SENSOR/TRANSMITTER



LIGO-D960350-02-0

**LASER INTERFEROMETER
 GRAVITATIONAL-WAVE OBSERVATORY
 SITE NO. 1 - HANFORD, WASHINGTON**

TITLE HVAC CORNER STATION OSB FLOOR PLAN SHEET 1		AS NOTED PP150969	PROJECT NUMBER 8094
SHEET NUMBER WA-H-113		REVISIONS	

PARSONS
 100 WEST WALNUT STREET
 PASADENA, CALIFORNIA

LIGO
 CALIFORNIA INSTITUTE OF TECHNOLOGY
 MASSACHUSETTS INSTITUTE OF TECHNOLOGY

ISSUED FOR CONSTRUCTION
 DRAWN CLP 6-24-98
 CHECKED ME 7/3/98
 ENGINEER AA 7/3/98
 PROJ MDCU 7/8/98

AS-BUILT DRAWINGS

NO.	DATE	BY	CHKD	ENGR	PROJ	DESCRIPTION
2	5-15-98	CP	AA	AA	TDM	ISSUED FOR AS-BUILT
1	3-20-97	WVK	AA	AA	TDM	REVISED NOTE 3

DRAWING NO.	DESCRIPTION